

# GIS Research & Map Collection

University Libraries



## *Cartographic Resources for Religious Studies in Ball State University Libraries*



- *Africa, Penetration of Islam* (map), G8201.E44 1984.U5, GRMC.
- *Archaeology of Jerusalem: First Temple, Second Temple, and Byzantine Periods*, G7504.J4:2J4 1985.P5, GRMC.
- *Atlas of American Religion: The Denominational Era, 1776-1990*, BR515.N49 2000, General Collection.
- *Atlas of Contemporary America: Portrait of a Nation—Politics, Economy, Environment, Ethnic and Religious Diversity, Health Issues, Demographic Patterns, Quality of Life, Crime, Personal Freedoms*, G1200.D6 1994, Reference Collection.
- *Atlas of Jewish History*, G1030.C559 1994, Reference Collection.
- *Atlas of Man and Religion*, G1046.E4H3 1970, Atlas Collection.
- *Atlas of Medieval Jewish History*, G1034.B413 1992, Atlas and Reference Collection.
- *Atlas of Modern Jewish History*, G1030.F6513 1990, Atlas Collection.
- *Atlas of Palestine: The West Bank and Gaza*, G2235.A85 2000, Atlas Collection.
- *Atlas of Religion*, G1046.E4O2 2007, Atlas Collection.

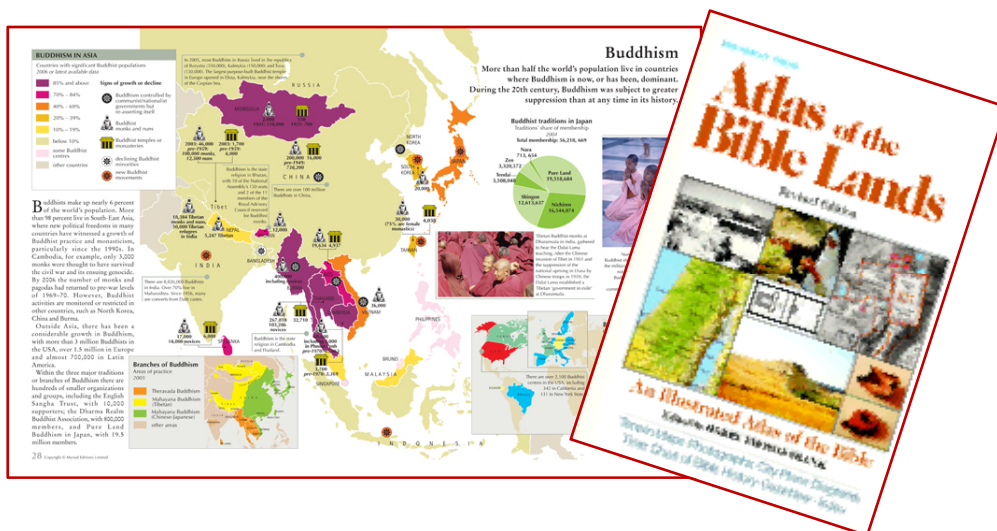
- *Atlas of Religious Change in America, 1952-1990*, G1201.E4H3 1994, Reference and Atlas Collection.
- *Atlas of the Bible*, BS630.R6 1985, General Collection, Oversize.
- *Atlas of the Bible and Christianity*, G2230.A85 1997, Atlas Collection.
- *Atlas of the Bible Lands*, G2230.H3 1977, Atlas Collection.
- *Atlas of the Christian Church*, BR98.A74 1987, General Collection, Oversize.
- *Atlas of the Early Christian World*, G1046.E4M42 1958, Atlas Collection.
- *Atlas of the Jewish World*, DS117.D4 1984, General Collection, Oversize.
- *Atlas of the World's Religions*, G1046.E4A8 1999, Atlas Collection.
- *Atlas of World Christianity: 2000 Years*, G1046.E42B7 1998, Atlas Collection.
- *Augsburg Historical Atlas of Christianity in the Middle Ages and Reformation*, G1796.E4A5 1967, Atlas Collection.
- *Bible Lands and the Cradle of Western Civilization* (map), G7480 1938 and 1946.N3, GRMC.
- *Catholic Dioceses in Indiana* (map), G4091.E423 1983.C38, GRMC.
- *Contemporary Distribution of Lebanon's Main Religious Groups* (map), G7471.E4 1988.U5, GRMC.
- *Cultural Activity, Religious Congregations, 1775-1776: After Paullin and Wright* (map), G3709.31.E4 1776.C6, GRMC.
- *Cultural Atlas of Africa*, G2446.E1C8 1998, Reference and General Collection.
- *Cultural Atlas of India: India, Pakistan, Nepal, Bhutan, Bangladesh, and Sri Lanka*, DS421.J6 1996, Atlas Collection.
- *Cultural Map of the Middle East*, G7421.E1 1972.N3, GRMC.
- *Diocese of Lafayette, Indiana: Comprising 24 Counties of North Central Indiana* (map), G4091.E423 1983.D5, GRMC.
- *Distribution of Religions: Arab Countries* (map), G5681.E4 1989.U5, GRMC.

- *Europe: Keeping the Faith* (map), G5700 2005.N36, GRMC.
- *Harper Atlas of the Bible*, G2230.H47 1987, Reference Collection.
- *Harper Collins Concise Atlas of the Bible*, G2230.H37 1997, Reference Collection.
- *Heart of the Middle East* (map), G7421.C2 2002.N3, GRMC.
- *Historical Atlas of Afghanistan*, G2266.S1R6 2003, Atlas Collection.
- *Historical Atlas of Islam*, G1786.S1H6 2002, Atlas Collection.
- *Historical Atlas of Religion in America*, G1201.E4G3 1976, Reference and Atlas Collection.
- *Historical Atlas of Religions*, BL80.3.F37 2002, General Collection.
- *Historical Atlas of the Muslim Peoples*, G1786.S1R6 1957B, Reference Collection.
- *Historical Atlas of the Religions of the World*, BL80.2.H57 1974, General Collection.
- *Historical Maps on File*, G1033.M265 1984, GRMC.
- *Holy Land* (map), G7480 1976.N28, GRMC.
- *Holy Land Today* (map) G7480 1964.N3, GRMC.
- *Holy Land: Special Places of the World* (map), G7480 1989.N3, GRMC.
- *Illustrated Atlas of Jewish Civilization: 4,000 Years of Jewish History*, G1030.G48 1990, Atlas Collection.
- *Illustrated Atlas of World History*, G1030.A33 1992, Atlas Collection.
- *India's Religions* (map), G7651.E4 1996.U5, GRMC.
- *Iran Country Profile* (map), G7620 2004.U55, GRMC.
- *Iraq Country Profile*, G7611.A43 2003.U512, GRMC.



- *Irish History Atlas*, G1831.S1E3 1981, Atlas Collection.
- *Islam in Africa* (map), G8201.E44 1987.U5, GRMC.
- *Israel: Map of the Holy Land for the Christian Pilgrim*, G7501.E43 1962.K3, GRMC.
- *Israel: Map of the Holy Land*, G7501.E43 1962.K35, GRMC.
- *Israeli Developed Areas in Jerusalem* (map), G7504.J4F3 1985.U5, GRMC.
- *Italy: Ecclesiastical Provinces of the Roman Catholic Church* (map), G6711.E423.zx, GRMC.
- *Jerusalem, the Old City* (map), G7504.J4:2Y4 1970.I8, GRMC.
- *Jerusalem, the Old City and Bethlehem* (map), G7504.J4E635 1997.M3, GRMC.
- *Jerusalem's Holy Places in the Old City* (map), G7504.J4E4 1978.M3, GRMC.
- *Jewish History Atlas*, G1030.G5 1977, Reference Collection.
- *Lands of the Bible Today with Descriptive Notes* (map), G7480 1976.N3, GRMC.
- *Lebanon, Population and Religious Affiliation* (map), G7471.E4 1985.U5, GRMC.
- *Listen to Israel, Thrice Blessed Land* (map), G7481.S1 1996.G3, GRMC.
- *Macmillan Atlas History of Christianity*, G1046.E4L5 1976, Reference Collection.
- *Macmillan Bible Atlas*, G2230.A2 1993, Reference Collection.
- *Major Ethnic Groups in Predominantly Muslim Areas* (map), G5681.E1 1989.U5, GRMC.
- *Major Muslim Ethnic Groups in Armenia, Iran, and the Islamic Commonwealth States* (map), PREX 3.10/4:M 97/5, GRMC.
- *Map of Amish Farmland, Lancaster County, Pennsylvania*, G3822.A55E635 1976.T5, GRMC.
- *Map of Bethlehem*, G7514.B4 1981.K3, GRMC.
- *Map of the World's Religions and Missions*, G3201.E424 1966.S3, GRMC.
- *Millennium in Maps: Cultures* (map), G3201.E3 1999.N3, GRMC.

- *Moody Atlas of the Bible*, G1831.S1E3 1981, Atlas Collection.
- *Muslim Distribution: World* (map), G5671.E44 1984.U5, GRMC.
- *Muslim Distribution: Islamic Countries* (map), G5680 1995.U5, GRMC.
- *Muslim Peoples in the Soviet Union* (map), G7001.E1 1981.U5, GRMC.
- *Muslim World* (map), G3201.E44 1980.G4, GRMC.
- *New Atlas of the Bible*, BS621.N4413 1969B, General Collection.
- *New Israel Atlas: Bible to Present Day*, G2235.V52 1969, Atlas Collection.
- *Oxford Bible Atlas*, BS630.O96 2007, Reference Collection.
- *Palestine Plan of Partition with Economic Union, 1947* (map), G7501.F7 1947.U5, GRMC.
- *RE Atlas: World Religions in Maps and Notes*, G1046.E4T56 1986, Atlas Collection.
- *Routledge Atlas of Jewish History*, G1030.G52 2006, Atlas Collection.
- *Routledge Historical Atlas of Religion in America*, G1201.E4C3 2000, Reference Collection.
- *Southern Baptist Missions Around the World* (map), G3201.E424 1980.zx, GRMC.
- *Soviet Union, Muslim Population* (map), G7001.E44 1979.U5, GRMC.
- *State of the World Atlas: The Unique Visual Survey of Political, Economic, and Social Trends*, G1021.K46 1999, Atlas Collection.



- *State of the World on Monday, January 1<sup>st</sup>, 1000 A.D.* (map), G3201.S2 2000.H2, GRMC.
- *Times Atlas of European History*, G1797.21.S1T5 1994, Atlas Collection.
- *Twentieth Century Atlas of the Christian World*, BV2100.F713, General Collection.
- *Vatican City* (map), G6714.R7:3V3 1984.U5, GRMC.
- *Wales Christian Heritage* (map), G5761.E42 1983.zx, GRMC.
- *Westminster Historical Atlas to the Bible*, BS630.W7 1956, General and Atlas Collection.
- *World Heritage* (map), G3201.E1 2001.M2, GRMC.
- *World Terrorism: A Reference Map*, G3201.E625 2002.M37, Atlas Collection.

