



[Annual Report](#)

[Alumni Staff](#)

[Alumni
Leadership](#)

[Alumni
Ambassadors](#)

[Alumni
Contacts](#)

[Alumni
Awards](#)

[Professional
and
Constituent
Societies](#)

[Reunions](#)

[Alumni
Programs](#)

[Past
Activities
Calendar](#)

[Financial
Summary](#)



Building a Legacy

Ball State's Alumni Association was founded when the first class of the fledgling "Indiana State Normal School" graduated in 1919. The Association was formed to meet the needs of alumni socially and educationally, and to encourage loyalty to Ball State. This group functioned until a more formal organization was established in 1926. The Association evolved from its informal beginning to a dues-paying organization in 1939, to its current structure, which since 1954 has effectively incorporated an annual alumni fund, replacing the dues-paying system.

The Alumni Association currently provides services, programs, and communications to the university's more than 120,000 living alumni. Over the years, the depth and scope of these services, programs, and communications have increased to stay abreast of the demands of the alumni body that is constantly increasing in size and expectations.

Mission

The Ball State University Alumni Association, an interdependent organization of the university, exists to foster and fully realize the ideals and mission of the university. The Alumni Association encourages loyalty, participation, and support of the university by informing alumni of the achievements and needs of their Alma Mater. The Alumni Association advances the university throughout the world and unites all alumni in closer bonds of education, fellowship, tradition, and mutual assistance.

Thank you for your continued interest and investment in Ball State University and the Alumni Association!



Alumni Center

Ball State University Alumni Association
Muncie, IN 47306-0075
Telephone: 765-285-1080
Toll Free: 1-888-I-GO-4-BSU
E-mail: alumni1@bsu.edu.

Copyright © 2002 [Ball State University]. All rights reserved.
Revised: 08 Jul 2003 10:32:06 -0500 .

Comments to the [Webmaster](#).





BSUAA 2000-2001 ANNUAL report Alumni Association staff

[Annual Report](#)

[Alumni Staff](#)

[Alumni Leadership](#)

[Alumni Ambassadors](#)

[Alumni Contacts](#)

[Alumni Awards](#)

[Professional and Constituent Societies](#)

[Reunions](#)

[Alumni Programs](#)

[Past Activities Calendar](#)

[Financial Summary](#)

Ed Shipley, '68MA71, Executive Director



Tracy Curry, '89MA98, Assistant Director, Marketing



Andrea Deer, '95, Assistant Director, Special Events

Laura Hale, '98MPA00, Program Coordinator

Susan Holloway, Alumna Assistant

Ernie Krug, '68MAE73MAE82, Director, Alumni Activities

Erin Lambert, Executive/Financial Assistant

Russ Lawrence, '94, Assistant Director, Outreach

Debbie Linegar, '92, Associate Director

Charlotte Shepperd, '68MA75, Director, Alumni Communications

Maggie Study, MA70, Alumna Assistant

Sue Taylor, '71, Assistant Director, Constituent Relations

Kate Webber, '98MA99, Information Coordinator

Diane Williams, Communications Assistant

Michelle Vore, '93, Assistant Director, Technology

Todd Berk, MS01, Communications Graduate Assistant

Rob Higley, MBA01, Communications Graduate Assistant

Tiffany Day, Communications Undergraduate Assistant

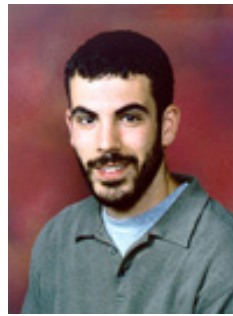
Lisa Fosnaugh, Communications Undergraduate Assistant

Sarah Nelson, BSUAA Undergraduate Assistant

Jackie Shubert, '01, Communications Undergraduate Assistant



David Westbrook, Communications
Undergraduate Assistant



A special thanks to those staff members not pictured who contributed to the Alumni Association's success in 2000-01. Lori M. Mallory, '96MA99, Program Assistant; Subbu Paravatareddy, MS00, Information Technology Graduate Assistant; Becky Earlywine, '99, BSUAA Assistant; Kaebra Bent, Kelli Hahn, '01 and Nicole Witzke, BSUAA Undergraduate Assistants; Chris Bassler, '01 and Tara Garrett, '01, Communications Undergraduate Assistants.

Ball State University Alumni Association
Muncie, IN 47306-0075
Telephone: 765-285-1080
Toll Free: 1-888-I-GO-4-BSU
E-mail: alumni1@bsu.edu.

Copyright © 2002 [Ball State University]. All rights reserved.
Revised: 08 Jul 2003 10:33:23 -0500 .

Comments to the [Webmaster](#).





[Annual Report](#)

[Alumni Staff](#)

[Alumni Leadership](#)

[Alumni Ambassadors](#)

[Alumni Contacts](#)

[Alumni Awards](#)

[Professional and Constituent Societies](#)

[Reunions](#)

[Alumni Programs](#)

[Past Activities Calendar](#)

[Financial Summary](#)

2001 ALUMNI COUNCIL

Executive Committee

Bob Woods, '65EdD90, President
 Cathey Boggs, '71, Vice President
 Julie Bradshaw, '80, Vice President
 Mark Ervin, '81MA85, Vice President
 Wayne Estopinal, '79, Vice President
 Tony Schneider, '80, Past President
 Ed Shipley, '68MA71, Executive Director
 Lori Wean, '85, President Elect

Other Members

Amy Ahlersmeyer, '80
 Jim Andrew, '71
 Tom Andrews, '77
 John Bowles, '67
 Jacque Brown, '74MA77
 Tom Cochrun, '68
 Tom DeWeese, '68MBA69
 Kevin Ervin, '82
 Tom Farris, '67
 Charles Green, '72MAE75EdD82
 Hollis Hughes, '65MA73
 Jackie Johnston, '64MA67
 Jo Ann Johnston, '85MA88
 Jenell, Joiner, '65
 Emily Kress, '69MAE72
 David Land, '69MA74EdS82
 Mike McMillen, '67
 Phil Metcalf, '70
 Ben Robinson, '70
 Don Rush, '59MA64
 Deb Schmucker, '87

COMMITTEE ASSIGNMENTS

Distinguished Alumni Award

1. Jo Ann Johnston, Chair (1 year)
2. Jim Andrew (1 year)
3. Tom Andrews (2 years)
4. Cathey Boggs (1 year)
5. John Bowles (2 years)
6. Jackie Johnston (2 years)
7. Phil Metcalf (1 year)
8. Deb Schmucker (2 years)

Liaison: Sue Taylor

Benny Award Selection

1. Charles Green, Chair
2. Amy Ahlersmeyer
3. Tom Cochrun
4. Ben Robinson
5. Tony Schneider
6. Robin Sparks
7. Kim Stout

Liaison: Ernie Krug

Executive and Finance

1. Bob Woods, Chair
2. Cathey Boggs
3. Julie Bradshaw
4. Mark Ervin
5. Wayne Estopinal
6. Tony Schneider
7. Lori Wean
8. Ed Shipley

Mark Smith, MBA92
Robin Sparks, '89
Craig Stephens, '86
Kim Stout, '82
Sally Tinkel, '64
John Waite, '87
Stephanie Walton, '92

*Ball State University Board of Trustees
Representatives*

Tom DeWeese, '68MBA69
Hollis Hughes, '65MA73

Ball State University Foundation Representative

Tony Schneider, '80



G.O.L.D. Award

1. Julie Bradshaw, Chair
2. Kevin Ervin
3. Emily Kress
4. Dave Land
5. Mike McMillen
6. Deb Schmucker
7. Robin Sparks

8. Craig Stephens
 9. Stephanie Walton
- Liaison: Russ Lawrence

Nominating

1. Lori Wean, Chair
 2. Jacque Brown
 3. Mike McMillen
 4. Tony Schneider
 5. Sally Tinkel
 6. John Waite
 7. Bob Woods
- Liaison: Ed Shipley

Alumni Communications Advisory Board

1. Holly Miller, Chair
2. Tom Cochrun
3. Tony Edmonds
4. Tom Farris
5. Jeannie Hermerding
6. Phil Schemerhorn
7. Bill Spurgeon
8. Kay Stickle



9. Bob Woods

Liaisons: Don Park, Charlotte Shepperd, Ed Shipley

Alumni Scholarship

1. Mark Smith, Chair

2. Jim Andrew

3. Julie Bradshaw

4. Jacque Brown

5. Kevin Ervin

6. Jenell Joiner

7. Emily Kress

8. Don Rush

9. Craig Stephens

Liaison: Tracy Curry

Oliver Bumb Scholarship Selection

1. Mark Ervin, Chair

2. Shelley Catrino, President of Cardinal Corps.

3. Kathy Smith, Cardinal Corps. Faculty Advisor

4. Chris Long, President of St.A.R.T.

5. Margaret Bumb

6. Don Park

Liaison: Ed Shipley

Robert E. Linson Scholarship Selection

1. Ben Robinson, Chair

2. Chris Long, President of St.A.R.T

3. Bob Linson

4. Ed Shipley

5. Bob Woods

Liaison: Sue Taylor

Services

1. Phil Metcalf, Chair

2. Cathey Boggs

3. Jenell Joiner

4. Dave Land

5. Kim Stout

6. John Waite

7. Stephanie Walton

Liaison: Debbie Linegar

Strategic Planning

1. Bob Woods, Chair

2. John Bowles

3. Mark Ervin

4. Wayne Estopinal

5. Tom Farris

6. Jo Ann Johnston

7. Tony Schneider

8. Ed Shipley

9. Lori Wean

Liaison: Debbie Linegar

Technology

1. Wayne Estopinal, Chair

2. Amy Ahlersmeyer

3. Tom Andrews

4. Charles Green

5. Jackie Johnston

6. Don Rush

7. Mark Smith

8. Sally Tinkel

Ball State University Alumni Association
Muncie, IN 47306-0075
Telephone: 765-285-1080
Toll Free: 1-888-I-GO-4-BSU
E-mail: alumni1@bsu.edu.

Copyright © 2002 [Ball State University]. All rights reserved.
Revised: 08 Jul 2003 10:32:17 -0500 .

Comments to the [Webmaster](#).



BSUAA
2000-2001
ANNUAL
report

Alumni
Association
ambassadors

[Annual Report](#)

[Alumni Staff](#)

[Alumni Leadership](#)

[Alumni Ambassadors](#)

[Alumni Contacts](#)

[Alumni Awards](#)

[Professional and Constituent Societies](#)

[Reunions](#)

[Alumni Programs](#)

[Past Activities Calendar](#)

[Financial Summary](#)

Alaska

North Pole

Melissa Gordon, '85MA87EdS87

Arizona

Phoenix

John Rotz, '68

California

Los Angeles

Ben Ramirez, '67MA68

San Francisco

Kelli Burrill, '75

Florida

Fort Myers/Naples

Jim Jackson, '72MAE74EdS82

Jacksonville

Maria Brown, '94

Miami/Fort Lauderdale

Todd Johnston, '91MS92

Orlando

Beverly Brizendine, '74

Tampa/St. Petersburg

Melissa Ransdell, '88

Georgia

Atlanta

Diane Ulrich, '78MAE83

Indiana

Blackford County

Ted Leas, '73

Boone County

Steve Bullington, '85

Cass County

Laura Cain, '86

Grant County

Todd Levy, '74MBA80

Hamilton County

Jim Sparks, '68MA71

Hendricks County

Tom Andrews, '77

Howard County

Marilyn Skinner, '58MA61

Kentuckiana

Glen Snow, '71

Kosciusko County

Jon Parker, '75

Lake County

Foster Stephens, '73MAE78

Marshall County

David Pruis, EdD86

Miami County

Doug Kuepper, '81

Montgomery County

Chuck Streetman, Jr., '69MA72

Randolph County

Ric Study, '76

Shelby County

Mary Elsbury, '77

Steuben County

Rex Bolinger, '73EdS90EdD92

Tippecanoe County

Gayle Hartleroad, '95MA97

Vanderburgh County

Elizabeth Henry, '87MA88EdS89

Wabash County

Kelli Halderman, '91

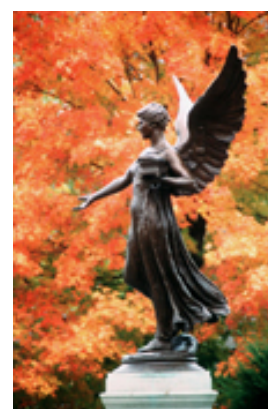
Wayne County

Amy Kienitz, '88

Kansas

Kansas City

John Yount, '68MA73



Massachusetts

Boston Traci Knoblauch, '92

Nebraska

Omaha/Lincoln Susan Staab, '88MS89

Nevada

Reno Fran Torrez, '83

North Carolina

Raleigh/Durham Patrick McMillen, '91

Ohio

Cincinnati Lucy Atkinson, '78
Columbus Craig Stephens, '86

Oregon

Portland Brent Kirk, '84

Tennessee

Nashville Dana McGee, '89

Texas

Austin Chuck Dennis, '92
Fort Worth Sandra Durbin, '61MA66
Houston Steve Moniaci, '79
San Antonio Suzanne Salazar, '78

Virginia

Northern Virginia Ted Bechtel, '72

Washington D.C.

Lana Krstich, '97

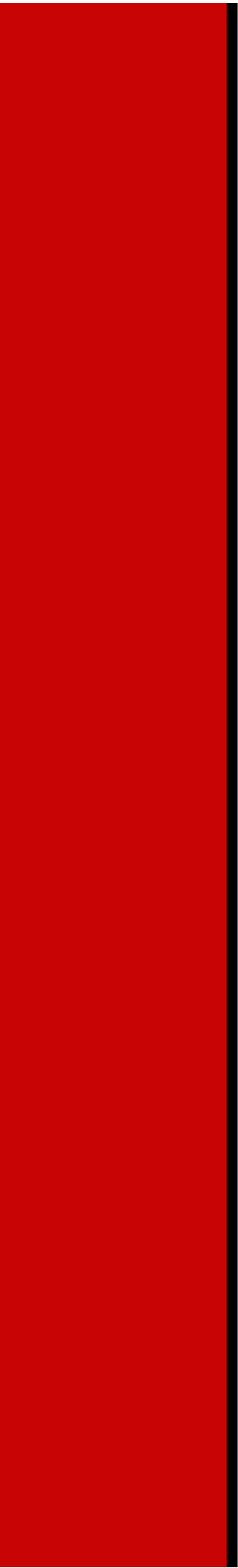
Wisconsin

Milwaukee Dave Fountain, '67MA72
Wyoming Gwen Finger-Oldfield, '74

Ball State University Alumni Association
Muncie, IN 47306-0075
Telephone: 765-285-1080
Toll Free: 1-888-I-GO-4-BSU
E-mail: alumni1@bsu.edu.

Copyright © 2002 [Ball State University]. All rights reserved.
Revised: 08 Jul 2003 10:31:17 -0500 .

Comments to the [Webmaster](#).





[Annual Report](#)

[Alumni Staff](#)

[Alumni Leadership](#)

[Alumni Ambassadors](#)

[Alumni Contacts](#)

[Alumni Awards](#)

[Professional and Constituent Societies](#)

[Reunions](#)

[Alumni Programs](#)

[Past Activities Calendar](#)

[Financial Summary](#)

BSUAA
2000-2001
ANNUAL
report

Alumni
Association
contacts

Board of Trustees

Tom DeWeese, '68MBA69

Alumni Council

Bob Woods, '65EdD90

Ball State University Foundation

Mary Sissel, MA78

Adams-Wells Alumni Board

Shelly Eisenmann, '93

Holly Mahnensmith, '92MAE96

Indianapolis Area Alumni Board

Julie Bradshaw, '80

Michiana Alumni Board

Stephanie Markley, '90

Northeastern Indiana Alumni Board

Charles Green, '72MAE75EdD82

Black Alumni Constituent Society Board

Ben Robinson, '70

College of Architecture and Planning Alumni Board

Sheila Snider, '74

College of Business Alumni Board

Craig Dunn, '75

College of Fine Arts Alumni Board

Myles Ogea, '91MA94

Family and Consumer Sciences Alumni Board

Jackie Johnston, '64MA67



Journalism Alumni Board

James Grim, '80

**Natural Resources and Environmental
Management Alumni Board**

Terry Coleman, '84

Nursing Alumni Board

Janet Noel, '68

Teachers College Alumni Board

Eugene White, EdS81EdD82

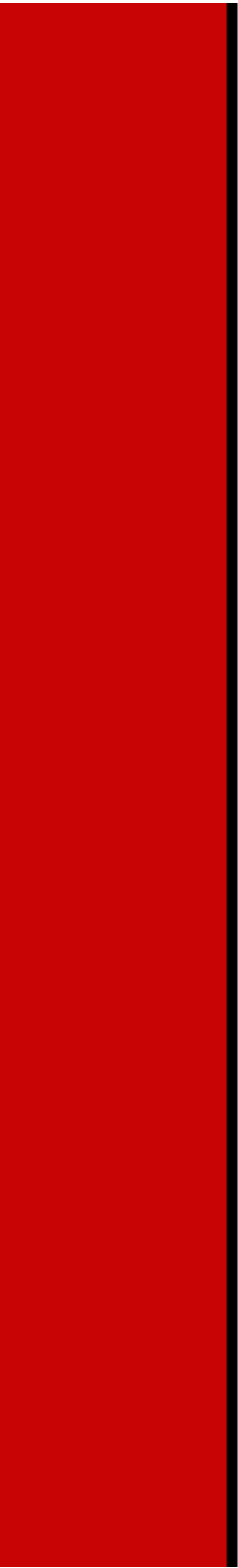
Alumni Communications Advisory Board

Holly Miller, MA77

Ball State University Alumni Association
Muncie, IN 47306-0075
Telephone: 765-285-1080
Toll Free: 1-888-I-GO-4-BSU
E-mail: alumni1@bsu.edu.

Copyright © 2002 [Ball State University]. All rights reserved.
Revised: 08 Jul 2003 10:31:41 -0500 .

Comments to the [Webmaster](#).





[Annual Report](#)

[Alumni Staff](#)

[Alumni Leadership](#)

[Alumni Ambassadors](#)

[Alumni Contacts](#)

[Alumni Awards](#)

[Professional and Constituent Societies](#)

[Reunions](#)

[Alumni Programs](#)

[Past Activities Calendar](#)

[Financial Summary](#)



DISTINGUISHED ALUMNI

The Alumni Association's highest recognition, the Distinguished Alumni Award, was presented to three outstanding graduates at the annual Awards Dinner, Friday, October 13.



BSUAA President, Tony Schneider, Kent Leberherz, Beverley Pitts, Dale Cochard, and President Blaine Brownell

Recipients were Dale D. Cochard, '64, owner and president of Redi-Med Corp Services and partner in several additional businesses; Kent A. Leberherz '68, who recently retired as president of Ameritech Indiana, where he had worked in various capacities for 35 years; and Beverley J. Pitts, MA71EdD81, associate provost at Ball State University.

their profession, community, or society.

The Distinguished Alumni Award was established in 1959 to provide recognition to alumni who have demonstrated loyalty to the university and its Alumni Association, and who have made significant contributions to

BENNY

The Benny Award, the top honor for service to the university or the Alumni Association, recognizes those who have contributed their talents, energy,

and time to Ball State University and the Alumni Association. Eligible candidates are Ball State alumni, university employees, friends of the university, and corporations or businesses that contribute outstanding service.

Benny awards were presented October 13 during the annual Alumni Association Awards Dinner. Recipients included: Frank Bracken; Matt Momper, '83; Dawn Kavanaugh Krabbe, '89; Ric Reece, '78MPA94; Allen Williams, '73; and Dill Street Bar and Grill.

G.O.L.D.

The purpose of the G.O.L.D. (Graduate Of the Last Decade) Award is to annually recognize the outstanding accomplishments of recent graduates. It is designed to include both traditional and non-traditional graduates. Recipients are those who have demonstrated their promise and potential for outstanding endeavors by becoming involved in different aspects of life after college.

Each award recipient must have received his or her initial bachelor's degree from Ball State within ten years of recognition. In addition, the nominee should demonstrate success in his or her professional field and be active in public service to the community, nonprofit organizations, professional organizations, the BSUAA, or Ball State University.

Recipients were selected and recommended by an Alumni Council committee on behalf of the Alumni Association.

2000 G.O.L.D. Awards were presented at the annual Homecoming Awards Dinner. Recipients were: Kacy Andrews, '91; Michele Delaney Herald, '92; John Lewis, '94; Staci Lugar, '95; Tania Said, '93;

and Darcy Wilkinson Keith, '93.

COACH OF THE YEAR

Nineteen alumni received the 2000-01 Ball State University Alumni Coach of the Year Award.

The program was designed to recognize successful Ball State University undergraduate alumni head coaches in each of the Indiana High School Athletic Association (IHSAA) sanctioned sports. The winners were selected by a vote of their coaching peers, Ball State alumni head coaches at other Indiana high schools, and coordinating Ball State coaching staff members in each sport.

The recipients were: Don Sherman, '63MA70, baseball coach at Huntington North High School; Al Gooden, '81, boy's basketball coach at Harding High School; Charlie Hall, '80, girl's basketball coach at Kokomo High School; Chuck Koeppen, '68MA74, boy's cross country coach at Carmel High School; Chuck Koeppen, '68MA74, girl's cross country coach at Carmel high School; Ron Murphy, '87MA90, boy's golf coach at Richmond High School; John Engle, '65MA68, girl's golf coach at Jay County High School; Vonda Cawthorn, '79MA84, gymnastics coach at Marion High School; Mark Nirrengarten, '92, boy's soccer coach at Avon High School; Keith Hauber, '78, softball coach at Lake Central High School; Dan Johnson, '87, boy's swimming coach at Hamilton Southeastern High School; Julie Bradshaw, '80, girl's swimming coach at Plainfield High School; Tim Cleland, '87, boy's tennis coach at Delta High School; Tim Cleland, '87, girl's tennis coach at Delta High School; Mike Holman, '78MA85, boy's track coach at Lawrence Central High School; Bryant Branigan, '94, girl's track coach at North Central High School in Indianapolis; Lisa Pawlik, '84, volleyball coach at Penn High School; Trent McCormick, '91, wrestling coach at Yorktown.

LEGACY SCHOLARSHIP

Alumni Association Legacy Scholarships are awarded to selected entering freshmen or currently enrolled students who are children or grandchildren of active alumni in the Alumni Association. The scholarships are one-time, nonrenewable awards. Recipients must demonstrate success in academics and achievement to be awarded this scholarship. For the academic year 2000-01, 45 scholarships of \$1,600 each were awarded.

Recipients for 2000-01, their hometowns, and their alumni parents or grandparents included:

Sarah Joy Baker, Muncie (Theodore, '80, Gail, '79); Matthew Scott Billman, Speedway (Nancy, '72); Abbey Nicole Browning, Greenwood (Robert, '76, Jeannine, '75); Scott Joseph Bryan, Warsaw (Joseph, '76, Harold, '49, Edna, '47); Sara Christine Carter, Albany (Gregory, '80, Paul, '59); Andrew Marcus Clevenger, Muncie (Mark, '82); Julie Amanda



Legacy Award recipients

Darr, Mishawaka (Nancy, '73); Molly E. Davis, Fort Wayne (Sue, '76); Allison Michelle Demaree, Muncie (Gary, '75, Sarah, '74); Meredith Ellen Demaree, Muncie (Gary, '75, Sarah, '74); Meredith Anne Fancher, Muncie (Christopher, '77, Melanie, '77); Jonathan Thomas Faust, Lafayette (Thomas, '76, Judith, '77); Patrick D. Foley, Muncie (Anne Studier, '73); Meghan Rochelle Folgate, Yorktown (Steven, '81); Elizabeth Renee Gramelspacher, Jasper (Sharon, '80); Kari Lynne Haecker, Oswego (David, '74, Victoria, '75); Jake Raymond Holzinger, Middletown (Cindy, '91); John William Hubbard, New Castle (Judith, '72); Amber Marie Huffman, Montpelier (Kimberley, '94); Elizabeth Anne Keller, Muncie (Paul, '78, Peggy, '75); Abigail Lois Land, Brownsburg (Thomas, '79, Jeanne Larson, '72); Bridget Renee Lassiter, Muncie (Michael, '74); Beth Ann Lesar, South Bend (Alan, '78, Ann, '79); Jill Kristine Mattingly, Speedway (Debra, '78); Jennifer Leigh McKowen, Plainfield (Diana, '77); Mary Kathleen McMillin, Columbus (Ron, '71, Cynthia, '72); Andrew R. Neville, Columbus (Terry, '74); Daniel Jerome Pierce, Muncie (Jerry, '73, Linda Lewis, '72); Krista Janelle Prael, Elkhart (John, '74, Mary Lou, '74); Courtney Amber Renard, Kokomo (Terese, '85); Blythe Elizabeth Rogers, Indianapolis (Douglas, '75); Steven Joseph Samuel, Portage (Ruth Ann, '72); Karli K. Shondell, Muncie (Dave, '81, Angie, '81, Don, '52, Betty, '51); Kate Elizabeth Spisak, Muncie (Sheila, '72); Ann Elizabeth Stalling, Indianapolis

(Sandra, '74); Eric Joseph Suding, Muncie (James, '77, Marla, '93); Scott Sylte, Marion (June, '93); Benjamin Charles Tolle, Muncie (Michael, '75, Ruth, Ann, '77); Erin Christina Warrner, Indianapolis (Harvey, '74, Sally, '73); Jennifer Ann Warrner, Indianapolis (Harvey, '74, Sally, '73); Shannon Marie Weiss, Mansfield (Jewell, '80); Carly Renee Whittern, Muncie (Elizabeth, '77); Jennifer Winchester, Lewisville (Jesse, '77, Joyce, '77); Nicholas Worden, Craigville (Sara, '78, Dorothy Shady, '36, Dwight Shady).

Alumni Legacy Scholarship recipients and their parents were honored September 30 at the President's pre-game luncheon where they met with members of the Alumni Council. With the addition of this year's 45 recipients, 422 students have been awarded a total of \$453,000 through this scholarship since its inception in 1983.

RAY ASHLEY

Maya L. Crevonis, Carmel, was honored with the Ray Ashley Memorial Scholarship for her involvement with Ball State University's 2000 Homecoming Steering Committee.

In addition to her involvement with Homecoming, Crevonis served as secretary of the Student Alumni Relations Team (St. A.R.T.) and was president of her sorority, Alpha Phi. She was also secretary/treasurer of the American Advertising Federation and served as sophomore recognition chairman for the Golden Key International Honour Society.

The Ashley Scholarship, a \$1,500 stipend, was established in memory of Raymond W. Ashley, '41MA52, who devoted 17 years to the promotion of Homecoming activities. The scholarship is given to help promote student involvement in Homecoming and provide recognition, in addition to financial assistance, to Ball State students who contribute outstanding service to Homecoming.

OLIVER C. BUMB

Hilary M. Cassell, Greencastle, was the 2001 recipient of the Oliver C. Bumb Cardinal Corps Scholarship.

In addition to being active in Cardinal Corps at Ball State, Cassell was a member of Alpha Lambda Delta, a national freshman honorary; and Pi Lambda Theta, an international honor society for educators. Her volunteer experience included the Philadelphia City Zoo, Whispering Pines Equestrian Center, Special Olympics State Volleyball Tournament, and Woods Edge Daycare.

The \$1,500 scholarship is awarded each year to an outstanding member of Cardinal Corps, an organization of students who serve as the official hosts and hostesses of the university. The scholarship was established in 1985 by the Ball State University Alumni Association to honor Bumb, a Ball State University administrator and faculty member for more than 30 years and the founder of Cardinal Corps. He retired in 1976 as vice president of public affairs and university development, and died March 22, 2001.

ROBERT E. LINSON



Kelli Hahn accepting the Robert E. Linson Scholarship from Bob Linson

Dr. Robert E. Linson, '47MA48, emeritus vice president for University Relations, served Ball State as executive director of the BSUAA for 25 of his 32 years as a campus administrator. Although retired, his interest in and support of Ball State University has not diminished.

Named in his honor, the Linson Scholarship recognizes student involvement in alumni activities by providing a financial award to one who has contributed time and energy to student- and alumni-related programs at the university.

The 2000 recipient of the Linson Scholarship was Kelli Hahn, '01. Hahn served as general chair of the 1999 Homecoming Steering Committee, chaired the 1997 Parade Band Competition and the 1998 Royalty selection for Homecoming, and was active on the Student Alumni Relations Team for three years. The Perrysburg, OH native majored in urban planning and in economics.

Linson presented the award to Hahn at the October 13 Alumni Awards Dinner in conjunction with Homecoming.

Ball State University Alumni Association
Muncie, IN 47306-0075
Telephone: 765-285-1080
Toll Free: 1-888-I-GO-4-BSU
E-mail: alumni1@bsu.edu.

Copyright © 2002 [Ball State University]. All rights reserved.
Revised: 08 Jul 2003 10:31:29 -0500 .

Comments to the [Webmaster](#).



[Annual Report](#)

[Alumni Staff](#)

[Alumni Leadership](#)

[Alumni Ambassadors](#)

[Alumni Contacts](#)

[Alumni Awards](#)

[Professional and Constituent Societies](#)

[Reunions](#)

[Alumni Programs](#)

[Past Activities Calendar](#)

[Financial Summary](#)



BLACK ALUMNI SOCIETY

The Black Alumni Society board met throughout the year to plan its biennial Black Alumni Reunion scheduled for August 3-5, 2001.

Officers included: Ben Robinson, '70, president and Alumni Council representative; Homer Jackson, '67MAE73EdD82, vice president; Connie Winfrey, '65, vice president; Phil Anderson, '95, vice president; Fred Cox, '74, past president; Sue Taylor, '71, Lori Mallory, '96MA99, and Laura Hale, '98MPA00, BSUAA liaisons; and Ed Shipley, '68MA71, BSUAA executive director.

Members of the board were: Mike Chisley, '73; Eric Crockett, '94; John Hall, '72; Joyce Jamerson, '97; Jenell Joiner, '65; Pamala Morris, '69MAE71; Charmaine Powell, '75; Keith Robinson, '95; Foster Stephens Jr., '73MAE78; Linda Wilson, '72MA74; Charles Payne, faculty representative; and Jaron Crowley, student representative. Ex-officio members were: Charles Green, '72MA75EdD82; Hollis Hughes Jr., '65MA73; Allen Williams, '73; and Wayne Roberts, '87. In addition to the board members listed above, Eldred Coleman, '93, served on the reunion committee.

COLLEGE OF ARCHITECTURE AND PLANNING

The CAP Alumni Society honored five alumni at its annual Alumni Day, Saturday, April 7. Distinguished Alumnus Award recipients were Kerry Harding, '82, and Michael Holtz, '71. Receiving the Award of Outstanding Achievement were Teresa Jeter-Newburn MUR95; Roger Neuenschwander, '73; and Wayne Estopinal, '79.

The CAP Alumni Society Governing Board established the Charles Sappenfield Award of Excellence to honor faculty for their dedication, commitment, and service to CAP. The first recipient of this award was John Wyman.

Alumni Day activities included a lecture by Carol Johnson, tours of the football training facility and the Art and Journalism building, and the annual alumni banquet held at the Alumni Center.

Officers were: Susan Throckmorton, '84, president; Sheila Snider, '74, vice president; Deb Schmucker, '87, Alumni Council representative; Jeff Hall, dean; Michel Mounayar, associate dean; Francis Parker, faculty representative; Patricia Quinn, administrative assistant; Ernie Krug, '69MAE73MAE82, and Andrea Deer, '95, BSUAA liaisons.

Board members were: Ron Fisher, '79; Michael Hollibaugh, '87; Hal Kovert, '76; Dawn Kroh, MLA90; David Kroll MS84; Ron Menze, '79; Jennifer Milliken, '94; Jamie Lake, '95; and Doug Reddington, '78.

COLLEGE OF BUSINESS



Black Alumni Society members Ben Robinson, Connie Winfrey, and Jenell Joiner talking with Blaine and Mardi Brownell



College of Business Dialogue Day 2000. Dean Neil Palomba and guest speaker Wayne Leonard

President of the College of Business alumni board, Suzette Brown, '71, hosted board members at her Fort Harrison office July 12. Throughout the year the group worked with the college to create an e-mentoring program that would assist students in developing their "soft" skills before beginning the interviewing process for employment. Tom Harris, '67MA68, associate professor of management, monitored the resulting pilot program through his spring semester information systems class. Twenty-three alumni and students were paired and communicated electronically for the semester. Jim Ittenbach, '71, board member, conducted focus groups with outside interviewers, alumni, and faculty to determine goals for the program.

Wayne Leonard, '73, CEO of Entergy Corporation, presented the keynote address at Dialogue Day, which was part of UniverCity events in September. Following his address, students attended breakout sessions where several alumni spoke about their businesses and answered questions in the Whiting Building.

A COB alumni board meeting was conducted prior to Leonard's presentation, and again in January prior to the annual Sports and Spaghetti dinner and basketball game.

Approximately 45 business alumni volunteers wrote letters to encourage prospective students to enroll in the College of Business. The letter-writing campaign, which is in its fourth year, assisted in attracting highly-ranked students to the college.

The College of Business Hall of Fame added John D. Harris, '67, managing partner and CEO of Olive, LLP in Indianapolis, to its membership at the fall Recognition Dinner. In May, five additional alumni were recognized for their professional achievements at commencement. Receiving Awards of Achievement were: J. Robert Browning, '76, partner and CPA of Peters, Browning & Company, Indianapolis; E. Renae Conley, '80MBA82, president and CEO of Entergy Louisiana, Baton Rouge; and Thomas L. Farris, '67, president of T. L. Farris and Associates, Muncie. John B. Scheumann, '71, chairman and CEO of Crossmann Communities Inc., Lafayette, and Edward F. Wozniak, '63, chairman and CEO of Wozniak Industries, Oak Brook, Illinois, received Awards of Distinction.

A reception and dinner honoring retiring dean, Neil Palomba, was hosted in May at the Alumni Center.

Insurance and Actuarial Science students, alumni, and faculty met for a spring reception and dinner at the Alumni Center in March. Darcy Wilkinson Keith, '93, commercial underwriter for Meridian Insurance, Indianapolis, presented the keynote address. Student club presidents reported on their organizations and upcoming activities. Steve Avila, MA86, and John Foley co-direct the recently established Center for Actuarial Science, Insurance and Risk Management.

The College of Business newsletter, Network, edited by Marc Ransford, '90, was published twice to inform alumni about activities and news of the college. Noteworthy was the Success magazine recognition of the BSU Entrepreneurship program in its February/March 2001 issue. The Center was ranked in the "Top 25" by Success, and in the "Top 5" Best Business Schools in the nation by U.S. News & World Report this year.

Board officers were: Suzette Brown, '72, president; Craig Dunn, '75, vice president; Mark Smith, MBA92, Alumni Council representative; Dan Prickel, '76MA80, past president. Additional members included: Katherine Arbuckle, '80; Michael Earley, '78; Ray Ferguson, '70; David Heeter, '83; Joe Huffine, '88; Steven Imler, '69; Jim Ittenbach, '71; Leisa Julian, '80MBA83; Julie Kern, MBA83; Deena Nystrom, '83; Krista Schulz, '91; Kevin Walbridge, '82; and Marc Ransford, '90. Faculty members were: Tom Harris, '67MA68; John Fitzgerald; James Duncan; and Neil Palomba, dean. BSUAA representatives were: Ed Shipley, '68MA71, Sue Taylor, '71, Lori Mallory, '96MA99, and Laura Hale, '98MPA00. Craig Dunn became president, and Jim Ittenbach, vice president, in January 2001.

COLLEGE OF FINE ARTS

The College of Fine Arts Alumni board kicked off the school year with a retreat July 21 at the Alumni Center. Interim Dean, Robert Kvam, and faculty members Alain Joyaux and Don LaCasse joined the group to discuss new events and alumni projects.

The college is involved with four major construction projects on campus and plans to host concerts,

open houses, and receptions. The construction includes the Art and Journalism Building, Shafer Bell Tower, and proposed Music Building, as well as Art Museum renovations.

The Alumni Society partnered with the School of Music for an alumni reception at the Indiana Music Educators Conference January 12 at the Westin Hotel, Indianapolis. Next, they hosted the fourth annual Jazz and Java event on April 18 at the Alumni Center. A student art exhibit was featured as part of the event for the first time. Alumni, faculty, musicians, and guests enjoyed flavored coffees, liqueurs, wines, and fine desserts before attending the Art of Jazz concert in Pruis Hall.

Charlie Russell, '71, Dan Conder, '72, and Phil Repp worked together to create a College of Fine Arts alumni Web site, which will be linked to the BSU Alumni Association Web page. Ideally the page will also assist in connecting students to alumni who can answer questions about their professions, networking, or interviewing.

Officers of the CFA alumni board included: Jacque Brown, '74MA77, president; Ann Heintzelman, '83MA88, vice president and Alumni Council representative; and Patricia Theisen, '78, past president. Other members included: Dan Conder, '72; Brent Marty, '92; Ric McFadden, '75; Margaret Merriion, dean; Erwin Mueller, '53DA77; Myles Ogea, '91MA94; Charlie Russell Jr., '71; Pamela Spillman, '86; and Michael Wilson, '95.

Faculty representatives were: Sarah Mangelsdorf, Christine Satory, and Elizabeth Richter. Ex-officio members were: Ed Shipley, '68MA71, BSUAA executive director; Sue Taylor, '71, Andrea Deer, '95, and Kate Webber, '98MA99, BSUAA liaisons. In January, Bill Pritchett, '76MA83, and Patricia Wiehe, '67MA68 joined the board, along with interim dean Robert Kvam. Myles Ogea became president and Jacque Brown, Alumni Council representative.

FAMILY AND CONSUMER SCIENCES



Motivational speaker and trainer Jackie Ramstedt greeted participants at the third annual Career Mentoring Day, hosted by the Family and Consumer Sciences Alumni Board and department at the Alumni Center October 27. Students divided into smaller groups determined by their majors, and were addressed by 21 alumni professionals from those disciplines. Alumni presenters were: Veronica Davis, '99; Angela Abbott, '97MA98; Molly Marshall, '95; Kelly Soracco, '88MS99; Stephenie Long, '95; Michelle McClurg, '99; Andrea Weimann, AA99; Katherine Loser, '76MAE81; and Rae Ann O'Neill, '80MA84.

Also, Gina Schlotterbeck, '93; Lora Fippen, '98; Shadi Haghani, '99; Cassandra Hillman, '91; Ruby Smith, '88MS92; Joel Stengel, '94; Lesli McIntosh, '94; Jill Nelson, '96; Heidi Schneider, '94; Jerry Collins, '76; and Linda Ferrill, '82.



A committee of alumni, faculty, and friends worked to determine the best method to preserve historical documents and information about the department.

Two new editions of the FCS newsletter were published by the department and mailed to all alumni updating them on departmental achievements and events.

Three alumni were presented awards at the biennial Spring Alumni Day in April. Betsy Bobel, '99, Miss Indiana 2000-01, was the keynote speaker and was presented an Award of Merit for her work in taking nutritional programs and information to Indiana elementary students. Barbara Minger, '92MS95, was presented the Award of Achievement for her accomplishments in dietetics and preventative services in the Fort Wayne area, and Patricia Swank, '59MAE69, was presented the Award of Distinction for her work with high school students spanning her 42 year teaching career. Outstanding seniors Jennifer Slavens, '01, and Jeffrey Kolkman, '00, were also present.



Board officers were: Sharon Stephen, '63MA70, president; Jackie Johnston, '64MA67, vice president and Alumni Council representative; Pat Barnes, '68MA72, secretary; and Christina Means, '94, past president. Other members were: Corine Carr, '80BS82MS84EdD98; Bonnie Johnston, '72MA77; Jama Kirby Montgomery, '50MA60; Jeanine

Family and Consumer
Sciences Spring Alumni
Day. Alumni Award
Winners: Top-Barbara
Minger, Middle-Patricia
Swank, Bottom-Betsy
Bobel

LeMaster, '92; Joy Robbins, '69MA72; Katina Roberts, '87; Linda Wallace, '62; Sandra Wimmer, '62MA67; Alice Spangler, department chair; Marla Kurtz '78MA82, faculty representative; and Sue Taylor, '71, and Diane Williams, BSUAA liaisons. In January, Jackie Johnston became president, and new members Suzanne Huber, '69, Mike Landram, '75BS82, and Rae Ann O'Neill, '80MA84, joined the board in the spring.

JOURNALISM

Two alumni were inducted into the Journalism Hall of Fame and three other alumni were honored during the annual journalism awards lunch, April 5, 2001, on campus.

New Hall of Fame members were Myra Borshoff, '69, managing partner of Borshoff Johnson Matthews public relations firm in Indianapolis; and Mary Dale Walters, '80, director of public and investor relations for Wolters Kluwer NV global professional publishing company. The Outstanding Alumnus Award was presented to Bradley Wilks, MA90, managing director of the Chicago office of Ogilvy Public Relations Worldwide; and the Outstanding Young Journalist Award was presented to Michael Marker, '91, vice president for Fleishman-Hillard in Chicago. The Marion Chronicle Tribune, under direction of executive editor Juli Metzger, '85MS88, received the Indiana Journalism Award.

Board members participated in Ball State's Homecoming parade and journalism alumni attended the Homecoming pre-game alumni buffet Homecoming Day. Journalism alumni invited all programs of the College of Communication, Information, and Media to a journalism-hosted event at the Indianapolis Colts Pavilion in April, 2001. Craig Kelley, vice president of public relations for the Colts, was the featured speaker. The Journalism Alumni Association board continued work on its initiatives and goals, revamped award guidelines, participated in Professional-in-Residence programming, and planned to provide a permanent display in the new Art and Journalism Building. The board also planned its involvement in grand opening ceremonies for the building.

The journalism board included: Amy Ahlersmeyer, '80, past president and Alumni Council representative; Susan Akers, '90MA99; Ray Begovich, MA88EdD93; Larry Costello, MA88; Tim Fought, '87; Jim Grim, '80, president; Brian Hayes, '96; Mark Kornmann, '83MA84; Adele Lash, '72; Gene Policinski, '72; Pam Records, '82; Deborah Robinson, '89; Sarah Shrode, '96, Kirby Sprouls, '74; and Lesley Stedman, '91. University members were Marilyn Weaver, '65MA70EdS81, department chairman; Dan Waechter, '87MA93, administrative assistant and assistant professor; Charlotte Shepperd, '68MA75, and Diane Williams, BSUAA liaisons.

LETTERMEN'S ALUMNI "B" CLUB

Four former student-athletes and an athletic trainer were inducted into the Ball State Athletics Hall of Fame September 29. They were recognized during halftime of the Cardinals' September 30 home football game vs. Northern Illinois.

The inductees were: Karen (Bauer) Stenftenagel, '83, women's basketball; Stefanie (Decker) Campbell, '93MA99, women's volleyball; Rick Hall, '89, men's basketball; Sayers "Bud" Miller, athletic contributor; and Winand Willigers, '89, men's swimming.

NATURAL RESOURCES AND ENVIRONMENTAL MANAGEMENT

Alumni representatives at a fall career day provided information about their employment to students and enjoyed a light lunch with board members. At its September meeting at Fort Harrison, the alumni board voted to sponsor an internship day in February at the Alumni Center. Nineteen alumni or employers presented more than 40 internships or employment opportunities. A second event will be held in 2002.

The NREM Alumni Society recognized outstanding professional accomplishments of two alumni at its annual awards dinner in April. John Craddock, '76, Muncie, received the NREM Alumni Award of Distinction. He directed the City of Muncie's Bureau of Water Quality, for the past 30 years. While still a student, he was instrumental in the establishment of the bureau and subsequently was named its director. It is one of the oldest water pollution control agencies in the United States.

Bruce Julian, '73, Fairfax Station, Virginia, received the NREM Alumni Award of Achievement. Currently he serves as the National Policy Coordinator for Water Resources in the U. S. Department of Agriculture's Natural Resources Conservation Service. The service is headquartered in Washington, D. C.



Natural Resources and Environmental Management Day: John Bergman talking to Pam Stills from the Indiana Department of Natural Resources

Julian spearheaded efforts to educate, inform, and raise awareness of human health and safety issues, as well as environmental concerns surrounding the nation's aging watershed infrastructure, including flood control dams built under water resource programs of the Department of Agriculture. Recognized for continuing excellence, he is a recipient of the U. S. Secretary of Agriculture's highest honor award for environmental protection.

2000-01 NREM alumni board officers included: Dean Smith, MA79, president; Terry Coleman, '84, vice president; Emily Kress, '69MAE72, Alumni Council representative; and David Hoffman, '72, past president. Other members were: John Bergman, '71; Michael Womack, MS96; Timothy Johnson, '85; Stan Lengerich, '86; Scott Mynsberge, '77; James Eflin, faculty representative; Hugh Brown, department chair; Sue Taylor, '71, Lori Mallory, '96MA99, and Laura Hale, '98MPA00, BSUAA liaisons; and Ed Shipley '68MA71, BSUAA executive director. In January, Terry Coleman became president, and Timothy Decker, '87; Nikki McClain, '92; and Danesa Stolz, '97 were added to the board, along with Trisha Seymour, '01, as student representative.

NURSING

The board hosted the annual alumni banquet on Saturday, April 28 at the Alumni Center. Activities included reunions for the classes of 1941, 1951, and 1956 and tours of Ball Hospital and the School of Nursing. The board recognized Joyce Newman Giger, MA82EdD86, as the 2001 Outstanding Nursing Alumnus. The graduates of the December 2000 class, May 2001 class, and the 2001-02 scholarship recipients were honored at the dinner.

The board coordinated the annual December and May pinning ceremonies hosted at Pruis Hall. The board awarded \$8,000 in scholarships to nursing students.

Officers were: Janet Noel, '68, president; Sherrill White, AS95, vice president; Ruth Ann Tolle, '76, secretary; Jo Ann Johnston, '85MA88, past president and Alumni Council representative; Phyllis Irvine, director, School of Nursing; Phyllis Chapin, '89MA99, faculty representative; Ernie Krug, '68MAE73MAE82, and Diane Williams, BSUAA liaisons.

Other board members were: Joyce Ann Baldwin, MA77; Mary Buckley, '94; Pam Cole, '80MA89; Sheri Goforth, '71MA86; Kathy Hutson, '80MA82AS92; Doreen Johnson, '79MA86; Nancy Lee, '94; and Connie McIntosh, '89.

TEACHERS COLLEGE

The Teachers College Alumni Association recognized Rex Bolinger, '73EdS90EdD92, as Teachers College Outstanding Alumnus. The board awarded \$13,000 in scholarships for the 2000-01 academic year. The individual scholarships awarded were: Teachers College; Helen Sornson; Earl A. Johnson; A. Garland Hardy; Myrtle D. Toops; Leslie J. Mauth; and Charles M. Kimbrough. The board honored the scholarship recipients with a luncheon.

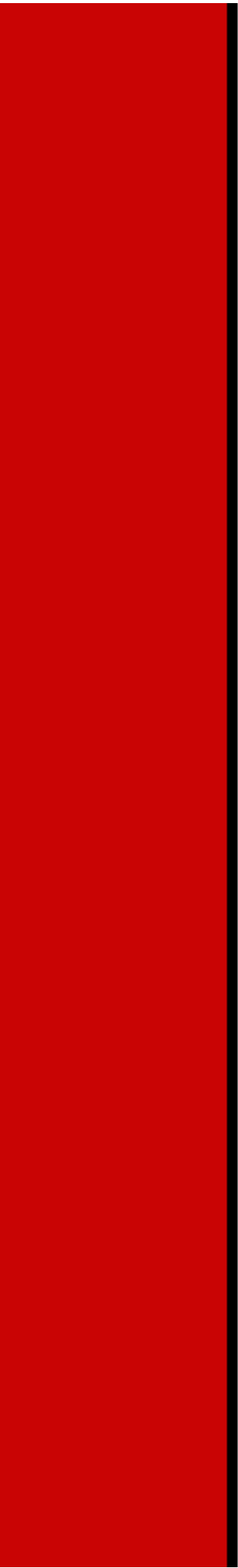
Board officers were: Eugene White, EdS81EdD82, president; Mike Garringer, '74MAE77, vice president; Cathy Palmer, '66MAE72EdD75, secretary; Phil Metcalf, '70, Alumni Council representative.

Other board members were: Terri Austin, '77MA81; Steve Brace, '69; Judy Briganti, '69; Jeannine Browning, '75; Sharon Gunyon, '58MA62; Mary Link, MA69EdD76; David McIntosh, MA87EdS88PhD90, faculty representative; Lynn Ross, '76; Doug Siebert, '68MA70; Roy Weaver, '68MAE71, dean; Lynn Weisenbauch, MA78EdD88; Steve Yager, '73; Ernie Krug, '69MAE73MAE82, Andrea Deer, '95, and Kate Webber, '98MA99, BSUAA liaisons.

Ball State University Alumni Association
Muncie, IN 47306-0075
Telephone: 765-285-1080
Toll Free: 1-888-I-GO-4-BSU
E-mail: alumni1@bsu.edu.

Copyright © 2002 [Ball State University]. All rights reserved.
Revised: 08 Jul 2003 10:33:07 -0500 .

Comments to the [Webmaster](#).





[Annual Report](#)

[Alumni Staff](#)

[Alumni Leadership](#)

[Alumni Ambassadors](#)

[Alumni Contacts](#)

[Alumni Awards](#)

[Professional and Constituent Societies](#)

[Reunions](#)

[Alumni Programs](#)

[Past Activities Calendar](#)

[Financial Summary](#)



HALF-CENTURY CLUB REVISIT

Graduates of 50 years ago or longer met for lunch at the Alumni Center on October 24. Guest speaker at the luncheon was President Blaine Brownell, accompanied by first lady Mardi Brownell. Those attending toured the campus by bus and posed for a group picture before returning home.



Half Century Club Reunion

CLASS OF 1951

One hundred and forty-one alumni and guests from the Class of 1951 met on campus, Wednesday through Friday, June 20-22, to celebrate their Golden Anniversary.



Members of the Class of 1951 reminiscing during "pass the microphone"

Seven participants began their three-day stay by playing 18 holes of golf at the Player's Club, while some of the others attended a Gamma Gamma sorority reunion at the Alumni Center.

A welcome reception and luncheon on Thursday greeted nearly 100 former classmates and their guests. David Gobble, director of the Fisher

Institute for Wellness and Gerontology, challenged the audience to maintain a healthy lifestyle with a balanced diet, physical and mental exercise, and a spiritual foundation. Several humorous memories were shared after lunch as the group "passed the microphone."

Additional guest speakers included Tom Kinghorn, '65MA67, vice president of Business Affairs and Treasurer, Tony Edmonds,

professor of history, and Don Mikesell, '60MA63, dean of students. Ed Shipley, '68MA71, BSUAA executive director, inducted classmates into the Half-Century Club on Friday evening.

Planning events were social committee members: Rollin A. Gill Sr., Lois (Payne) Henderson, Jack Johnson. E. Eugene Lacy, James and Joyce (Lillibridge) Parks, Robert Purtlebaugh, Earl Williams, Susie (Parks) Waters, Nole L. Walters, Joseph Naumcheff, Owen and Pati (Guyon) Lemna, James G. Hunt, Helen Lou (Owen) Benefiel, Stanley Kaminski, and Betty (Hudson) Shondell.

A gift committee coordinated invitations to contribute to the landscaping and gardens at the base of the Shafer Bell Tower when construction is complete. Gift committee participants were: E. Eugene Lacy,

James and Joyce (Lillibridge) Parks, Robert Purtlebaugh, Earl Williams, Susie (Parks) Waters, Nole L. Walters, Joseph Naumcheff, Owen and Pati (Guyon) Lemna, James G. Hunt, Clyde Colvin, W. James Hettler, Betty (Hudson) Shondell, and Justine (Wilcox) Roberts.

CLASS OF 1960

A 40-year reunion luncheon was hosted in the Alumni Center prior to the annual Homecoming game. Morry and Nancy (Gothard) Mannies co-chaired the event. Following lunch the group attended the annual football game and returned to the Alumni Center for a post-game party.

ENGLISH MAJORS

A second reunion of English majors featured remarks by Fran Rippy as she prepared for her spring retirement from Ball State. One hundred thirty-three participants paid honor to Dr. Rippy and reconnected with faculty, staff, and alumni at the April 20 reception in the Alumni Center.

GAMMA GAMMA BIENNIAL REUNION



Forty-five members of the Gamma Gamma Sorority (pre Pi Beta Phi) gathered on June 20 at the Alumni Center to reconnect over lunch. The group visited, sang sorority songs, and took a campus bus tour to see the changes and reminisce over the buildings that they remembered. The next reunion is planned for the summer of 2003.

Gamma Gamma Sorority Biennial Reunion

Alumni Association in hosting men's tennis alumni for a reunion on March 17 at the Alumni Center. Participants were invited to see the collegiate match between the Cardinals and Michigan State early in the afternoon, and then had an Italian buffet and reception in the evening.

MEN'S TENNIS

The men's tennis team and Coach Bill Richards joined the Alumni Association in hosting men's tennis alumni for a reunion on March 17 at the Alumni Center. Participants were invited to see the collegiate match between the Cardinals and Michigan State early in the afternoon, and then had an Italian buffet and reception in the evening.

Guests included MSU Coach and BSU alumnus Gene Orlando, '88; numerous alumni; and the current Ball State men's tennis team.

Ball State University Alumni Association
Muncie, IN 47306-0075
Telephone: 765-285-1080
Toll Free: 1-888-I-GO-4-BSU
E-mail: alumni1@bsu.edu.

Copyright © 2002 [Ball State University]. All rights reserved.
Revised: 08 Jul 2003 10:32:55 -0500 .

Comments to the [Webmaster](#).





[Annual Report](#)

[Alumni Staff](#)

[Alumni
Leadership](#)

[Alumni
Ambassadors](#)

[Alumni
Contacts](#)

[Alumni
Awards](#)

[Professional
and
Constituent
Societies](#)

[Reunions](#)

[Alumni
Programs](#)

[Past
Activities
Calendar](#)

[Financial
Summary](#)



ALUMNI CENTER



The Alumni Center continued to be an integral part of the Alumni Association for hosting events and providing office space for staff. Since the facility opened nearly three years ago, 110,214 alumni and friends of the university have attended events in the Alumni Center.

During the 2000-01 fiscal year, the Alumni Association alone utilized the Alumni Center 124 times for events, bringing in 5,541 guests. The BSUAA is the number-one user of the facility.

To date, more than

14,000 individuals have contributed to making the 50,000-square-foot facility a reality and the number has grown through the continuous support of brick and paver purchases.

Fifty-three professional and support staff, 20 student employees, and 45 volunteers work in the center, where the offices of the Ball State University Foundation, Advancement Services, University Development, and the Alumni Association are housed.

ALUMNI COLLEGE

Alumni College 2001 was consolidated into a one-day event on June 16 that encompassed education, social gatherings, and a cultural affair in one fun-filled occasion.

Participants attended "Classes without Quizzes" and selected from the following sessions: Creating Fruit, Vegetable, and Cheese Displays; Communication and Understanding Between Genders: Is It Possible?; Grilling and Smoking Meats and Vegetables; Indiana Outdoors; Portfolios with Purpose; Frozen Finalé; Everything You Need to Know About Wine; and an Art and



Journalism Building or Bracken House tour.



Chef Allen White demonstrates outdoor grilling and smoking techniques at Alumni College

Alumni College presenters were: Chef Dave Kain; Chef Allen White; Chef Lou Rice, '84; Dr. Laura Shue O'Hara; Dr. Michael O'Hara; Nancy Carlson, MBA84; Rob Tyler, '95; and Vicki Ostby. Tour guides were Ryan Tirre and Anita Kelsey.

Alumni College guests joined BSU faculty emeriti for a picnic and Symphony on the Green concert in the Quadrangle by the Muncie Symphony Orchestra for the day's grand finale. Nearly 200 participants attended the picnic.

ADMISSIONS RECRUITMENT

Prospective Student Receptions

Fall receptions for prospective students were conducted in Schaumburg, IL and Indianapolis by Ball State's Office of Admissions with the assistance of alumni. Fall receptions were geared toward high school seniors and provide them with information about the academic programs and services offered at Ball State. Alumni volunteers staffed registration tables and welcomed parents and students to the receptions. Spring mini-receptions were held in Indianapolis, Cincinnati, OH and Fort Wayne. Mini-receptions were geared toward high school juniors who are beginning the college-search process. A total of 31 alumni volunteers served as ambassadors at the receptions. A list of last year's admissions receptions is included in the past activities section of this report.

Cardinal Alumni Recruitment Team Alumni/Admission Partnership

The Cardinal Alumni Recruitment Team (CART) is a network of alumni volunteers from around the world who assist Ball State University with student recruitment.

Formed in 1999 by the Alumni Association and the Office of Admissions, the CART program has grown in its second year to include more than 70 members in 13 states and 2 countries. School Advocates, a special segment within CART, are Indiana high school teachers who serve as Ball State ambassadors to students within their schools. The mission of the CART program is to identify, recruit, and retain quality students for Ball State University.

During 2000-01, CART members worked at admissions receptions, referred students to Ball State University, distributed scholarship information to students, and represented Ball State University at college fairs. On February 3, CART members hosted a bus trip bringing 122 prospective students from Gary and Chicago to campus for the day. Students were served lunch, received admissions and financial aid information, had a question-and-answer session with current BSU students from their area, met with counselors, and attended a Ball State basketball game.

The Cardinal Alumni Recruitment Team awards ten \$500 scholarships to incoming freshmen at Ball State. The following students received CART scholarships for the 2000-01 academic year: Monica Abernathy, Elwood High School, Elwood; Joel Chappo, Valparaiso High School, Valparaiso; Elizabeth Hall, Covington High School, Piqua, OH; Jonathan Lamb, Yorktown High School, Yorktown; Jennifer Legge, Norwell High School, Markle; Joshua Lindsey, R. Nelson Snider High School, Fort Wayne; Nathan Pugh, Monroe Central High School, Farmland; Aimee Rodal, Richmond High School, Richmond; Jennifer Winchell, Heritage Hills High School, Santa Claus; and Christopher York, Bluffton High School, Bluffton.

Alumni Legacy Scholarship

Alumni Association Legacy Scholarships are awarded annually by the Alumni Council to show appreciation to alumni who have contributed to the enrichment and growth of Ball State University through active membership in the Alumni Association. These scholarships are available to entering freshmen or currently enrolled students who are children or grandchildren of alumni. The scholarships

are one-time, nonrenewable awards. The first Alumni Association Legacy scholarships were given in 1983 and since that time 422 students have been awarded a total of \$453,000 through the scholarship program.

For the 2000-01 academic year, 45 scholarships were awarded at \$1,600 each. For a listing of the 2000 recipients, their parents and/or grandparents, and hometowns, see the Awards and Scholarships section of this report.

Cardinal Legacy Award

In 1999 the Alumni Association instituted the Cardinal Legacy Award to assist in the recruitment of out-of-state legacies. Children and grandchildren of Ball State alumni are eligible for the award that provides a tuition waiver of \$2,500 per academic year for up to four years (five for approved five-year programs). Students receiving this award must maintain a 2.0 cumulative GPA or higher to remain eligible. In 2000-01, 15 students received funding through the Cardinal Legacy Award program.

ALUMNI ACTIVITIES

Indiana Alumni Clubs

Alumni clubs promote the advancement of interests of Ball State University. They aid in the development of a closer fellowship among alumni, assist in the recruitment of outstanding students, work to achieve better-informed alumni, and increase the stature of Ball State University. Clubs serve geographic areas where there are a significant number of alumni.

Volunteers organize activities that help develop and continue relationships that are of benefit to alumni and friends of Ball State. Some club activities included social and educational events, such as continuing professional education seminars for CPAs and accountants, holiday shopping trips, TGIF and TGIM gatherings, summer golf and dinner outings, and picnic and baseball outings.

Alumni clubs continued to improve existing activities and searched for new and exciting ways to involve alumni and friends of Ball State. The Greater Indianapolis Area Alumni Club continued to expand the number of opportunities available to area alumni. Steph Meyers, '91MA92, organized a Harness Racing outing at Hoosier Park in Anderson. The BSU Alumni Club of Northeastern Indiana continued with the well-attended golf and dinner outing and the winter TGIF outing. The Michiana Alumni Club hosted an annual Casino Night and auction in the spring. The Adams-Wells Alumni Club offered area alumni and friends a golf and dinner outing and a picnic and baseball evening for the family.

Adams-Wells

Club officers were: Shelly Eisenmann, '93, and Holly Mahnensmith, '92MA96, co-presidents; Stan Kunkel, '78, vice president; Don Rush, '59MA64, Alumni Council representative. Other board members were: Ned Emshwiller, '67; Barb Engle, '67; Phil Grove, '96; Scott Longenberger, '90; Jerry Penrod, '65MA71; Nicki Schultz, '97MA99; Bruce Skiles, '81; Steve Skiles, '76; and Seth Whicker, '92.

Greater Indianapolis

Club officers were: Julie Bradshaw, '80, president; Tom Andrews, '77, vice president; and John Waite, '87, Alumni Council representative. Other board members were: Bob Browning, '76; Brenda Cox, '84; Chad Ellis, '96; Kevin Ervin, '82; Julie Griffith, '79; Mark Hess, '80; Dick Isenhour, '75MA82; Sam Kilmer, '91; Mark McClintock, '95; Kara Lippie, '94; Steph Meyers, '91MA92; Tom Nowak, '86; Deb Petro, '88; and Peggy Young, '93.

Michiana

Club officers were: Steph Markley, '90, president; Jennifer Crist, '90, vice president; Dick DeCraene, '64, and Kim Stout, '82, Alumni Council representatives. Other board members were: John Court, '99; Kristin Farwig, '91; Kathy Kelley, '79MA82; Phil Panzica, '77; Amy Richardson, '96; Jerry Rummel, '72; Stan Rupnow, '63; Steve Schafer, '77; Jane Simons, '89; Brian Sloan, '91; Larry Struble, '62; Vince Von Der Vellen, '87; and Bob Woods, '65EdD90.

Northeastern Indiana

Club officers were: Charles Green, '72MA75EdD82, president; Mike McKay, '87, vice president; and Mike McMillen, '67, Alumni Council representative. Other board members were: Jeffrey Brock, '94; Linda Buskirk, '78; Russ Crumback, '82; Karen Francisco, '82; Jo Ann Johnston, '85MA88; Cal Lee, '60; John Martin, '90; Barb Minger, '92MS95; Matt Momper, '83; Eric Olson, '83; Leigh Smith, '72; Scott Tinkel, '89; and Brenda West, '87.

ALUMNI ID

The Alumni ID served multiple purposes during 2000-01. Uses included a photo identification card, discount card (C.A.R.D.-Cardinal Alumni Retail Discount), library card, and Rec Card. By the end of the fiscal year, 1,591 cards had been issued.

Discount Card

The C.A.R.D. (Cardinal Alumni Retail Discount) program was established in 1999 in an effort to partner with local merchants. Discounted merchandise, prices, and services were provided to those alumni and friends of the university who displayed their Alumni ID.

The following merchants participated in the C.A.R.D. program in 2001: A Place to Tan, American Cleaners, Applebee's Grill and Bar, B&B/Kirks Bike Shop, BB's Celebration Center, Best Western-Muncie, Captain D's, Concannon's Pastry Shop, Donatos Pizza, French Tex Cleaners, Greeks Pizzeria, Holiday Inn Express, Incredible Yogurt, Keihn Accounting Services, The Locker Room, Lucy!Lucy, Maui Tanning, Paul's Flower and Gift Shop, Pazol's Jewelers, Pete's Duck Inn, The Players Club, Ponderosa Steakhouse, Rose Carpet and Upholstery Cleaning, Scotty's Brewhouse, Slick Track Raceway, Stadium Marathon, Standt's Fine Jewelry, Szechuan Garden, Van Deusen's Family Hair Centers, Vogue Cleaners, and White River Landing.

Library Card

The Alumni ID served as a library card at University Libraries that enabled alumni to reserve books and periodicals without charge.

Recreation Privileges

Active members of the Alumni Association, their spouses, and dependents were eligible to obtain or renew their alumni Recreation Facilities card with a \$150 annual fee. Access was available to Ball State's exercise rooms, weight rooms, indoor pools, racquetball courts, and locker and shower facilities.

Rec Card

The Alumni Association began production of the Rec Card for the office of Recreation Programs during the past year for various BSU-affiliated persons. Recreation Programs verified the status of 319 individuals for the BSUAA to issue a card. Admission was permitted to Ball State's exercise rooms, weight rooms, indoor pools, racquetball courts, and locker and shower facilities.

BANK CARD

The partnership with First USA Bank continued to be profitable for the Alumni Association. Revenue generated since the September 1996 partnership totaled \$412,369.85.

There were 7,379 active accounts that contributed monetarily to the BSUAA with every purchase. Funds generated through the bank card financially helped administer the programs and services the Alumni Association coordinated throughout the year.

CARDINAL CORNER, INC.

After 19 years in operation, Cardinal Corner remained the merchandising arm of the Alumni Association. It is owned by the Alumni Association and is a for-profit corporation. Revenue produced through Cardinal Corner was used to support BSUAA programs. At the end of the fiscal year, the operating balance was \$128,305.18. During the fiscal 2000-01 year, the corporation successfully served as a vehicle to provide alumni with merchandise incorporating the Ball State logo.

CAREER SERVICES

The use of technology continued to play an important role in alumni career services. Career networking fairs were also a key resource available to students and alumni seeking career guidance.

The Career Alumni Network (C.A.N.) remained an important career service with 445 users. C.A.N., a networking program, consisted of 228 alumni volunteer consultants and continued to be available online via the BSUAA Web site where participants could search the list of consultants by occupation, company name, and geographic location.

Another career resource available online was the Indiana Jobs Marketplace. This online service provided links to several company web sites in Indiana with information technology job postings. Members of the marketplace included: Access Technology, Allegiant Technology Group, Ambassador,

Aprimo, Aston IT Group, Baker Hill, Bell Tech.logix, BitWise Solutions Inc., CTI Group, Complete Business Solutions Inc., DataShare Corporation, eTapestry.com, Gabriel Interactive Inc., Hertzler Systems Inc., Indiana Information Technology Association, Joseph Graves Associates Inc., Major Hospital, Management Recruiters of Indianapolis, Maxim I/T, Onex, Ontario Systems Corporation, Premier Solutions, Professional Data Dimensions, Quest Information Systems, Sherry Laboratories, Tivoli, USA Group, and Vector Technologies Inc.

The Alumni Association continued to be a sponsor of annual career fairs hosted and coordinated by the Career Center at Worthen Arena.

Career Information Day was conducted on September 13, 2000. More than 160 prospective employers and graduate school representatives were available to discuss possible employment, internships, and graduate school programs.

On March 21, representatives from 128 companies (33 of whom were alumni) were available during the Cardinal Job Fair. The event attracted 1,500 students seeking part-time and summer employment, internships, and full-time jobs.

Four hundred fifty-three students attended the Teacher Fair that took place May 2-3, 2001. The fair offered education majors the opportunity to collect information, distribute resumes, and interview with 204 school corporations (61 alumni representatives) from Indiana and across the country.

COLLEGIATE LICENSE PLATE

The Alumni Association, in cooperation with the Indiana Bureau of Motor Vehicles, annually issues Ball State University special recognition plates to interested alumni, parents, students, and friends of the university.

Passenger cars, recreational vehicles, and trucks weighing less than 11,000 pounds can be plated for the cost of \$25 per year in addition to standard registration fees.

Initiated in 1992, the license plate program has grown in popularity. A total of 2,644 Ball State license plates were purchased in 2000.

CORPORATE SPONSORSHIP

The BSUAA and the Ball State Federal Credit Union established a corporate sponsorship agreement for 18 months beginning in June 2001. The program's goal is to benefit both parties by providing services, including financial services, to BSU alumni.

As a corporate sponsor of the BSUAA, the BSFCU has its logo/name recognition on BSUAA-generated and printed items, World-Wide Web homepage, and verbal acknowledgement and recognition during appropriate engagements.

GREEK OUTREACH

The Alumni Association coordinated fraternity and sorority events during the 2000-01 fiscal year. They included golf outings, reunions, and Homecoming events. Below lists the events and groups that participated:

Golf outings

Groups hitting the links and reconnecting friendships during the summer of 2000 were Sigma Phi Epsilon, Beta Theta Pi, and Sigma Chi.

Homecoming

Three Greek groups took advantage of the Alumni Association Homecoming package and gathered at the Alumni Center to celebrate Homecoming 2000. They were Sigma Phi Epsilon, Sigma Tau Gamma, and Theta Chi.

Printing and Mailing

The Alumni Association assisted with the printing and mailing of newsletters and publications for many fraternities and sororities. The Alumni Association provided gummed or electronically placed labels, free of charge.

Sigma Chi Class of 1990 Reunion

Ten members of the Spring 1990 pledge class reunited at the Alumni Center on the ten-year anniversary of their activation. The group ate lunch at the Alumni Center, watched the Cardinal football team in action, and then met back up that evening for more memories.



Homecoming Parade

HOMECOMING

Ball State's Homecoming 2000, "Dancin' In The Streets," was a great success. Alumni, the campus community, and area residents showed their pride during the week-long festivities.

Traditional events such as Air Jam, the Bed Race, and the annual parade were punctuated with a newly formatted Opening Day event and Wednesday evening's Spirit Event. The Homecoming king and queen and their courts were announced at the conclusion of the 16th annual Talent Search.

Homecoming Day was capped with a football game victory, as the Cardinals toppled Eastern Michigan, 33-14. The weekend also included the Friday night Alumni Awards dinner, during which Distinguished Alumni, Benny Award recipients, and G.O.L.D. Award recipients were honored.

Distinguished Alumni included Dale Cochard, '64; Kent Lebherz, '68; and Beverley Pitts, MA71EdD81. Benny Award winners were Frank Bracken; Matt Momper, '83; Dawn Kavanaugh Krabbe, '89; Ric Reece, '78MA94; Allen Williams, '73; Arno Wittig; and Dill Street Bar and Grill.

Recent graduates receiving G.O.L.D. Awards were Kacy Andrews, '91; Michelle Delaney Herald, '92; John Lewis, '94; Staci Lugar, '95; Tania Said, '93; and Darcy Wilkinson Keith, '93.

INFORMATION TECHNOLOGY

The Alumni Association continued to strive to improve and enhance its communication with the use of technology. NEWS from the Cardinal's Nest, an e-mail communication (or e-newsletter), was established in March to remain connected with alumni via email. Its contents included news and announcements about Ball State University and the Alumni Association. The complimentary e-newsletter continued to be sent monthly to active alumni. Alumni who did not receive the first issue were able to sign up for the service online via the BSUAA Web site, where they could also complete an evaluation of the e-mail communication.

E-mail was also utilized to send reminders about Alumni Association events to alumni initially notified by regular U.S. mail to increase attendance for activities.

The BSUAA Web site remained a top priority of the technology staff and continued to be updated and reviewed. Developing online services, including the ability to fill out forms, make requests, and have them submitted via e-mail, was the main focus of the efforts.

The portion of the BSUAA Web site devoted to Cardinal Corner was converted



Top-Homecoming Queen, Liz Grau, and King, Tommy Rector

Middle-Blaine and Mardi Brownell during the parade

Bottom-Homecoming Talent Search

to an online secure shopping site in April. Visitors to the site were able to purchase merchandise using a credit card. Items available included home and office accessories, address labels, clothing, golf items, Homecoming promotional items, the BSU license plate, and wall posters.

Other online services that continued to be available via the Web site included the Alumni Registry/E-mail Directory with 7,355 participants, the Alumni Locator Service, and Class Notes Online.

The overall content and services of the site continued to expand, specifically with the addition of the prospective student referral form, BSUAA policies, and upcoming events and reunions.

Future plans for enhancement of the Web site include allowing for online event registration and payment, enabling alumni to make reservations and pay for events online with a credit card.

INSURANCE PROGRAM

The BSUAA in partnership with American Insurance Administrators (A.I.A.), offered three programs to alumni and their families. They were GradMed, short-term medical insurance; GradGift, free life insurance policy to new graduates; and AlumniTerm, life insurance for alumni.

GradMed continued to provide coverage for job-seeking alumni and alumni temporarily without benefits. The final response rates for the July and December 2000 classes were 3.5% and 4.8%, respectively. The annual GradMed royalty fee for the 2000-01 fiscal year totaled \$1,630.

The GradGift Life Insurance policy was offered to recent graduates of the July and December 2000, and May 2001 classes. The final acceptance rates for the July and December 2000 classes were 11.2% and 16.7% respectively. Results for the May 2001 class were inconclusive. Continuation rates during the voluntary phase showed the BSUAA above the average of the rates achieved for classes in comparison to other Alumni Association continuation rates. The royalty fee paid to the Association in August 2000 totaled \$324.18.

The AlumniTerm Life Plan continued to expand during the year. The number of policies increased by 9.6% during the past 12 months to 239, with an annualized in-force premium of \$26,062.05. More than \$12 million of term life insurance protection was in effect for Ball State University alumni.

NEW GRADUATE MAILING

The new graduate mailing continued to be a marketing tool for the Alumni Association for May, July, and December graduates.

The mailing consisted of a letter from Executive Director Ed Shipley welcoming graduates to the Alumni Association; a Garfield brochure that highlighted the BSUAA and its programs; an alumni file form that updated recent graduate records; a decal; a complimentary BSU license plate form; and a free address label offer.

For July and December 2000, and May 2001 graduation classes, a total of 3,129 packets were mailed, 472 file forms were returned for a 15% conversion rate. In addition, 57 complimentary BSU license plate offers were accepted.

PUBLICATIONS

The Ball State Alumnus magazine was mailed during fiscal year 2000-01 to an average circulation of 106,868 households. The Alumnus, with cover designs by CS Kern in Muncie and printing by Sport Graphics in Indianapolis, included feature and news stories covering campus and alumni events, in addition to class notes provided by alumni. Editorial content was determined by the staff's editorial board.

The Alumni Association communications staff produced more than 200 individual projects in addition to the magazine, including the annual, full-color calendar. The calendar was distributed to major donors and friends of the university and included photographs of campus buildings that were taken by Ball State's Photo Services.

The communications staff, under the direction of Charlotte Shepperd, '68MA75, consisted of Alumnus assistants Susan Holloway and Maggie Study, '70; graduate assistants Todd Berk, MS01; and Rob Higley, MBA01; and undergraduate assistants Chris Bassler, '01; Tiffaney Day; Lisa Fosnaugh; Tara Garrett, '01; Jackie Shubert; and David Westbrook.



REGIONAL OUTINGS

Alumni club members, alumni ambassadors, alumni leaders, and the Alumni Association hosted regional outings throughout the country during 2000-01. The following is a sample of those outings:

Football pre-game outings were conducted at the University of Florida on September 2; Kansas State University on September 16; and at the University of Buffalo on October 21. In addition, outings were hosted in association with the men's and women's MAC basketball tournament in Cleveland, OH in March. Ball State vs Miami-ESPN2 Basketball Watch Parties were hosted February 11, 2001 in West Chester, OH; Fort Meyers, FL; Novi, MI; Chicago, IL; Arlington, VA; Portland, OR; Columbus, OH; Kenosha, WI; Tampa, FL; Miami, FL; Granger, IN, and Raleigh, NC.

Seventy-seven Dallas-Fort Worth area alumni and friends met at the Hyatt Regency in Dallas on March 1 for a reception with president Blaine Brownell and Roy Weaver, '68MA71, Dean of Teachers College. Alumni Ambassador, Stephanie (Buzan) Walton, '92, hosted the event.

Forty-five alumni and guests gathered at the Washington, D.C. Hilton on October 19, in conjunction with the American Honors Conference for an after-work social hour. Guest from Ball State included Tony Edmonds, Jim Ruebel, and Arno Wittig. Alumni Ambassador, Lana Krstich, '97, hosted the event.

Eighteen inches of snow could not keep 42 Chicagoland alumni, guests, and Ball State advancement professionals from a good time at the Rock Bottom Brewery in December. Everyone met after work for refreshments and snacks.

Chicagoland alumni and guests gathered at The United Center for a pre-game buffet and refreshments before watching the Blackhawks hockey game on January 14. Thirty-nine alumni and guests watched the Blackhawks skate to a 2-2 tie with the eventual Stanley Cup Champions, Colorado Avalanche.

SPECIAL PROGRAMS

Presidential Receptions

Receptions were held in July and August to introduce Ball State's new president and first lady, Blaine and Mardi Brownell, to alumni. Dr. and Mrs. Brownell greeted alumni at the Alumni Center in July, and traveled to Fort Wayne, Mishawaka, and the NCAA Hall of Champions in Indianapolis in August. President Brownell also spent an afternoon and several evenings visiting in Florida with alumni in Fort Myers, Sarasota, Tampa, and Orlando in January.

Presidential Inauguration

December 1, 2000 marked the inauguration of Blaine A. Brownell as Ball State's twelfth president. Tony Schneider, '80, president of the Ball State University Alumni Association, spoke on behalf of the more-than 136,000 alumni and Tom DeWeese, '68MBA69, Board of Trustees Representative for the Alumni Council, installed the president.

Senior Salute

The Alumni Association participated in Senior Salute, a new event brought to Ball State by Jostens on March 28-29.

The event combined the essential departments on campus for one-stop commencement shopping.

Departments that participated in addition to the Alumni Association were the Commencement Office, for degree verification; the Career Center, for job searching; and the Graduate School, for additional degree opportunities. Also, Barnes and Noble Bookstore representatives were on hand with BSU merchandise and Jostens made available graduation announcements, class rings, and student regalia.

St.A.R.T. members manned the Alumni Association booth and distributed information related to the Senior Congrats Party.

SPECIAL PROJECTS

BSUAA Bottled Water



Frank Bracken and Tom DeWeese installing Blaine Brownell as the 12th president of Ball State University

The Alumni Association, in conjunction with Kammer Bottled Water in Muncie, created BSUAA bottled water. The main reason for designing and bottling BSUAA water was to give alumni a healthier alternative at events and meetings. The 16.9 ounce bottles are available for sale, but primarily used for alumni functions.

St.A.R.T.

During the 1984-85 school year, the Student Alumni Relations Team (St.A.R.T.) was formed to foster interaction between students and alumni of Ball State University, as well as to educate students on the mission of the BSUAA. More than 400 students have been members of St.A.R.T. throughout the last 17 years. During fiscal year 2000-01, members volunteered at various Homecoming events, reunions, and other events, serving as ambassadors for the Alumni Association. Ed Shipley, '68MA71, and Russ Lawrence, '94, were advisors to the group.

On two separate occasions in February, 41 and 28 junior high students from Elkhart were invited to a Ball State University basketball game. The groups, hosted by St.A.R.T., were served pizza and refreshments in the Alumni Center before going to the game.

On Friday, May 4, St.A.R.T. hosted the annual Senior Congrats Party at the Alumni Center for the first time for May, July, and December 2001 graduating seniors. Refreshments, food, door prizes, and T-shirts were compliments of the BSUAA and participating merchants. More than five hundred seniors, guests, and university officials attended.

Officers were: Chris Long, president; Amy Moulis, '01, vice president; Maya Crevonis, secretary; and Kami Myers, membership coordinator. Other members included: Chris Clark, '01; Ben Csikos; Laura Ernstberger, '01; Sarah Ernsteberger; Justin Fekete, '01; Jason Foust; P.J. Geiger; Jesse Jett, '01; Amy Leman; Tara Mauer; Amy Morris; Amy Perkins; Emily Rignall, '01; Matt Roberts; Danielle Sergeant, '01; Karli Shondell; Tyler Starkey; Cori Tilker; Nick Webster; and Shaunda Young.

Senior Congrats Party sponsors included: A Place to Tan, Alpha Chi Omega Sorority, American Eagle Outfitters, Berry Patch Tanning, Blimpie, Delta Tau Delta Fraternity, Family Video, First Merchants Bank, Ford's Mens Wear, Indiana Technologies, Kerasotes Theaters, LaBamba, Maui Tanning, Meijer, MITs, McDonalds, Papa John's-Tillotson, Pizza King, The Player's Club Golf Course, Reese Flying Service, Inc., Scotty's Brewhouse, Subway, TIS Bookstore, and Ultra Image Tanning.

Ball State University Alumni Association
Muncie, IN 47306-0075
Telephone: 765-285-1080
Toll Free: 1-888-I-GO-4-BSU
E-mail: alumni1@bsu.edu.

Copyright © 2002 [Ball State University]. All rights reserved.
Revised: 08 Jul 2003 10:32:44 -0500 .

Comments to the [Webmaster](#).





[Annual Report](#)

[Alumni Staff](#)

[Alumni
Leadership](#)

[Alumni
Ambassadors](#)

[Alumni
Contacts](#)

[Alumni
Awards](#)

[Professional
and
Constituent
Societies](#)

[Reunions](#)

[Alumni
Programs](#)

[Past
Activities
Calendar](#)

[Financial
Summary](#)

BSUAA 2000-2001 ANNUAL report

Alumni Association past events

JULY 1, 2000 TO JUNE 30, 2001

2000

<i>JULY</i>	<i>Event</i>	<i>Attendance</i>	<i>Venue/City</i>
7	Reception for Blaine and Mardi Brownell	328	Alumni Center
8	Black Alumni Constituent Society Board Meeting	14	Alumni Center
8	Three Rivers Festival Parade	20	Fort Wayne
10	Indianapolis Area Picnic and Baseball Outing at Victory Field	80	Indianapolis
11	Eastern Indiana Area Golf and Dinner Outing at Winchester Golf Club	53	Winchester
12	College of Business Alumni Board Meeting	16	Indianapolis
13	Kokomo Area Golf and Dinner Outing at Wildcat Creek	51	Kokomo
20	Northeastern Indiana Area Golf Outing at Autumn Ridge	73	Fort Wayne
21	College of Fine Arts Alumni Board Planning Retreat	15	Alumni Center
22	Homecoming Steering Committee Meeting	16	Alumni Center
25	CAP Alumni CEU Outing	12	Westfield
25	Accounting Alumni CPE Outing at Lutz's Restaurant	29	Noblesville
25	Indianapolis Area Golf and Dinner Outing at Pebble Brook	63	Noblesville
29	Chicago Area Roof Top Outing - Cubs vs San Francisco	75	Chicago IL
30	Chicago Area Roof Top Outing - Cubs vs San Francisco	74	Chicago IL
<i>AUG</i>	<i>Event</i>	<i>Attendance</i>	<i>Venue/City</i>
3	Sigma Phi Epsilon Golf and Dinner Outing at Hickory Hills Golf Club	53	Farmland
6	Indianapolis Area Alumni Outing at Hoosier Park	76	Anderson
8	College of Business Alumni Planning Session	11	Alumni Center
10	Ft. Wayne Area Picnic and Baseball Outing	32	Fort Wayne
12	Beta Theta Pi Golf and Dinner Outing at Ironwood Country Club	59	Indianapolis
16	Family and Consumer Sciences Career Mentoring Day Committee Meeting	7	Alumni Center
19	Sigma Chi Golf and Dinner Outing at Royal Hylands Golf Club	58	Knightstown
20	Homecoming Steering Committee Meeting	11	Alumni Center
22	Blaine and Mardi Brownell Reception at the Embassy Center	110	Fort Wayne

23	Nursing Alumni Board Meeting	13	Alumni Center
23	Blaine and Mardi Brownell Dinner at the Skyline Club	13	Indianapolis
26	Symphony on the Prairie	91	Indianapolis
27	Homecoming Steering Committee Meeting	17	Alumni Center
28	Michiana Area Alumni Club Meeting	13	Mishawaka
28	Blaine and Mardi Brownell Reception at Windsor Park Conference Center	91	Mishawaka
30	Blaine and Mardi Brownell Reception at the NCAA Hall of Champions	202	Indianapolis
	SEPT Event	Attendance	Venue/City
1	Florida Football Send-Off	60	Alumni Center
4	Homecoming Steering Committee Meeting	16	Alumni Center
6	Homecoming Fall Information Meeting	80	Student Center
6	Alpha Phi Reunion Committee Meeting	4	Muncie
7	Student Receptionist Meeting	7	Alumni Center
10	Homecoming Steering Committee Meeting	17	Alumni Center
11	Family and Consumer Sciences Alumni Board Meeting	13	Alumni Center
11	Homecoming Air Jam/Royalty Fashion Show MC Auditions	26	Student Center
11-13	Homecoming Royalty Voting	2,188	Campus
12	NREM Alumni Board Meeting at Fort Harrison	11	Indianapolis
13	Career Information Day	92/164/1200	Arena
13	College of Business Alumni Planning Meeting	10/264	Alumni Center
15	Kansas State Football Send-Off	25	Alumni Center
17	Homecoming Steering Committee Meeting	13	Alumni Center
20	Homecoming Royalty Fashion Show - Top 10 Announcement	342	Pruis Hall
20	CART Recruitment/Alumni Dinner	10	Puerto Rico
22	College of Business Alumni Board Meeting	15	Whiting Business Building
22	College of Business Dialogue Day	150/560	Pruis Hall/Whiting Business Building
23	Journalism Alumni Board Meeting	10	Alumni Center
24	Homecoming Steering Committee Meeting	14	Alumni Center
24	Cardinal Zoofari	862	Fort Wayne
24	CART Luncheon/College Fair	4/300	Cincinnati OH
25-26	Homecoming Student Scholarship Talent Search Auditions	80	Student Center
26	St.A.R.T. Meeting	15	Alumni Center
26	CART at Cave County College Fair	1/25	Cave City KY
27	College of Architecture and Planning Alumni Board Meeting	16	Alumni Center
30	Alumni Council Executive Meeting	7	Alumni Center
30	Alumni Council Meeting	32	Alumni Center

30	Sigma Chi Class of 1990 Reunion	10	Alumni Center
30	Black Alumni Society Meeting	14	Alumni Center
30	Women's Tennis Reunion	10	Campus
30	Legacy Scholarship Luncheon	98	Alumni Center
30	Athletic Trainer Reception	26	Alumni Center
OCT	Event	Attendance	Venue/City
1	Homecoming Steering Committee Meeting	17	Alumni Center
2	Homecoming Royalty Tea	40	Student Center
3	Nursing Alumni Board Meeting	13	Alumni Center
4	College of Business Alumni Planning Committee Meeting	10	Alumni Center
5	Homecoming Royalty Dinner/Interviews	50	Assembly Hall
5	IN Correctional Association's Annual Conference at the Sheraton Hotel	43	Indianapolis
6	Family and Consumer Science's Career Mentoring Day Meeting	7	Alumni Center
6	College of Fine Arts Alumni Board Meeting	12	Alumni Center
7	Teachers College Alumni Board Meeting	13	Teachers College/Arena
8	Homecoming Steering Committee Meeting	17	Alumni Center
8	Homecoming Open Mic Night at MT Cup	23	Muncie
9	Homecoming Opening Day Activities: Residence Hall Dinner; Twister; Obstacle Course; Pep Rally; World Record Attempt	300	LaFollette Field
10	Homecoming Faculty/Staff Wine and Cheese Reception	109	Alumni Center
10	Homecoming Air Jam	2101	Emens
11	Homecoming Spirit Event: Karaoke; Tug-of-War; Pie-Eating; Sumo Wrestling	247	Irving Gym
11	CART at Ballston Commons College Fair	1/17	Arlington VA
12	Homecoming Faculty/Staff Breakfast Reception	108	Student Center
12	Homecoming Student Scholarship Talent Search - Royalty Coronation	692	Emens Auditorium
13	Homecoming Bed Race		Campus
13	Homecoming Awards Dinner	197	Alumni Center
14	Homecoming All-Alumni Coffee Hour	55	Student Center
14	Homecoming Parade	142 units	Muncie
14	Homecoming Pre-Game Buffet Luncheon	583	Alumni Center
	Black Alumni Society	4	
	College of Business Alumni	17	
	College of Fine Arts Alumni	13	
	Family and Consumer Sciences Alumni	4	
	Journalism Alumni	22	
	SCGB/UPB Alumni	1	
	Sigma Tau Gamma Alumni	24	

	Theta Chi Alumni	10	
	Class of 1960	19	
	Class of 1980 Alumni and Friends	12	
	Sigma Phi Epsilon Alumni	45	
14	Homecoming (BSU vs Eastern Michigan)	17,898	Campus
14	Homecoming Post Game Celebration	342	Alumni Center
16	Homecoming Ashley Award Reception	89	Student Center
17	St.A.R.T. Meeting	12	Alumni Center
19	Washington Area Alumni Outing	45	Washington D.C.
19	Indianapolis Alumni Club Board Meeting	11	Indianapolis
20	Buffalo Football Send-Off	26	Alumni Center
21	Black Alumni Awards Committee Meeting	3	Alumni Center
24	Half Century Club Revisit	36	Alumni Center
27	Family and Consumer Sciences Career Mentoring Day	312	Alumni Center
27	Family and Consumer Sciences Alumni Board Meeting	12	Alumni Center
27	Central Michigan Football Send-Off	20	Alumni Center
	NOV Event	Attendance	Venue/City
1	College of Fine Arts Alumni Board Meeting	10	Alumni Center
4	Freshmen Legacy/Parent Luncheon	115	Alumni Center
4	Michiana Shopping Trip at Woodfield Mall	28	Chicago IL
6	Michiana Alumni Board Meeting	12	Elkhart
8	NREM Student/Alumni Career Day	9/40/3	West Quad
8	NREM Alumni Awards Committee Meeting	5	West Quad
10	Toledo Football Send-Off	29	Alumni Center
11	CART - Alumni Admissions Reception	9/26/32	Schaumburg IL
16	Class of 1951 Social Committee Meeting	10	Alumni Center
19	CART - Alumni Admissions Reception	11/254	Indianapolis
19	Homecoming Wrap Up Meeting	16	Muncie
20	Indiana Association of High School Principals Reception at Westin Hotel	331	Indianapolis
27	Family and Consumer Sciences Historical Committee Meeting	7	Alumni Center
28	St.A.R.T. Meeting	15	Alumni Center
29	Northeastern Indiana Alumni Club Meeting	11	Fort Wayne
30	Indiana Association of High School Superintendents Reception	113	Indianapolis
	DEC Event	Attendance	Venue/City
1	Blaine Brownell Inauguration	2500	Campus
2	Black Alumni Society Meeting	15	Alumni Center
2	Black Alumni Awards Committee Meeting	4	Alumni Center
5	Nursing Alumni Board Meeting	14	Alumni Center

7	College of Fine Arts Art Walk Committee Meeting	3	Indianapolis
9	St.A.R.T. Holiday Dinner	7	Muncie
11	Chicago Area Alumni Event at the Rock Bottom Brewery	42	Chicago IL
16	Nursing Pinning Ceremony	176	Pruis Hall
17	Commencement	998	Campus

2001

<i>JAN</i>	<i>Event</i>	<i>Attendance</i>	<i>Venue/City</i>
6	Eastern MI vs BSU Watch Party	61	Alumni Center
9	St.A.R.T. Meeting	16	Alumni Center
9	Nursing Alumni Board Meeting	7	Alumni Center
9	NREM Alumni Awards Committee Meeting	5	Indianapolis
12	College of Fine Arts Alumni Reception at the Westin Hotel	153	Indianapolis
13	Alumni Council Meeting	30	Alumni Center
14	Chicago Area Alumni Outing - Chicago Blackhawks Hockey	39	Chicago IL
14	An Afternoon With President Blaine Brownell	49	Fort Myers FL
15	An Evening With President Blaine Brownell	40	Sarasota FL
15	College of Business Alumni Board Meeting	19	Alumni Center
15	College of Business Sports and Spaghetti Night	43	Alumni Center/Arena
16	An Evening With President Blaine Brownell	27	Tampa FL
17	An Evening With President Blaine Brownell	42	Orlando FL
20	BGSU vs BSU Watch Party at The Fox and The Hound	44	Indianapolis
20	Journalism Alumni Board Meeting	13	Alumni Center
22	Family and Consumer Sciences Alumni Board Meeting	13	Alumni Center
23	St.A.R.T. Meeting	16	Alumni Center
24	College of Architecture and Planning Alumni Board Meeting	15	Alumni Center
25	Class of 51 Social Committee Meeting	11	Alumni Center
<i>FEB</i>	<i>Event</i>	<i>Attendance</i>	<i>Venue/City</i>
3	Indianapolis Casino Night	86	Indianapolis
3	CART Van Trip	122	Alumni Center
3	St.A.R.T. Elkhart Kids	41	Alumni Center
6	St.A.R.T. Tour	36	Alumni Center
6	College of Fine Arts Alumni Board Meeting	13	Alumni Center
7	Central Michigan vs BSU Watch Party	208	Alumni Center

10	BSU at the Indianapolis Ice at the Pepsi Coliseum	97	Indianapolis
11	BSU vs Miami Watch Parties		
	Willie's Sports Café	8	West Chester OH
	Stevie Tomato's Sportspage	18	Fort Meyers FL
	Champs Sports Bar	2	Novi MI
	Justin's	24	Chicago IL
	Mister Day's	20	Arlington VA
	Brent Kirk's home	7	Portland OR
	BW3's	25	Columbus OH
	Sunnyside Club	17	Kenosha WI
	Hooters	12	Tampa FL
	Gordon Bierch Brewery	4	Miami FL
	The Sports Page	40	Granger IN
	Tiffany's Billiards	2	Raleigh NC
20	St.A.R.T. Meeting	7	Alumni Center
21	NREM Student/Alumni Internship Day	60/28	Alumni Center
21	NREM Alumni Board Meeting	14	Alumni Center
22-23	St.A.R.T. Interviews	11	Alumni Center
23	Northeastern Indiana TGIF at Columbia Street West	107	Fort Wayne
24	St.A.R.T. Elkhart Kids	28	Alumni Center

MARCH Event

		Attendance	Venue/City
1	Reception with President Brownell	77	Dallas TX
2	College of Business Alumni Board Meeting	18	Alumni Center
3	Black Alumni Society Meeting	15	Alumni Center
6	MAC Basketball Tournament - Women's Pre-game Outing	77	Cleveland OH
8	MAC Basketball Tournament - Men's Pre-game Outing	163	Cleveland OH
9	MAC Basketball Tournament - Men's Pre-game Outing	170	Cleveland OH
12	Michiana Alumni Board Meeting	12	Elkhart
12	St.A.R.T. Tour and Meeting	28	Alumni Center
13	Nursing Alumni Board Meeting	7	Alumni Center
14	Homecoming Steering Committee Meeting	14	Alumni Center
15	Adams-Well Alumni Club Meeting	5	Bluffton
17	Tennis Lettermen's Reunion	61	Worthen Arena/Alumni Center
19	College of Fine Arts Indianapolis Arts Walk Committee Meeting	2	Alumni Center
19	Family and Consumer Science Awards Selection Committee Meeting	5	Alumni Center
21	Cardinal Job Fair	34/1500/128	Worthen Arena
22	Indianapolis Alumni Club Board Meeting	14	Indianapolis

23	Insurance and Actuarial Science Dinner	36	Alumni Center
23	Homecoming Steering Committee Meeting	14	Alumni Center
25	CART Alumni/Admissions Reception	4/127	Indianapolis
27	St.A.R.T. Meeting and New Member Bowling	9	Alumni Center/Student Center
28	Neil Palomba Recognition Dinner Planning Committee Meeting	6	Alumni Center
28-29	Senior Salute	500	Student Center
30	Homecoming Steering Committee Meeting	13	Alumni Center
	APRIL Event	Attendance	Venue/City
3	St.A.R.T. Meeting	29	Alumni Center
3	Homecoming Steering Committee Meeting	15	Alumni Center
5	Journalism Alumni Board Meeting	13	Alumni Center
5	Journalism Awards Luncheon	125	Student Center
5	Adams-Wells Alumni Meeting	7	Decatur
7	College of Architecture and Planning Alumni Board Meeting	17	Campus
7	College of Architecture and Planning Alumni Day	157	Campus
10	Homecoming Steering Committee Meeting	17	Alumni Center
10	St.A.R.T. Meeting	16	Alumni Center
12	Class of 1951 Social Committee Meeting	17	Alumni Center
12	Graduate Student Reception - BSUAA Outstanding Dissertation Award	180	Student Center
17	Nursing Alumni Board Meeting	10	Alumni Center
17	Distinguished Alumni Award Committee Meeting	5	Alumni Center
17	Homecoming Steering Committee Meeting	17	Alumni Center
17	St.A.R.T. Meeting	26	Alumni Center
18	College of Fine Arts Jazz and Java	74	Alumni Center
18	Journalism Alumni Outing	68	Indianapolis
18	Northeastern Indiana Alumni Club Meeting	15	Fort Wayne
18	Homecoming Royalty Meeting	78	Teachers College
19	CART Alumni/Admissions Reception	3/25	Cincinnati OH
20	English Alumni Reunion/Dr. Rippey Lecture	133	Alumni Center
21	Michiana Casino Night	62	Elkhart
22	CART Alumni/Admissions Reception	4/102	Fort Wayne
24	Homecoming Steering Committee Meeting	13	Alumni Center
24	St.A.R.T. Meeting	19	Alumni Center
24	College of Fine Arts Alumni Board Meeting	6	Alumni Center
25	Alumni Association Legacy Scholarship Committee Meeting	7	Alumni Center
25	Homecoming Royalty Photos	80	Alumni Center
26	NREM Awards Dinner	58	Alumni Center

28	Nursing Alumni Banquet	148	Alumni Center
28	Family and Consumer Sciences Spring Alumni Day	44	Alumni Center
MAY Event		Attendance	Venue/City
2	Homecoming Steering Committee Meeting	13	Muncie
2-3	Teacher Fair	61/204/453	Worthen Arena
4	St.A.R.T. Senior Congrats Party	561	Alumni Center
4	Nursing Pinning Ceremony	484	Pruis Hall
5	Commencement	2100	Campus
7	Michiana Alumni Club Meeting	10	Elkhart
18	College of Business Recognition Dinner for Neil Polumba	83	Alumni Center
19	Black Alumni Society Meeting	9	Alumni Center
JUNE Event		Attendance	Venue/City
6	Adams-Wells Alumni Club Meeting	8	Bluffton
8	Paul Parkison's Retirement Reception at the Ritz Charles	77	Carmel
11	Family and Consumer Sciences Alumni Board Meeting	13	Alumni Center
12	NREM Alumni Board Meeting	11	Alumni Center
12	Teachers College Alumni Board Meeting	14	Alumni Center
13	Accounting Alumni CPE Outing at Lutz's Restaurant	26	Noblesville
13	Indianapolis Golf and Dinner Outing at Pebble Brook Golf Club	86	Noblesville
15	Alumni Football Lettermen Golf Outing at Hickory Hills Golf Club	102	Farmland
16	Alumni College	102	Campus
16	Alumni Council Meeting	30	Alumni Center
16	Distinguished Alumni Award Meeting	7	Alumni Center
16	Journalism Alumni Board Meeting	10	Alumni Center
16	Linson Scholarship Meeting	4	Alumni Center
16	Symphony on the Green	101	Campus
18	Michiana Golf and Dinner Outing at Christiana Creek Country Club	77/80	Elkhart
20	Gamma Gamma Reunion	49	Alumni Center
20	Northeastern Indiana Golf and Dinner Outing at Autumn Ridge Golf Club	109	Fort Wayne
20	Class of 1951 Golf Outing at Player's Club Golf Course	7	Yorktown
21-22	Class of 1951 Reunion	141	Alumni Center
28	Adams Wells Golf and Dinner Outing at Grey Goose Golf Club	74	Decatur
30	Black Alumni Society Meeting	15	Alumni Center

Ball State University Alumni Association
Muncie, IN 47306-0075
Telephone: 765-285-1080
Toll Free: 1-888-I-GO-4-BSU
E-mail: alumni1@bsu.edu.

Copyright © 2002 [Ball State University]. All rights reserved.
Revised: 08 Jul 2003 10:32:31 -0500 .

Comments to the [Webmaster](#).



[Annual Report](#)

[Alumni Staff](#)

[Alumni Leadership](#)

[Alumni Ambassadors](#)

[Alumni Contacts](#)

[Alumni Awards](#)

[Professional and Constituent Societies](#)

[Reunions](#)

[Alumni Programs](#)

[Past Activities Calendar](#)

[Financial Summary](#)

BSUAA 2000-2001 ANNUAL report

Alumni Association financial

Revenue 2000-2001

Alumni Association (net)	\$ 260,000.00
Ball State University Foundation	265,000.00
University Advancement	60,000.00
University Allocation to Alumni Programs	917,196.37*
Current Assets (utilized 2000-2001)	6,321.32
Total Revenue	\$1,508,517.69

Expenditures 2000-2001

Administrative Salaries	\$ 399,902.00
Classified Salaries	118,706.00
Fringe Benefits	134,208.37
Student/Graduate Assistant Salaries	28,800.00
Ball State Alumnus (printing/postage)	320,317.46
Non-Alumnus Postage	57,521.38
Other Publications (printing)	63,105.54
General Operations	147,968.57
Other University Departmental Support	15,207.58
Travel	10,000.00
UBI Taxes	1,600.00
Alumni Clubs/Regional Alumni Outings	55,450.10
Awards Program	2,435.18
CART	7,905.80
Constituent Programs	7,629.80
Homecoming	24,098.86
Reunions	8,680.63
New Graduate Promotions	6,931.80
Scholarships	87,510.47
Student Programs	10,538.15
Total Expenditures	\$1,508,517.69

Current Assets (June 30, 2001)	\$ 138,807.02
Endowed Scholarships (June 30, 2001)	168,249.77
Investment Assets (June 30, 2001)	1,037,262.47
Total Assets (June 30, 2001)	\$1,344,319.26

- The university provides office space (rent, utilities, maintenance) and computer services in addition to the revenue shown.

Ball State University Alumni Association
Muncie, IN 47306-0075
Telephone: 765-285-1080
Toll Free: 1-888-I-GO-4-BSU
E-mail: alumni1@bsu.edu.

Copyright © 2002 [Ball State University]. All rights reserved.
Revised: 08 Jul 2003 10:31:53 -0500 .

Comments to the [Webmaster](#).

