



**SPECIAL POINTS OF INTEREST:**

- Recent Publications and Presentations (p. 12)
- Important information for Graduating Master's Students (p. 14)
- Upcoming Conferences, and Workshops (p. 15)

**INSIDE THIS ISSUE:**

- Dr. Gerstein's Achievements 2
- Student Interviews 3
- Alumni News 4
- News from the Comm. and M.H. Program 7
- Interview with Dr. Kim 8
- Interview with Dr. Tschopp 9
- News from the School Program 10
- News from the Rehabilitation Program 11

## Letter from the Chair

We are experiencing a typical Indiana fall: warm one week, then a frost, then a warm couple of days, followed by hat-and-glove wearing weather. Who knows how to dress for this sort of thing! Okay, I have to say it: change is definitely in the air.



CPSY has a lot of events going on this year, as usual. First, we welcome our newest colleague, Dr. Jeong Han Kim, hailing from South Korea via the great state of Wisconsin. Yes, the home of very fine cheese curds, the Green Bay Packers, and some of the finest rehabilitation psychology instructors in the country sends us another of its best and brightest! How can we be so lucky?!!!! Han is a great addition to the faculty, and we certainly hope to have him here for many years to come. We may have to encourage him to organize a trip for students to Korea sometime in the future!

On the other side of that coin, we also say goodbye to Dr. Molly Tschopp, who is leaving Muncie in January for the wonders of seafood, seagulls, and see-worthy sights in good old Boston, Massachusetts. We truly hate to see her go, but her destiny awaits her in the East. Through her leadership we continue to have a high profile in the state rehabilitation association, and we are attracting more and more students. She will be sorely missed; when you see her, please be sure to wish her the best of luck in her new position.

Of course, Dr. Tschopp's departure means the department is doing another faculty search. The college is searching for a Dean at the same time. The Indiana Rehabilitation Association conference, including the first Hofherr Memorial presentation, is this fall. And, CPSY is hosting the 2009 Great Lakes Conference in March. Oh, no, we aren't very busy at all.

I recently attended the fall Indiana Psychological Association conference. Dr. Kruczek, five doctoral students (one on internship), and one social psychology masters student also attended. Emeriti faculty member Bob Hayes gave a day-long workshop. Although it was a very small conference, CPSY was well-represented. One of the keynote presentations gave me pause to reflect. Dr. David Ballard from the APA Practice Directorate discussed the psychologically healthy workplace. He described best practices that were (or should have been) informed by counseling, social and industrial/organizational psychology. He addressed ways to create and maintain a healthy workplace, including both worker and employer responsibilities. One of the points he made was really striking: employees appreciate both informal and formal recognition of their hard work and efforts, and when they (we) receive those accolades it can really boost the morale of the unit. We are quick to identify the negative, but we need to pass on the positive comments, too. Take a look at the Directorate's web page for more info: <http://www.APApractice.org>. I am going to take this opportunity to show appreciation to our students, staff, and faculty for all the work they do every day.

## Breaking News!

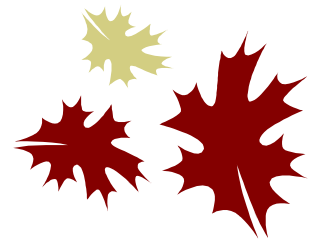
Heard at the Indiana Psychological Association conference: social psychology student Jenny Olson received second place for her research poster presentation. Theresa Kruczek was elected Science and Academics Chair, and Sharon Bowman was awarded the Gordon A. Barrows Distinguished Psychologist Award this year, which is IPA's highest award. It is given to a psychologist who has made distinguished contributions to psychology over a considerable period of time.

Heard at the Indiana School Counselors Association conference: Charlene Alexander received the 2008 Exemplary School Counselor Educator Award! The winner of the state award is automatically in contention for the national award from ASCA.

Congratulations to all!

## Social Justice League

This fall, a group of students from the department formed the Social Justice League (SJL), a student organization that is headed for great things. SJL promotes the "distribution of advantages to be fair and equitable to all, regardless of race, gender, ability status, sexual orientation, physical makeup, or religious creed" (Fouad, Gerstein, & Toporek, 2006, p. 1). To that end, SJL will work to change structures that perpetuate unfair practices, combat discrimination, and protect the environment and human rights everywhere. SJL is currently working on several projects, including a needs assessment of the Ball State University community, a campaign to make older adults aware of community resources, community outreach opportunities for the Great Lakes 2009 Conference, and a program evaluation of the poverty simulation that is conducted on campus during the Week of Action. Students who are interested in SJL can contact Gunnar Ingolfsson ([goingolfsson@bsu.edu](mailto:goingolfsson@bsu.edu)) or Laura Walker ([lrwalker@bsu.edu](mailto:lrwalker@bsu.edu)).



## Interview with Dr. Gerstein: Researcher of the Year

This year, Ball State University recognized Dr. Gerstein with the Outstanding Research Award.

### What does this award mean to you?

This award is a result of collaborative work that I have done with students and colleagues. Most of my publications have been co-authored with students and other faculty members. The award is a reflection of the quality of the students and faculty at Ball State.

### What are your research interests?

In the past, I have studied loneliness and Employee Assistance Programs. Currently, I am interested in cross-cultural issues, peace and conflict, and social justice.

### In terms of research, have Ball State and the Department of Counseling Psychology and Guidance Services changed since you joined the faculty?

When I arrived at Ball State in 1983, it was mainly a teaching and service institution, but they had set a goal to become a research institution. In addition, the department, which was also practice-oriented, wanted to begin integrating research and practice. I was one of three research-focused professors who were hired that year. In the beginning, there was some friction between practitioner-oriented faculty and those who did research, but now faculty members are much more collaborative. I think that our current program has a strong integrative model of practice and research.

### How has your research changed over the years?

My research interests have evolved to incorporate my personal interest in social justice. I used to have a bias toward quantitative methods; now I use both quantitative and qualitative methods, depending on what is the best fit for the research.



# Student Interviews

## Damita Miller (M.A., Counseling and Social Psychology)

**Where is your hometown?**

I count Jamaica, Bermuda, and Orlando, FL as my homes, although I've lived in Orlando the longest. I miss my palm trees and the diversity of Florida but love the fall leaves of the north (I could do without the cold, though).

**Where did you go for your bachelors degree?**

I earned my B.S. in Psychology and B.A. in Anthropology from the University of Florida.

**Why did you select this field of study?**

I chose Mental Health Counseling and Social Psychology because I love learning about the human mind and finding new ways to help others. I also love discovering how being a part of different societies and cultures influence the way we think and interact with one another and how we perceive ourselves.

**What do you think of your experiences at Ball State so far?**

Being so far from home, I'm a bit homesick. But I'm adjusting and making good friends here. I'm slowly learning how to get more involved with my classmates and just hang with them (something I didn't really do at my old school.)

**What have you liked about the program?**

The professors are very approachable and helpful. They really encourage students to use all available resources to help the students get what they need. I'm enjoying the hands-on learning I'm getting regarding counseling methods and techniques.

**What are your future plans and career goals?**

I plan to get my Ph.D. in Counseling Psychology outside of Indiana, to do the psychology professional triad (teaching, research, and

*"I'm enjoying the hands-on learning I'm getting regarding counseling methods and techniques."*

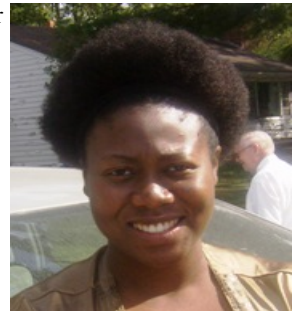
counseling), work with minority and immigrant populations, and buy a massage chair upon completion of my Ph.D. program.

**What are some of your favorite interests?**

I love learning about different cultures and their histories. I enjoy writing poetry, prose, short stories, and plays. I love singing, and I am part of a praise team at a local church. And I'm addicted to reality shows like Bridezilla, Jon and Kate Plus 8, and What Not to Wear as well as watching BBC America shows like documentaries, How Clean Is Your House, etc.

**Which country in the world would you most like to visit?**

I would love to visit Spain, Ireland,



## Summer Ibarra (Ph.D., Counseling Psychology)

**Where is your hometown?**

I've lived in Greenwood, Indiana since I was 11 or 12. Prior to that, my dad was in the military and we moved around a lot. Our family still lives in Greenwood.

**You graduated from the department's rehabilitation counseling program. What made you decide to return for your Ph.D.?**

During my internship, I worked with neuropsychologists and realized that was what I wanted to do, and of course, you have to have a Ph.D. to work in neuropsychology. Prior to that, I just wanted to be a counselor working with people with disabilities.

**Why did you select neuropsychology?**

I think it's just been my experience in my internship. My internship site had both rehabilitation and neuropsychology departments and I actually contacted the wrong person, but it ended up being a good thing. Neuropsychology has a lot of variety compared to being in a work environment where you just see clients.

Neuropsychologists do counseling, but they also do many other things: inpatient work, consultation, testing, etc. I like the variety of it.

**What have your experiences been as a M.A. and Ph.D. student in our department?**

I had a very good experience as a master's student; that's why I came back! I had some very good relationships with faculty members and that was a big influence on my decision to return. The environment is very collaborative compared to other Ph.D. programs, which can be more competitive and exclusive.

**What else have you liked about the program?**

The master's program offered me a lot of practical experience. I like the way they encourage client contact from the very beginning. With the doctoral program, I like the emphasis on integrating research with practice.

**What are your future plans and career goals?**

After I get through the program, I would like to work in a hospital as a neuropsychologist in the field of brain injury rehabilitation.

**What are some of your favorite interests and activities?**

I love to watch sports, especially baseball and football. I also love art. I spend most of my time with my husband and my daughter, who just turned a year old in September.

**Which country in the world would you most like to visit?**

Australia, although I don't think I'd ever make the plane ride!

*"I like the emphasis on integrating research with practice."*



## Welcome to all the New Students!

The Department of Counseling Psychology and Guidance Services would like to welcome all of the new doctoral and master's students. The new doctoral students are:

Yves Ambroise  
Mona Ghosheh  
Tricia Groff  
Summer Ibarra

Kory Jordan  
Tae Sun Kim  
Gerald Novack  
Dustin Shepler  
Jillian Sullivan  
Aarika VanNatter

There were also 37 new master's students who started the program this fall. The Community Track welcomed 8 students, the Mental Health Track had 7 students, 7 incoming students entered the School Track and the Rehabilitation Track had 7 students. The General Social Track welcomed 1 student and 1 student was admitted to the Applied Social Track. In addition, 6 students came in with a double major.

## Alumni and Student News

**Corby Bubb, M.A.** ('96) and **Ph.D.** ('04) and his wife, Jen, welcomed their third son, Caden, on June 9, 2008. Caden has two older brothers, Josh (4) and Brett (1).

**Seong-In Choi** (Ph.D. Candidate) has accepted a lecturer position at the University of Southern Mississippi, teaching both undergraduate and graduate classes.

**Rosalyn Davis, Ph.D.** ('06) was licensed in January 2008 as a psychologist in Arkansas.

**Gina Evans, M.A.** ('01) and **Ph.D.** ('06) is now on the faculty at Baylor College of Medicine as an Assistant Professor of Medicine-Chronic Disease.

**Toni Gesler, M.A.** ('01) and **Ph.D.** ('06) and Timothy Gesler are thrilled to announce the birth of their daughter, Maisie Irene, on Thursday, August 28, 2008.

**Steve S. Graunke, M.A.** ('04) and his wife, Carrie, welcomed their first son, Brett Steven Graunke, on April 14, 2008. Steve has also applied for admission into the Ph.D. program in Adult, Higher, and Community Education at Ball State University.

**Kevin Harris** (Ph.D. candidate) has been accepted for an APA-accredited post-doctoral position with his internship site, Citrus Health Network in Miami, Florida.

**Meghan Hastings Stotlar, M.A.** ('05) and her husband, Jim, had a son, Henry, on May 1, 2008.

**Michiko Iwasaki, Ph.D.** ('06) has accepted a 9-month lecture position at Webster University in St. Louis.

**Rebecca "Becky" Licht, M.A.** ('91), July 2, 1949 - May 17, 2008, passed away after a two-year battle with cancer. Rebecca was a mental health counselor most recently at the Briarwood Clinic in Muncie, Indiana. Beloved wife, mother and grandmother. She will be missed by her family, colleagues and clients.

**Sam Mauck, M.A.** ('05) has accepted a position at Lambuth University, a small liberal-arts university in West Tennessee. Sam is the Assistant Dean of Students and the Director of Career Development at the Career Development Center. Sam's responsibilities include all aspects of career development, including his favorite, career choice counseling for undecided students. Sam loves his job, which combines everything he loves about counseling and student affairs into one meaningful ball of joy and sunshine.



Baby Henry

## Alumni and Student News continued

**Dennis Morrison, Ph.D.** ('85) has accepted a position as the CEO of the Centerstone Research Institute, which is now the largest provider of community-based behavioral health care in the country. Centerstone plans to change the way health care is delivered in the United States by shortening the 17-year science to service gap.

**Melanie Pescan, M.A.** ('93) passed away September 28, 2008 after a long fight with cancer. A memorial service was held Saturday, October 4 at the Unitarian Universalist Church of Akron, 3300 Morewood Road, Akron, OH 44333.

**Clare Rountree, Ph.D.** ('05) has been recognized by the National Register with the Judy E. Hall, Ph.D. Early Career Psychologist Award.

**Erin Snyder** (Ph.D. candidate) is joining the counseling center staff at Texas Tech. She will create a sexual assault response team and will also be in charge of outreach.

**Adam Zagelbaum, Ph.D.** (class of '05), received the Excellence in Teaching award for a second time from Governors State University, where he was a member of the school counseling faculty. Adam has begun a new position teaching in the school counseling program at Sonoma State University in Sonoma California.

## News from the Front Office

Emily Hammersmith, undergraduate assistant, will be leaving us after two and a half years of exemplary service. Emily will be completing her degree in nursing this fall and has already accepted a position on the cardiac telemetry unit at Ball Memorial Hospital. Emily has enjoyed working in the department and would like to thank everyone for making her time here a pleasure. We will miss Emily too!

## Congratulations, Dr. Tschopp!

On behalf of proud parents Molly and Phil and big brother Theo, we are pleased to announce the arrival of Zela Maxine Tschopp. She was born at 12:55 p.m. on Tuesday, July 1. Congratulations to the happy family!



## CONGRATULATIONS!

Cody Cramer, Mental Health M.A. student, married Alexis Steury on May 31.

On August 8, Community M.A. student, Björg Hermannsdottir, and Gunnar Ingolfsson, also a Community M.A. student, got married in Iceland.

Shannon Borbely, Community M.A. student, married Ryan Christy on October 4.

On August 2, Nikki Baugher, Ph.D. student, and Jake Jones were married.

*We wish all four couples a lifetime of happiness.*

## At A Glance

Tuesday, November 25	Classes meet according to a Friday time configuration.
Wednesday, November 26 – Saturday, November 29	Thanksgiving break – no classes
Monday, December 1	Classes resume
Friday, December 12	Last meeting day for regular classes
Saturday, December 13	Final examination day for Saturday classes
<b>Monday, December 15 – Friday, December 19</b>	<b>Final exams</b>
Friday, December 19	Fall semester ends
<b>Saturday, December 20</b>	<b>December Commencement (graduation) at 10 a.m.</b>
Sunday, December 21 – January 11, 2009	Semester Break
Monday, December 22	Grades due at noon
<b>Monday, January 12</b>	<b>University classes begin</b>
Friday, January 16	Late registration and change-of-course ends
Monday, January 19	Martin Luther King, Jr. Day - no classes
Sunday, March 8 – Sunday, March 15	Spring break - no classes
Monday, March 16	Classes resume
Monday, March 23	Course withdrawal period ends. Instructor's permission is not required.
Friday, May 1	Last meeting day for regular classes
Saturday, May 2	Final examination period for Saturday classes
<b>Monday, May 4 – Friday, May 8</b>	<b>Final exams</b>
Friday, May 8	Spring semester ends
<b>Saturday, May 9</b>	<b>May Commencement (graduation)</b>
Monday, May 11	Grades due at noon

## Job Opportunities

**Adult & Child** in Greenwood, IN is seeking a master's level counselor who has an interest in working with a home-based ACT team as an Addictions Specialist. If you are interested in addictions work in a treatment team setting (and clients with severe mental illness), please contact Kay Webb (kaywebb@iupui.edu) for more information.

# News from the Community and Mental Health Counseling Program

## Welcome New Students!

I would like to take this opportunity to personally welcome all of the incoming Community and Mental Health track students. We had an impressive pool of applicants for Fall 2008 admission and those of you who were selected are the cream of the crop! We are delighted to have you here and I look forward to working with all of you.

## Master's Program Assistants

Among our new students is Laura Walker, who we are happy to have on board as a master's program assistant. Of course we are also very happy to have Björg Hermannsdottir, who is in her second year as a program assistant and is doing a terrific job! Thanks to both of you for all that you do to help with the program.

## Content Exam

The content exam was administered on October 22<sup>nd</sup> this semester. The next administration will be during the spring semester. This is just a reminder that students in the Community and Mental Health tracks must pass the exam before graduation. You may take the exam once you have completed at least 30 semester hours of coursework.

## Conferences

The Indiana Psychological Association Conference was held in Indianapolis on November 7-8, 2008. For more information, see their website: <http://www.indianapsychology.org/>

It is not too late to submit proposals for presentations for the American Counseling Association Conference:

The American Counseling Association (ACA) Annual Convention will be in Charlotte, North Carolina March 19-23, 2009. For conference information, the weblink is: <http://www.counseling.org/convention/>. Also, you may wish to visit the ACA website: [www.counseling.org/students](http://www.counseling.org/students) to access helpful information for counseling students or to become a member of ACA.

The 2009 Great Lakes Division 17 Regional Counseling Psychology Conference is scheduled for March 27-28, 2009 (Friday and Saturday) and will be hosted at Ball State University.

## Graduates

I always enjoy hearing from our graduates. I ran into Anna Tallant a few months ago in Indianapolis. She is licensed and has a successful private practice. I also heard from Melissa (Kirkwood) Lapinski who is licensed and working as a Care Manager for Compcare and says that she is really enjoying her work.

Please email me at [kperrone@bsu.edu](mailto:kperrone@bsu.edu) to let me know how you are doing in your careers and lives. Thanks for keeping in touch and best wishes,

Dr. Kristin Perrone

# Interview with Dr. Jeong Han Kim

## What is your home country?

South Korea.

## What brings you to our department and to Ball State University?

Ball State has an interesting philosophy that combines research and more practical training for students. Counseling psychology is not really a part of the foundation of psychology; it has been more practical studies, so it is important that students have knowledge and practical experience. I felt that the program at Ball State supports that philosophy. Most programs will say that they offer both, but the evidence is in how they organize their course content. Ball State has several different tracks, the course content is very organized, and students have a better chance to develop their own career paths. Other well-known universities just provide one program without much chance for students to have specialties.



## What is your educational background?

I studied psychology as an undergraduate. Then I went into military service and returned to graduate school in social work. I spent two years in South Korea in social work and then moved to rehabilitation counseling, but rehabilitation programs in South Korea have a narrow focus on vocational rehabilitation. I felt that I wanted to study rehabilitation counseling rather than vocational rehabilitation, so I came to the United States to get my M.A. and Ph.D. in rehabilitation psychology, both at the University of Wisconsin-Madison.

## Why did you select the field of rehabilitation?

I never thought I wanted to be a teacher; I was a musician. During my military service I had to work in an area with unexploded mines and became disabled. It was a really severe

injury, but I had a great doctor who recommended that I was still young, so it would be better to try rehabilitation, even if it took a long time. I had a period of medical rehabilitation and I lost the one thing I could do—music. I thought that my brain was still working, so I might as well try to study again. I started with social work. It was very interesting, but most people in social work are going to become practitioners, not teachers. I met one well-known professor in rehabilitation counseling who also had a disability, and he recommended that I should study rehabilitation counseling.

## What are your research and teaching interests?

My major research interest is virtues and character strengths. In relation to that, I also study social justice, multicultural issues and international communications to help other countries in the pedagogical aspects of rehabilitation counseling. With teaching, I'm more interested in the pedagogical aspects as well. I think that classes should be likeable. No matter what kind of structure teachers use, that is really important. I think it is important for instructors to provide opportunities for personal maturation throughout a program. A good education provides opportunities for students to become personally and professionally mature in addition to having better knowledge.

*"I think it is important for instructors to provide opportunities for personal maturation throughout a program."*

## Are you involved in any professional organizations?

I am involved in APA Division 22 (Rehabilitation Psychology), Division 17 (Counseling Psychology), and the National Rehabilitation Association.

## Do you have any special skills or hobbies?

I like to sing and I can play the guitar a bit. I used to play heavy metal music; singing was my personal identity. When I first started school, I thought that studying was boring and music was more creative. Then I realized that academics can be creative too. I can have a personal concert every day with students in my class.



# Interview with Dr. Molly Tschopp

## Why did you decide to become a professor at Ball State?

The BSU CPSY department stood out given the diverse and accomplished faculty, the focus on student development, support for my research interests, and the commitment from administration to grow the rehabilitation program. Drs. Phyllis Gordon and Perrone hosted much of my interview visit. I was impressed with them personally and professionally and felt very welcome. They later became wonderful mentors and friends.

*“The department holds true to their commitment to student development and celebrating diversity.”*

**What do you like best about the department?**  
The department holds true to their commitment to student development and celebrating diversity. I also feel like it is a department that values faculty and students in all of their life roles. Dr. Bowman has been a leader in establishing a supportive, collaborative culture.

## What led you to the field of rehabilitation?

Early personal experiences, in particular having eleven adopted cousins with various disabilities. Professionally, I have always had an interest in underserved and oppressed populations. I was attracted to rehabilitation’s holistic philosophy of care, the importance of mind and body in improving overall quality of life, respect and dignity for all regardless of ability level, and the goal of empowerment.

## What were some of your best experiences during your time here?

Each year I enjoy working with the incoming student cohort in Introduction to Rehabilitation Counseling as they begin their graduate careers and explore all that the field of rehabilitation has to offer. It is also especially gratifying to work with

those same students during their internships. I have the opportunity to witness how they have developed as counselors-in-training from beginning to end.

## What are your plans for the future?

I have accepted a position at the University of Massachusetts-Boston beginning in January 2009. While it will be hard to leave CPSY, this is a wonderful opportunity for me professionally and personally for my family. I will direct the UMass traditional and distance education graduate rehabilitation counseling programs. Rehabilitation faculty and administrators at UMass and rehabilitation resources in Boston offer me important research opportunities. For example, UMass-Boston houses the Institute for Community Inclusion (ICI) which “promotes the inclusion of people with disabilities through training, consultation, clinical and employment services, and research. ICI is also involved in special projects focused on ensuring personal choice, self-determination, and social and economic justice for people with disabilities.” Boston has been a center for psychiatric rehabilitation research in particular so I am excited about accessing those specialized research opportunities.

## Do you have any advice for students in the rehabilitation program or in the department in general?

Due to many factors, including disability legislation, advances in medical technology, and veterans returning from war, career opportunities in rehabilitation continue to grow. I hope that the rehabilitation counseling students will remember the critical role of advocacy: not only on behalf of individual consumers with disabilities, but also in promoting disability awareness, systemic change, and the specialized field of rehabilitation.

I would like to thank the faculty and students and wish you all well in your future pursuits.

## News from the School Counseling Program, by Dr. Alexander

### ISCA Fall Conference

Once again we had several school counseling students attend the ISCA fall conference. Our keynote speaker at the conference was Dr. Michele Borba. Dr. Borba is a frequent consultant on the "Today Show" and has written several books on parenting, achievement and character development. A special thank you to Leah Hooper who again contributed in a significant way to the success of this year's conference.

### School Counselor Advocacy

The ASCA National Model incorporates both Leadership and Advocacy as central themes, these can however be very challenging concepts to teach. In an attempt to bring these themes to life, the school counseling internship class attended a meeting of the Interim Committee on Education Matters at the State House on October 1, 2008. At that meeting, school counseling student Leah Hooper and I, along with other representatives from the Indiana School Counselor Association (ISCA), had an incredible opportunity to address the Committee on the topic of College Readiness and the role of professional school counselors. As a result of our testimony, our state representatives and senators now have a better understanding of school counselor training, the effectiveness of school counselors in the state, challenges facing school counselors at the elementary level and the hopes of school counselors entering the school counselor profession. I am very pleased to announce that the committee voted to accept the findings and recommendations I presented, and we will see legislation introduced in the fall related to these recommendations.

### Transforming School Counseling: Ed Trust Initiative

The school counseling program has started meeting with an advisory group at Highland High School in Anderson. This advisory group consists of current and past students, school counselors, community members, faculty, parents and administrators.

The goals of this advisory group are to help us address programmatic changes to the program and address gaps in achievement at Highland High School.

### St. Lucia

Once again I will be taking a class to St. Lucia to continue our peer mediation program, "Help Increase the Peace Program (HIPP-I)." Students from the masters program in Counseling as well as high school seniors from Burriss Laboratory school will travel to St. Lucia for 3 weeks and introduce the program in four new secondary schools on the island. Last summer our students were able to raise funds to help four students from St. Lucia visit our department and beautiful campus. If you would like to contribute to this endeavor, please let us know. We look forward to your support.

Dr. Charlene Alexander



Students in St. Lucia, Spring 2008.

# News from the Rehabilitation Counseling Program

## Welcome to Dr. Jeong Han Kim!

This fall Dr. Jeong Han Kim has joined the department as a new tenure track faculty. He is a graduate of the University of Wisconsin-Madison Rehabilitation Psychology doctoral program. He will be teaching rehabilitation specialty and general counseling courses. We are pleased to have him here.

## A Message from the Indiana Rehabilitation Association Student Chapter

Are you interested in disability and health issues and advocating for individuals with disabilities? If so, consider joining the student chapter of the Indiana Rehabilitation Association! Possible activities for the student chapter include: fundraising events, disability awareness on campus, networking with leaders in the community, and developing or assisting local organizations with disability issues. Any involvement in the student chapter would be greatly appreciated and welcomed. Those interested in becoming members of the Indiana Rehabilitation Association (IRA) Student Chapter must join the National Rehabilitation Association (NRA). A limited number of IRA sponsored NRA student memberships are available. This will be a great opportunity for counseling students to meet professionals in the community, build your resume, and learn more about disability and health issues. For more information, please contact IRA Student Chapter President Brittany Madison at [bmmadison@bsu.edu](mailto:bmmadison@bsu.edu).

## Indiana Rehabilitation Association Annual Conference

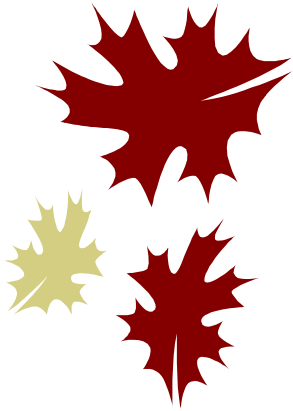
The Indiana Rehabilitation Association Annual Conference will be held at the BSU Alumni Center on December 2. The Indiana Rehabilitation Association is a chapter of the National Rehabilitation Association. The NRA is a member organization whose mission is to promote excellent practice in rehabilitation. The NRA's vision statement is to be the premier organization of diverse professionals committed to the empowerment of all people with disabilities.

The event will open with poster presentations by rehabilitation counseling graduate students featuring research on diverse disability topics. BSU Rehabilitation Counseling students will be participating and students from other tracks are also welcome to present posters on issues relevant to the conference. Please contact Dr. Tschopp if you would like to learn more about presenting at IRA. Following the poster session Dr. Jeong Han Kim will present on virtue and character strengths, coping and quality of life for people with chronic illness and disability. Dr. Kim is a graduate of the University of Wisconsin- Madison Rehabilitation Psychology doctoral program and new faculty member at Ball State University. Lunch will feature a leadership panel discussing careers and current issues in major sectors of rehabilitation practice.

The afternoon will feature the Cheryl Hofherr Memorial keynote speaker. Our friend and colleague, Cheryl Hofherr, passed away last year and in her honor a memorial fund was established through Ball State University's Department of Counseling Psychology and Guidance Services. For over 32 years Cheryl touched the lives of many people with disabilities and their families through her work in the field of rehabilitation. We would like to recognize and remember her dedication to serving individuals with disabilities and her commitment to the development of future rehabilitation professionals. Cheryl was a shining example of the mission of removing barriers and building opportunities for full community integration of individuals with disabilities. Through her work she planted the seeds of hope for many people and helped their dreams become realities. The goal of this fund is to carry on her legacy of improving the lives of those with disabilities by educating professionals who will continue to do this important work. This year the Cheryl Hofherr Memorial Keynote speaker is Dr. Teresa Grossi, director of the Indiana University's Center on Community Living and Careers of the Indiana Institute on Disability and Community. Dr. Grossi will present on transition issues and implications for vocational rehabilitation counselors based on the changes in the new special education law (Article 7). We will close the day with an award ceremony. I look forward to seeing you all there as we honor rehabilitation colleagues, enhance our current knowledge, and promote the professional development of our field's future.

Dr. Molly Tschopp

## Recent Publications



Ægisdóttir, S., Gerstein, L. H., & Canel, D. (2008). Methodological issues in cross-cultural counseling research: Equivalence, bias and translations. *The Counseling Psychologist, 36*, 188-219.

Hanna, L. R., Avila, P. R., Meteer, J. D., Nicholas, D. R., & Kaminsky, L. A. (2008). The effects of a comprehensive exercise program on physical function, fatigue, and mood in patients with various types of cancer. *Oncology Nursing Forum, 35*, 461-470.

Heppner, P. P., Leong, F. T. L., & Gerstein, L. H. (2008). Counseling within a changing world: Meeting the psychological needs of societies and the world. In W.B. Walsh (Ed.), *Biennial Review of Counseling Psychology (1<sup>st</sup> Edition)* (pp. 231-258). NY: Taylor & Francis Book Group.

Kwan, K. K. & Gerstein, L. H. (2008). Envisioning a counseling psychology of the world: The mission of the International Forum. *The Counseling Psychologist, 36*, 182-187.

Perkins, D., Rains, J., Tschopp, M. K., & Warner, T. (in press). Gainful employment reduces stigma towards people with schizophrenia. *Community Mental Health Journal*.

Perrone, K. M., Perrone, P. A., Jackson, Z. V., Wright, S. L., & Ksiazak, T. M. (2007). Perfectionism, achievement of potential, and attributions of success among gifted adults. *Advanced Development Journal: A Journal on Adult Giftedness, 11*, 106-122.

Perrone, K. M., Perrone, P. A., Ksiazak, T. M., Wright, S. L., & Jackson, Z. V. (2007). Self-perceptions of gifts and talents among adults in a longitudinal study of academically talented high school graduates. *Roeper Review, 29*, 259-264.

Perrone, K. M., Webb, L. K., & Jackson, Z. V. (2007). Relationships between parental attachment, work and family roles, and life satisfaction. *Career Development Quarterly, 55*, 237-248.

Perrone, K. M. & Wright, S. L. (in press). Traditional and nontraditional gender roles in work and family domains: Recent developments and implications for counselors. *Journal of Career Development*.

Tschopp, M. K., Frain, M. P., Bishop, M., & Kontosh, L. G. (in press). Empowerment variables for rehabilitation clients on perceived beliefs concerning work quality of life domains. *Work: A Journal of Prevention, Assessment and Rehabilitation*.

## Recent Presentations

Ægisdóttir, S., Gerstein, L. H., Leung, S. M. A., & Lonner, W. (2008, March). *Methodological issues in cross-cultural research*. Symposium presentation at the 2008 International Counseling Psychology Conference, Chicago, IL.

Bishop, M., Frain, M., & Tschopp, M. K. (2008, August). *Adherence to disease-modifying therapy in persons with multiple sclerosis*. Poster presented at the American Psychological Association Annual Convention, Boston, MA.

Duan, C., Juntunen, C., & Gerstein, L. H. (2008, March). *Training implications of the internationalization movement in counseling psychology*. Symposium co-chairs at the 2008 International Counseling Psychology Conference, Chicago, IL.

Frain, M., Bishop, M., & Tschopp, M. K. (2008, August). *Rehabilitation's role with Gulf Theatre veterans with disabilities*. Poster presented at the American Psychological Association Annual Convention, Boston, MA.

## Recent Presentations, continued

- Gerstein, L. H. (2008, March). *Chinese counseling journals and the internationalization of counseling psychology*. Roundtable discussant at the 2008 International Counseling Psychology Conference, Chicago, IL.
- Gerstein, L. H. (2008, March). *How to succeed in counseling psychology: A panel discussion with diverse counseling psychologists*. Symposium presentation at the 2008 International Counseling Psychology Conference, Chicago, IL.
- Gerstein, L. H. (2008, March). *Speed mentor*. Presenter at the 2008 International Counseling Psychology Conference, Chicago, IL.
- Gerstein, L. H. (2008, March). *The internationalization of counseling: Assumptions, challenges, and opportunities*. Symposium chair at the 2008 International Counseling Psychology Conference, Chicago, IL.
- Gerstein, L. H. (2008, June). *What Future for Tibet? Free, Fettered or Forgotten?* Invited Speaker. Indianapolis Committee on Foreign Relations. Indianapolis, IN.
- Gerstein, L. H. (2008, July). *Peaceful solutions to challenging opportunities*. Keynote speaker at the International Congress: Health, Cities, and Safety - From Science to Practice. Coimbra, Portugal.
- Gerstein, L. H. (2008, August). *Buddhism, psychology, and restoring Tibet's independence: Challenges and nonviolent strategies*. Symposium presentation at the 2008 American Psychological Association Conference. Boston, MA.
- Gerstein, L. H. (2008, August). *Counseling outside the USA: What's happening and what's the benefit?* Symposium chair at the 2008 American Psychological Association Conference. Boston, MA.
- Gerstein, L. H. (2008, August). *Ethno-political and nation disputes in Asia: Examples of collaborative peace-building*. Symposium chair at the 2008 American Psychological Association Conference. Boston, MA.
- Gerstein, L. H. (2008, October). *Politics, diplomacy, and the media*. Invited panelist at the International Interfaith Initiative Conference entitled, Nonviolent Strategies for Sustainable Peace. Indianapolis, IN.
- Gerstein, L. H. (2008, March). *Embracing peace psychology: Counseling psychologists as scientist-practitioners*. Symposium chair at the 2008 International Counseling Psychology Conference, Chicago, IL.
- Gerstein, L. H. & Ægisdóttir, S. (2008, March). *International counseling journals: Publication practices and opportunities*. Roundtable chairs at the 2008 International Counseling Psychology Conference, Chicago, IL.
- Gerstein, L. H. & Heppner, P. P. (2008, March). *Internationalizing counseling psychology: Challenges, opportunities, and strategic planning*. Workshop co-leaders at the 2008 International Counseling Psychology Conference, Chicago, IL.
- Gerstein, L. H. & Heppner, P. P. (2008, March). *The counseling profession outside of the United States*. Symposium presentation at the 2008 International Counseling Psychology Conference, Chicago, IL.
- Heppner, P. P. & Gerstein, L. H. (2008, August). *Meeting international scholars---Improving research collaboration worldwide*. Roundtable co-chairs at 2008 American Psychological Association Conference. Boston, MA.
- Kirkpatrick, D., O'Heron, M., Sellers, E., Snyder, E., & Gerstein, L. H. (2008, March). *Counseling psychology graduate training intersects with social justice!* Roundtable presentation at the 2008 International Counseling Psychology Conference, Chicago, IL.

## Recent Presentations, continued

- Lent, R. W., & Gerstein, L. H. (2008, March). *Building international research teams: Issues, opportunities, and challenges*. Symposium chairs at the 2008 International Counseling Psychology Conference, Chicago, IL.
- Perrone, K. M., Jackson, Z. V., Wright, S. L., & Jackson, Z. V. (March, 2008). *Social cognitive factors among gifted adults*. Paper presented at the International Counseling Psychology Conference, Chicago, IL.
- Perrone, K. M., & Mollen, D. (March, 2008). *Traditional and Nontraditional Career and Family Choices*. Symposium Co-Chairs at the International Counseling Psychology Conference, Chicago, IL
- Stevens, M. J., Gerstein, L. H., Heppner, P. P., & Rubin, N. (2008, March). *Counseling psychology and international psychology: Future possibilities*. Symposium co-chair and presenter at the 2008 International Counseling Psychology Conference, Chicago, IL.
- Tschopp, M. K., Frain, M., Bishop, M. (2008, October). *Employment considerations for individuals with psychiatric disabilities and criminal history*. Presentation at the 2008 National Rehabilitation Association Annual Training Conference, St. Louis, MO.
- Tschopp, M. K., Perkins, D., & Wood, H. A., Leczycki, A., & Oyer, L. (2008, April). *Employment barriers and strategies for individuals with psychiatric disabilities and criminal histories: Consumer perspectives*. Poster presented at the Boston University Center for Psychiatric Rehabilitation 2008 "From Innovation to Practice: The Promise and Challenge of Achieving Recovery for All" International Conference, Boston, MA.
- Webb, L. K. & Perrone, K. M. (March, 2008). *Attachment, social supports, and career decision self-efficacy*. Paper presented at the 2008 International Counseling Psychology Conference, Chicago, IL.
- Wright, S. W. & Perrone, K. M. ( March, 2008). *The impact of attachment on career-related variables*. Paper presented at the 2008 International Counseling Psychology Conference, Chicago, IL.

## Attention: Graduating Master's Students

In order to graduate you must apply for graduation at the Graduate School by the deadline in the semester you intend to graduate.

### **Graduation Application Deadline:**

For Spring 2009                      February 9, 2009

### **Deadline for Receipt of Research Papers, Creative Projects, Theses, and Dissertations:**

For Spring 2009                      April 13, 2009

Applications submitted after the deadline may be switched to the following semester for graduation (students do not have to reapply for graduation). Please see the Graduate School's website: [www.bsu.edu/gradschool](http://www.bsu.edu/gradschool) for forms and more information.

## Upcoming Conferences & Workshops

### **National Multicultural Conference and Summit (NMCS)**

Co-hosted by APA Divisions 17, 35, 44, and 45  
January 15-16, 2009  
New Orleans, LA  
<http://www.multiculturalsummit.org/>

### **26th Annual Winter Roundtable on Cultural Psychology**

February 20-21, 2008  
New York City, NY  
<http://www.tc.columbia.edu/roundtable/>

### **Association of Women in Psychology 34th Annual Conference**

March 12-15, 2009  
Newport, RI  
<http://www.awpsych.org/>

### **American Counseling Association Annual Conference & Exposition**

March 19-23, 2009  
Charlotte, NC  
<http://www.counseling.org/Convention/>

### **Great Lakes Division 17 Regional Counseling Psychology Conference**

March 27-28, 2009  
Muncie, IN  
<http://www.bsu.edu/counselingpsychology/greatlakesconference2009/>

### **American College Personnel Association 2009 Convention**

March 28-April 1, 2009  
Washington, DC  
<http://convention.myacpa.org/>



We appreciate your generous support of CPSY at Ball State University. If you have any questions regarding making a gift to the department, please feel free to contact the Development Office at 765-285-7056.

You can also go to our web page at [www.bsu.edu/counselingpsychology](http://www.bsu.edu/counselingpsychology) and follow the link to "Make a Gift."

Gifts may be made to the CPSY General Fund, the Hofherr Fund, or the Cacavas Fund.



## **Ball State University**

Department of Counseling Psychology and  
Guidance Services

Teachers College

Room 622

Muncie, IN 47306

Phone: 765-285-8040

Fax: 765-285-2067

E-mail: [cpsy@bsu.edu](mailto:cpsy@bsu.edu)

[www.bsu.edu/counselingpsychology](http://www.bsu.edu/counselingpsychology)

## **KEEP IN TOUCH!**

We are always very curious about what our current students and alumni are up to, so  
keep those announcements coming!

The Keep In Touch Form is now online at [www.bsu.edu/counselingpsychology](http://www.bsu.edu/counselingpsychology)