

"EVENTHOUGH ARCHITECTURE IS CONSIDERED OF MATERIAL & TANGIBLE MEDIUMS, IT SHOULD STILL REINFORCE & ENHANCE IMMATERIAL & INTANGIBLE QUALITIES SUCH AS SPIRITUALITY AT BOTH THE INDIVIDUAL & COMMUNITY LEVELS"

PROJECT: UNITED METHODIST SEMINARY
OSCEOLA, INDIANA (SOUTH BEND)

COURSE: ARCH 400 - THESIS STUDIO

STUDENT: TOOP GINDELBERGER

- PERVERSNESS
- PASSIVENESS
- LETHARGY
- RESTFULNESS
- COMFORT
- "DREAM LIKE"
- UNAWARENESS OF SELF WITHIN ENVIRONMENT RATHER THAN WHOLE ENVIRONMENT.
- AWARENESS OF SPECIFIC PIECES OF AN ENVIRONMENT RATHER THAN WHOLE.
- A VISUAL, MENTAL OR PHYSICAL SUPERSTITION WITHIN AND ENVIRONMENT.
- PHYSICAL DOMINATION BY AN ELEMENT MORE AWESOME THAN FEARSOME
- VULNERABILITY WITHOUT OVERWHELMING FEAR.
- HIERARCHY OR ONENESS THROUGH MUSIC, HALL w/ WORLD OR HALL w/ GOD
- A COMMUNITY WORKING TOWARD A COMMON GOAL.

- IRRATIONALITY - NOT BY NORMAL UNDERSTANDING (MENTAL) MORE INSTINCTUAL TRY TO PLACE ORDER OR RATIONALIZE ABOUT IT
- HYPEROTIC - EXTREMELY RESPONSIVE TO SUGGESTIONS OF SELF AND/OR OTHERS
- REFLECTIVE
- CONTEMPLATIVE
- UNAWARENESS OF THE EXISTANCE OF A NON-PHYSICAL POWER OR ELEMENT
- ONE OF A GREATER WHOLE
- LIMITED QUALITY OF DIFFERENT ELEMENT TYPES
- SUELT - LITTLE IF ANY LITERARISH
- MYSTERIOUS
- REVEALING
- DISCOVERY
- UP-LIFTING
- OF THE MIND & SOUL
- NON-DISTRACTING
- CAN APPRECIATE AT MULTIPLE LEVELS

DEFINITIONS OF SPIRITUALITY

3. "Spiritual" is often used to mean simply the opposite of "bodily" or "material." Thus all that is immaterial in man (emotions, passions, memory, etc.) is often called "spiritual." It is very important to remember that what is "spiritual" in this sense is not necessarily good. There is nothing specially fine about the mere fact of immateriality. Immaterial things may, like material things, be good or bad or indifferent.

4. Some people use "spirit" to mean that relatively supernatural element which is given to every man at his creation—the rational element. This is, I think, the most useful way of employing the word. Here again it is important to realise that what is "spiritual" is not necessarily good. A Spirit (in this sense) can be either the best or the worst of created things. It is because Man is (in this sense) a spiritual animal that he can become either a son of God or a devil.

5. Finally, Christian writers use "spirit" and "spiritual" to mean the life which arises in such rational beings when they voluntarily surrender to Divine grace and become sons of the Heavenly Father in Christ. It is in this sense, and in this sense alone, that the "spiritual" is always good.

MIRACLES CS. LEWIS

SPIRITUALITY - ASSOCIATIONS AND QUALITIES

- ASIDE FROM PHYSICAL INVESTIGABILITY
- SUPERNATURAL
- FRAME OF MIND
- EMOTIONAL/ MOOD/ ATTITUDE
- ASIDE FROM, BUT INFLUENCABLE BY NATURE, WHERE NATURE IS DEFINED AS THAT WHICH IS UNDERSTANDABLE AND MEASURABLE AT SOME LEVEL.
- ESSENCE
- SENTIMENT - RESPONSIVE TO FEELING & LEVEL OF PERCEPTION.
- SENSATION
- "TEXTURE TO PATTERN, FROM PATTERN TO SPACE, FROM SPACE TO TIME..." GRONIS AND KATUNDA
- DOESN'T RELY ON A "PLASTIC ENTITY" (COMINGLY ORGANIZED) SO YOU NEVER FEEL YOU'VE SEEN THE END OR WHOLE OF IT. GRONIS AND KATUNDA

- NEVER TRY AND STOP TIME MAKE THE MOOD AND UNITY FLOW AHEAD THROUGHOUT CHANGE AND MOVEMENT
- UNDERSTANDING THROUGH INTERACTION AND RATIONALIZATION
- SPIRITUAL UNITY RATHER THAN PLASTIC PHYSICAL UNITY
- CONTINUITY AND CONTRAST AT VARYING LEVELS.
- SUBJECTIVITY

AN EXPERIENTIAL CYCLE.

THE WALK IS MOVING THROUGH TIME AND SPACE.

- OCCASIONALLY -

HE COMES UPON AN ELEMENT OR PLACE WHICH SPIRITUALLY MOVES HIM IN SOME WAY WHETHER BY HIS SENSES OR MIND OR BOTH (DISCOVERY)

- OCCASIONALLY -

HE INTERACTS WITH AND EXPERIENCES IT AT SOME LEVEL.

- OCCASIONALLY -

HE WILL DOCUMENT IT IN HIS MIND, BY PHOTO, ART, OR COMBINATIONS.

- THEN -

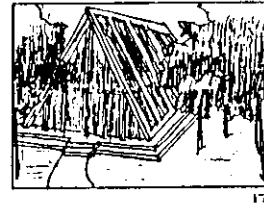
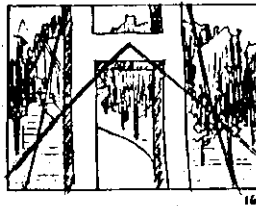
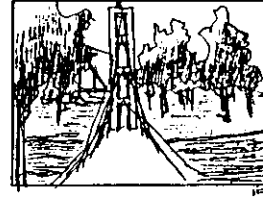
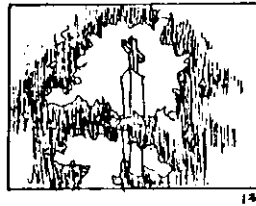
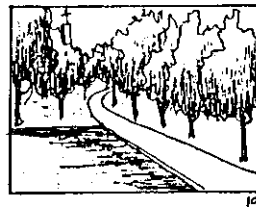
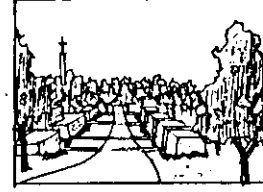
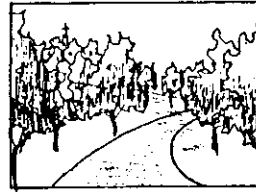
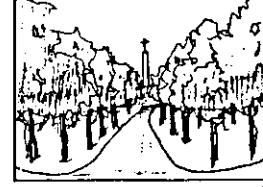
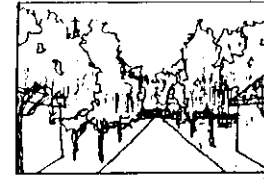
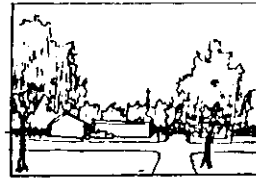
HE WILL MOVE ON.

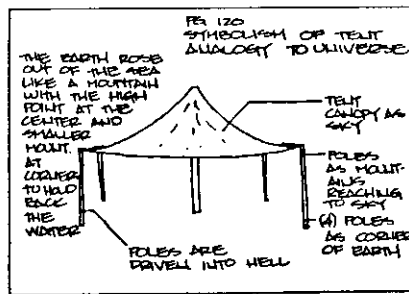
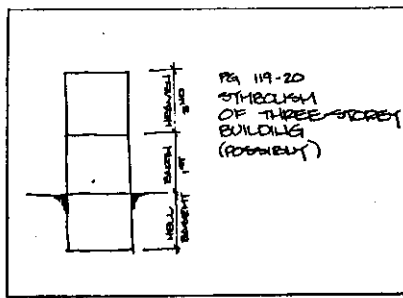
- OCCASIONALLY -

HE WILL RETURN TO THE SPOT OR WILL BE REMINDED OF IT BY A SIMILAR EXPERIENCE, WHETHER PHYSICALLY, MENTALLY OR EMOTIONALLY (REMEMBER)

- THIS -

HE CAN OR WILL BE SPIRITUALLY MOVED BY IT AGAIN.





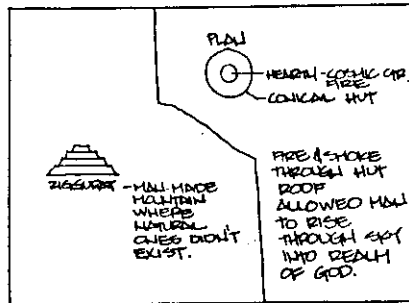
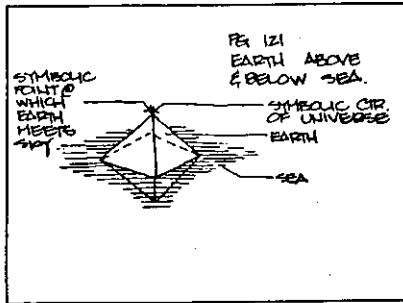
"TEMPLE AS A GATE TO HEAVEN"
"THEOPHANY" → A VISIBLE MANIFESTATION OF A DEITY

DOOR WAY WAS FORTICATED IN SOME RELATION TO THE RISING SUN.

↓
SOURCE OF LIFE

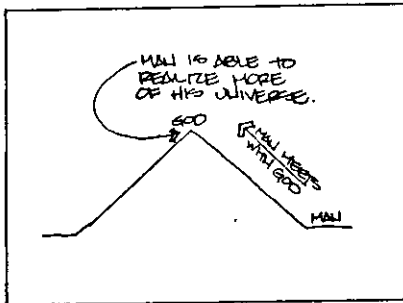
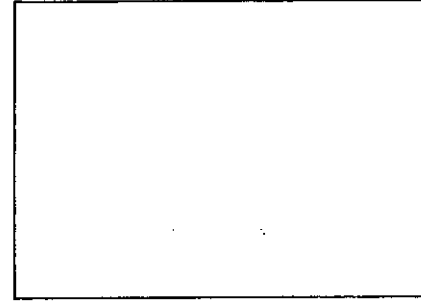
RISING SUN STRIKING BUILDING COULD REPRESENT GOD'S COMING TO HIS TEMPLE.

GOD BOTH LIVES AND MANIFESTS SELF THERE.



"THE SYMBOLISM OF THE ARCHITECTURE ATTEMPTED TO COLIVEY THIS UNDERSTANDING OF THE DIVINE AS BEING A PRESENCE, AN ABSENCE AND A COMING DERIVED FROM THE EXISTENTIAL EXPERIENCE OF MAN." PG 141

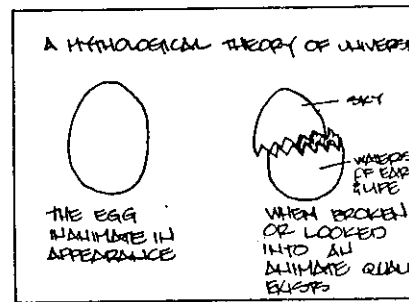
"THE HEARNESS TO GOD ONLY EXPERIENCED ON PARTICULAR OCCASIONS PG 141

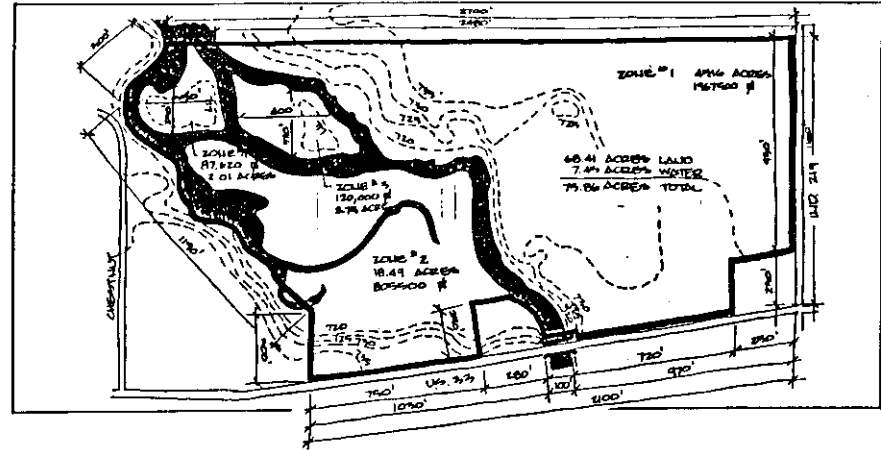
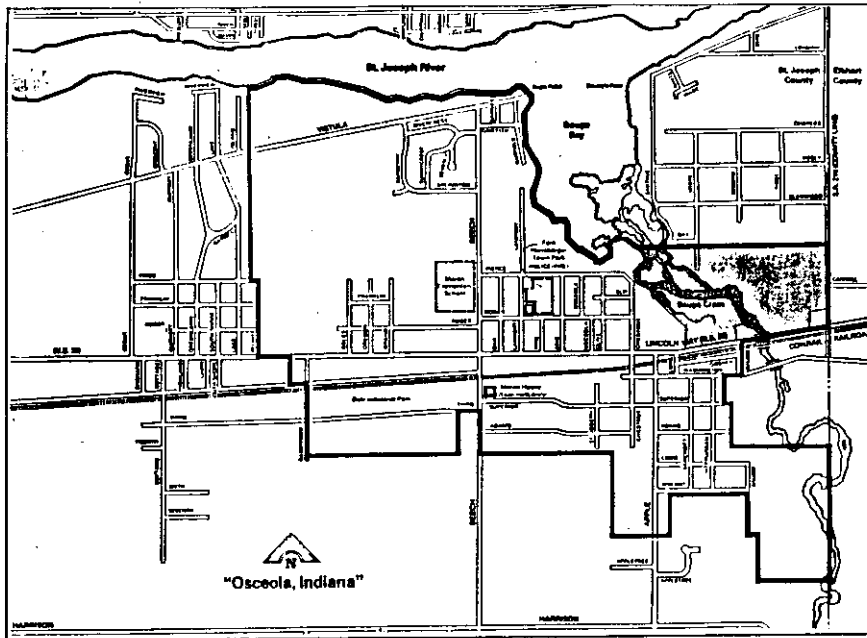


NOT ALL IS OBJECTIVELY UNDERSTANDABLE

"...THE ARCHITECTURAL MODEL DESCRIBABLE IN THE MYTHOLOGICAL WRITINGS IS NOT ANALYTICAL, NEVER OBJECTIVE BUT FREQUENTLY SUBTLE. THIS ENABLED IT TO SAY THINGS IN MANY WAYS AND SO TO ALLOW FOR THE VARIETY INHERENT IN MAN'S CONFRONTATION OF THE UNIVERSE." PG 127

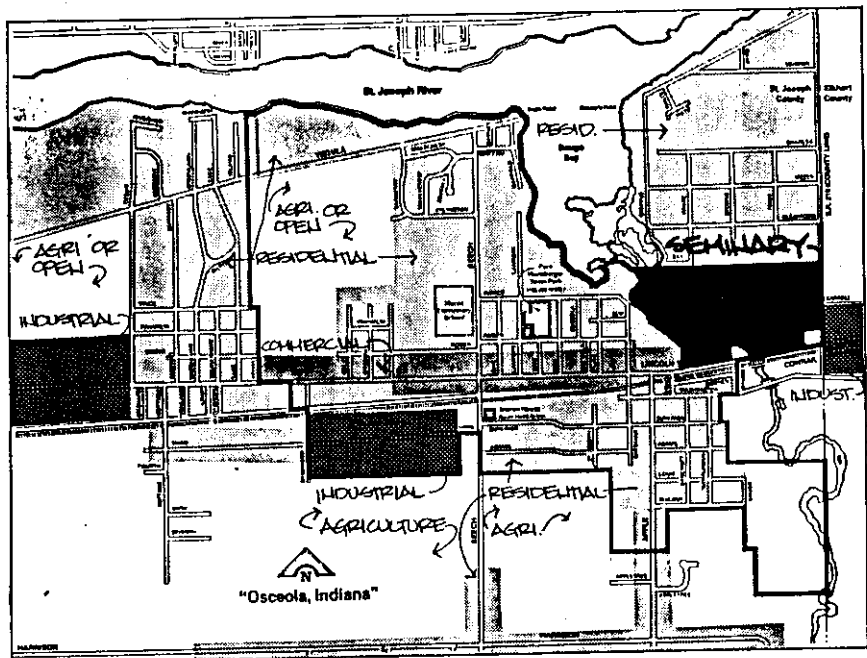
"IN THE MYTH A MAN COULD ASCEND THE COSMIC MOUNTAIN OR CLIMB THE HEAVENLY LADDER OF THE RAINBOW TO MEET HIS GOD. THE SAME JOURNEY COULD ALSO BE ACROSS THE GREAT RIVER, FOR IT PASSED THROUGH THE WATERS OF THE COSMIC JORDAN." PG 127



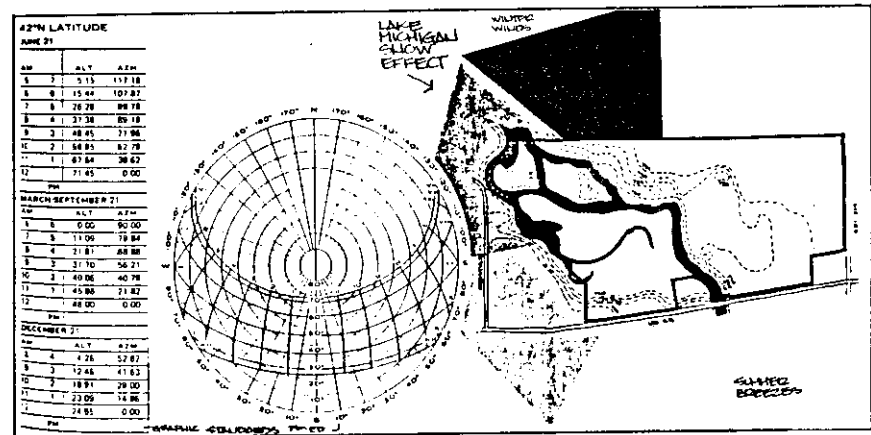


NOTES/CONCLUSIONS
 THE SITE IS DIVIDED INTO 4 FAIRLY DISTINCT ZONES BY THE CREEK. ZONES 2-4 CURRENTLY ARE IN THE FLOOD PLANE AND POSSESS SOME MARGINAL AREAS, THUS WOULD REQUIRE SOME ATTENTION TO BECOME BUILDABLE WHILE ZONE 1 (THE LARGEST) IS THE MOST BUILDABLE. ZONE 1 MAY NOT BE LARGE ENOUGH TO CREATE THE PROPER ENVIRONMENT THROUGHOUT THE COMPLEX THOUGH.

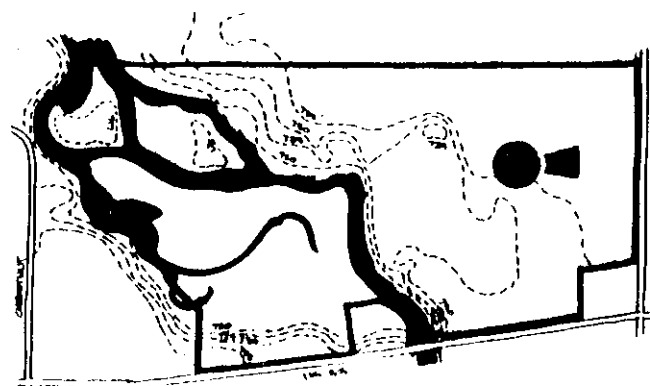
OSCEOLA ZONING

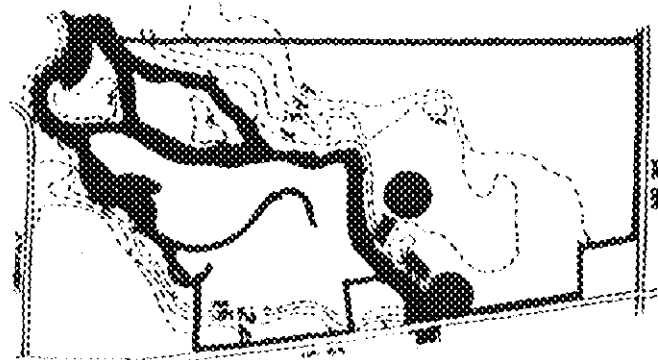
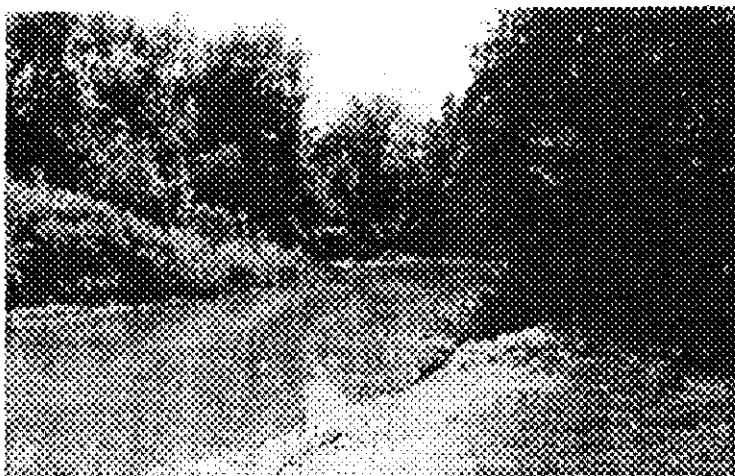


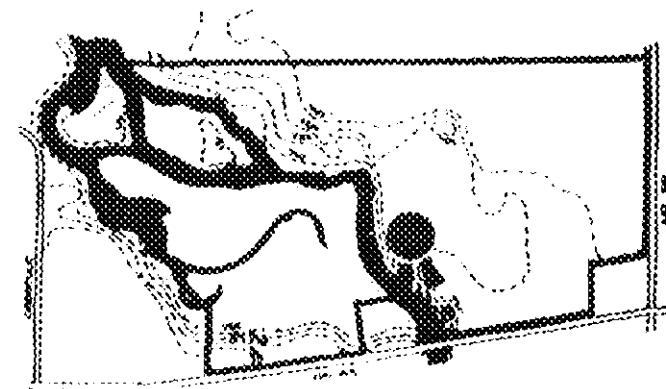
CLIMATE

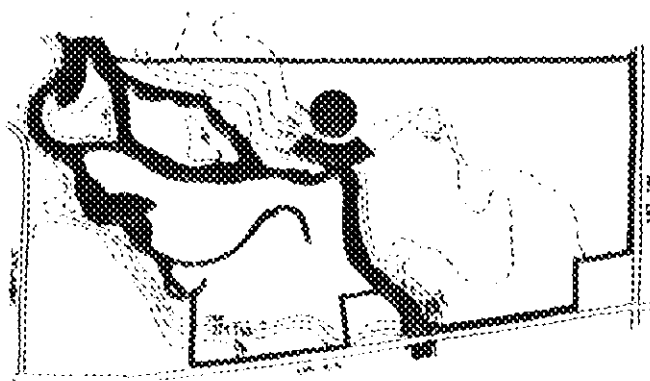


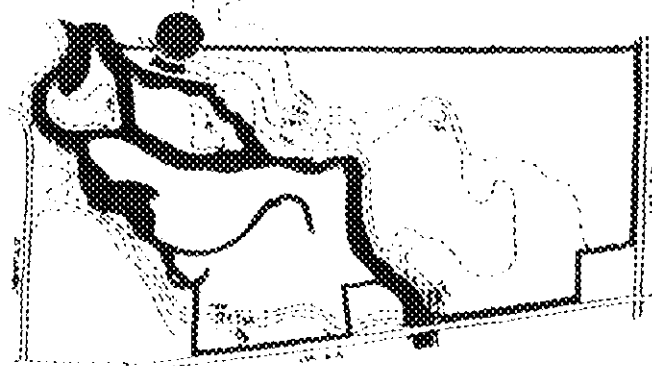
NOTES/CONCLUSIONS
 THE ANNUAL NORMAL MEAN TEMPERATURE IS 49.4° RANGE -5° - 85°
 THE ANNUAL NORMAL PRECIPITATION IS 35.7"
 THIS INFORMATION IS ALL VALUABLE TO MY PROJECT IN THAT I FEEL THAT PHYSICAL COMFORT IS THE QUALITY NECESSARY IN SPATIAL EXPERIENCES.
 THIS AREA IS AFFECTED BY LAKE MICHIGAN IN WINTER (HEAVIER SNOW AND VERY SLIGHTLY INCREASED TEMPERATURES) AND OCCASIONALLY THE CROSS OF SOUTH BEND'S ETHANOL PLANT IN SUMMER (SOUTH WEST)

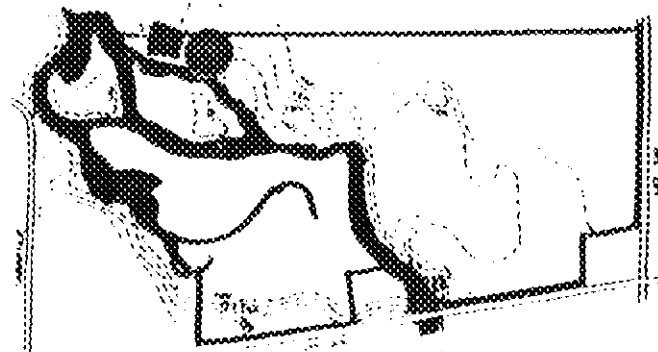


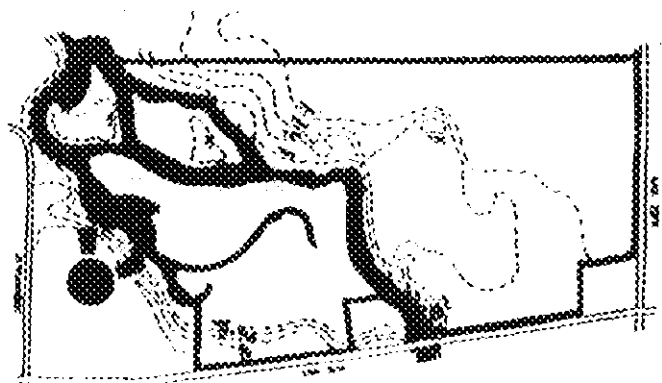
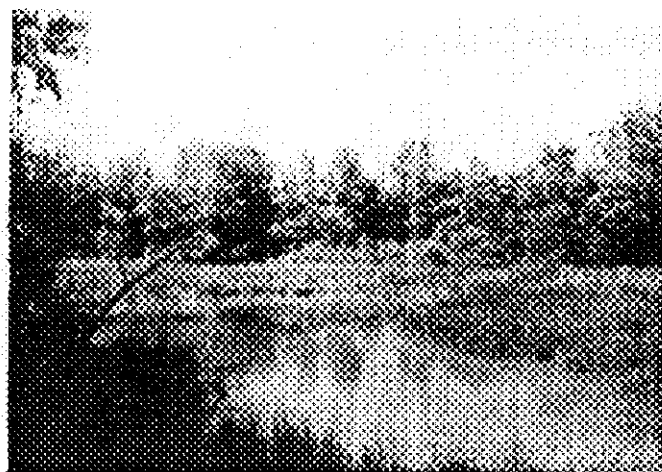


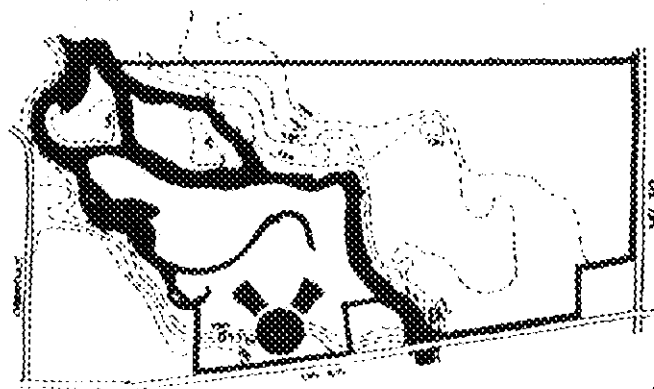


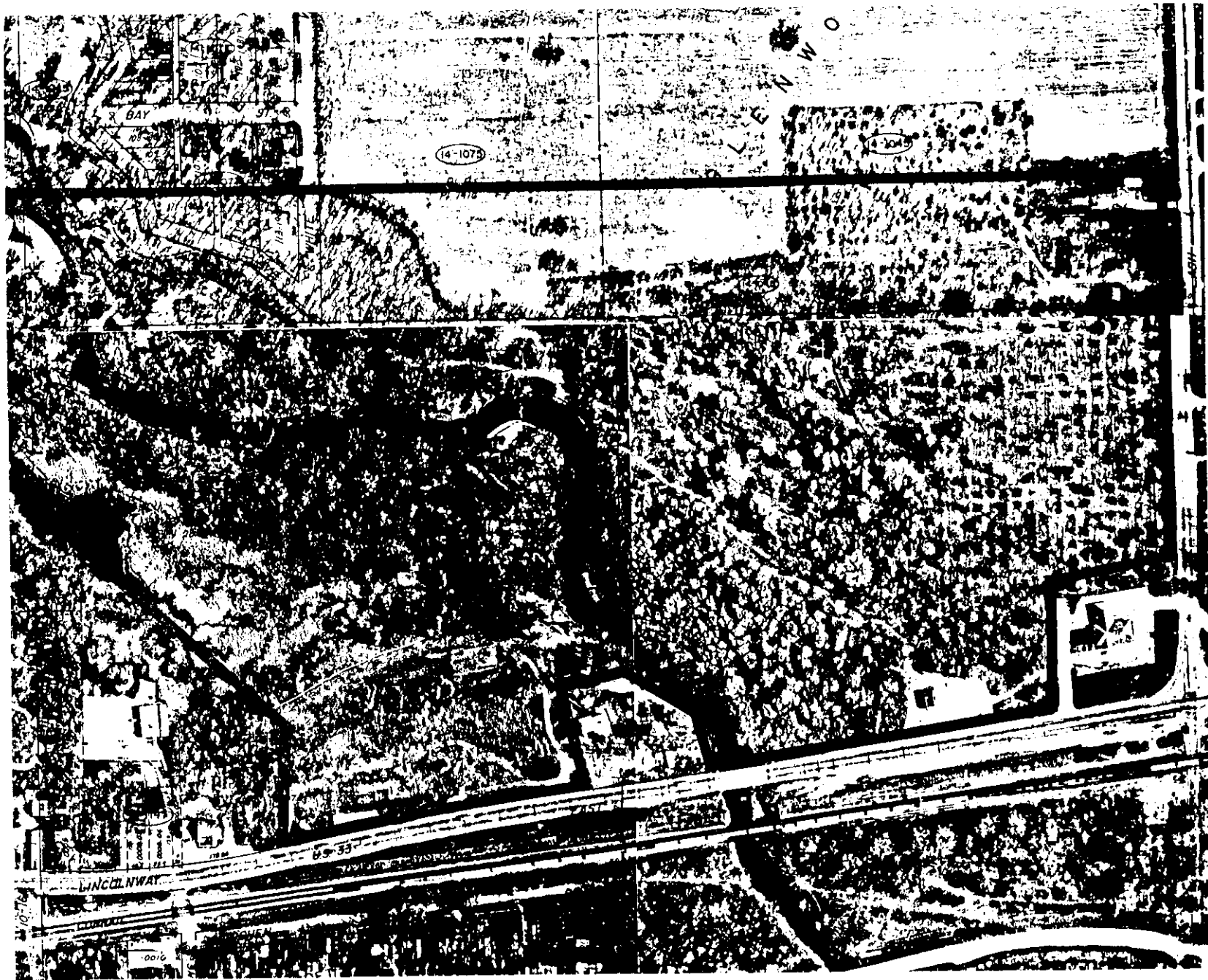


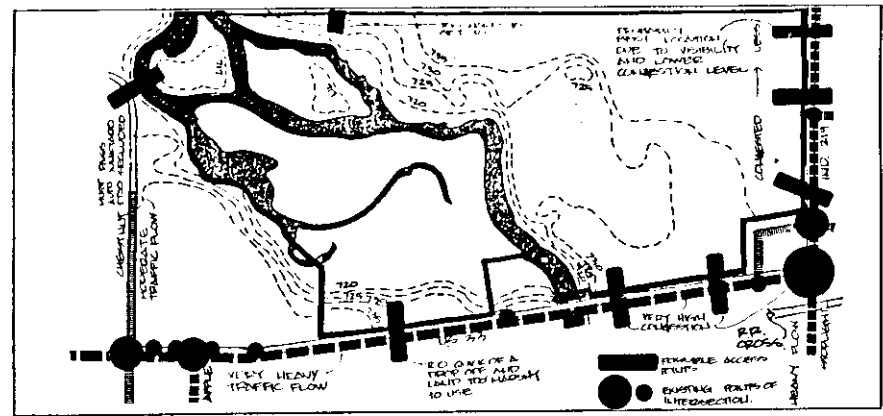
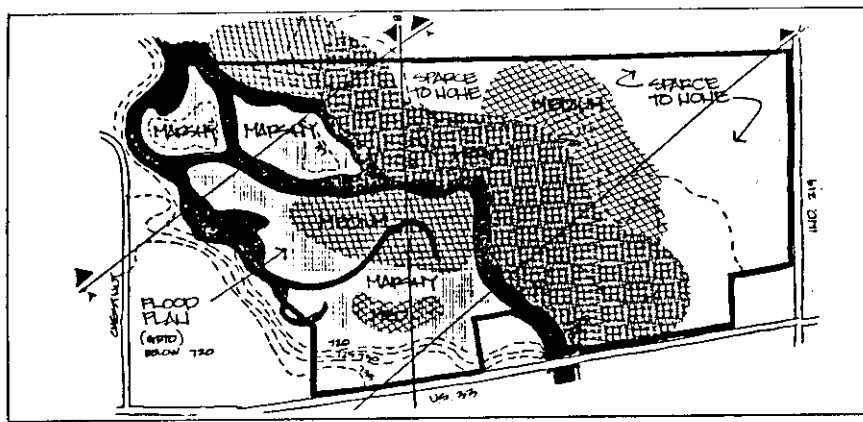












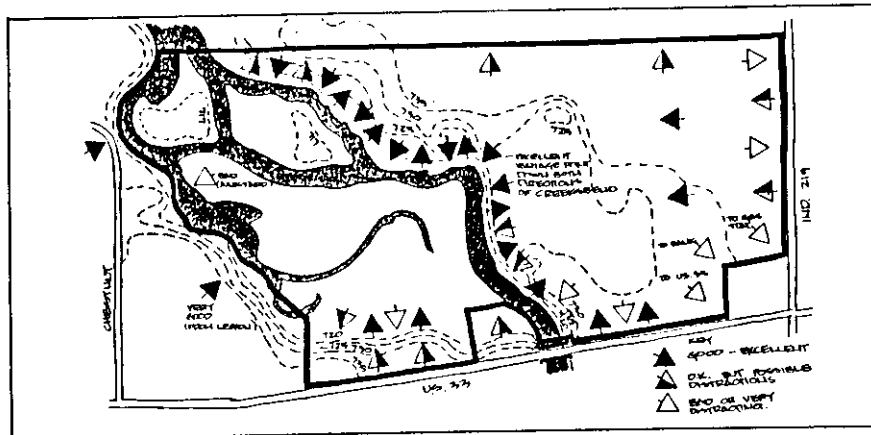
NOTES/calculations

THE SITE PROVIDES FOR A GREAT VARIETY OF NATURAL VEGETATION COVER, FROM THE MOST DENSELY WOODED AREA ALONG THE CREEK'S EAST BANK TO THE ALMOST BARREN AREA ALONG IHD 219 (FORMER ORANGE) TO THE MARSHY FLOOD PLANE AREAS ALONG THE SITE'S S-W BORDER. THIS VARIETY ALLOWS FOR VARIOUS LEVELS OF CLIMATE AND ENVIRONMENTAL SHIELDING. IT ALSO WILL ALLOW FOR A BIGGER VARIETY OF USAGE TYPE ZONING TO OCCUR AS WELL AS HIGH POTENTIAL FOR USE OF NATURE

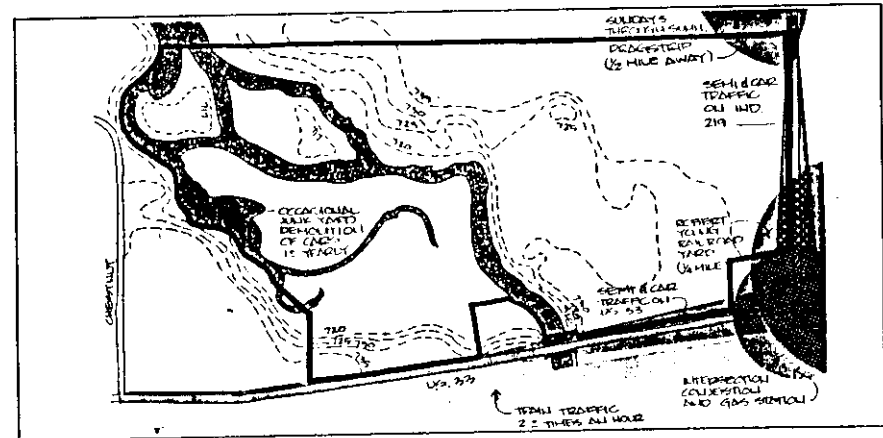
NOTES/calculations

BOTH U.S. 33 AND IHD 219 ARE HEAVILY CONGESTED (U.S. 33 WORSE), ESPECIALLY A STOPLIGHT WHERE PEOPLE & STOPPED FOR LIGHT &/OR TRAIL. BUT ONE OF THESE TWO THOROUGHFARES ARE THE MOST APPROPRIATE FOR ACCESS TO THE SITE DUE TO HIGHER VISIBILITY AND NICER SITE APPROACH ENVIRONMENTS. I HAVE CONCLUDED THAT IHD 219 AT SOME DISTANCE FROM STOPLIGHT IS THE BEST APPROACH LOCATION DUE TO ITS FLOW.

VIEWS



NOISE

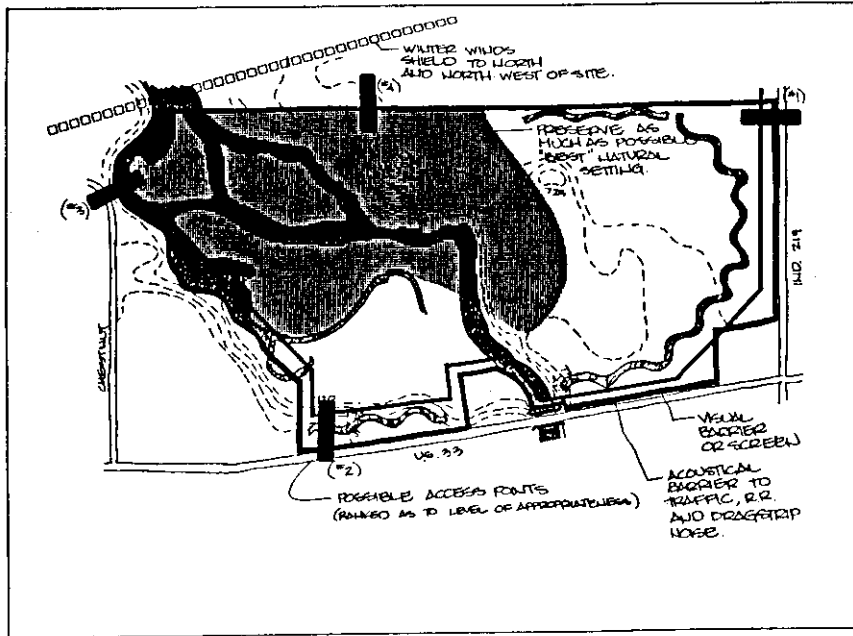


NOTES/calculations

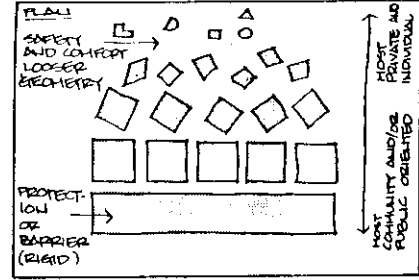
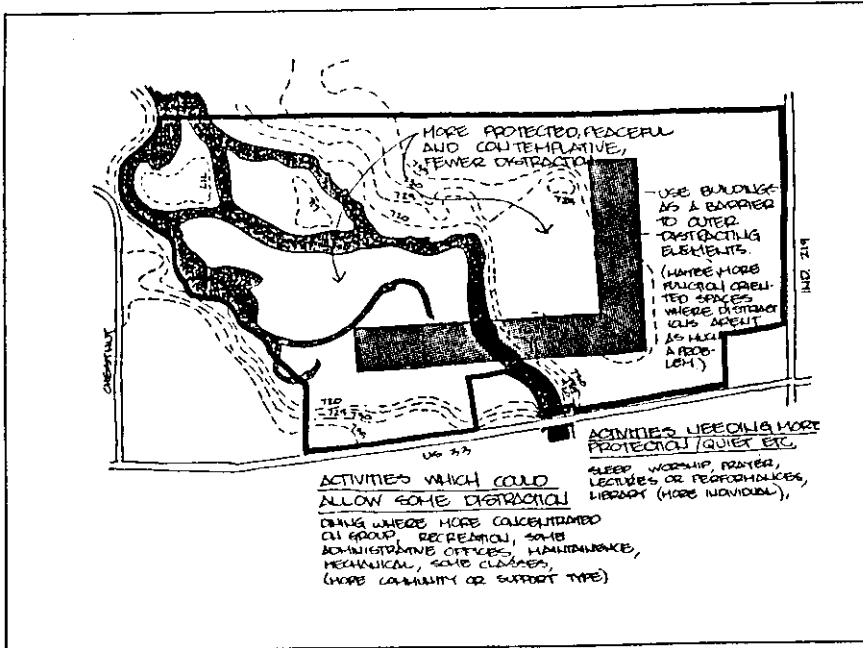
THE "BEST" VIEWS AND MOST NON-DISTRACTING, OCCUR ALONG CREEK HULLITY, ESPECIALLY @NORTHERN HALF OF SITE. THIS IS IMPORTANT FOR CREATING ENVIRONMENTS WHICH ARE TO DEAL WITH SITE AS IS. OTHER MORE DISTRACTING AREAS SUCH AS PERIMETERS OF SITE AND ADJACENT PROPERTIES MIGHT NEED SOME ADDITIONAL MANIPULATIONS OF ENVIRONMENT FOR CERTAIN QUALITIES TO EXIST.

NOTES/calculations

NOISE CONTROL WILL BE AN IMPORTANT ASPECT OF THE DESIGN SOLUTION. DUE TO THE AMOUNT OF NOISE GENERATED DAILY TO THE SOUTH AND EAST EDGES OF THE SITE, ESPECIALLY AT THE S-E CORNER THE DESIGN SOLUTION SHOULD REFLECT AND RESPOND TO THIS CONDITION IN THE PLACEMENT OF CERTAIN SPACES AND BUFFERS KEEPING IN MIND THAT NOISE DISTRACTION TO CERTAIN SPACES COULD RUIN ANY CHANCE OF A SPIRITUAL QUALITY EXISTING.



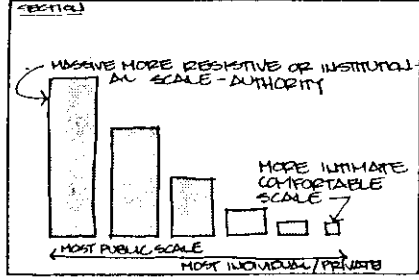
SITE - CONCEPT



COMMUNITY AND INDIVIDUAL GEOMETRIES

COMMUNITY
 GENERALLY MORE STRUCTURED FORMAL, RULE BOUND AND UNDERSTANDABLE SO THAT THE GREATER POPULATION IS ABLE TO EASILY INTERACT WITH TAKES LESS TO UNDERSTAND AND GAIN ACCESS TO.

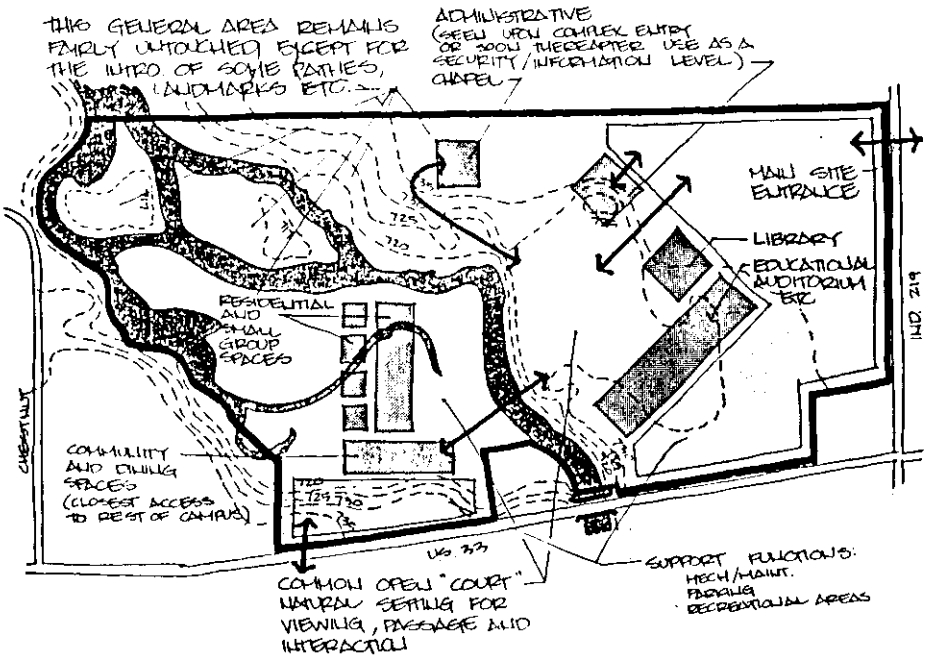
INDIVIDUAL
 LESS STRUCTURED, INFORMAL, RANDOM, UNIQUE, FREE. MOST UNDERSTOOD BY INDIVIDUAL USER THIS DISTINGUISHING ONE'S TERRITORY BETTER. IDENTITY

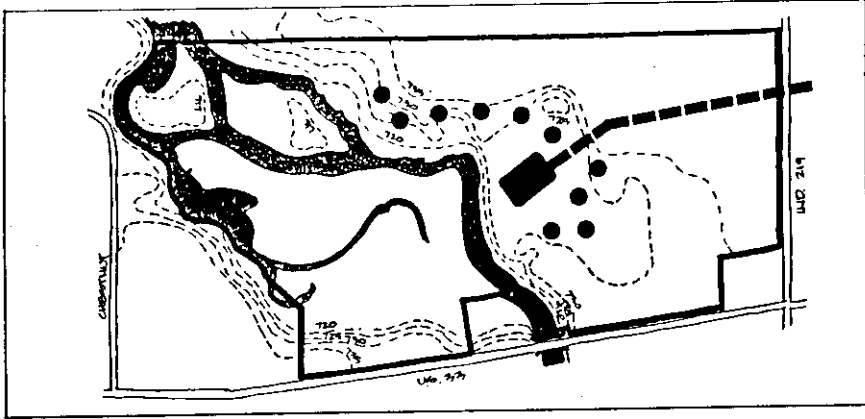


PROBLEMS

HOW DOES ONE CREATE A STRUCTURE AS A BARRIER TO OUTSIDE ENVIRONMENTAL DISTRACTIONS, YET STILL HAVE IT FEEL AS BEING WELCOMING TO THOSE WHO BELONG OR ARE ALLOWED ACCESS?

HOW DOES ONE CREATE A SAFE AND SECURE FEEL THROUGH A LOOSE, LESS RIGID GEOMETRY, (VERY FEW BARRIER TRAITS WITHIN FEEL)?





HISTORIC REFERENCE
 KATSURA'S GAROELS
 MEDIEVAL CITY
 CAMP GROUNDS
 BALL ST AS A WHOLE
 CONCORDIA SEMINARY

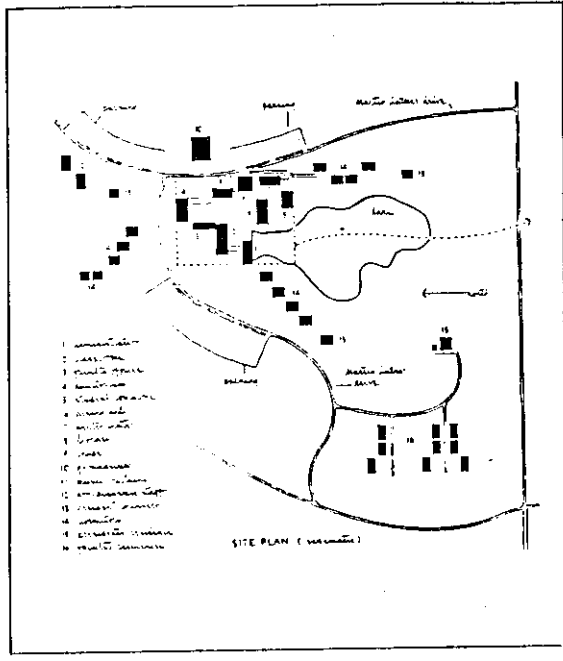
PROS & CONS
 * CONFORMS MORE TO NATURAL ENVIRONMENT & COLLOIDS
 * TOO MUCH LAND USED AND ALTERING
 * ALLOWS FOR LARGER VARIETY VOIDS BETWEEN BUILDINGS
 * MORE EXPERIENTIAL POSS.

NOTES
 * GREAT VARIETY w/ INFINITE POSSIBILITIES
 * VERY LITTLE CONVENIENCE AND LESS COMPLETE INTEGRATION POSSIBILITY
 * DISREGARDING
 * NO USE OF CREEK

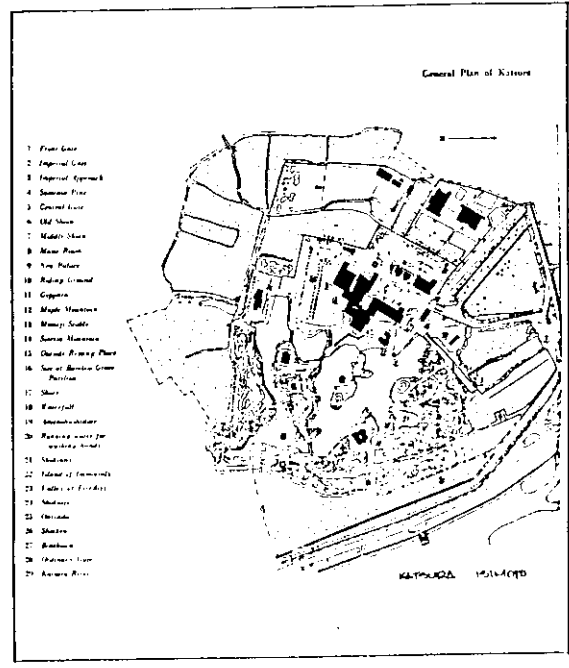
KATSURA

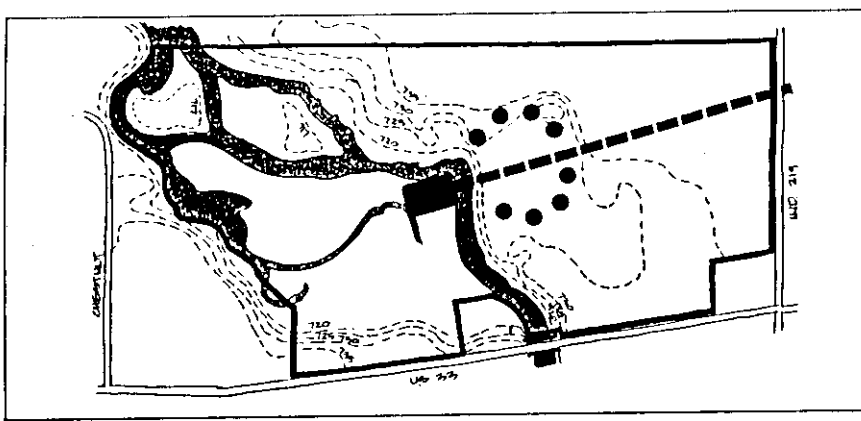


CONCORDIA THEO. SEMINARY
 1890 SARGENT



KATSURA



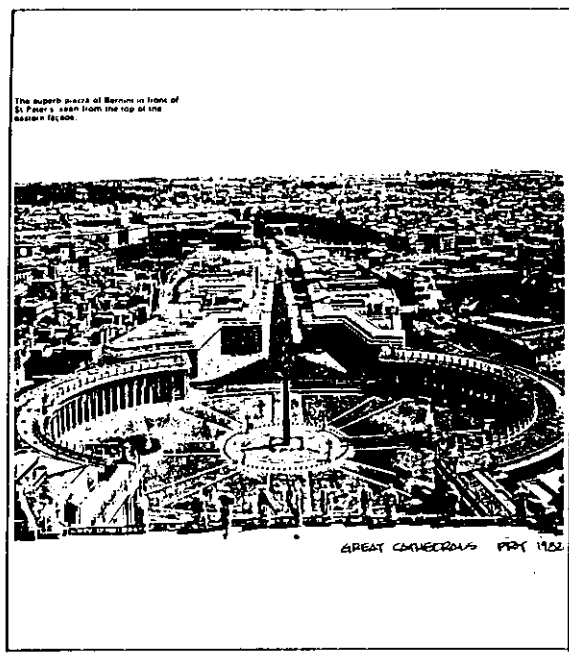


HISTORIC REFERENCE
 ITALIAN RENAISSANCE
 ST PETER'S
 BALL ST. QUAD.
 ROCKEFELLER CENTER
 UNITED THEO. SEMINARY

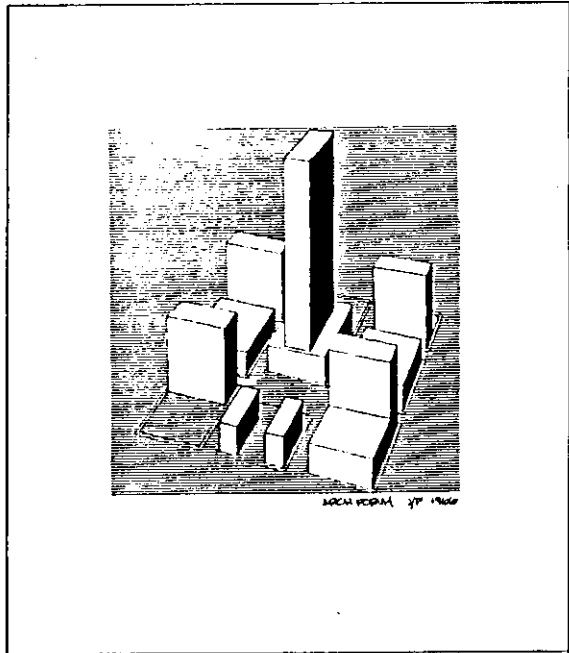
PROS & CONS
 + LOW SIGHT USAGE
 + COMMON SPACE & EASY ACCESS TO ALL
 • LESS INTERACTION w/ REST OF SITE
 • INWARD LOOKING
 • LITTLE VARIETY OF VIEWS

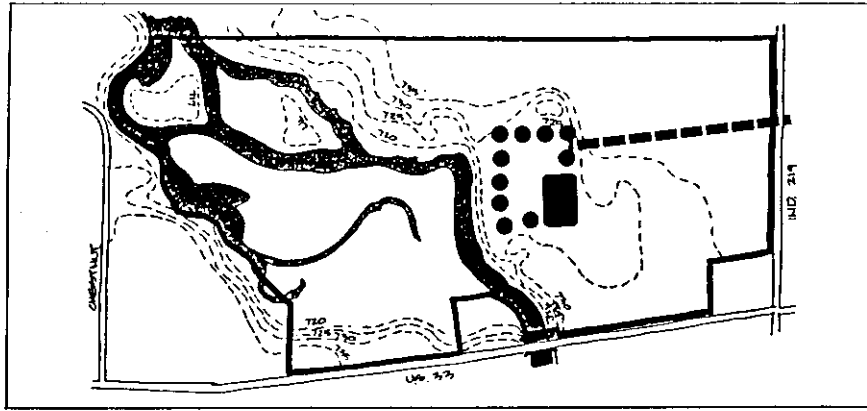
NOTES
 • VERY HIERARCHICAL
 • POSSIBLE START TO ZONING BY SEPARATION DOWN CENTER
 + CROSS & INTERSECTION
 + CROSS

ST. PETER'S PIAZZA
 BECA-111



ROCKEFELLER CTR.
 BECA- ARCHITECTS





HISTORIC REFERENCE

CLOISTERS
 MONASTRIES
 CRAWBROOK ACAD. ART.
 LOPEZ - LE TOURETTE

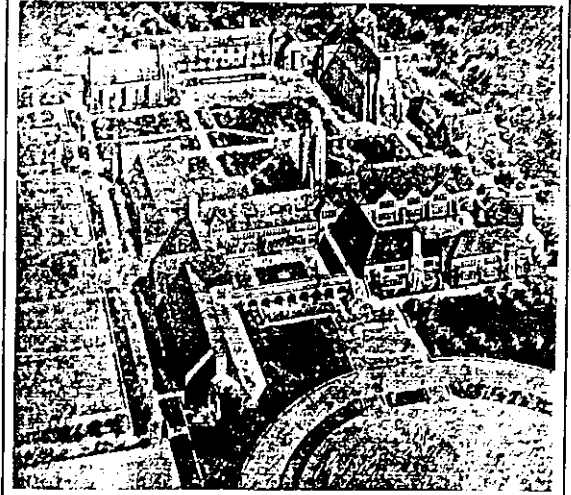
PROS & CONS

- LESS SITE USAGE
- EASY ACCESS TO ALL (road etc)
- LESS INTERACTION WITH REST OF SITE
- MORE INWARD LOOKING
- LOW CREEK USE & CROSS

NOTES

POSSIBLE USE OF 3 OR 50 OF THESE MIGHT ALLOW FOR AN ADEQUATE REPERITUAL AND POSS. MORE EXPERIENTIAL ATMOSPHERE (ESPECIALLY W/MORE OPENINGS)

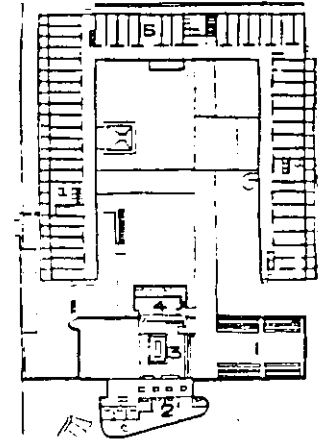
CRAWBROOK ACAD.
 OF ART
 BUEL SAMUEL

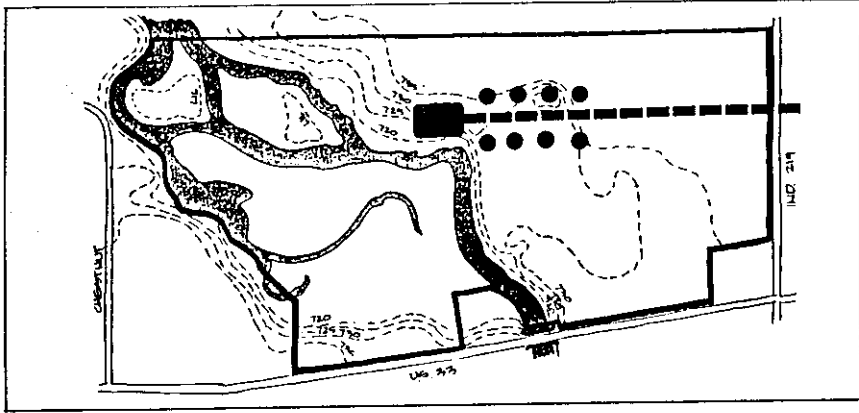


Crawbrook School - His drawing
 THE SAMUEL DOOR - SAMUEL

LE TOURETTE
 LECORBUSIER

- 1 Church
- 2 Chapel
- 3 Altar
- 4 Sacristy
- 5 Cells



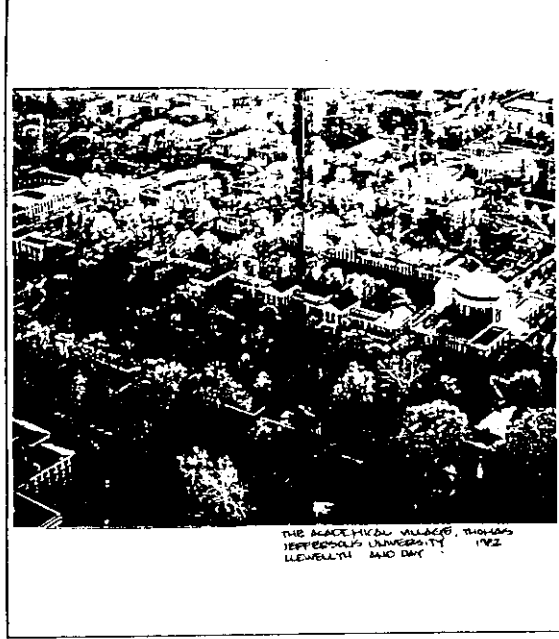


HISTORIC REFERENCE
 GREENWICH OBSERV.
 UNIVERSITY OF VIRGINIA
 EGYPTIAN TOMBS/TEMPLE

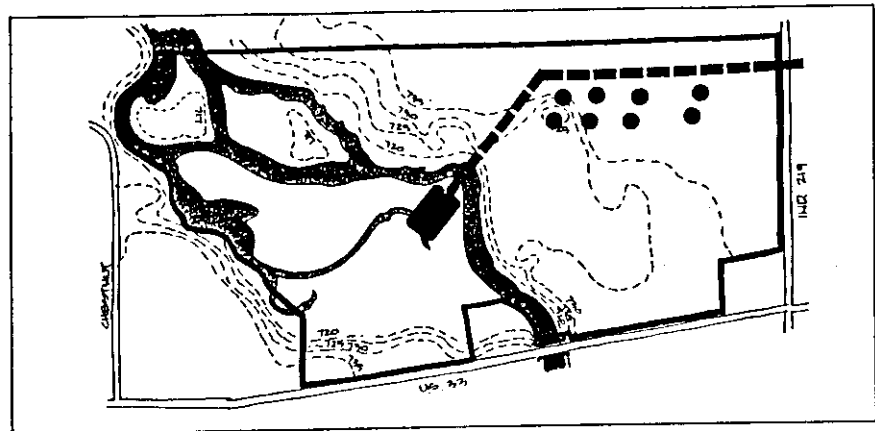
PROS & CONS
 • VERY LITTLE INTERACT OF BUILDINGS
 • "BLAND"
 + STRONG SEQUENTIAL
 • LACK OF "WHOLENESS" TO CAMPUS
 • SEGREGATE "ISLANDS"

NOTES
 VERY HIERARCHICAL
 VERY INSTITUTIONAL APPEARANCE
 TOO MUCH CONTROL
 CIRCULATION IS SEGREGATING

UNIVERSITY OF VIRGINIA
 THOMAS JEFFERSON



THE ACADEMICAL VILLAGE, THOMAS JEFFERSON'S UNIVERSITY, 1728-1828. LEWELLYN AND DAY

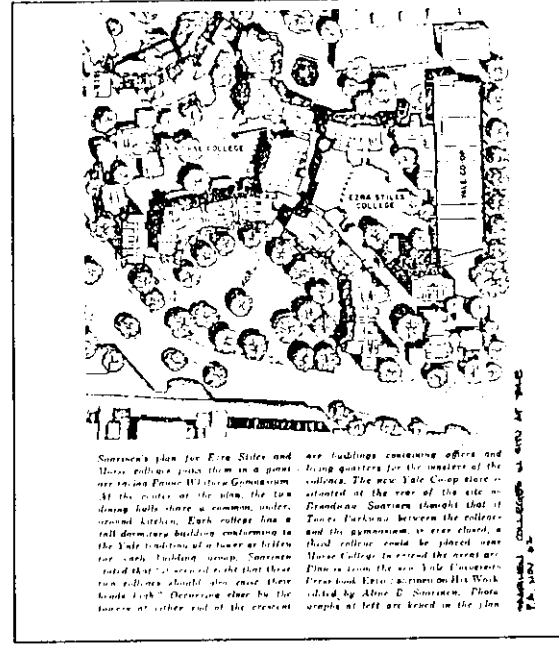


HISTORIC REFERENCE
 CENTRAL PARK w/ BLDGS. AND MORE ACTIVITY
 B.O.U. QUAD. w/ PERIMETER VEHICULAR
 ERZA STILES AND SAMUEL MORSE COLLEGE

PROS & CONS
 + SEPERATION OF PEDESTRIAN & VEHICULAR
 • TOO RIGID AS IS NOW.
 • NO FOCUS EASILY NOTICED
 + INTERACTION OF "ISLANDS"

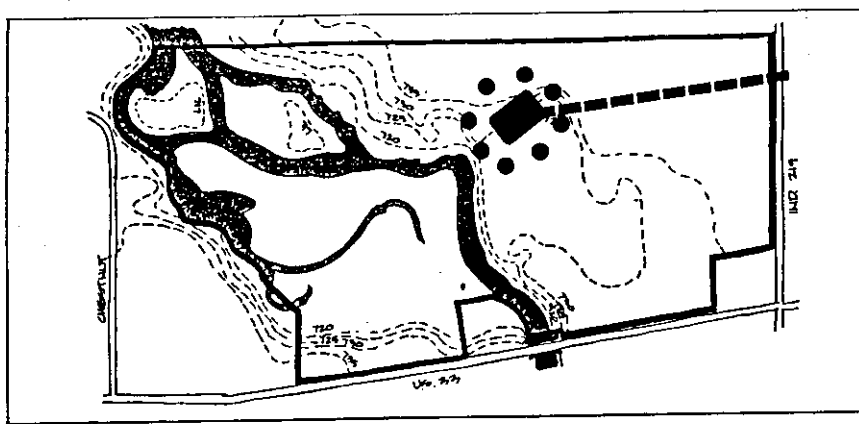
NOTES
 TOO STATIC AS IS
 BUT GOOD FOR SAFETY AND WALKABILITY (LOWER) EXPERIENCES.
 + CROSS CREEK

ERZA STILES AND SAMUEL MORSE COLLEGES
 BERO SAMMELN



Sammeln's plan for Erza Stiles and Samuel Morse colleges is very different from the plan for the University of Virginia. It shows a more integrated and less hierarchical layout. The plan includes labels for 'ERZA STILES COLLEGE', 'SAMUEL MORSE COLLEGE', 'LAWYER BUILDING', 'LAWYER COLLEGE', 'LAWYER HALL', 'LAWYER HOUSE', 'LAWYER CHURCH', 'LAWYER GYMNASIUM', 'LAWYER LIBRARY', 'LAWYER MUSEUM', 'LAWYER THEATRE', 'LAWYER OPERA HOUSE', 'LAWYER AUDITORIUM'. The plan shows a central axis with buildings on either side, and a large open area in the center. The plan is oriented with 'ERZA STILES COLLEGE' on the left and 'SAMUEL MORSE COLLEGE' on the right.

ERZA STILES AND SAMUEL MORSE COLLEGES - BERO SAMMELN



HISTORIC REFERENCE

MOLT ST. MICHEL
(4% HILL)
ST. PETERS OBELISK
COURT HOUSES IN U.S.

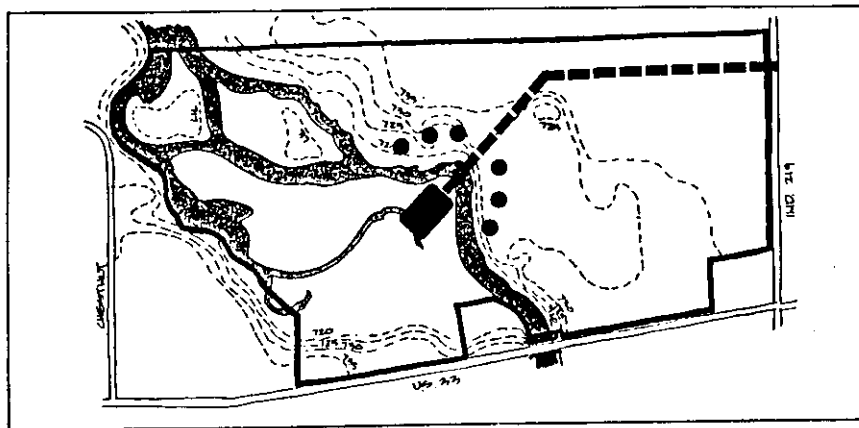
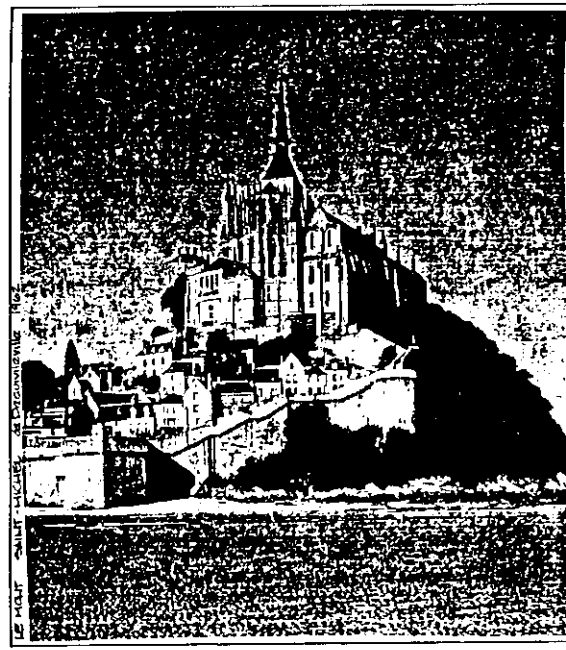
PROS & CONS

- LITTLE WASTE OF LAND
- IDENTIFIABLE ELEMENT
- SOME PROBLEMS WITH DIRECT ACCESS BETWEEN BUILDINGS ON OPPOSITE SIDES
- INWARD LOOKING.

NOTES

- VERY STRONG FOCAL POINT & HIERARCHIC
- NO USE ACROSS CREEK

MOLT ST. MICHEL



HISTORIC REFERENCE

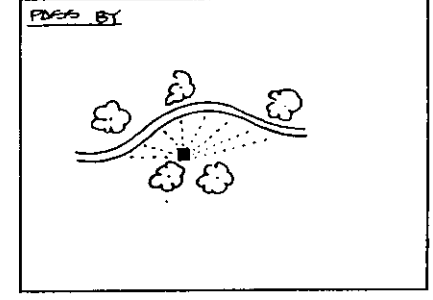
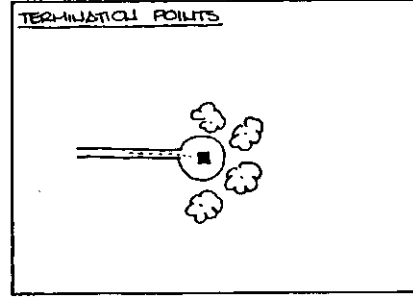
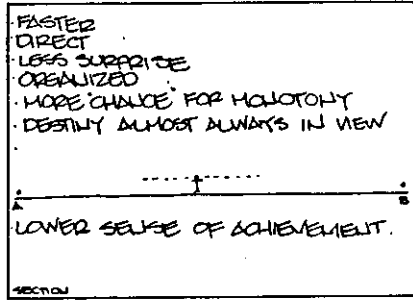
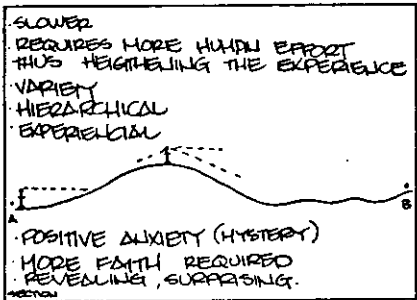
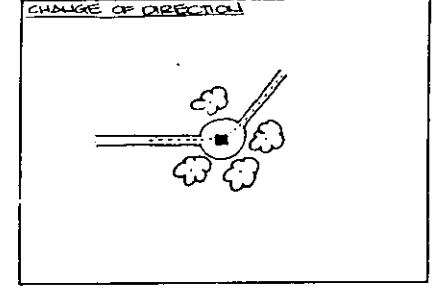
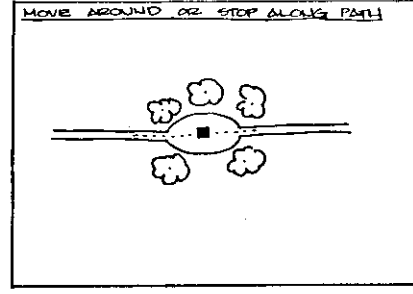
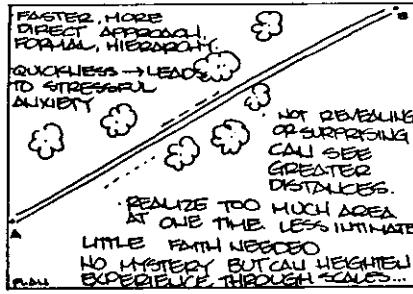
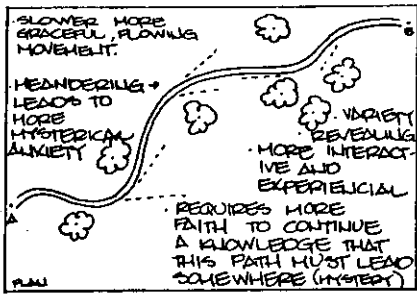
PROS & CONS

- + ZONE DEFINITION
- + VEHICLE BREAKS CAMPUS?
- + DEFINITE FOCUS
- + BOTH INWARD & OUTWARD LOOKING - NO ENCLOSURE
- o TOO MUCH @ "BEST" NATURAL SLOP OF SITE.

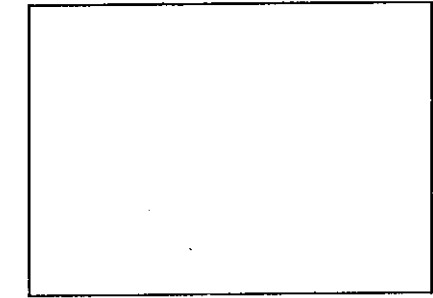
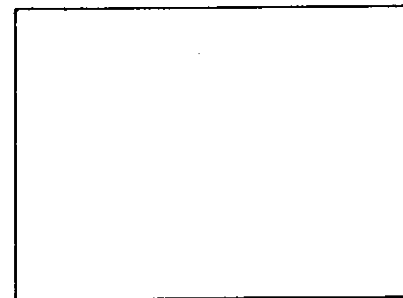
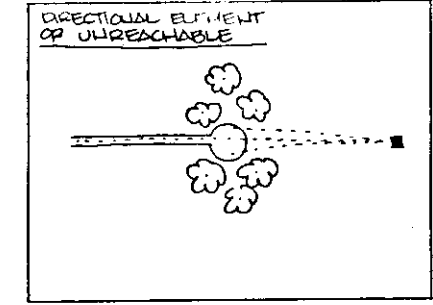
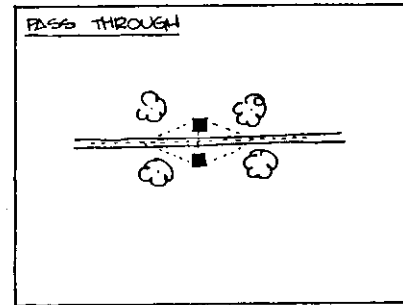
NOTES

COMPACT - LOW LAND USE
+ BUCK INTERDEPENDENT.

(CROSS CREEK (UNIQUE EXP))
STRONG HIERARCHY
AUTHENTIC TO SITE SHAPE



CAMPUS - NODES AND LANDMARKS



KATELRA

"A POINT TO FOCUS THROUGH AND A FRAMED OPENING/VIEW"

PLAY OF LIGHT AND DARK.

A LEVEL OF SECURITY WITHOUT A PHYSICAL BARRIER

MYSTERY

FRAGMENT OF A LARGER ENVIRONMENT.



KATELRA

"THE TERMINATION POINT OF A PHYSICAL PATH"

ADDS AN ADDITIONAL SIGNIFICANCE TO THE LANDSCAPE/OBJECT.

INVOLVES RATIONAL, THUS MENTAL INTERACTION WITH THE INTENT OR IMPORTANCE OF THE OBJECT.

THE PATH OF MORE NATURAL MATERIALS IS MORE HARMONIOUS WITH THE ENVIRONMENT. YET STILL OF ENOUGH CONTRAST AND RIGIDITY TO DENOTE ITS EXISTENCE.



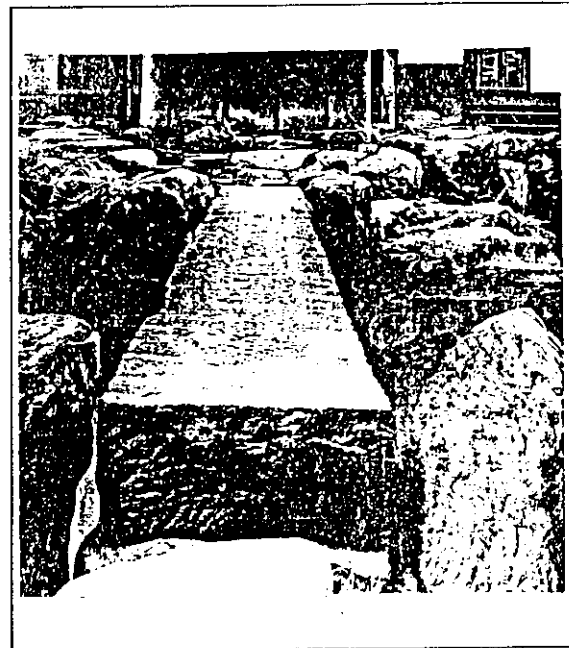
KATELRA

"A PASSAGE THROUGH A BARRIER BY A FRAMED OPENING"

MYSTERY IN THAT ONE SEES THE PATH GO THROUGH THE WALL BUT DOES NOT KNOW WHERE IT GOES

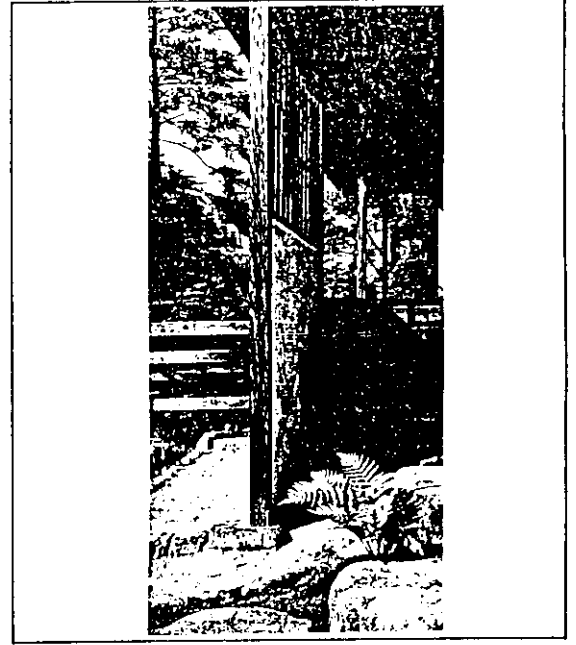
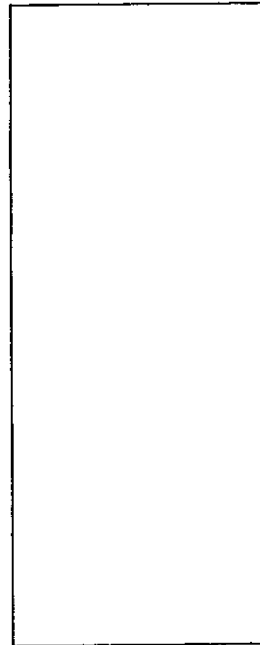
THE BARRIER APPEARS TO BE SEPARATING TWO FAIRLY DIFFERENT TYPES OF ENVIRONMENT

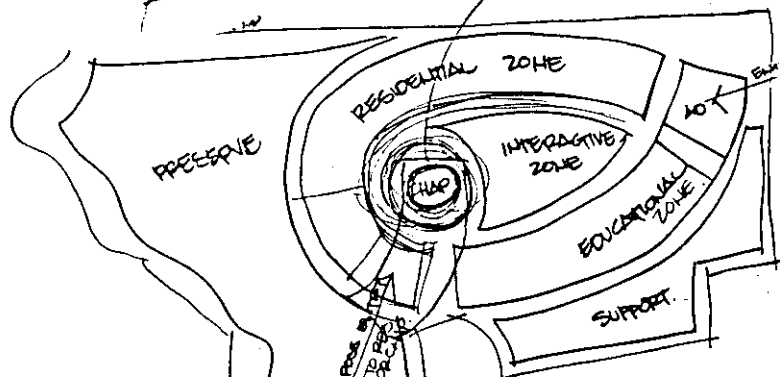
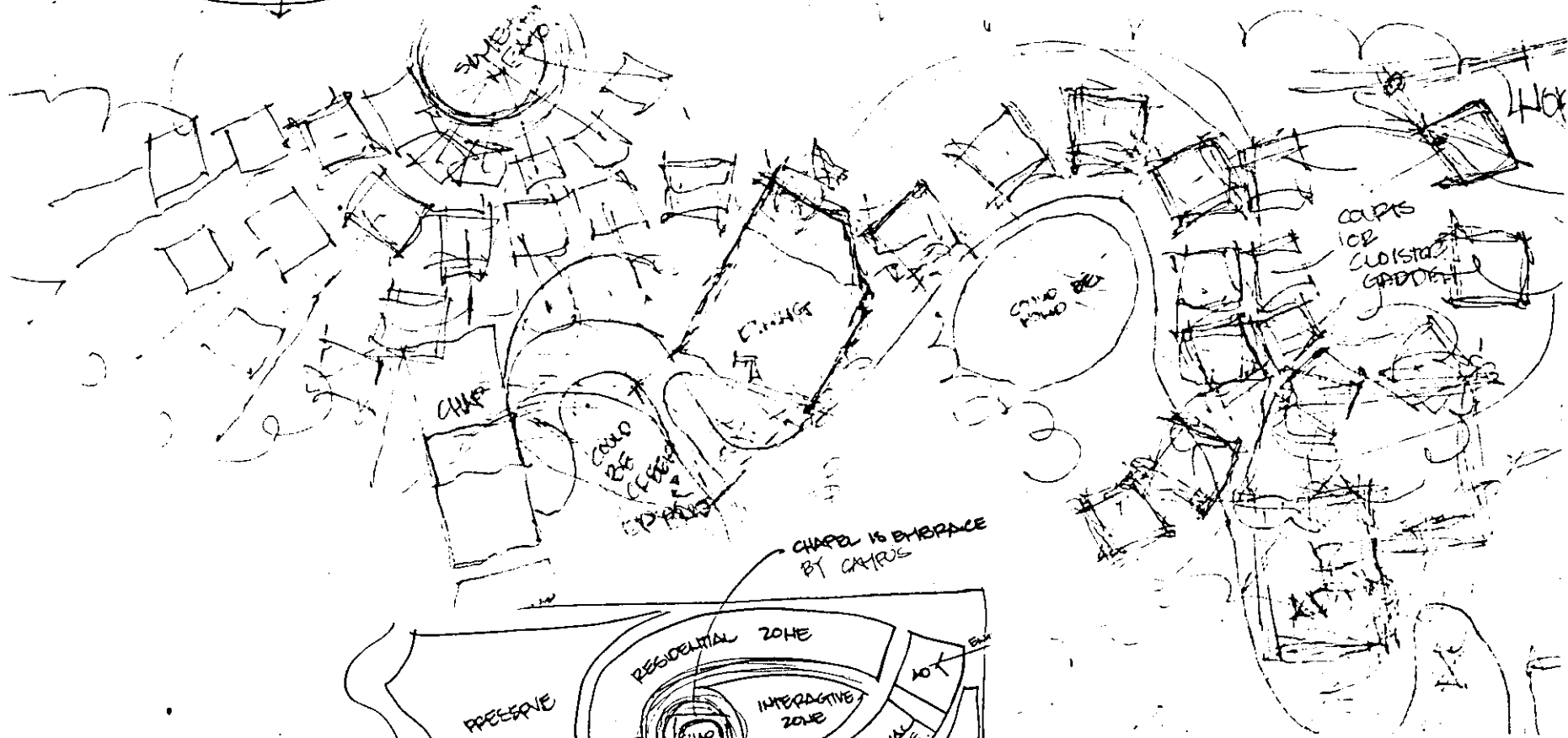
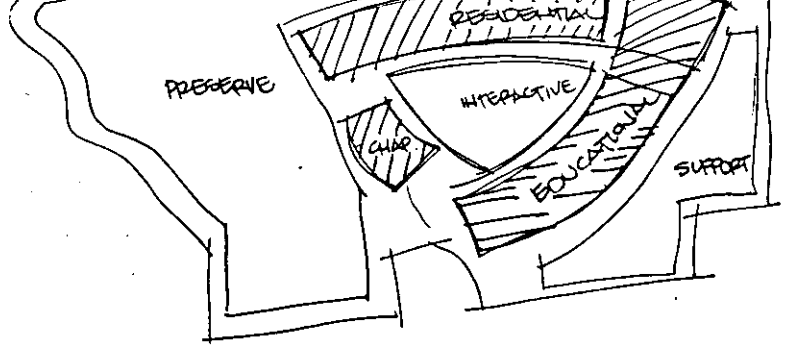
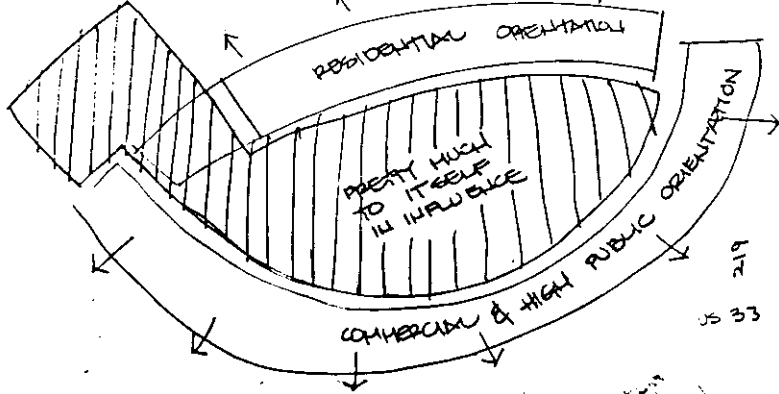
SUBTLETY OF PATH IN ENVIRONMENT ALLOWS PERSON TO FEEL AS IF HE MAY BE DISCOVERING IT



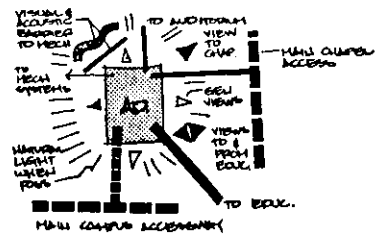
KATELORA
"THE SUBTLE
TRANSITION OF LAND
TO WATER"

NO DISTINCT STOP
TO LAND AND
START OF WATER
THUS SOME RATIONAL-
IZATION MUST EXIST
TO MAKE DISTINCTION

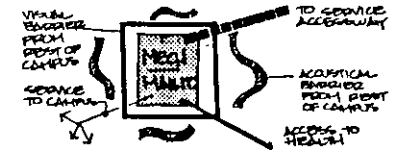




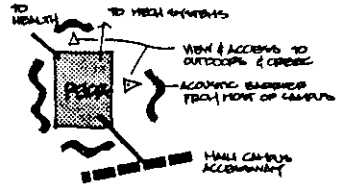
ADMINISTRATIVE



MECHANICAL / MAINT.



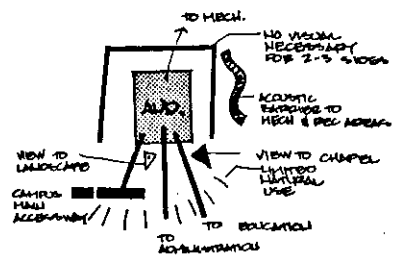
RECREATIONAL



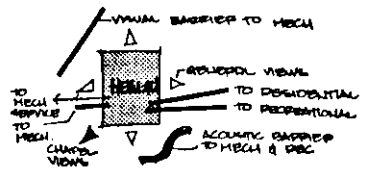
LIBRARY

ELEMENT PHYSICAL RELATIONSHIPS

AUDITORIUM



HEALTH



SPACES

"NARTHEX"

"SALVATORY"

WAVE - ANGLES
ALTAR - TRANSEPT?
APEX
CHOIR / NARTH.

MILITARY PREP AREAS
SACRIFICE
- WAVE ETC

CHORAL PREP AREAS
CORRS?
RESTROOM?
EXTERIOR CHAPEL?
BALCONY?

ACTIVITIES

WORSHIP
MONODUAL
COMMUNAL

CHORAL/MUSIC
SINGING
INSTRUMENTAL

FELLOWSHIP - MEETING &
SPEERING ETC.

PROCESSION W.
LESS FORMAL
ENTRY

SACRAMENTS
BAPTISM
HOLY COMMUNION

WEDDINGS

RITUALS
REFLECTION

QUALITIES

MYSTERIOUS
REVEALING
DISCOVERY
SUBTLE / INTERPRETIVE
PEACEFULNESS
REFLECTIVE - CONTEMPLAT-
IVE

HYPEROLIC - EXTREMELY
RESPONSIVE TO
SUGGESTION OF SELF
AND/OR OTHERS

NON-DISTRACTIVE (RECOVERING)
EXPRESSIVE OF A GREATER
POWER'S PRESENCE

AWARENESS OF SPECIFIC
"PIECES" OF ENVIRON.
AS OPPOSED TO WHOLE

A PEACEFULNESS
GOOD ACOUSTICS
REVERBERATION

USE OF LIGHT TO
HIGHLIGHT, DIRECT,
MYSTIFY...

HEAVENLY-LIKE
SYMBOLIC CONNECTION
TO HEAVENS

TRIUMPHANT
SAFETY
TRUTHFULNESS
MOST PART. OF STRUCTURE

USAGE PATTERNS - ETC

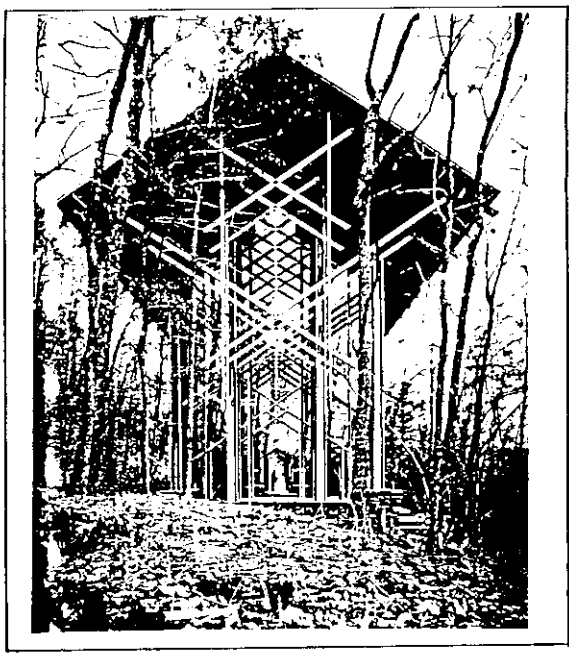
NOTES & SKETCHES & IMPORTANT FACTS

"METHODY'S GREATEST CONTRIBUTION TO CHRISTIAN WORSHIP, THEREFORE, IS PROBABLY THE TREMENDOUS IMPULS GIVEN TO HYMN SINGING IN THE ENGLISH LANGUAGE, ALONG WITH ITS OWN RICH BODY OF HYMNS."

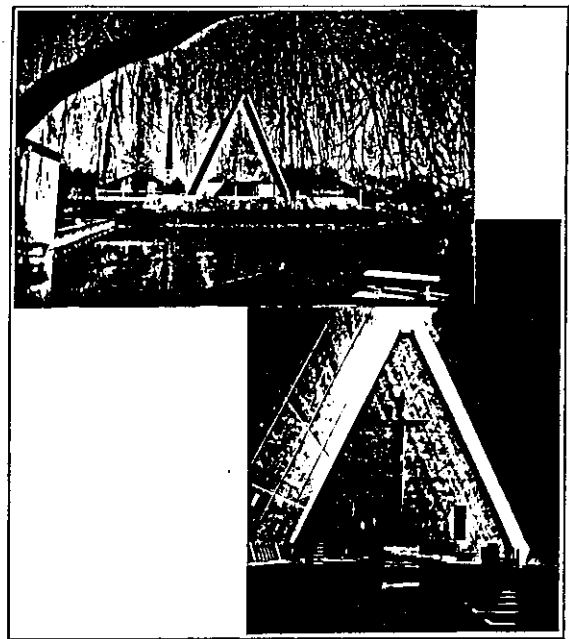
STRONG SACRAMENTALISM (i.e. WESLEY)
ESPECIALLY LORD'S SUPPER.

"WESLEY BELIEVED THAT SALVATION IS FREE TO ALL PEOPLE, NOT JUST TO A SELECT FEW, AND THAT GOD'S GRACE IS EQUAL TO EVERY NEED. SUCH A DOCTRINE APPEALED TO MANY PERSONS IN ENGLAND AT THAT TIME, ESPECIALLY TO THE POOR AND OPPRESSED."

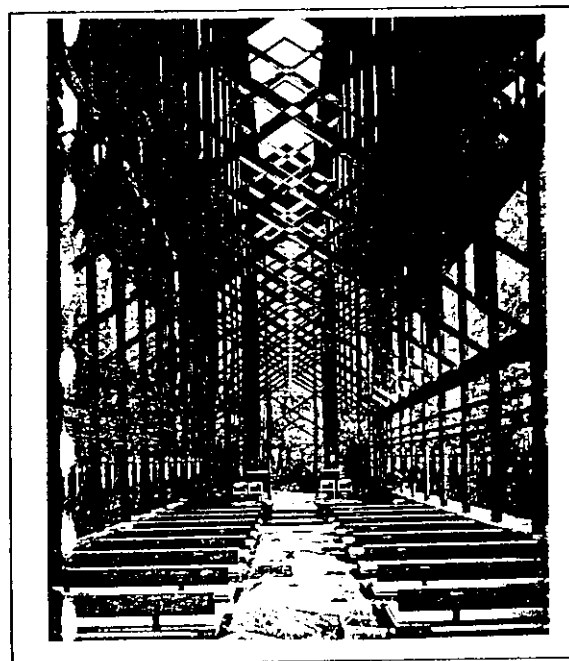
THORNCROWN
CHAPEL
E. FAY JONES



CONCORDIA THEO.
SEMINARY - CHAPEL
BERD GARDHJEN

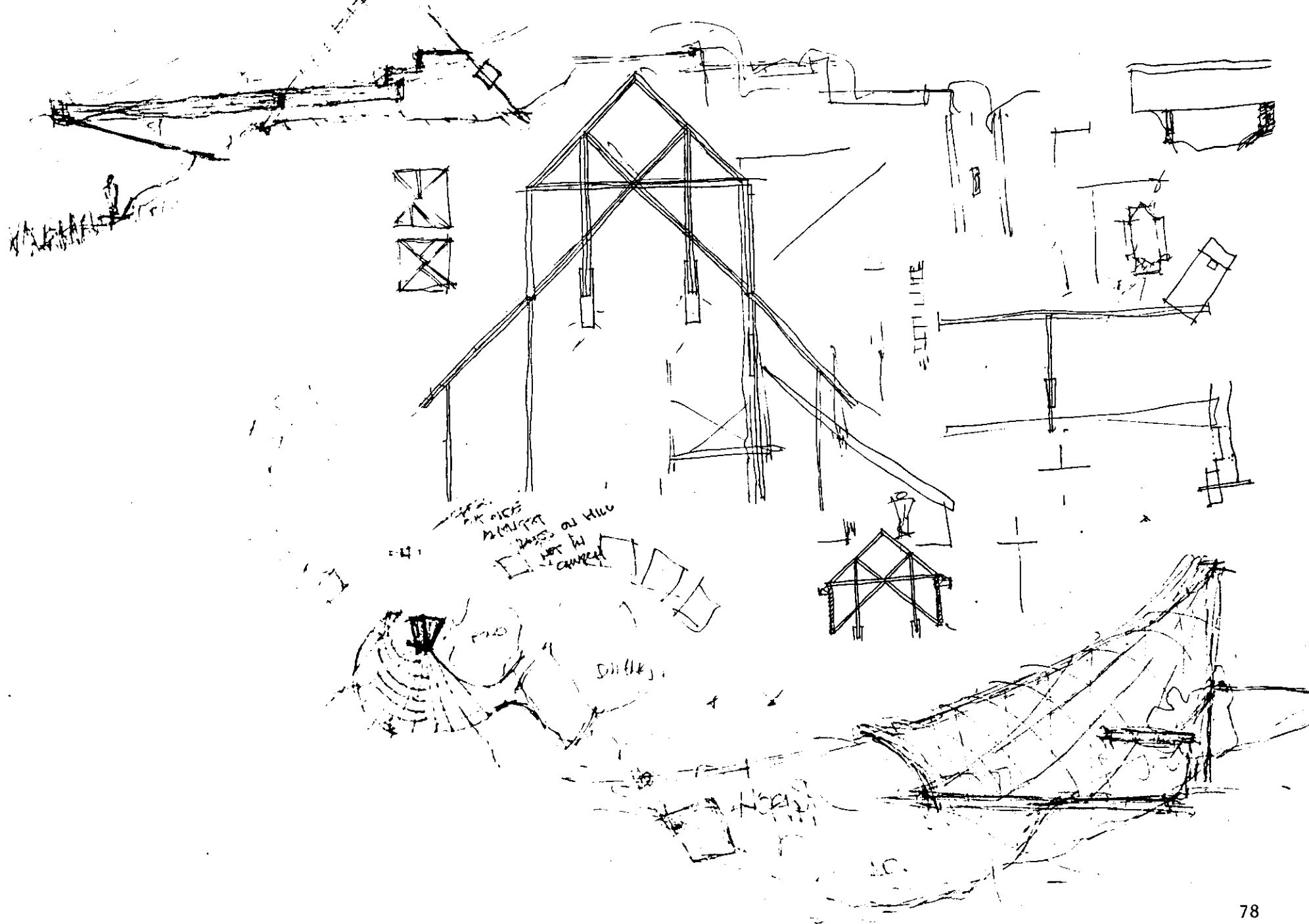


THORNCROWN
CHAPEL
E. FAY JONES



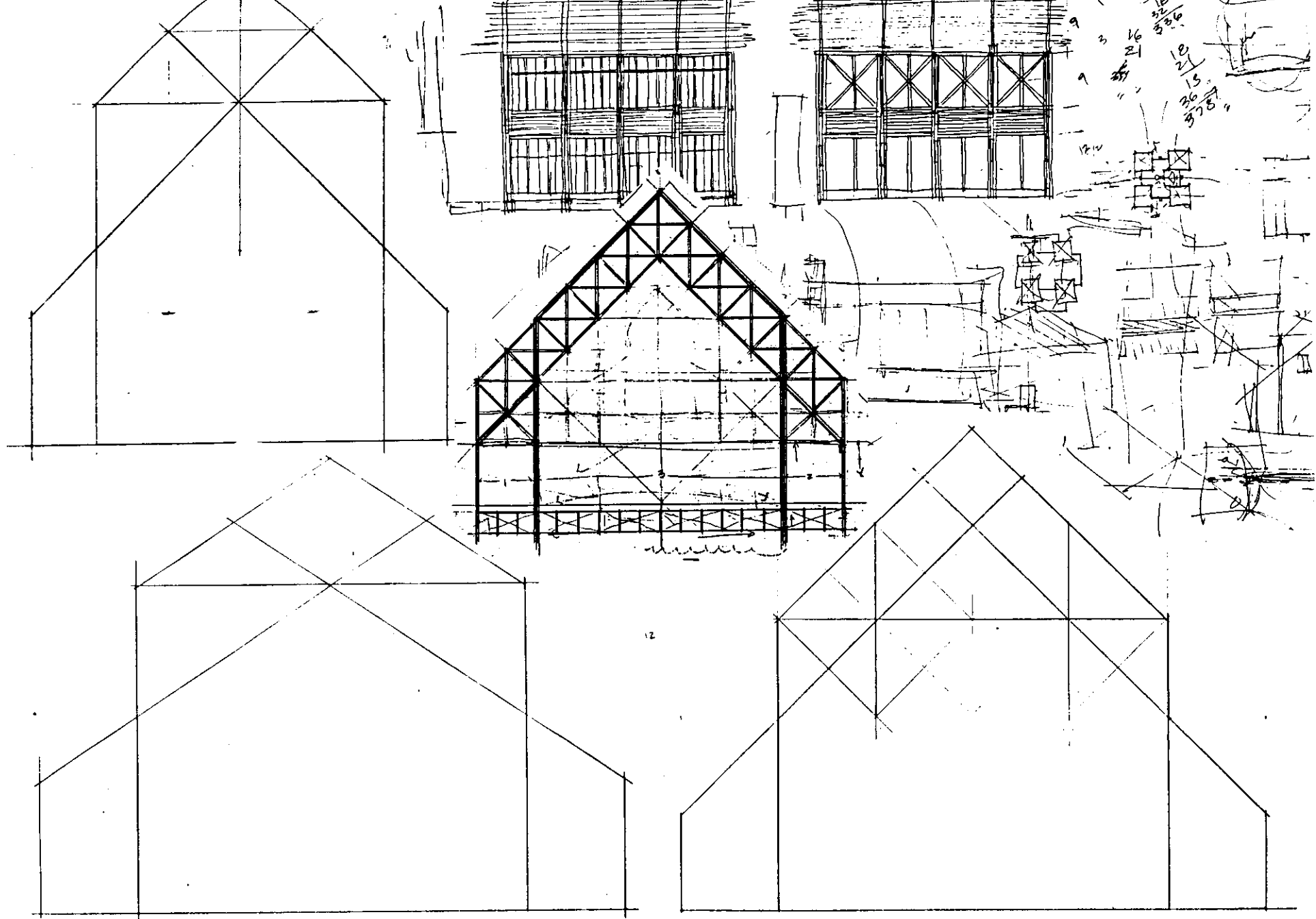
WINCHESTER CATH.





PASS ON HILL
CANTILEVER

ELECTRICAL

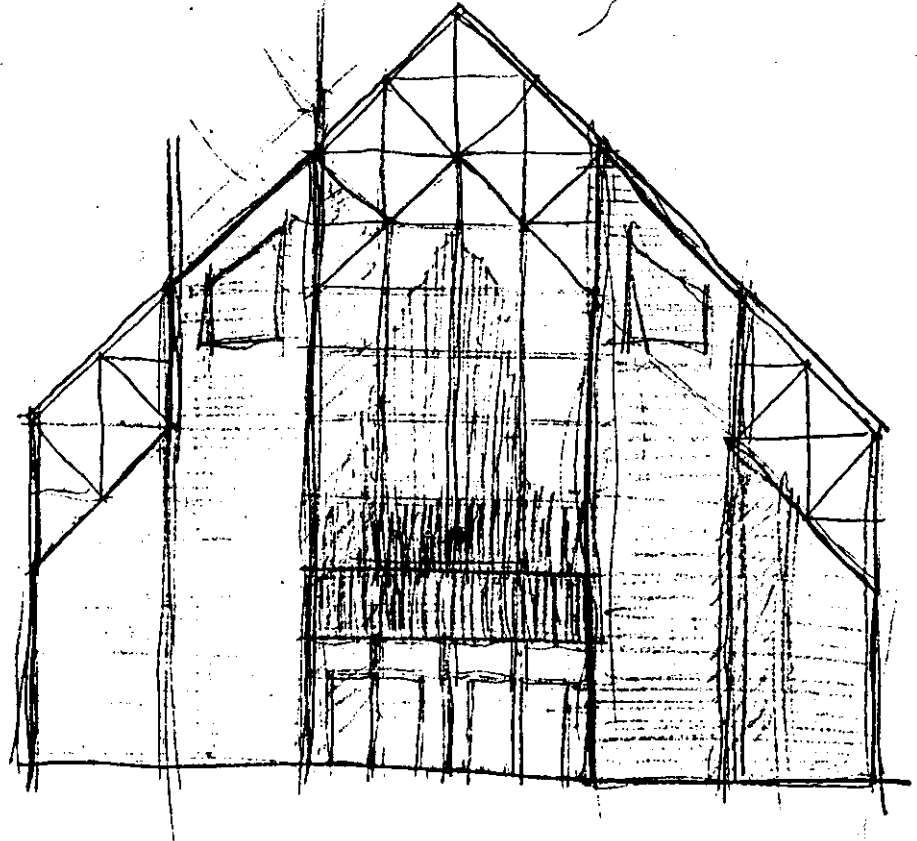
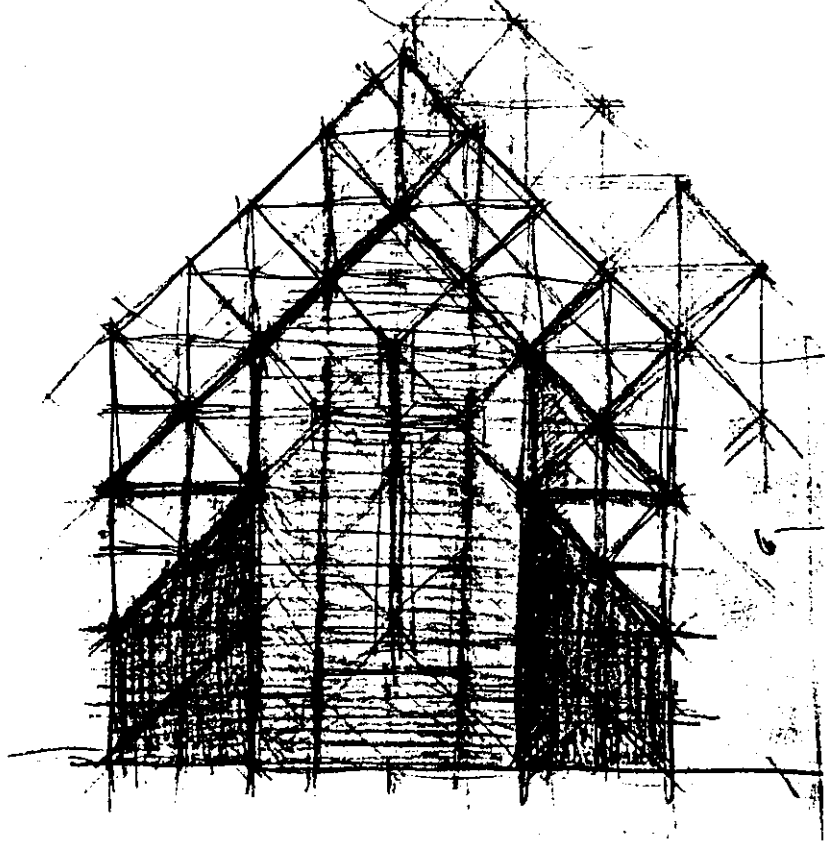
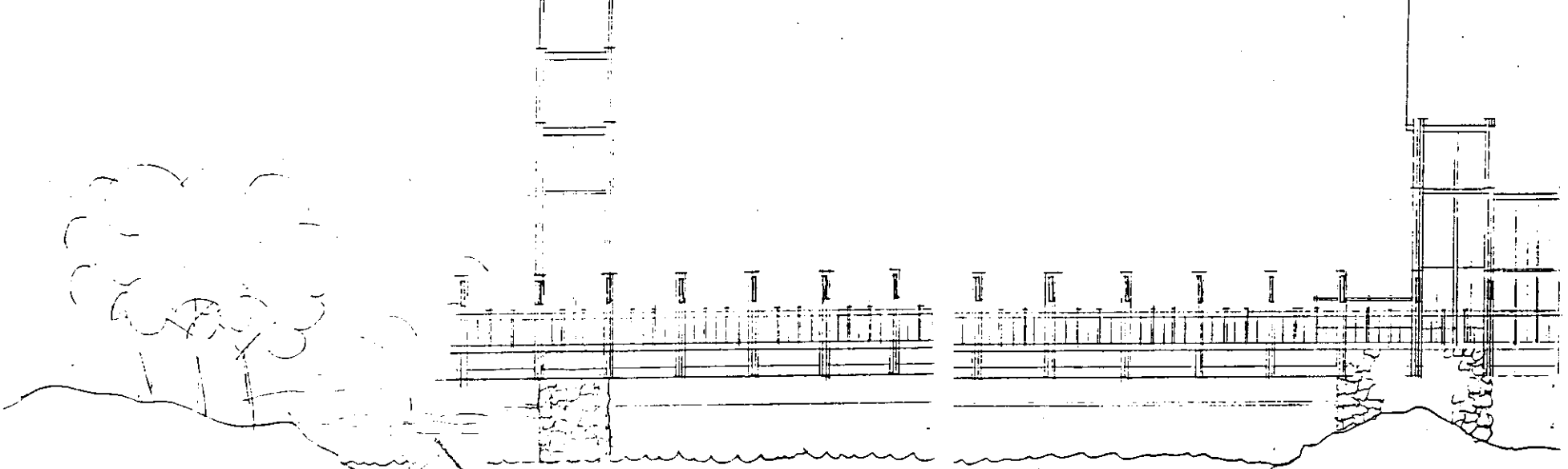


1

26

9

79



SPACES

ENTRY(S)
 OPEN DINING
 SEMI-PRIVATE DINING
 SMALL GROUPS
 BANQUETS
 PRIVATE DINING
 PROB. NOT AS IMPORT.
 KITCHEN & PREP AREAS
 STORAGE
 DISHES/CLEAN-UP
 PREP
 RECEIVING DOCK
 RESTROOMS
 EXTERIOR DINING?
 COFF.

ACTIVITIES

EATING
 FELLOWSHIP
 COMMUNITY
 AMBASSADORS OF
 OTHERS
 CENTRAL
 PRAYER
 RITUALISTIC
 MOMENTS OF
 RECEIVING &
 EATING FOOD ETC
 BANQUET
 POSS. MULTI-USE
 FOR: MEETINGS,
 CONVO'S, DANCE,
 PARTIES, ETC.
 COOKING
 CLEANING
 STACKING

QUALITIES

WELCOMING/INVITING.
 CENTRAL
 FELLOWSHIP &
 COMMUNITY
 "PEOPLE & GOD CENTER-
 ED"
 FRIENDLY
 OPEN/AIRY
 BOTH UTILITARIAN
 AS WELL AS
 EXPRESSIVE,
 SYMBOLIC AND
 ARTISTIC.
 COMFORTABLE

USAGE PATTERNS, ETC.

3 MAJOR TIMES
 DAILY + INTERMITTENT
 SNACK LINE.
 ENTRY @ MAIN PASS.
 LOCATIONS FUNNELED
 TO SINGULAR SERVING
 LINE(S)
 DISTRIBUTION INTO
 DINING AREA.
 PRAYER
 EAT & CONVERSE
 CLEAN-UP
 MORE CONVERSATION
 OR LEAVE.
 (SEE ~~THIS~~ FOR
 SCHEMATIC LAYOUT
 OF ENTIRE DINING
 BASIC USE PATTERN)

NOTES, SPECIFICATIONS, & IMPLEMENTATION

NUMEROUS BIBLICAL REFERENCES TO
 FOOD & DINING: LORDS SUPPER
 WESLEY "LOVE OF GOD DEMONSTRATED
 THROUGH LOVE OF NEIGHBOR"
 CAFETERIA-STYLE
 FELLOWSHIP - A COMMUNITY OF INTEREST,
 ACTIVITY, FEELING, OR EXPERIENCE.
 THE QUALITY OF BEING COMRADELY

DINING - NOTES

FORMAL LANGUAGE * 171 COMMUNAL EATING

"WITHOUT COMMUNAL EATING, NO HUMAN
 GROUP CAN HOLD TOGETHER."

SOCIETIES USE FOR: (WEDDING/CHRISTIAN)
 HOLY COMMUNION,
 WEDDING FEASTS,
 BIRTHDAY PARTIES,
 CHRISTMAS DINNER,
 IRISH WAKE,
 FAMILY EVENING MEAL

HAS THE POWER TO BIND PEOPLE
 IN A COMMON ACTIVITY IN WHICH
 ALL NEED FOR PHYSICAL EXISTENCE

IT DRAWS PEOPLE TOGETHER AT
 ESTABLISHED TIMES AND THEY
 USUALLY LEAVE MOST ALL ELSE
 BEHIND TEMPORARILY.

EATING TOGETHER IS A SIGN OF
 FRIENDSHIP.

ALL GATHER AROUND A COMMON
 ELEMENT/SYMBOL, THE TABLE,
 THUS MAKING IT A CENTER
 OF "FAMILY" LIFE.

"COLUVINIUM" - "A MYSTERY OF THE
 SHARING OF LIFE - A MYSTERY
 IN WHICH GUESTS PARTAKE OF
 THE GOOD THINGS PREPARED
 AND GIVEN THEM BY THE LOVE
 OF THEIR HOST, AND IN WHICH
 THE ATMOSPHERE OF FRIENDSHIP
 AND GRATITUDE EXPANDS INTO
 A SHARING OF THOUGHTS AND
 SENTIMENTS, AND ENDS IN COM-
 MON REJOICING" COMMUNAL MEALS

THE DINING GIVES A SENSE OF
 "MEMBERSHIP."

WAY OF MEETING OTHERS THROUGH
 A COMMON BOND.

THE THREE WAYS WE MEET OTHERS
 IN TODAY'S SOCIETY:

1. THE PROCESS HELD ENTIRELY IN
 THE OVERLAP OF THE HUMAN GROUPS
 IN SOCIETY, AND THE WAY A PERSON
 CAN PASS THROUGH THESE HUMAN
 GROUPS, EXPANDING HIS ASSOCIATIONS.
2. THE PROCESS CAN ONLY TAKE PLACE
 IF THE VARIOUS HUMAN GROUPS IN
 SOCIETY POSSESS 'GROUP TERRITORIES'
 WHERE MEETING CAN TAKE PLACE.
3. THE PROCESS OF MEETING SEEMS
 TO DEPEND ESPECIALLY ON

COMMUNAL EATING AND DRINKING AND
 THEREFORE TAKES PLACE ESPECIALLY
 WELL IN THOSE GROUPS WHICH HAVE
 AT LEAST PARTLY INSTITUTIONALIZED
 COMMON FOOD AND DRINK."

"GIVE EVERY INSTITUTION AND SOCIAL
 GROUP A PLACE WHERE PEOPLE
 CAN EAT TOGETHER. MAKE THE
 COMMON MEAL A REGULAR EVENT.
 IN PARTICULAR, START A COMMON
 MEAL AROUND A COMMON TABLE
 (NOT OUT OF BAGS OR BOWLS) BECOMES
 AN IMPORTANT, COMFORTABLE, AND
 DAILY EVENT WITH ROOM FOR
 INVITED GUESTS...."

POSSIBLY INVOLVE EVERYONE
 IN PREPARATION AND CLEAN-UP
 AT SOME TIME FOR FURTHER
 INVOLVEMENT.

IN LARGE SITUATIONS, BREAK
 IT INTO SMALLER GROUPS
 OF 12 OR UNDER.

FORMAL LANGUAGE * 102 EATING ATMOSPHERA

"WHEN PEOPLE EAT TOGETHER,
 THEY MAY ACTUALLY BE

DINING - NOTES

TOGETHER IN SPIRIT - OR THEY
 MAY BE FAR APART. SOME
 ROOMS INVITE PEOPLE TO EAT
 LEISURELY AND COMFORTABLY
 AND FEEL TOGETHER, WHILE
 OTHERS FORCE PEOPLE TO
 EAT AS QUICKLY AS POSSIBLE
 SO THEY CAN GO SOMEWHERE
 ELSE TO RELAX."

"PUT A HEAVY TABLE IN THE
 CENTER OF THE EATING SPACE -
 LARGE ENOUGH FOR THE
 WHOLE FAMILY OR THE GROUP
 OF PEOPLE USING IT. PUT A
 LIGHT OVER THE TABLE TO
 CREATE A POOL OF LIGHT OVER
 THE GROUP, AND ENCLOSE
 THE SPACE WITH WALLS OR
 WITH CONTRASTING DARKNESS...."

MAKE THE GROUP AND TABLE
 THE CENTER.

THE LIGHTING HOLDS PEOPLE
 TOGETHER, BUT GENERAL
 LIGHTING DISTRACTS AND
 CAUSES A BREAK DOWN.

VERY ISOLATING
SPACE DOMINATION
INDIVIDUAL CONCENTRATION
WASTE OF
SPACE
LACK OF
INTIMACY
HUMAN IS BELTLED AND
INSIGNIFICANT.



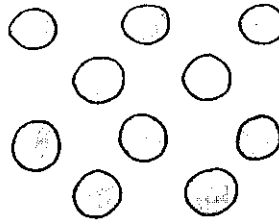
SLIGHTLY SPACE
DOMINATED
INTIMACY
BETWEEN
GROUP
MEMBERS
POSSIBLY
MORE DIFFICULT
TO ACHIEVE
SOMEWHAT ISOLATING



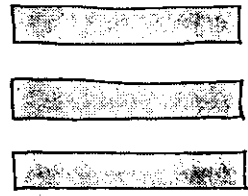
GOOD HARMONY OF
USERS TO SPACE
INTIMACY



HIGH INTERACTION AT & BETWEEN



LOW INTERACTION AT & BETWEEN



BETTER BUT STILL
SPACE DOMINATED
MORE HUMAN IN SCALE



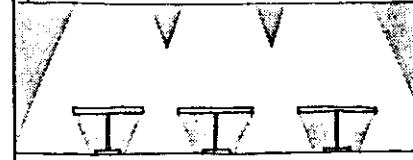
PRETTY GOOD
GOOD COMFORT LEVEL
MORE HARMONY OF
GROUP TO
SPACE



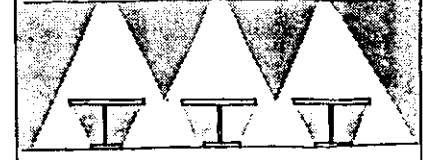
TIGHT
SOMEWHAT THREATENING



LIGHT AS A SPACE DEFINER
HIGHER CHANCE FOR DISTRACTION
GENERAL LARGER INTERACTION AREA



LIGHT AS A SPACE DEFINER
HIGHER CHANCE OF INTIMACY
SPOT TABLE-CENTERED INTERACTION



VERY INTIMATE
HARMONY OF HUMAN
AND SPACE



TOO TIGHT
UNCOMFORTABLE
THREATENING SPACE

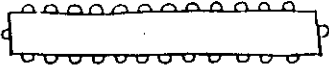


HUMAN DOMINATED
THREATENING
STRESSFUL

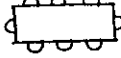


DINING - INTERACTION LEVELS @ TABLES

VERY SEGREGATING
AND HIERARCHICAL
IT BRINGS ALL TOGETHER
AT A COMMON PLACE,
BUT DIFFICULT FOR
INTERACTION OF
EVERYBODY
INTIMIDATION AND THREATENING.



STILL HIERARCHICAL
BUT MORE INTIMATE
AND CONDUCIVE TO
INTERACTION AT BOTH
LARGE AND SMALL
LEVELS



VERY INTERACTIVE,
LOW SEGREGATION
AND/OR HIERARCHY
EQUAL PARTICIPATION
ALLOWABLE.
GROUP-
CENTERED

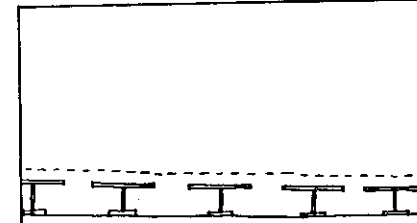


MOST INTIMATE
AND DIRECTLY
INTERACTIVE

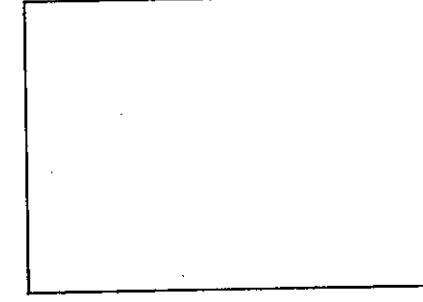
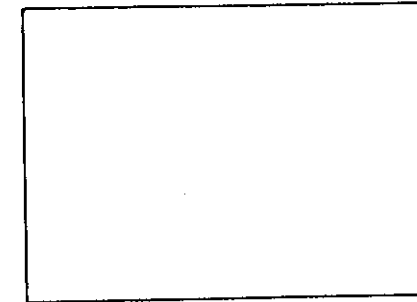
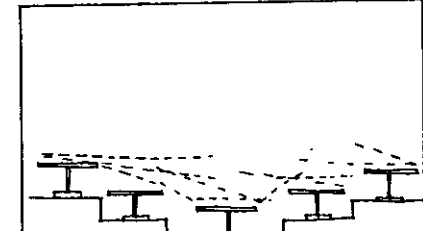


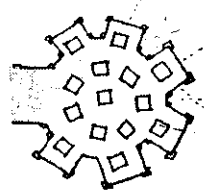
DINING - INTERACTION BETWEEN TABLES

LESS INTERACTIVE CHOICES - LIMITING



MORE INTERACTION LESS SEGREGATING

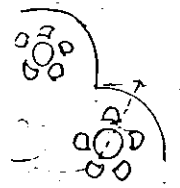
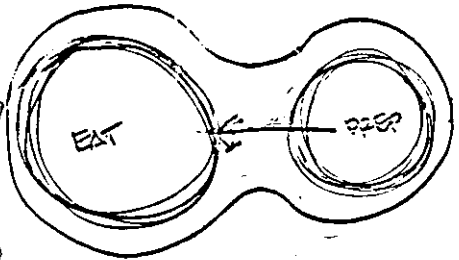
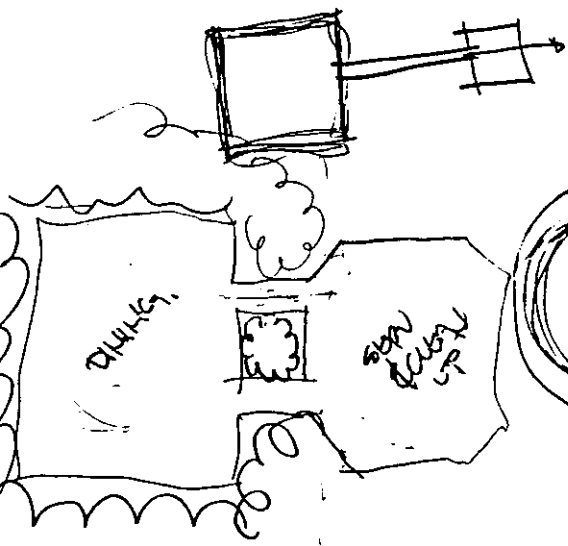




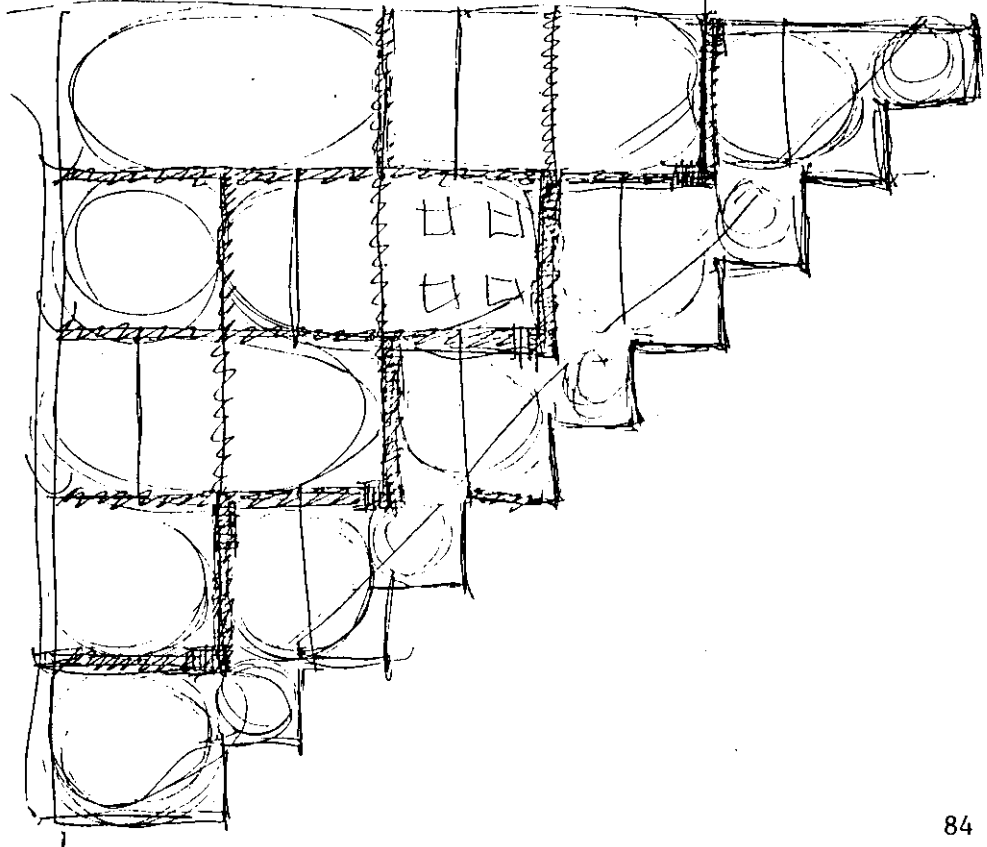
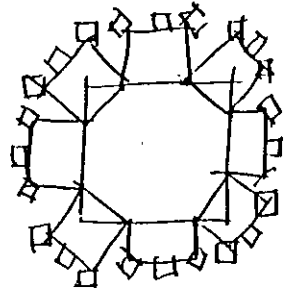
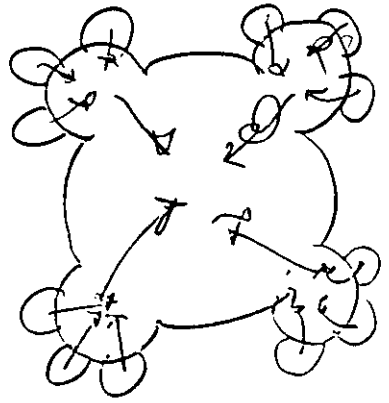
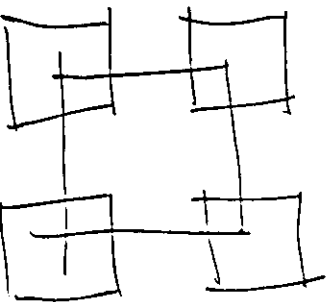
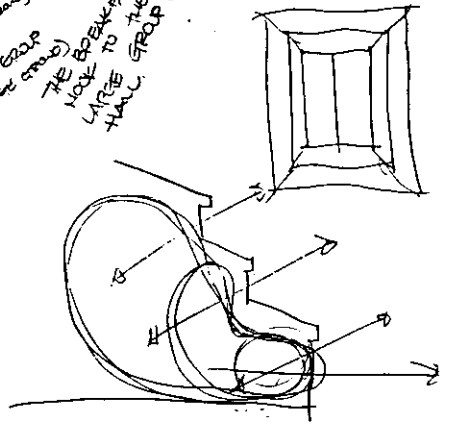
TRY TO PROVIDE FOR A SPACE WHICH IS COMFORTABLE FOR ONE PERSON, A SMALL GROUP, OR A LARGE GROUPING

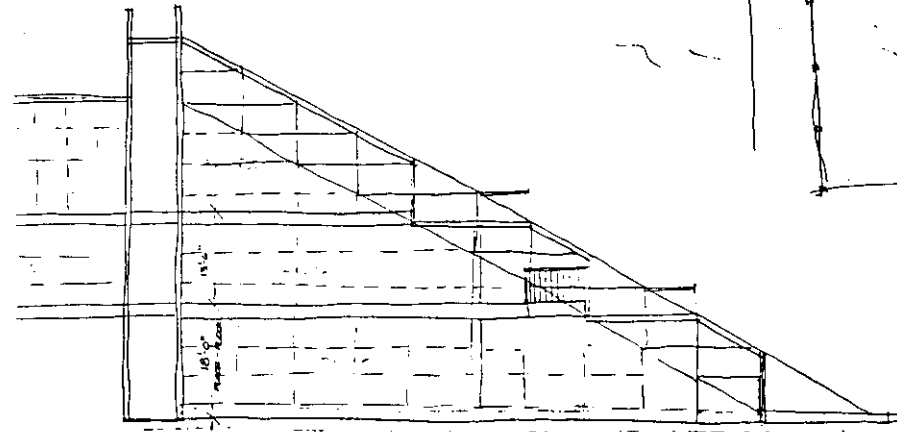
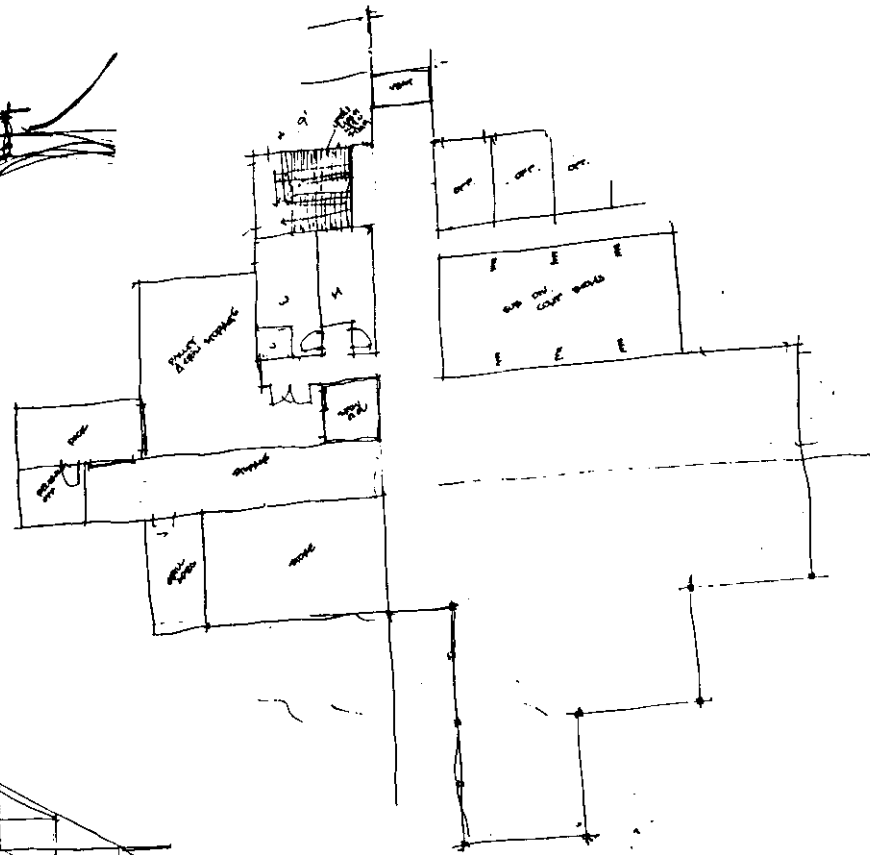
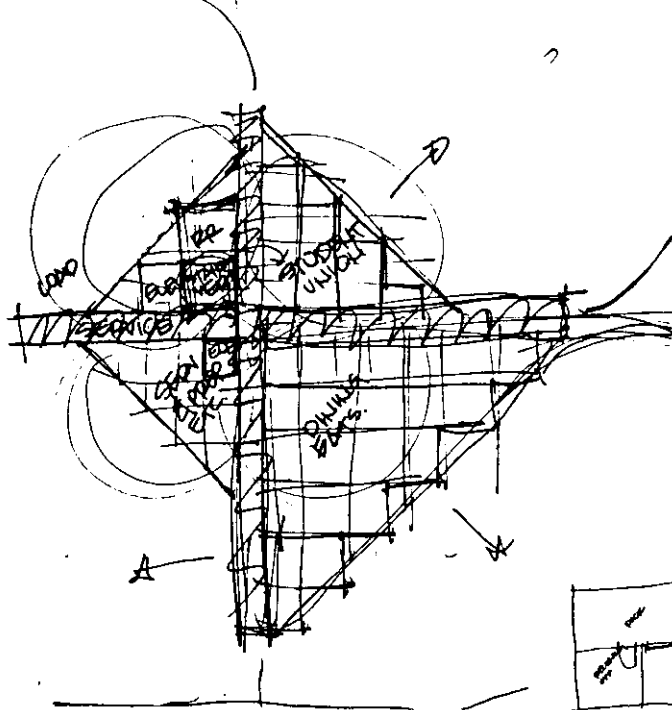
SEMI-ENCLOSURE FOR AN INDIVIDUAL OR COUPLE BUT ALSO OPEN TO LARGER AREA FOR GROUP INTERACTION. ALSO ALLOW FOR MORE INTERACTION WITH OUTSIDE ENVIRONMENT SO IN A INDIVIDUAL EXAMPLE, THE SPACE IS AN ENHANCER RATHER THAN THE OTHER PEOPLE

ALSO USE LIGHTING (ADJUSTABLE) TO CREATE THE VARIOUS USAGE LEVELS.



BREAKFAST
 1-2 PEOPLE GROUPS
 (small)
 LUNCH
 1-8 PEOPLE EACH GROUP
 (medium)
 4-5 PEOPLE EACH GROUP
 (large group)
 THE BREAKFAST
 MOVE TO THE
 HALL GROUP DINING





SPACES

HOUSING UNITS (INDIV.)
SINGLE
MALE
FEMALE
MARRIED
w/CHILDREN
w/o CHILDREN
FACULTY - VISIT & PERM.
GROUP SPACES (SMALL)
GROUP SPACES (LARGE)
COMMUNITY SPACES
OUTDOOR SPACES
INDIVIDUAL
COMMUNITY
UTILITERIAL SPACES
RESTROOMS / SHOWER
JANITORIES
LAUNDRIES
TRASH
KITCHENETS

ACTIVITIES

SLEEPING
STUDY
LIGHT RECREATION
TV
MUSIC (HOTEL & PLANT)
REFLECTION
PRAYER
SMALL GROUP OR
COUPLES MEETING,
SHARING ETC.
HYGIENE
SOME CHILDREN
ACTIVITY NEEDED
(POSS. 1 or 2
CLUSTERS DEDICATED
TO FAMILIES w/CHILD.)

QUALITIES

EXPRESSIVE OF INDIV.
&/OR FAMILY
COMFORTABLE
"HOMEY"
MULTIFUNCTIONAL
(ONLY ACTIVITY
UNIQUENESS OF
INDIVIDUAL w/
THE CONFORMITY
OF WHOLE THROUGHOUT
LESS LIMITATIONS
SHOULD OCCUR
IN INDIVIDUAL SPACES
PEACEFULNESS
AT QUE w/GOOD
SAFETY & SECURITY
SHOULD TRY AND
POSSESS SOME
MYSTERY TO
NOT ALLOW
HUMAN TO DOMINATE

USAGE PATTERNS, ETC.

USED PROXIMATELY
AFTER SUPPER TO
BEFORE NEXT DAY'S
BREAKFAST + OFF &
ON DURING DAY
DEPENDENT ON INDIV.
CIRCUMSTANCE
PROBABLY MORE
USE OF GROUP
& COMMUNITY
SPACES AFTER
DARK.

NOTES, SKETCHES, & IMPORTANT FACTS

SINGLES (MARRIED HAVE SIMILAR ARRANGEMENT)
(ALLOWS FOR MIX OF SEXES AND MARITAL STATUS)

NOTES - RESIDENTIAL - GENERAL

PATTERN LANGUAGE #138 SLEEPING TO THE EAST.

HUMAN ORGANISM HAS BIOLOGICAL
CLOCKS - RHYTHMS & CYCLES
IF WE ACT AGAINST THEM WE
CHANCE DISTURBING THEM AT
BOTH THE PHYSIOLOGICAL AND
EMOTIONAL LEVELS.

SLEEP IS AN IMPORTANT PART
OF THE CYCLE

"THE BODY REACHES ITS LOWEST
METABOLIC ACTIVITY IN THE
MIDDLE OF THE SUN'S LIGHT,
AT ABOUT 2 AM. IT SEEMS
VERY LIKELY, THEN, THAT THE
MOST NURISHING KIND OF
SLEEP IS A SLEEP WHOSE
CURVE MORE OR LESS COINCIDES
WITH THE CURVE OF METABOLIC
ACTIVITY - WHICH IS IN TURN
DEPENDENT ON THE SUN."

IF WOKEN DIRECTLY AFTER

REM. SLEEP, WE FEEL
MORE EXUBERANT, ENERGETIC
AND REFRESED THE WHOLE
DAY DUE TO HORMONES
INJECTED INTO THE
BLOOD STREAM DIRECTLY
AFTER REM. SLEEP.

THE ONLY WAY TO MAKE
SURE YOU WAKE UP
AT THE CORRECT TIME
IS TO WAKE UP NATURALLY
NOT BY CLOCK ETC.

THE SUN AND WARMTH
GENTLY WAKE YOU, AND YOU
WILL USUALLY ONLY BE
AWAKENED AFTER A DREAM.

THE SUN DOESN'T NECESS.
NEED TO ACQUAINT SHINE
ON YOU, JUST HAVING IT
IN THE ROOM, AND BEING ABLE
TO SEE OUT ARE JUST AS

NOTES - RESIDENTIAL - GENERAL

AFFECTIVE AT TIMES.

HAVE THE WINDOW LOOK OUT &
SOME OBJECT WHICH CHANGES
IN SOME WAY FROM SEASON
TO SEASON

PATTERN LANGUAGE #141 ARCH OF ONE'S
OWN.

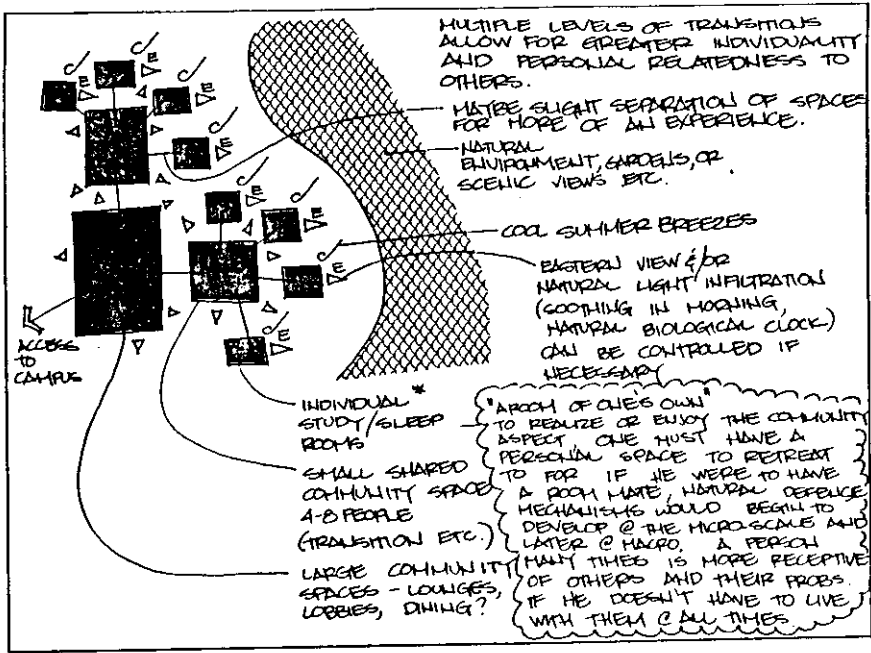
"NO ONE CAN BE CLOSE TO
OTHERS, WITHOUT ALSO HAVING
FREQUENT OPPORTUNITIES TO
BE ALONE"

IMPORTANT FOR INDIVIDUALIZATION
OF ONESELF AND STILL REMAIN
A MEMBER OF A GROUP.

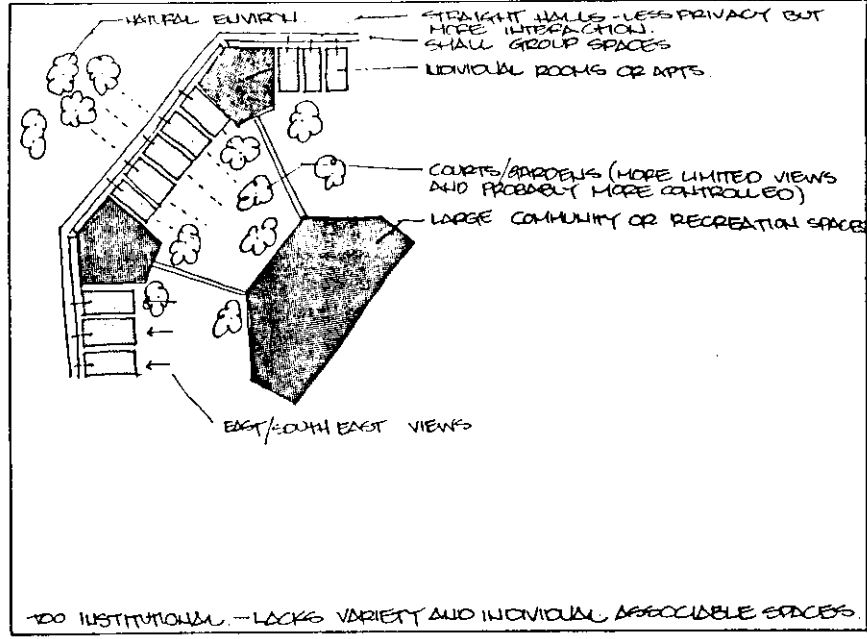
AFTER A WHILE OF NO INDIVIDUAL
EXPERIENCES, ONE BEGINS
TO RESIST RATHER THAN
EMPATHIZE WITH OTHERS.

MUST BE ABLE TO TOTALLY
ISOLATE ONESELF.

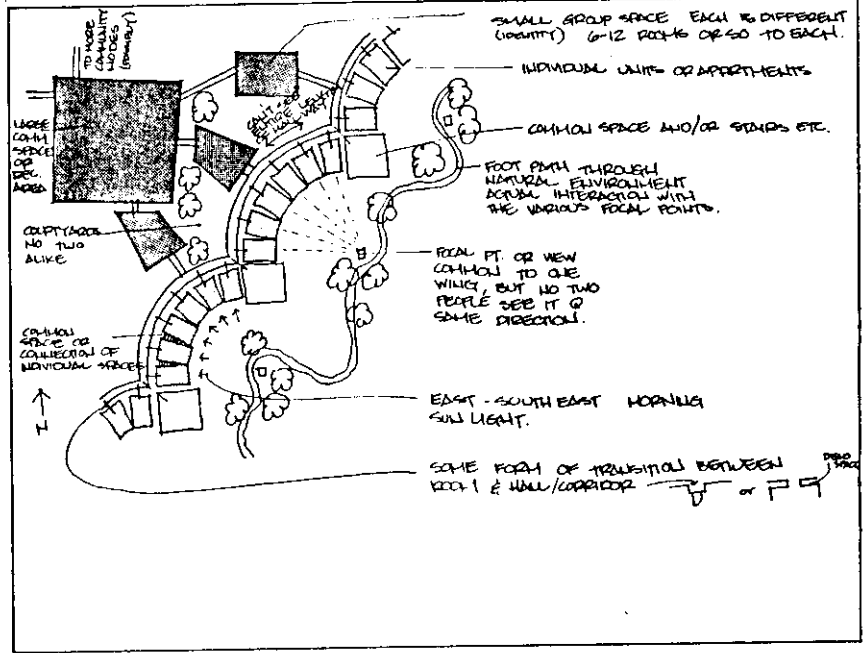
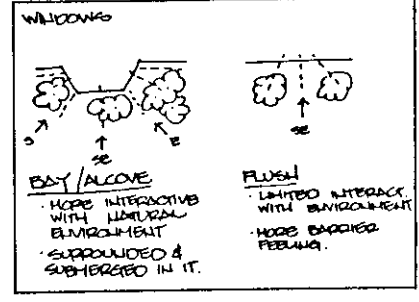
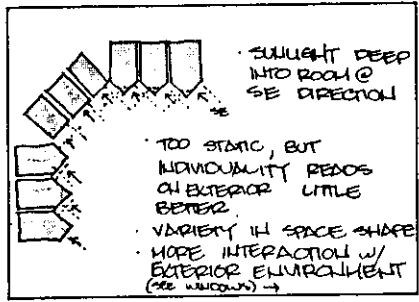
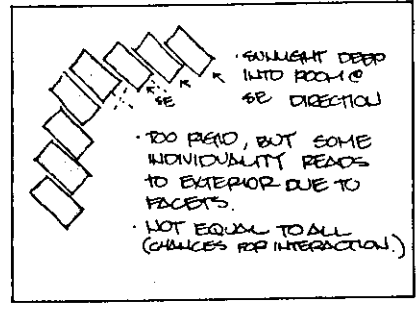
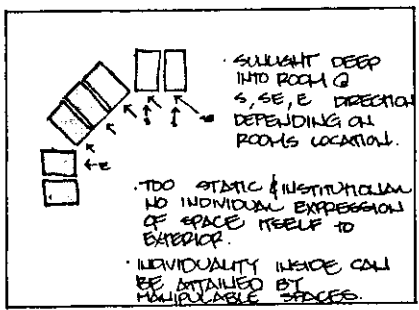
"A BEDROOM IS OFTEN THE
PERCHERY OF MOST OF
THESE ITEMS OF PERSONAL
PROPERTY AROUND WHICH
THE INDIVIDUAL BUILDS HIS
OWN SATISFACTIONS AND
WHICH HELPS HIM DIFFERENT.
DATE HIM FROM THE OTHER
MEMBERS OF THE INNER
CIRCLE OF HIS LIFE"

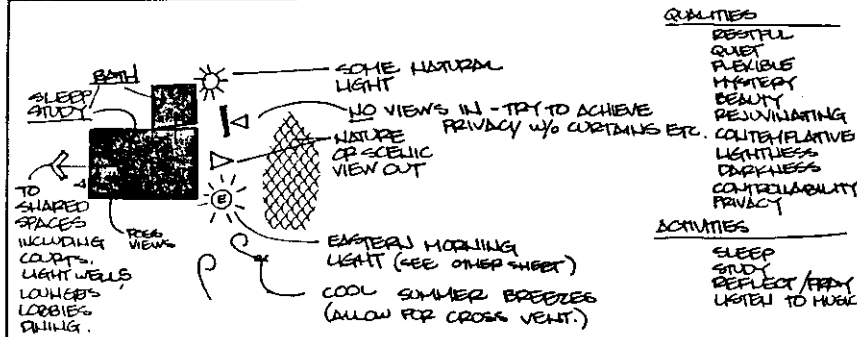
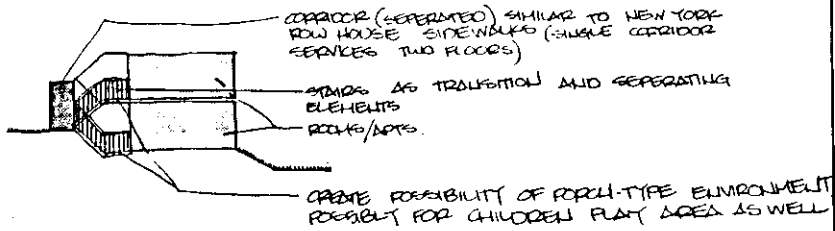


"A ROOM OF ONE'S OWN" TO REALIZE OR ENJOY THE COMMUNITY ASPECT ONE MUST HAVE A PERSONAL SPACE TO RETREAT TO FOR IF HE WERE TO HAVE A ROOM MATE, NATURAL DEFENCE MECHANISMS WOULD BEGIN TO DEVELOP @ THE MICRO-SCALE AND LATER @ MACRO. A PERSON MANY TIMES IS MORE RECEPTIVE OF OTHERS AND THEIR PROBS. IF HE DOESN'T HAVE TO LIVE WITH THEM @ ALL TIMES.



RESIDENTIAL COMPLEX



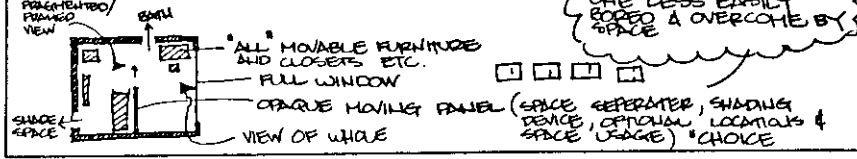


- QUALITIES**
- RESTFUL
 - QUIET
 - FLEXIBLE
 - INTEREST
 - BEAUTY
 - REVIVINATING
 - COUNTERBALANCE
 - LIGHTNESS
 - DARKNESS
 - CONTROLABILITY
 - PRIVACY

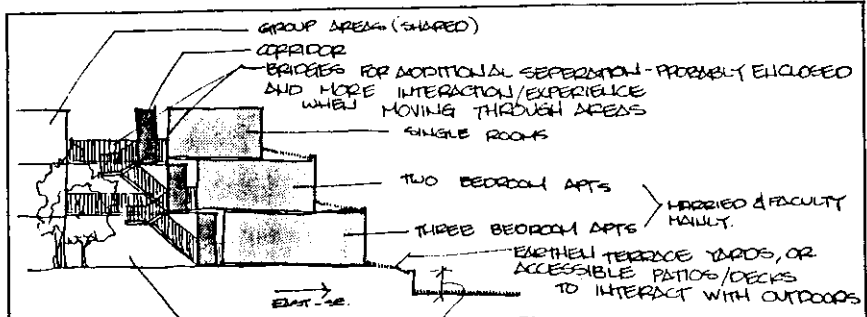
- ACTIVITIES**
- SLEEP
 - STUDY
 - REFLECT/FRY
 - LISTEN TO MUSIC

PROVIDE FOR "FLEXIBILITY" OF SPACE BY INDIVIDUAL (MANIPULATION) AS WELL AS DIVERSITY WITHIN SPACE.

SEPERATING OF SPACE ALLOWS FOR THE INDIVIDUAL TO NEVER BE ABLE TO SEE ENTIRE SPACE @ ONCE THUS ONE LESS EASILY SCOPED & OVERCOME BY SPACE



RESIDENTIAL-COMPLEX



NOTE COULD POSSIBLY TAKE ON FEEL OF A HILL SIDE, THUS BECOMING EVEN MORE INTEGRATED INTO SITE SETTING. ALSO BUILDING CHANGES WITH SEASONS!

NOTES-RESIDENTIAL-MARRIED

INTERNAL LANGUAGE = 130 COUPLES PEARL.

WITH CHILDREN

"THE PRESENCE OF CHILDREN IN A FAMILY OFTEN DESTROYS THE CLOSENESS AND THE SPECIAL PRIVACY WHICH A MAN AND WIFE NEED TOGETHER"

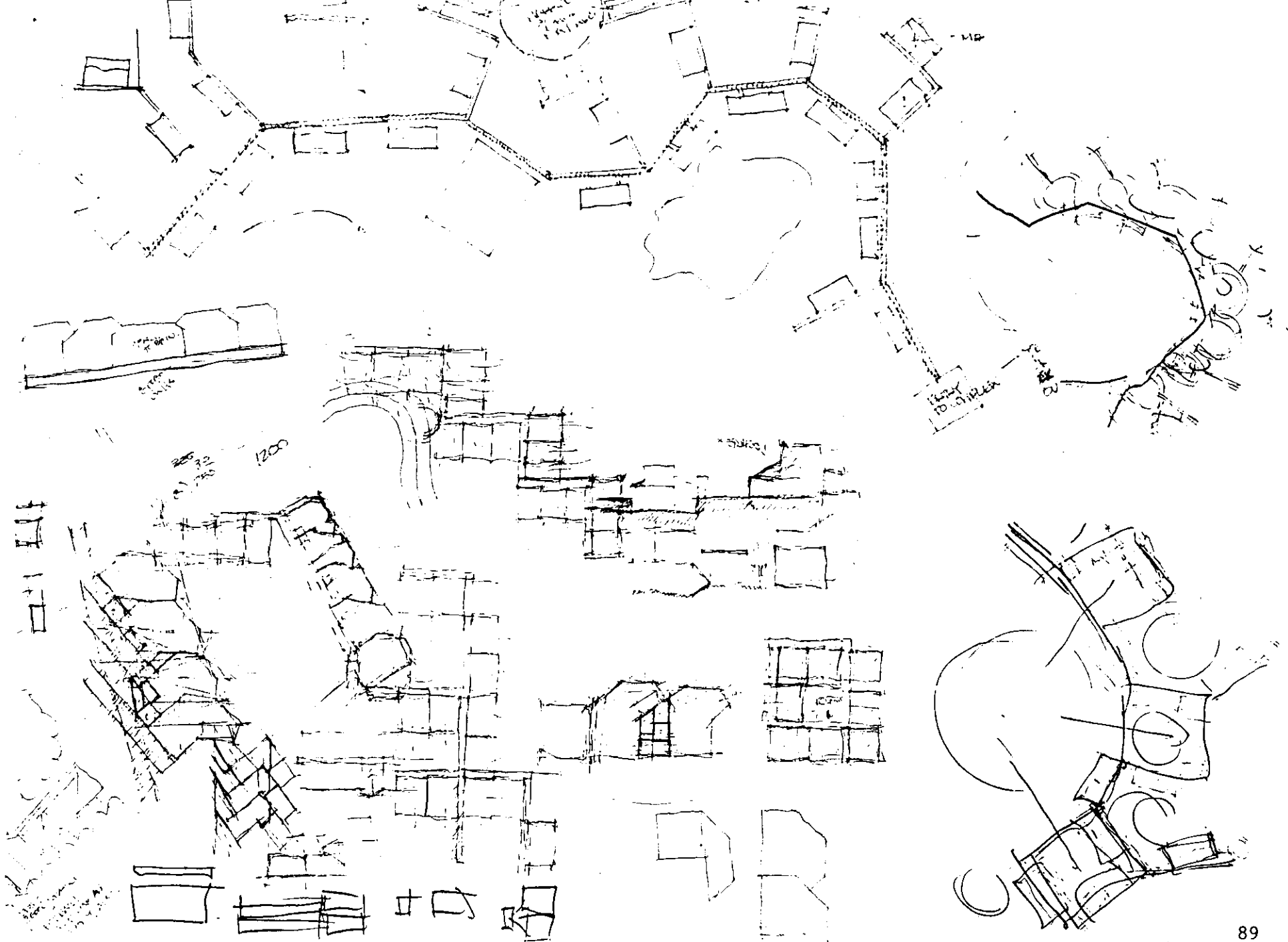
1. CHILDREN ARE ABLE TO RUN EVERYWHERE IN THE HOUSE, AND THEREFORE TEND TO DOMINATE ALL OF IT. NO ROOMS ARE PRIVATE.
2. THE BATHROOM IS OFTEN PLACED SO THAT ADULTS MUST WALK PAST CHILDREN'S BEDROOMS TO REACH IT.
3. THE WALLS OF THE MASTER BEDROOM ARE USUALLY TOO THIN TO AFFORD MUCH ACOUSTICAL PRIVACY.

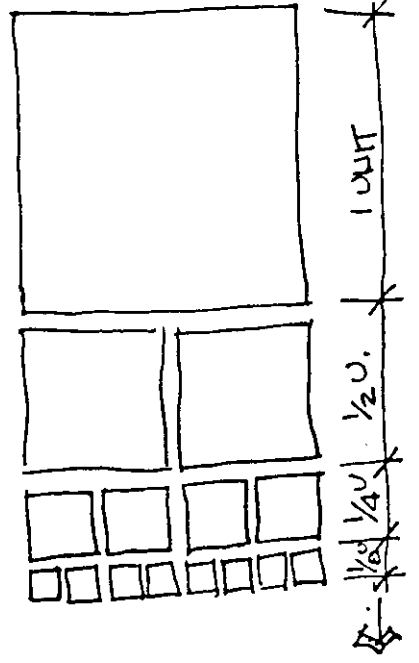
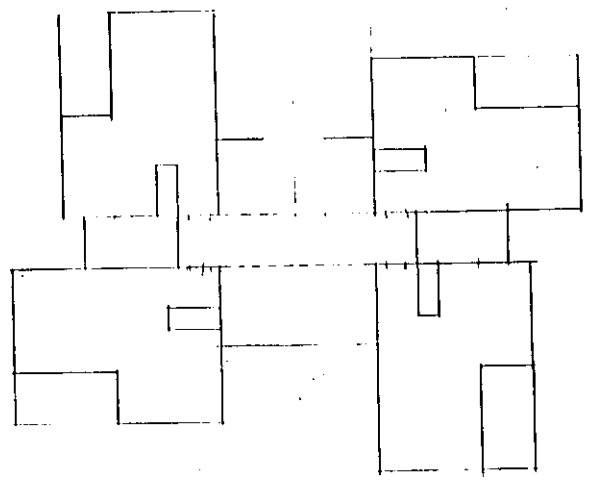
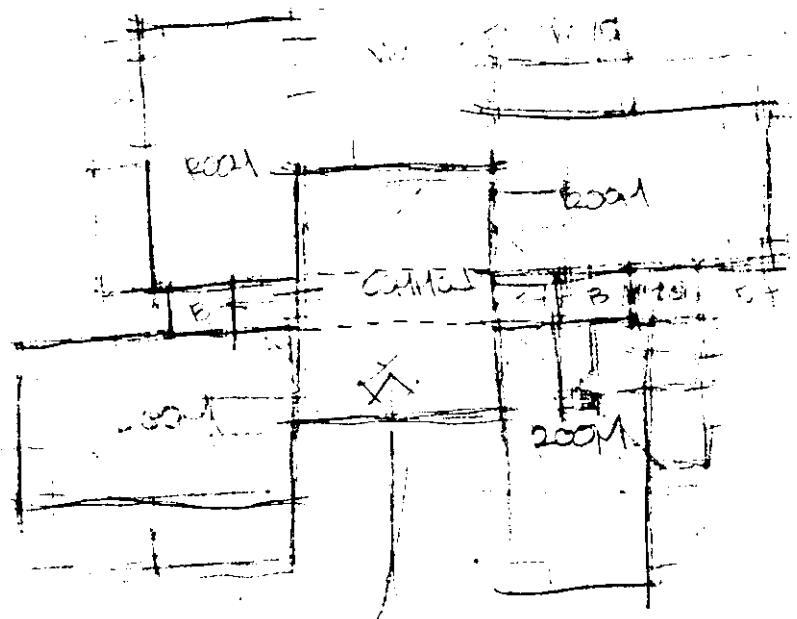
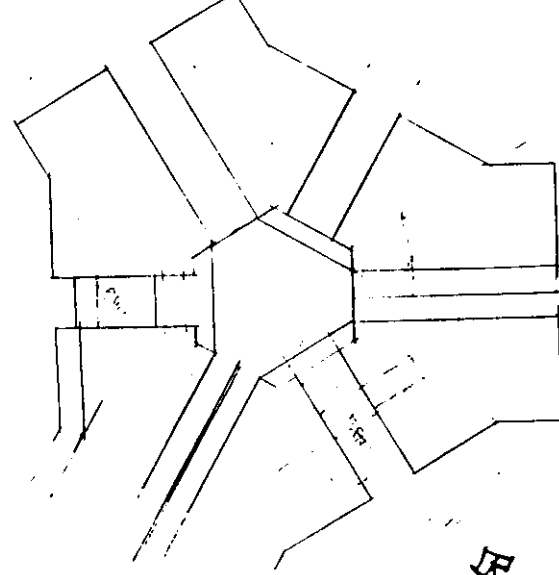
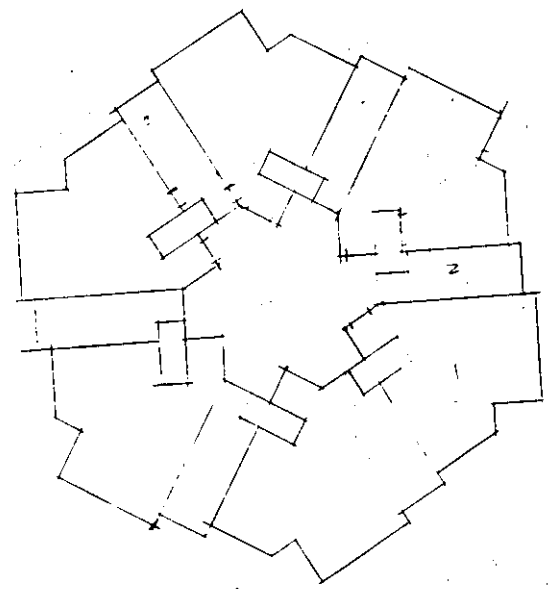
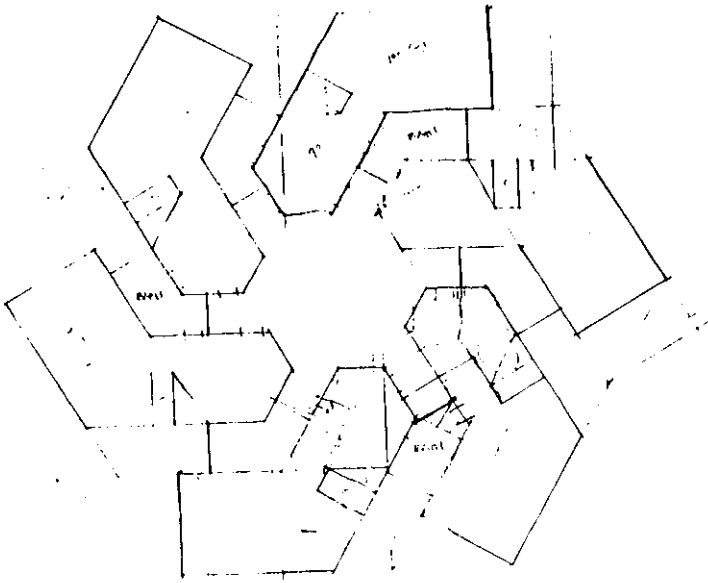
THE AWARENESS OF CHILDREN CONSTANTLY DISRUPTS COUPLE THUS THEY LACK A WORLD OF INTIMACY SO VITAL TO THEIR RELATIONSHIP

POSSIBLE SPACES:

- BALCONY
- ALCOVE
- SITTING ROOM
- FIREPLACE
- WINDOW
- ANTE-ROOM

"MAKE A SPECIAL PART OF THE HOUSE DISTINCT FROM THE COMMON AREAS AND ALL THE CHILDREN'S ROOMS, WHERE A MAN AND A WOMAN OF THE HOUSE CAN BE TOGETHER IN PRIVATE. GIVE THIS PLACE A QUICK PATH TO THE CHILDREN'S ROOMS, BUT AT ALL COSTS, MAKE IT A DISTINCTLY SEPERATE REALM"





PROPORTIONING
 SCHEME FOR DETAILG
 X IN PLANNING 90



THANKS TO BOB MILLER 1987

SPACES

CLASSROOMS
LECTURE ROOMS (TRAD.)
* SEMINAR ROOMS
SMALL GROUP DISCUSSION
LECTURE HALL (LARGE)
(MAY ALSO MULTIPURPOSE)
OUTDOOR

ENTRIES
GATHERING / LOUNGE
LOBBY

UTILITARIAN SPACES
POSTBOXS
JANITORIES
STORAGE
LOADING/RELOADING

MUSIC CLASSROOMS?
PRACTICE ROOMS?

BOOKSTORE
DISPLAY AREAS
AUDIO-VISUAL EQUIP.
SPACES

ART STUDIOS?
GALLERY?

POSSIBLY GROUPED w/
ADMINISTRATIVE
ADMINISTRATIVE
LIBRARY

ACTIVITIES

LECTURE COURSES 15+
DISCUSSION GROUPS * 2-4
SEMINAR TYPE COURSES

SMALL SEMINARS
SOME MUSIC &/OR ART
PRESENTATION

LEARNING & PRESENTING
MEETING PLACE
POSSIBLE COMMUNITY
(SMALL) COURSES

INTELLECTUAL
POSSIBLE SEMINAR
MEETINGS 300+

COURSE TYPES (W/INT. THE
SEMINAR)

THEOLOGY
COMMUNICATIONS
HISTORY OF CHURCH
BIBLICAL STUDIES
MINISTRY
CHURCH AND SOCIETY
MISSIONS & EVANGELISM
PASTORAL CARE (COUNSELING
(PASTORAL)
SACRAMENTS

QUALITIES

PROBABLY MOST
OR ONE OF MOST
FUNCTION ORIENTED
BUILDINGS

LESS FORMAL THAN
TRADITIONAL EDUCATIONAL
BUILDINGS

COULD INFORMALLY
GATHER JUST ABOUT
ANYWHERE

COMFORT
FOCUS ON ACTIVITY
(NON-DISTRACTING SPACE)

INTELLECTUAL

USAGE PATTERNS - ETC.

MOSTLY DOWNTIME
USE BY SOME NIGHT
COURSES

USE MAINLY @ CLASS
TIME SOME LINGER-
ING BEFORE & AFTER

MULTIPLE USES TO
MANY SPACE SO ALLOW
FOR FLEXIBILITY

SMALLER CLASS

MORE INDIVIDUAL OR
2-3 PEOPLE GETTING
TO CLASS AND
MORE COMMUNITY

NOTES, SKETCHES, & IMPORTANT FACTS

DISCUSSION GROUPS
SEE EVERYONE, NO HIERARCHY, COMMUNITY

LECTURE COURSES
NOT MUCH HIERARCHY BUT MORE ISOLATION

VERY ISOLATING TO CLASS MEMBERS BUT MORE CONCENTRATED UPON LECTURE

STILL NO. OF CLASSMEMBERS w/ DEFINITE FOCUS ON LECT.

FOCUS ON LECTURE BUT ALSO COMMUNITY OF STUDENTS.

ADMINISTRATIVE SPACES

FACULTY OFFICES
ADMINISTRATORS
PRES. / ALL COLLEGE AFFAIRS.
V.P. ETC.

INSTRUCTORS
FULL TIME
PART TIME

ASSTANTS
SECRETARIES
ETC.

MISC.
SUPERINTENDENTS OF BLDGS.
JANITORS
LIBRARIANS
VARIOUS PROGRAM DIRECTORS
BOOKKEEPING

FACULTY GROUP SPACES
LOUNGES
MEE. ROOMS
ETC.

FACULTY/STUDENT SPACES

UTILITARIAN SPACES

ACTIVITIES

COLLEGE AFFAIRS
STUDENT AFFAIRS
LECTURE PREPARATION
FACULTY/STUDENT MEETINGS & DISCUSS

PUBLIC RELATIONS
ADVERTISEMENTS
FACULTY RESEARCH
COUNSELING
ACADEMIC
PSYCHOLOGICAL

FACULTY/FACULTY MEETING & DECISIONS

FACULTY/PUBLIC MEETING & DISCUSS.

KEEP ENTIRE COMPLEX RUNNING SMOOTH

WORK SPACE
REFLECTION / PRAYER.
A CENTRAL CREDIT-ING POINT IN CAMPUS

QUALITIES

MUST FUNCTION SMOOTHLY

PERFECT IMPORTANCE
APPEAL OF COMPLEX & FACULTY.

ALLOW FOR: IDENTITIES
INDIVIDUALITY
SMALL GROUP (CAMPUS) GROUP

COMFORT WITH FUNCTIONALITY & EFFICIENCY.
WEALTHY

POSSIBLE INTEGRATION WITH EDUCATION FOR VISIBILITY, EASIER ACCESS, & MORE COMMUNITY LEVEL RELATIONS.

INTELLECTUAL FOCUS
FELLOWSHIP
FACULTY - FACULTY
FACULTY - STUDENT
FACULTY - PUBLIC

QUIET / NO. DISTRACTIVE
VISIBILITY

USAGE PATTERNS ETC.

MAINLY BUSINESS HOURS USAGE.

ADMINISTRATIVE:
MORE APPOINTMENT-TYPE MEETINGS (FORMAL)

FACULTY:
LESS FORMAL INTERACTION.

BOOKKEEPING/RECORDS ETC.
HIGH EFFICIENCY

EASY ACCESSIBILITY WITHIN CAMPUS

ADMINISTRATIVE

NOTES, SKETCHES & IMPORTANT FACTS.

SPACES

CIRCULATION (DESK)
 BOOKS
 PERIODICALS
 MAPS
 AUDIO-VISUAL (TAPES
 AND RECORDS)
 COMPUTER
 COPIERS
 READING/STUDY AREAS
 TYPING
 SPECIAL COLLECTIONS
 ARCHIVES
 SMALL GROUP SPACES
 OFFICES
 LIBRARIANS
 STORAGE
 RESTROOMS
 JANITORS
 SECURITY INFO CRT.
 REFERENCE AREAS

ACTIVITIES

STUDY
 RESEARCH
 SELF IMPROVEMENT
 OR INTEREST
 READ
 MEET WITH OTHERS
 TYPE
 SLEEP
 GATHER RESOURCES
 FOR VARIOUS PERSOLS
 REFLECTION
 DISCUSSIONS

QUALITIES

QUIET
 HIGH VARIETY OF
 AVAILABLE
 STUDY ENVIRONMS.
 AS EFFICIENT IN
 FUNCTION AS
 POSSIBLE.
 "A PLACE OF
 DISCOVERY"
 VARIETY OF
 COMFORT LEVELS
 INDIVIDUAL & SMALL
 GROUP INTERACTION
 CONTROLLED NATURAL
 & MAN-MADE
 LIGHT & DARKNESS
 NON-DISTRACTIVE
 REFLECTIVE
 INSPIRATIONAL

USAGE PATTERNS, ETC

CIRCULATION AS
 A BARRIER (DESK)
 IRREGULAR CRT. (MORE)
 PATTERNS
 USAGE DURING
 NORMAL BUSINESS
 HOURS USUALLY
 MORE INDIV. WHILE
 EVENING IS BOTH
 INDIV. & SMALL
 GROUP.
 GATHERING POINTS.
 ACCESSIBLE FROM
 NEARLY EVERY-
 WHERE.

NOTES, SKETCHES, & IMPORTANT FACTS

"THE WORD"
 INTERPRETATIONS OF WORD
 PHILOSOPHIES / THEORIES
 TRADITIONS
 SYMBOLS
 MORE UTILITARIAN APPLICATIONS.
 PERSONAL EXPERIENCES OF OTHERS.
 INSPIRATION

SEE JIM'S THESIS

WE MUST FIND WHAT UNITES US
RATHER THAN DIVIDES US.

PHYSICAL WORLD IS TOO SMALL
TO BE IGNORANT OF EACH OTHER
AND IGNORANCE LEADS TO
VIOLENCE.

CULTURAL UNITY

MUST THINK OF "WHOLE" INTO
WHICH THE DESIGN MUST EXIST.

GOOD OUTDOOR-INDOOR RELATIONS

GOES ABOVE AND BEYOND THE
WESTERN PRACTICAL, RATIONAL,
HYGIENIC, AND COMFORTABLE
SOLUTIONS.

BEAUTY AND PROPRIETY

THE ARCHITECTURE OF THOUSANDS
OF YEARS AGO EVEN REACHES
INTO TODAY'S CULTURE. (SANDUCCO-
IZARCA, SIMPLICITY, MODULAR DESIGN.)

STRONG INDEPENDENCE IN
DESIGN - NO SYMMETRY IN
ORDINARY BUILDINGS BUT IT

DIVINE PERFECTION EXISTS

NO STRAIGHT AXES, BUT INSTEAD
SURPRISE EFFECTS AND
STIMULATIONS BY SUBTLY
CHANGING DIRECTION IN APPROACH
TO BUILDINGS

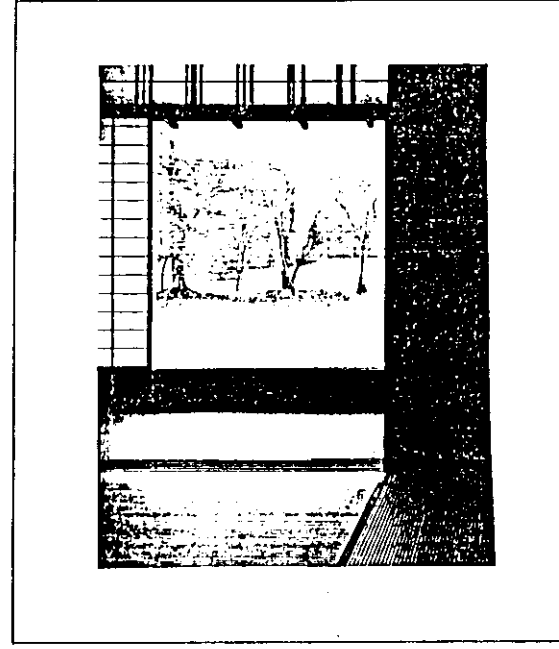
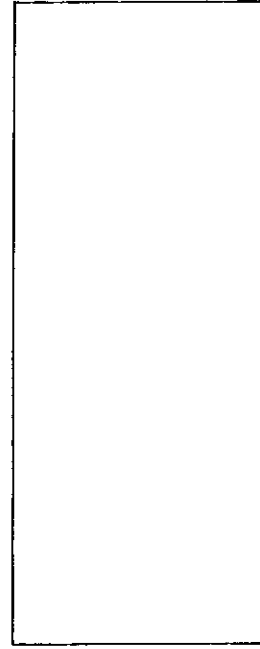
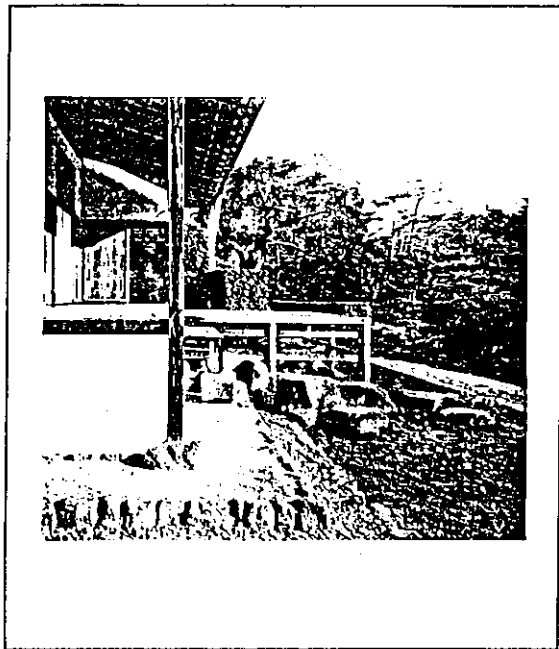
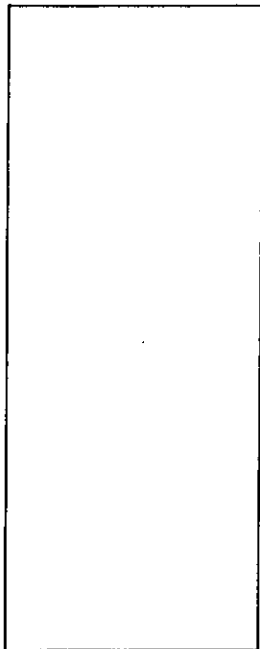
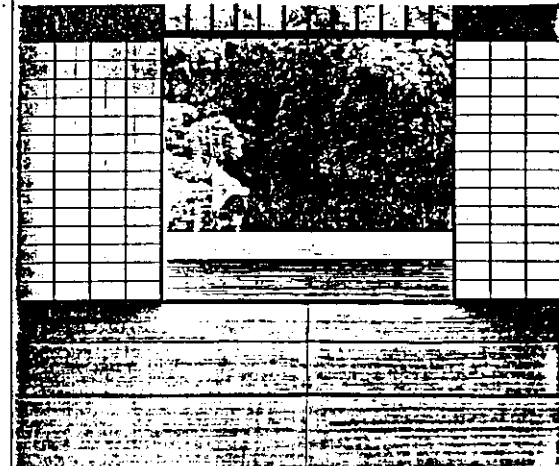
EMPHASIS TO HUMAN SCALE
THROUGHOUT, COMBINED WITH
OPENNESS AND FLEXIBILITY
OF PLAN

"A WALL AND OPENING
AS A FRAME, PASSAGE
AND SEPARATOR OF
REALMS."

CONCENTRATION ON
FRAGMENT OF ENTIRE
ENVIRONMENT, YET
THERE IS THE POSSI-
BILITY FOR INTER-
ACTING WITH ENTIRE
ENVIRONMENT.

↓
NOT OVERWHELMED OR
DISTRACTED BY
ENTIRETY WITHOUT
CHOICE.

ALSO SOMETIMES
DECEPTIVE IN THAT
A FRAGMENT MAY
NOT BE A TRUE
REPRESENTATION OF
ENTIRE ENVIRONMENT,
THUS A LEVEL OF
SURPRISE MAY EXIST.



Bibliography

- Alexander, Christopher et al. A Pattern Language. New York: Oxford University Press, 1977.
- Allen, Richard Sanders. Covered Bridges Of The Middle West. Brattleboro, Vermont: Stephan Green Press, 1970.
- Bieler, Andre. Architecture in Worship. Philadelphia: Westminster Press, 1965.
- Birks, Tony. Building The New Universities. Newton Abbey, Great Britain: David and Charles Pub., Ltd., 1972.
- Brannach, Frank. Church Architecture, Building For A Living Faith. Milwaukee: The Bruce Publishing Co., 1932.
- "Continuity Amid Change" (Saint Meinrad Arch Abbey). Architectural Record, April 1985, pp. 130-137.
- "The Crystal Cathedral, Embodiment Of Light And Nature". Architectural Record, November 1980, pp. 77-85.
- Derlega, Valerian J. and Louis H. Janda. Personal Adjustment; The Psychology Of Everyday Life, 3rd Edition. Glenview, Illinois: Scott, Foresman and Co., 1986.
- Engel, David Harris. Japanese Gardens For Today. Rutland, Vermont: C. E. Tuttle Co., 1959.
- Engel, Heimrich. Japanese House; A Tradition For Contemporary Architecture. Rutland Vt.: C.E.Tuttle Co., 1964.
- Entire Issue Devoted To Religious Buildings. Architectural Record, February 1984.
- "For A New College An Old Village Silhouette" (Concordia Seminary). Architectural Forum, December 1954, pp. 132-136.
- Frey, Edward Snively. This Before Architecture. Jenkintown, Pa.: Foundation Books, 1963.
- Fry, Plantagenet Somerset. Great Cathedrals. London, New York: Crescent Books, Hamlyn Pub. Group Ltd., 1982.
- Gandee, Charles K. "A Wayfarer's Chapel By Fay Jones". Architectural Record, March 1981, pp. 88-93.
- Gill, Dr. Theodore. "New Criteria For New Forms". AIA Journal, October 1958, pp. 32-35.
- Guenther, Bernard. Architecture And The Church. St. Louis: Concordia Publishing House, 1965.

Holy Bible

Imperial Palace. Tokyo, Japan: Japan Times, 1971.

Interiors Spotlight. "A Sanctuary In The Woods" (Thornecrown Chapel). Interiors, May 1981, pp. 176-177.

Ishimoto, Yasuhiro, Walter Gropius, Kenzo Tange. Katsura, Traditions And Creations In Japanese Architecture. New Haven, Connecticut: Yale University Press, 1960.

Lewis, C. S. Miracles. New York: Macmillan Publishing Co., 1960.

Mehrabian, Albert. Public Places And Private Spaces. New York: Basic Books, Inc., 1976.

Minamoto, Toyomune and Manshichi Sakamoto. Daitaku-Ji. Tokyo, Japan: Asahi Shinbun, 1958.

"Monestary In A Modern Mood" (Breuer's St. John's Abbey). Architectural Forum, December 1956, pp. 107-109.

Nishihara, K. Japanese Houses. Tokyo, Japan: Japan Publications, 1968.

"Saarinen Colleges In Situ At Yale". Progressive Architecture, November 1962, pp. 57-60.

Saarinen, Eero. "Polygonal Architecture" (Samuel Morse and Erza Stiles Colleges). Architectural Record, February 1960, pp. 159-164.

Sovik, E. A. Architecture For Worship. Minneapolis: Augsburg Publishing House, 1973.

Tange, Kenzo, Noboru Kawazoe. ISE, Prototype Of Japanese Architecture. Cambridge, Mass.: The MIT Press, 1965.

United Theological Seminary Bulletin: Catalog 1978-1980. Dayton, Ohio: 1978

Weber, Wayne M., FAIA. Covered Bridges In Indiana. Midland, Michigan: Northwood Institute, 1977.

REFLECTIONS & THANKS



Reflections

In 1981, a naive young man arrived at Ball State University. In his first years, he struggled and even contemplated quitting -- on a regular basis. Little did he know that almost 7 years later he would still be trying to complete the 5-year program. WELL, HE'S FINALLY MADE IT! Through all his adventures, he can honestly say that he is a better person. The degree of improvements were not readily apparent throughout this time until recently during the revision of his portfolio. Here the struggle seemed very worthwhile. This thesis and more recent projects gave him a very high sense of accomplishment which he will cherish for a long time.

Thanks for the memories.

Thanks

Thank you Mom and Dad for your help and patience during this and the other projects throughout my education, I love you both dearly.

For all your support, encouragement, information and guidance, I also thank:

Brenton
My Family
Professor Dr. Bruce Meyer
Professor Jack Wyman
Rev. Larry Kurtz
Rev. Cindy Reynolds
Donna Ferner
All My Friends And Classmates