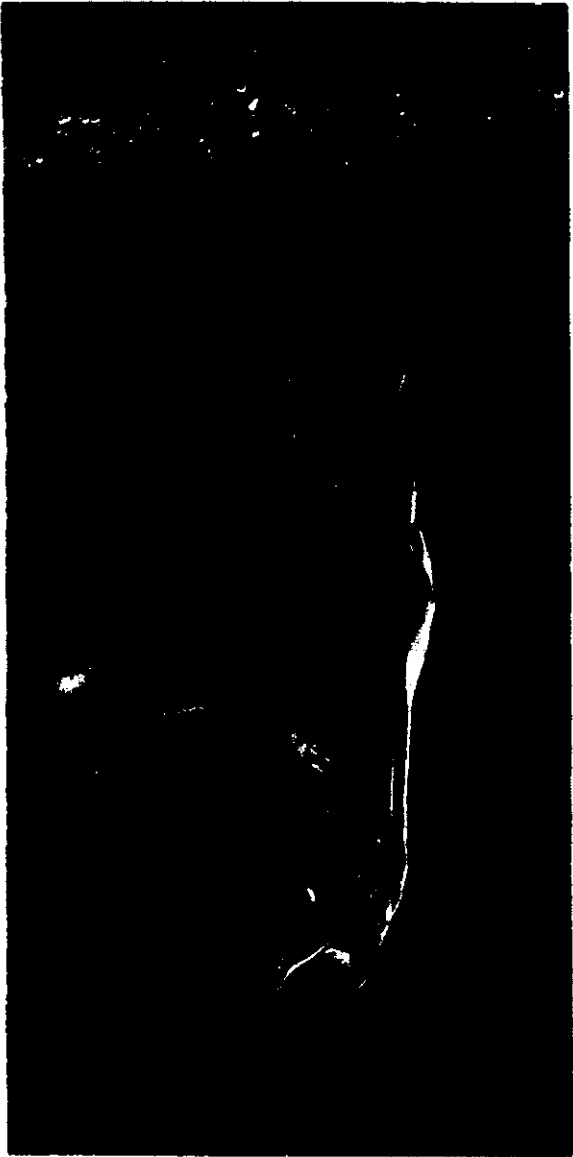
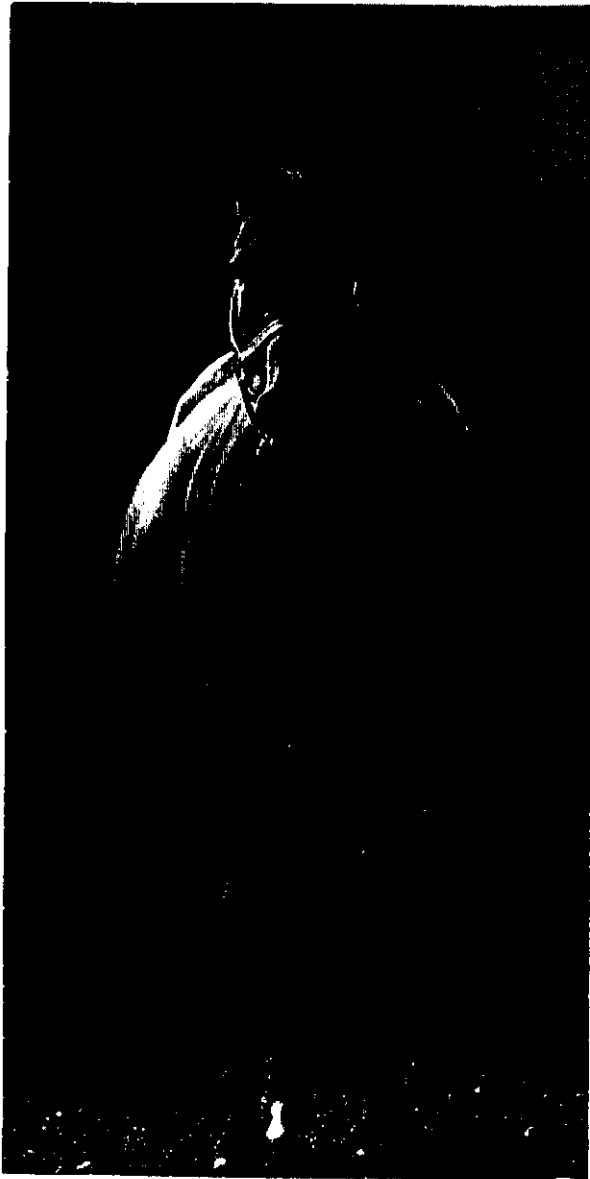

ATLANTA **MET**ROPOLITAN RACEWAY PARK
A CELEBRATED DAY OF RACING







ATLANTA METROPOLITAN RACEWAY PARK

A CELEBRATED DAY OF RACING

a thesis by shelly l. boxell
for an architectural design thesis project
department of architecture
ball state university

© copyright 1996 shelly l. boxell

I dedicate this book to the people who have guided and shaped me into the person I am today.

I would like to thank
my parents for their love and support,
my father for his love of horse racing,
the professors that inspired me,
the friends that kept me sane,
and, of course, clark.



ATLANTA METROPOLITAN RACEWAY PARK

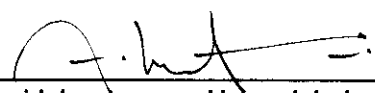
Arch
1995
BB

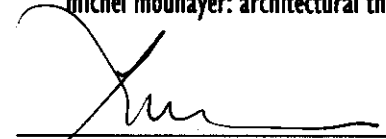
a thesis by shelley l. boxell
for an architectural design thesis project
department of architecture
ball state university
april 26, 1996

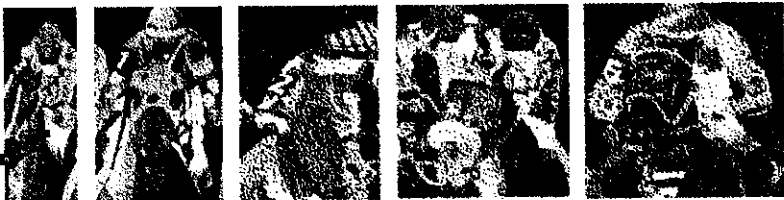
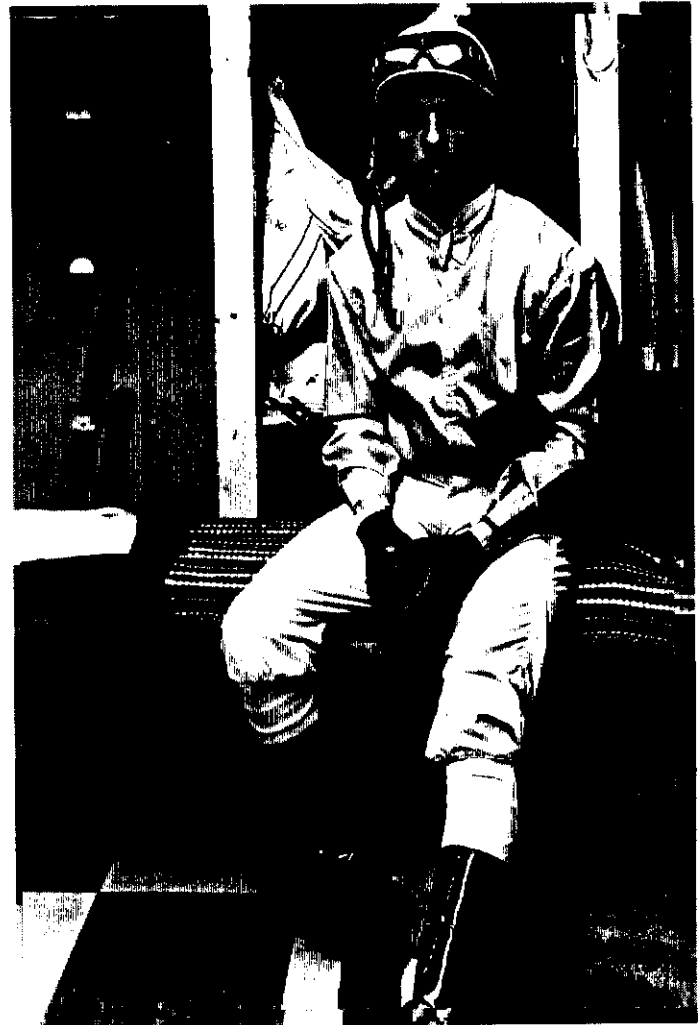
architectural design thesis committee


andy seager: architectural design studio professor


harry eggink: architectural thesis critic


michel mounayer: architectural thesis critic


les smith: landscape architectural thesis critic



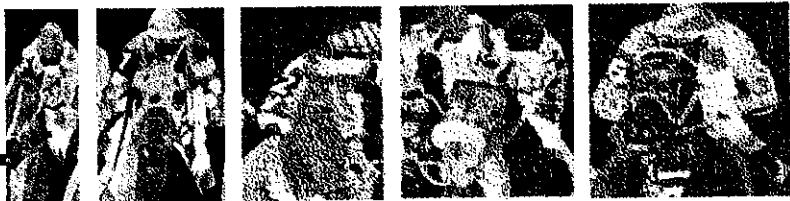
ATLANTA METROPOLITAN RACEWAY PARK

C O N T E N T S

INTRODUCTION	3	PATRON	71
DESIGN CRITERIA	5	PROMENADE PLAZA	73
DESIGN OBJECTIVES	7	CLUB DINING	75
IMAGES	9	CLUB SUITES	77
AMBIANCE	15	MEETING SUITE	79
PRECEDENTS	19	OMNI-VISION LOUNGE	81
ORGANIZATION	23	ENTERTAINMENT ROOM	83
RELATIONSHIP STUDIES	25	CONCOURSE	85
SITE DATA	29	TRACK TERRACE	87
SITE SELECTION	33	PICNIC PLAZA	89
DESIGN SOLUTION	35	SPECIALTY SHOP	91
MASTERPLAN	37	INFIELD PLAZA	93
THE BACKSTRETCH	41	EMPLOYEE	95
THE VILLAGE	45	VETERINARIAN	97
THE RACEWAY	49	BACKSTRETCH CLUB	99
THE CLUBHOUSE	51	GUEST ROOM	101
FACILITY PROGRAM	57	SPACE SUMMARY	103
HORSE	59	COST ESTIMATE	107
STABLES	61	CONCLUSION	109
TRAINING RING	63	BIBLIOGRAPHY	111
Paddock	65		
TRACK	67		
WINNER'S CIRCLE	69		



ATLANTA METROPOLITAN RACEWAY PARK



ATLANTA METROPOLITAN RACEWAY PARK

INTRODUCTION

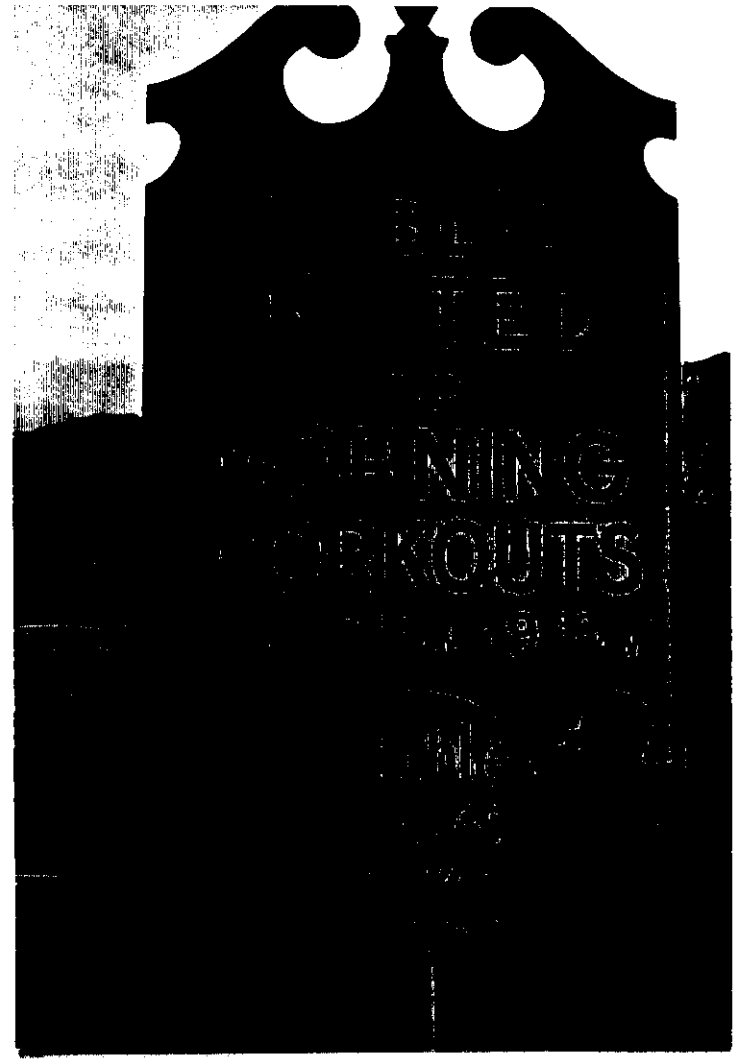
SINCE COLONIAL VIRGINIANS BEGAN IMPORTING VALUABLE BLOODED HORSES FROM ENGLAND, THOROUGHBREDS IN AMERICA HAVE BEEN TREATED IN A MANNER BEFITTING THEIR ROYAL PEDIGREES. MORE THAN HALF A MILLION THOROUGHBREDS ARE SCATTERED ON FARMS IN EVERY STATE IN THE UNION. THESE THOROUGHBREDS ARE RAISED AS KINGS, STABLED IN BARNS THAT RESEMBLE CHURCHES OR TEMPLES, AND GRAZED ON LUSH GREEN ROLLING LAND BEHIND ROWS OF WHITE FENCES.

THE STORY OF HORSE RACING IN AMERICA IS ALSO A STORY OF THE GRASSY, PRESTIGIOUS KINGDOMS WHERE THE DYNASTIES OF HUMANS AND ANIMALS HAVE INTERTWINED AND A PLACE WHERE FORTUNES HAVE BEEN MADE AND FORTUNES HAVE BEEN LOST. THOROUGHBRED HORSES ARE SUCH PRECIOUS CREATURES THAT THEY ARE GIVEN THEIR OWN TEAM TO TAKE CARE OF THEM, BEAUTIFUL SHELTERS, AND THE OPPORTUNITY TO SIRE THE NEXT GENERATION OF WINNERS.

NOT ONLY ARE THE THOROUGHBREDS PRECIOUS, BUT THE OWNERS TAKE GREAT CARE TO MAKE SURE THAT THEIR CARETAKERS ARE THE BEST. THEN THE OWNER AND TRAINER CHOOSE THE RACING FACILITY WHERE THEIR THOROUGHBRED WILL RACE WITH JUST AS MUCH CARE. THE BEST RACECOURSES ARE RUN BY NOT ONLY A TEAM OF EMPLOYEES, BUT A FAMILY OF EMPLOYEES. AFTER A MAJOR LEAGUE BASEBALL GAME OR A NATIONAL LEAGUE FOOTBALL GAME, THE CROWD GOES HOME, THE CLEANUP CREWS STRAIGHTEN THINGS UP, AND THEN THE STADIUMS SIT EMPTY. WELL, AT A THOROUGHBRED RACETRACK, AFTER THE THOUSANDS OF PATRONS HAVE

LEFT THE FACILITY, THE TRACK IS STILL JUST AS MUCH ALIVE. IT TAKES NEARLY A THOUSAND EMPLOYEES TO RUN A RACETRACK, INCLUDING THE MANICURING OF THE BEAUTIFUL FLOWERS IN THE GARDENS, MOWING THE ACRES AND ACRES OF LUSH GREEN GRASS, RAKING THE OVAL ONE MILE TRACK, AND TRAINING THE THOROUGHBREDS FOR THE NEXT DAY OF RACING. THEREFORE, BECAUSE THE JOB OF THE RACETRACK EMPLOYEE DOESN'T STOP WITH THE RUNNING OF THE LAST RACE, MOST OF THE EMPLOYEES LIVE ON THE SITE AND BECOME EACH OTHER'S FAMILY.

IN DESIGNING A THOROUGHBRED RACECOURSE AND ITS SURROUNDINGS, I HAVE CHOSEN NOT ONLY TO ENTERTAIN THE VISITING PATRONS, BUT TO TEACH THEM THE STORY OF THE THOROUGHBRED THROUGH INCLUDING VISITS WITH BREEDING FARMS, AN INFORMATIONAL MUSEUM, A VILLAGE WHERE THE SILKS OF THE JOCKEYS ARE ACTUALLY DYED, AND AN INTERACTIVE CLUB WHERE JOCKEY, EMPLOYEE, PATRON, AND HORSE OWNER CAN SOCIALIZE WITH ONE ANOTHER. THE FOCUS HAS ALSO BEEN PUT BACK ONTO THE THOROUGHBREDS BY HEIGHTENING THE PARADING AND PROCESSION OF THE HORSE. THE THOROUGHBRED CAN BE VIEWED DURING ITS MORNING WORKOUT AT THE TRAINING RING, AT THE PADDOCK WHERE HE WILL BE GROOMED AND SADDLED, AROUND THE PARADE RING AS HE IS SHOWED OFF TO THE CROWD, AND ON THE TRACK WHERE HE WILL THUNDER TOWARDS THE FINISH LINE. THIS ATLANTA METROPOLITAN RACEWAY PARK WILL PROVIDE AMENITIES FOR THE COMMUNITY, OPPORTUNITIES FOR THE PATRON, AND A PRESTIGIOUS HOME FOR THE VALUABLE THOROUGHBRED.



ATLANTA METROPOLITAN RACEWAY PARK

DESIGN CRITERIA

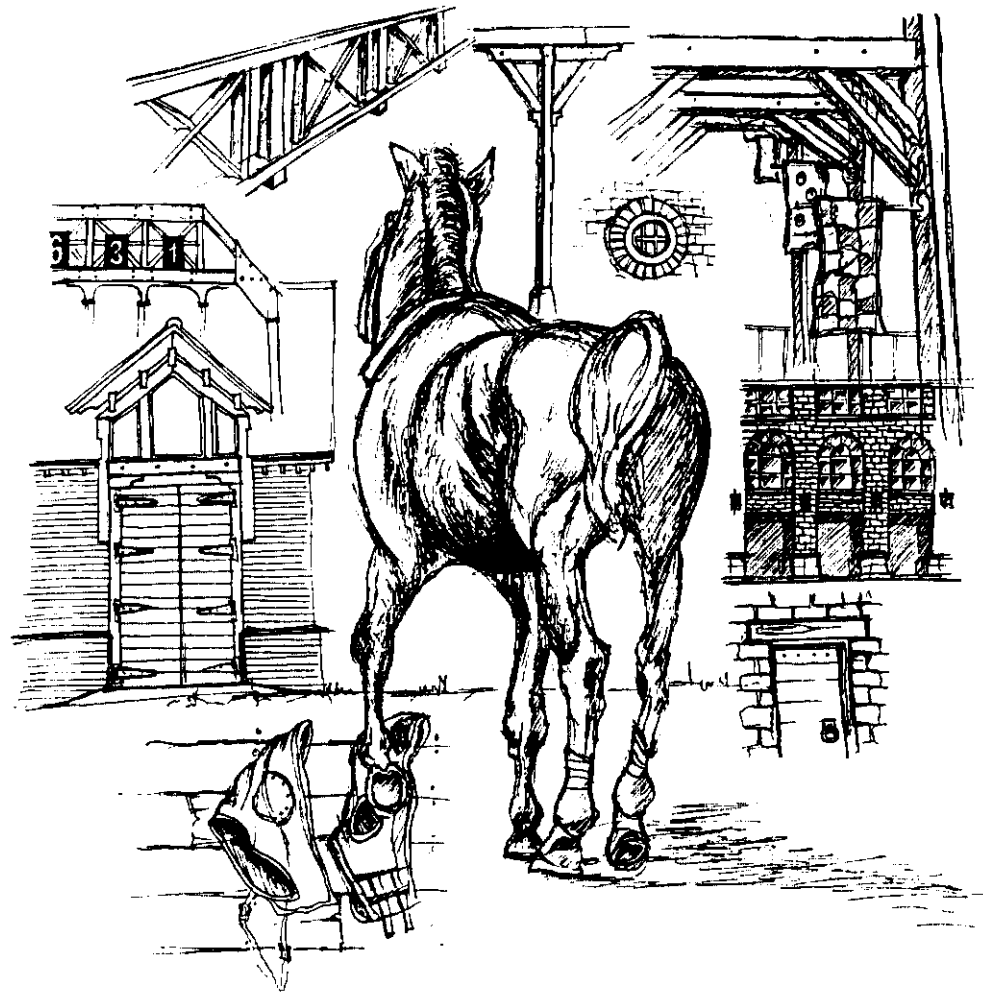
ATLANTA METROPOLITAN RACEWAY PARK WILL BE A THOROUGHBRED RACETRACK THAT ALLOWS THE TRUE SPIRIT OF THE RACES TO SHINE THROUGH. THE PROCESSION AND PARADING OF THE HORSES BEFORE AND AFTER THE RACE WILL BE HIGHLIGHTED AND CELEBRATED HERE. THE RACEWAY PARK WILL ALSO BE A STORY TOLD ABOUT THE LIFE OF A THOROUGHBRED RACEHORSE. THE STORY WILL BE TOLD FROM THE TIME THE FOAL COULD BARELY STAND ON HIS WOBBLING LEGS TO THE TIME WHEN HE COULD FROLIC IN THE GRASSY FIELDS TO NOW AS A BRISK THOROUGHBRED STRIVING FOR THE FINISH. THE RACEWAY PARK WILL BE A WAY FOR PATRONS TO RELAX AND ENJOY ALL THE SIMPLISTIC PLEASURES OF LIFE, LIKE A WALK THROUGH A GARDEN, WINDOW SHOPPING, OR A PICNIC UNDER A TREE.

THE RACEWAY PARK WILL GLORIFY THE COLORS OF THE CROWDS, THE SILKS OF THE JOCKEYS, AND THE BUDS OF THE FLOWERS. THE ARCHITECTURE OF THE FACILITY WILL BE OF A COHESIVE STYLE AND STATELY VOCABULARY, BUT ONLY A BACKDROP FOR THE TRUE SPIRIT OF THE TRACK, THE THOROUGHBRED. THE THREE MAJOR FOCAL POINTS WILL BE THE TRAINING RING IN THE BACKSTRETCH, THE PARADE RING IN THE PROMENADE PLAZA, AND THE TRACK SURROUNDING THE INFIELD LAKES FULL OF SWANS. THESE THREE FOCAL POINTS WILL HIGHLIGHT THE TRAINING, GROOMING, AND RACING OF THE THOROUGHBREDS. PATRONS WATCHING THESE ACTIVITIES WILL FILL THE PLAZAS AND SEATING WITH THE FESTIVITY AND ADMIRATION SO DESERVING THAT OF THE THOROUGHBRED.

THE RACEWAY PARK WILL BE A PLACE FOR PATRONS OF ALL AGES, INTERESTS, AND SOCIAL CLASSES. THE FACILITY WILL BE A WELCOMING FACILITY WITH HUMANLY SCALED DETAILS, GARDENS, FURNITURE, AND INTIMATE SPACES. HOWEVER IT WILL ALSO BE MONUMENTAL IN ITS OPEN VAST TERRAIN, THE ROW AFTER ROW OF SEATS, THE ENDLESS LINES OF WHITE FENCES, THE CONSTANT WAVE OF THE CROWD, AND THE OPEN TRUSSED CEILINGS OF THE FACILITIES. THIS VASTNESS WILL MAKE IT HARD TO TELL WHERE THE PARK STARTED AND WHERE IT ENDED. THE ROLLING HILLS WILL HOLD MYSTERIES OF WHAT IS BEYOND.

THE RACEWAY PARK WILL CARRY THE OLD TRADITION OF A DAY AT THE RACES FILLED WITH ACTIVITIES AND ENJOYMENT FOR THE WHOLE FAMILY. A PLACE WHERE EVEN IF ONE LOSES ON HIS WAGERING ALL DAY, HE CAN WALK AWAY FROM THE TRACK WITH FOND MEMORIES SPENT IN THE OUTDOORS AND WITH HIS FAMILY. THE RACEWAY PARK WILL BE AN ENTERTAINMENT CENTER WHERE THE ANXIETY TO COME BACK MATCHES THE ANXIETY OF THE CROWD AS THE THOROUGHBREDS TAKE THE LAST TURN TOWARDS THE FINISH LINE.

ATLANTA METROPOLITAN RACEWAY PARK WILL NOT ONLY BE A BEAUTIFUL RACE-COURSE AND A WONDERFUL WAY TO SPEND THE DAY, BUT IT WILL ALSO BE AN ADDED AMENITY FOR THE COMMUNITY ITSELF. WEDDINGS, CONCERTS, BUSINESS MEETINGS, HIGH SCHOOL PROMS, AND ELEMENTARY SCHOOL FIELD TRIPS WOULD BE JUST SOME OF THE WAYS THAT THE RACEWAY PARK COULD GIVE BACK TO ITS COMMUNITY.



ATLANTA METROPOLITAN RACEWAY PARK

DESIGN OBJECTIVES

THE MAKEUP OF A SPORT IS CONSTANTLY BEING ANALYZED. ARE THE CROWDS ATTENDING? IS THE REVENUE BEING MADE? SPORTS MUST ALWAYS STAY ON TOP OF THE CHANGING TIMES. THE ATLANTA METROPOLITAN RACEWAY PARK IS AN INNOVATIVE APPROACH TO THE MAKEUP OF THE THOROUGHBRED RACING WORLD. THE RACEWAY PARK BRINGS A MARRIAGE BETWEEN TWO SEPARATE WORLDS: THE BACK-STRETCH AND ITS EMPLOYEES AND THE RACEWAY AND ITS PATRONS. THE BACK-STRETCH BECOMES OPEN AND ACCESSIBLE TO THE PUBLIC WHILE STILL ALLOWING SECURITY FOR THE PRICELESS THOROUGHBREDS. THE MARRIAGE OF THESE TWO WORLDS MEET IN AN INFORMAL VILLAGE AREA WHERE CAFES AND SHOPS ENTERTAIN THEM.

THE RACEWAY PARK IS AN ATTEMPT TO MAKE PATRONS UNDERSTAND AND ENJOY THE ENTIRE SPORT OF THE THOROUGHBRED. THE FOLLOWING PAGES ARE STUDIES TO CAPTURE THE IMAGES THAT FORM THE HEART OF THE SPORT BUT ARE USUALLY HIDDEN BEHIND THE SCENES AND THE AMBIANCE THAT THE THOROUGHBRED AND ITS NATURE CAN BRING TO THE ARCHITECTURE OF THE FACILITY.

THE SKETCHES ON THIS PAGE WERE ALSO DONE TO CAPTURE WHAT I BELIEVE THE SPORT IS TRULY ABOUT, THE THOROUGHBRED. THE ATLANTA METROPOLITAN RACEWAY PARK WILL BE DESIGNED UTILIZING THESE IMAGES AND THEIR AMBIANCE TO DRIVE ITS DESIGN OF SPACE, INTIMACY, AND AESTHETICS.

THE HEART OF THE THOROUGHBRED RACETRACK DOES NOT LIE WITHIN PARIMUTUAL BETTING OR SIMULCAST RACING, IT LIES WITHIN THE SUPPORT SYSTEM OF THE RACETRACK. THE TRUE IMAGES OF THE RACETRACK GO FAR BEYOND JUST THE TRACK AND ITS CLUBHOUSE AND INTO THE PROCESS THAT MAKES IT ALL HAPPEN. THESE IMAGES ARE USUALLY OVERLOOKED, FORGOTTEN, OR HIDDEN BEHIND THE SCENES.

THE STately BARNs AND DELICATE DETAILS OF OLD STABLES TELL THE TALE OF THE THOROUGHBREDS' HERITAGE. THE ASSORTMENT OF EQUIPMENT HANGING ON ROWS OF HOOKS OR SLUNG OVER RAILINGS REPRESENT THE NECESSITIES OF THE GROOMING AND CARE OF THE HORSES. THE SUDS RESIDING ON THE FLOOR OF THE WASH DOWN AREAS ARE A REMINDER OF THE MUD THAT ONCE EXISTED. THE STEAM RISING OFF OF THE BACKS OF THE HORSES AND OUT OF THEIR SNOUTS, REMINDS US OF THE EARLY MORNING DEW STILL IN THE AIR DURING TRAINING TIME. STEEPLES, IRON DECORATED BALCONIES, AND IVY COVERED FACADES BRING BACK MEMORIES OF A SPECIAL PLACE.

THE MAN, SO STRONG UNDER HIS FLANNEL SHIRT, RACKS THE HAY IN THE STABLE. THE BLACKSMITH'S HAMMER MOLDS THE VEHICLE OF THE THOROUGHBRED, THE HORSESHOE. THE FLOWERS ARE PLANTED AND GROOMED YEAR ROUND MAINTAINING THEIR ELEGANT COLOR. THE EMPLOYEES RUN THEIR LAST CHECK ON THE STARTING GATE. ALL OF THESE MENIAL TASKS AND MANY MORE ARE A PART OF THE BEHIND THE SCENES PREPARATION THAT TAKES PLACE TO SUPPORT THE FINAL OUTCOME, THE RACE.



ATLANTA METROPOLITAN RACEWAY PARK

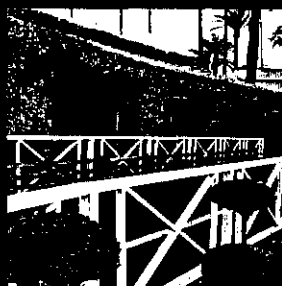
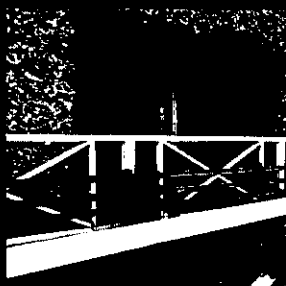
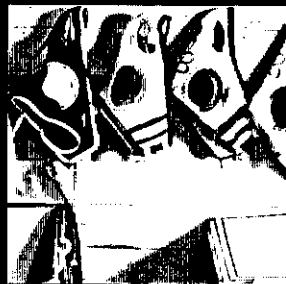
DESIGN OBJECTIVES

I M A G E S



IMAGES OF A THOROUGHBRED RACETRACK

the white fence rolls gently over the green
grass...ivy covered eglone fences blend
casually in the nature that nurtures it...flies
swarm around their ivy home...paint
chips and discolors...the rows of fences
seem endless...patterns of wooden timbers
cross the eye...iron is curvessed into pictur-
esque images succumbed within bars...rusty
nails line the walls with dangling
barnesses...the headgear seems breathless
without the racing thoroughbred trapped
inside...saddles slung over rotten slats
of fence and polished for the next race...



ATLANTA METROPOLITAN RACEWAY PARK

DESIGN OBJECTIVES

I M A G E S

chipped slats run horizontal, protecting the thoroughbred's domain...blankets drape over the rusty rails...dew rests gently on the rolling landscape...steam rises off the warm backs...the air becomes mystical while full of hazy residue from the early morning...the wooden walking ring spins like a merry go round...neighs break the silence of the restful dawn...suds fill the drains...leather is polished...reins are harnessed...the anticipation begins to fill the air as the horse is trained, groomed, walked, nurtured, and prepared...



a hidden world beyond the backstretch...
majestic horses flow freely amidst rolling land

A HIDDEN WORLD BEYOND THE BACKSTRETCH

tap tapping...the blacksmith's hammer molds

the soul of the horse...leather chaps pro

tect the master of shoes...the glow of the

molten steel from beyond...silver glitters

around the "Toledo" device...judge and jury

of fairness and weight...weeping trees arch

their heavy branches to drape elegant

and lacy foliage down...trucks line the bar

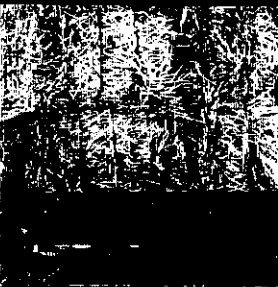
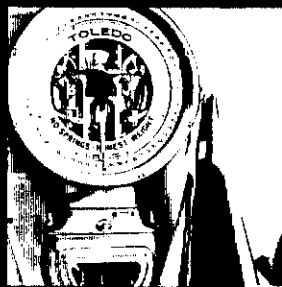
rier of reality and fantasy...hay bound

tightly in geometric bundles...straw dabbles

color over the hard, cold dirt...watchful eyes

waiting while their anxiety builds...

chambers sit idle and open...

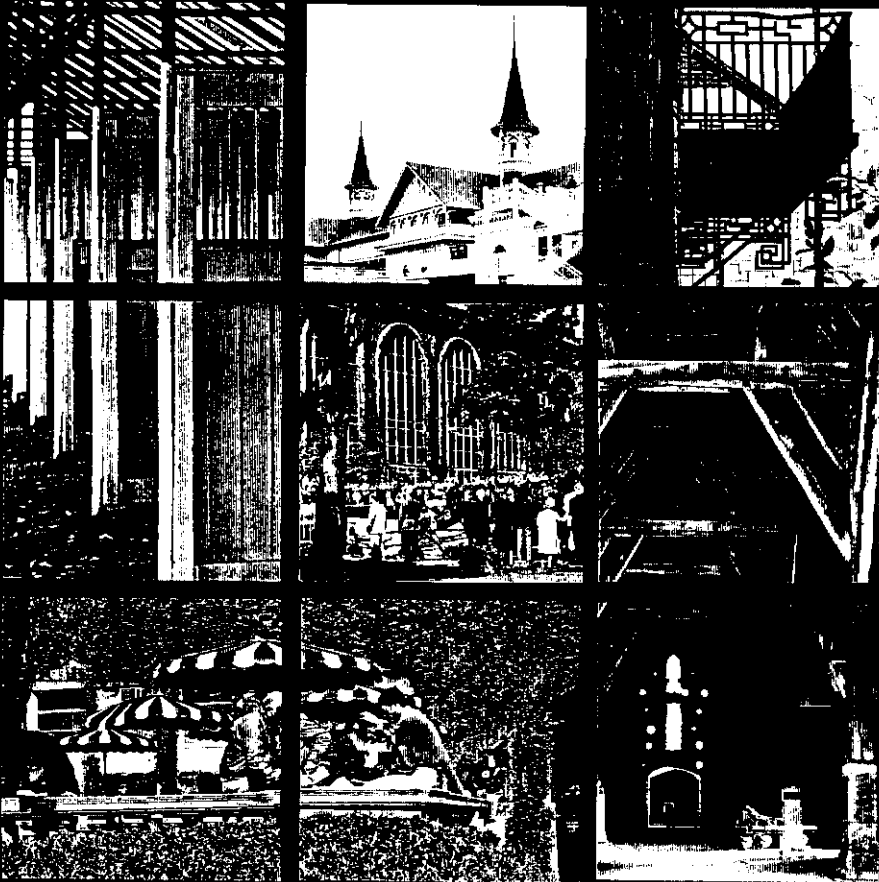


ATLANTA METROPOLITAN RACEWAY PARK

DESIGN OBJECTIVES

I M A G E S

steeple, arches, and ivy create vocabulary
of space...twin towers soar above the blue
grass...rich ivy carpets the facade of
stone...a rumbling wave of visitors
flows over the land...spotted colors wan
der freely amongst each other...platforms
surrounded by decorative iron and stone
carefully cantilever...vistas of views in
every direction...umbrellas shading with
arms open and stretched skin...the sun
warms the afternoon while the morning chill
disappears...crafted trusses sit in shadow
as the stables empty...



a festive atmosphere awaits the race...
anticipation deepens as the parade begins

A FESTIVE ATMOSPHERE AWAITS THE RACE

THE AMBIANCE OF THE ATLANTA METROPOLITAN RACEWAY PARK IS A KEY DESIGN OBJECTIVE. IT SHOULD ALLOW EVERY MAN, WOMAN AND CHILD OF EVERY SOCIAL STATUS TO FEEL AT HOME AND A PART OF THE EXCITEMENT AT THE TRACK. IT SHOULD ALLOW THE TRUE ASPECTS THAT MAKE UP THE HISTORY OF THE SPORT TO SHINE, LIKE THE BEAUTY OF THE HORSE, THE THUNDER OF THE TRACK, AND THE STABLEHANDS SADDLING THE HORSES. THE PARIMUTUAL WINDOWS SHOULD NOT BE AS EMPHASIZED AS THE RACE ITSELF AND ITS PREPARATION OF TRAINING AND GROOMING. THE AMBIANCE SHOULD ALSO BE CAPTURED IN THE ARCHITECTURE OF THE FACILITIES. THE STABLES SHOULD BE DESIGNED AS DOMAINS TO THE BREEDING KINGDOMS THAT THE HORSES WERE RAISED ON AND THE CLUBHOUSE AND GRANDSTAND SHOULD BE DESIGNED TO CAPTURE THE SPIRIT OF THE FAST PACED RACE.

THE ANTICIPATION THAT THE CROWD FEELS AS THE TIME BUILDS BETWEEN EACH RACE SHOULD BE CELEBRATED. AFTER A RACE IS COMPLETE THE CROWD SILENCES. USUALLY FIFTEEN TO THIRTY MINUTES FOLLOWS UNTIL THE NEXT SET OF THOROUGHBREDS ENTER THE STARTING GATE. SOME PATRONS SIT PATIENTLY IN THEIR SEATS LOOKING OVER THE LINEUP FOR THE NEXT RACE IN THEIR BETTING GUIDE, WHILE OTHER STEW ABOUT ANXIOUSLY AWAITING TO WATCH THE PROMENADE OF THE HORSES.

THE SPIRIT OF THE PROCESSION, OR CAVALCADE, OF THE HORSES FROM THE STABLES TO THE PADDOCK AND FINALLY TO THE RACETRACK CAN ALSO BE SEEN IN THE ARCHITECTURE OF THE FACILITY: ROWS AND ROWS OF WHITE FENCING, COLUMN AFTER COLUMN SUPPORTING THE STABLES, AND COLORS COLLIDING ONE ON TOP OF ANOTHER IN THE CROWD.



ATLANTA METROPOLITAN RACEWAY PARK

DESIGN OBJECTIVES

A M B I A N C E



p
a
r
a
d
e
a
n
t
i
c
i
p

c
a
v
a
l
c
a
a
w

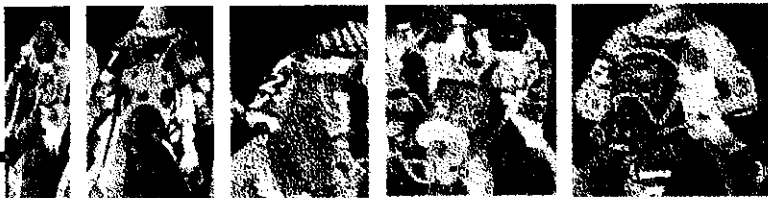
c
i
p
a

AMBIANCE STUDY
CAPTURING THE ANTICIPATION OF THE PROCESSION

THE STRENGTH OF A THOROUGHBRED IS NOT HIDDEN. ITS MUSCLES SHAPE ITS SILHOUETTE. ITS MOVEMENT DEMONSTRATES THE POWER CONTAINED WITHIN ITS MUSCLES. THE LIGHT SHIMMERS OFF OF ITS TAUT SKIN. THE FLICKER IS CAPTURED ON ITS WELL-GROOMED BACK. JUST AS FRANK GEHRY UTILIZED A METAL, REFLECTIVE SKIN ON HIS MUSEUM OF ART, ARCHITECTURE CAN EXPRESS THE QUALITY OF THE THOROUGHBRED THAT MIGHT OTHERWISE BE OVERLOOKED; ITS BEAUTIFUL SHEEN.

THE THOROUGHBRED IS NOT PREDATOR, BUT PREY. MOTHER NATURE DESIGNED THE THOROUGHBRED TO RUN FROM DANGER, ITS PREDATOR. THEREFORE IT CAN RUN VERY FAST. MOTHER NATURE ALSO GAVE THE THOROUGHBRED THE CAPABILITY TO USE ITS PERIPHERAL VISION TO THE FULLEST TO GUARD ITSELF FROM A SURPRISE ATTACK. THIS IS THE REASON THAT SOME THOROUGHBREDS WEAR BLINDERS DURING A RACE AND ARE NOT AS EAGER TO BE SPOOKED BY THE OTHER HORSES OR THE CROWD. SOME THOROUGHBREDS ALSO WEAR COLORED GOGGLES, ALLOWING THE DIFFERENT HUES TO CALM THEIR AGGRESSIVE NATURE.

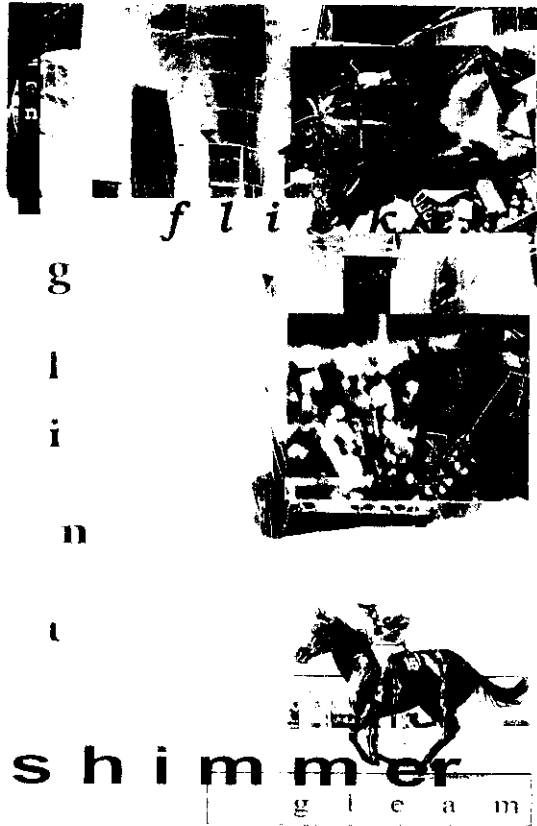
THE AGILE NATURE OF THE THOROUGHBRED HORSE AND THE FAST PACED RACE AROUND THE TRACK CAN BE EXPRESSED THROUGH KINETIC OR AXIAL ARCHITECTURE. THE VISUAL MOVEMENT OF THE PATRON CAN BE GUIDED THROUGH THE ARCHITECTURE FACILITY ITSELF. THE VOLUMINOUS CROWDS OF PATRONS POURING IN AND OUT OF THE RACEWAY PARK ON A SPECIAL DAY OF RACING SHOULD ALSO BE CELEBRATED, THROUGH THE DESIGN OF LARGE ENTRY PLAZAS, GATHERING SPACES, AND OBSERVATION BALCONIES.



ATLANTA METROPOLITAN RACEWAY PARK

DESIGN OBJECTIVES

A M B I A N C E



AMBIANCE STUDY

CAPTURING THE SHEEN OF THE THROUGHBREDS' MUSCLES



AMBIANCE STUDY

CAPTURING THE AGILE NATURE OF THE THOROUGHBRED



ARLINGTON INTERNATIONAL RACECOURSE- CHICAGO, ILLINOIS

ARLINGTON INTERNATIONAL RACECOURSE IS A FAIRLY MODERN RACECOURSE BUILT WITHIN THE LAST DECADE AFTER A FIRE BURNT THE FORMER ARLINGTON RACECOURSE. THE OWNER OF THE RACECOURSE MADE THE DECISION TO BUILD A MORE PRESTIGIOUS FACILITY WITH UPSCALE MATERIALS AND DESIGN. THE DESIGN INCLUDES MANY SPECIAL SUITES THAT ENTERTAIN GROUPS, FAMILIES, OR CORPORATIONS. THE MARQUEE ON THE GREEN, A TENT THAT SITS ATOP A GRASSY HILL AND CAN HOLD 200 GUESTS, CAN BE RENTED BY A PARTY FOR A DAY SPENT AT THE RACES. A MEETING SUITE CAN BE UTILIZED FOR EMPLOYEES OR COMMUNITY GROUPS WITH ITS CAPABILITY TO BE TRANSFORMED INTO A FORMAL RECEPTION HALL.

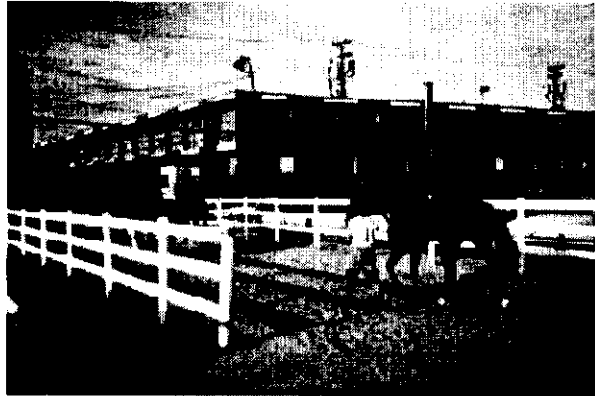
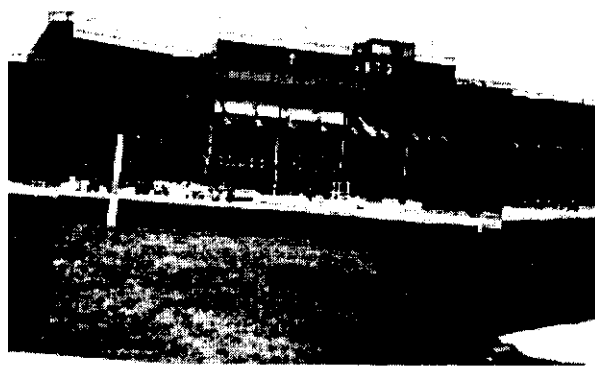


THE MAJORITY OF THE GRANDSTANDS ARE OPEN AIR TO ALLOW MORE INTERACTION WITH THE RACE ITSELF. THE SEATING RANGES FROM STADIUM SEATS TO FOLDABLE CHAIRS TO BOX SEATS AND FINALLY TO BENCHES. THIS VARIETY OF SEATS ARE DESIGNED TO ACCOMMODATE A DIVERSE NUMBER OF PATRONS. THE PADDOCK AREA IS ALSO VERY ACCOMMODATING. IT HAS AMPLE ROOM WITH TERRACES AND BALCONIES TO ALLOW A LARGE PERCENTAGE OF THE PATRONS TO VIEW THE SADDLING OF THE HORSES. THE GARDENS AROUND THE PADDOCK WERE FILLED WITH COLORFUL FLOWERS ENHANCING THE WELL MANICURED GREEN LANDSCAPE.

THE INTERIOR OF THE CLUBHOUSE/GRANDSTAND SEEMED A BIT TOO RITZY. THE COMMON MAN DIDN'T SEEM TO FIT IN AS WELL HERE. THE FLOORS WERE A TERRAZZO PATTERN AND THE COLUMNS, WALLS, CONCESSIONS, AND PARIMUTUAL WINDOWS WERE ALL WHITE. THIS CREATED AN ATMOSPHERE THAT WASN'T WELCOMING, IT WAS COLD.



PRECEDENTS



HAWTHORNE- CHICAGO, ILLINOIS

HAWTHORNE WAS LOCATED IN AN INDUSTRIAL END OF CHICAGO. NO TREES OR GREEN LAWNS WERE FOUND ANYWHERE. THE RACECOURSE WAS IMMEDIATELY ADJACENT TO SPORTSMAN RACECOURSE, WHICH ALLOWED THEM TO ALTERNATE RACE PERIODS AND TO SHARE BACKSTRETCH FACILITIES.

THE CLUBHOUSE/GRANDSTAND FITS IN WELL WITH ITS INDUSTRIAL NEIGHBORS MADE OF STEEL AND GLASS, A TRULY MODERNIST BUILDING. THE FACILITY USED TO BE OPEN AIR, BUT HAS SINCE BEEN CLOSED IN DUE TO THE MILD WEATHER IN CHICAGO. THE FACILITY WAS DEFINITELY UTILIZED BY THE COMMON MAN. THE CROWD SEEMED TO BELONG THERE, SORT OF REGULARS.

THE OUTDOOR FACILITIES WERE LACKING. THE TRACK TERRACE WAS FAIRLY FLAT AND COMPLETELY IN SHADE MAKING IT VERY UNCOMFORTABLE TO STAND OUTSIDE AND WATCH THE RACES. THE EXTERIOR PADDOCK WAS LOCATED IN THE INFIELD AND THUS WAS NOT UTILIZED DUE TO THE PROXIMITY OF THE PATRONS. THE PADDOCK THAT WAS USED, BUT LITTLE ALSO, WAS UNDER THE TRACK TERRACE. THIS SPACE WAS FUNCTIONAL BUT OFFERED NO CHARACTER OR NO NATURAL LIGHT IN ITS DESIGN. THE INTERIOR FACILITIES WERE LACKING ALSO. THE INTERIOR WAS DARK AND GLOOMY WITH NO COLOR OR BANNERS.

THE THOROUGHBREDS WERE PARADED FROM THE STABLES TO THE TRACK IN VIEW OF THE PATRONS. THIS WAS THROUGH THE PARKING LOT THOUGH, NOT THROUGH A CELEBRATIONAL GREEN CORRIDOR.



LADBROKE (DETROIT RACECOURSE)- DETROIT, MICHIGAN

LADBROKE WAS A COMFORTABLE, WELCOMING FACILITY. IT WAS SCALED TO THE INDIVIDUALS LEVEL THROUGH COLOR AND DETAIL. IT WAS NOT AS GLOOMY AS HAWTHORNE IN CHICAGO BECAUSE OF ITS GREEN COLUMNS, LIGHT FLOORS, AND COLORFUL BANNERS REPRESENTING THE SILKS OF THE JOCKEYS. THE FACILITY WAS FILLED WITH PEOPLE OF ALL SOCIAL CLASSES. IT SEEMED AS IF PEOPLE WERE MORE AT HOME.

AGAIN, THE TRACK TERRACE WAS FAIRLY FLAT AND A MINIMAL AMOUNT OF SEATING WAS AVAILABLE OUTDOORS. THIS COULD ALSO BE DUE TO THE MILD WEATHER IN DETROIT, BUT I FEEL IT IS UNFORTUNATE. I THINK THIS INDOOR SEATING STYLE HAS FORCED THE SPORT TO EVOLVE INTO MORE OF A TELEVISED SPORT WHERE PATRONS WATCH THE MONITOR SCREENS MORE THAN THE LIVE RACE.

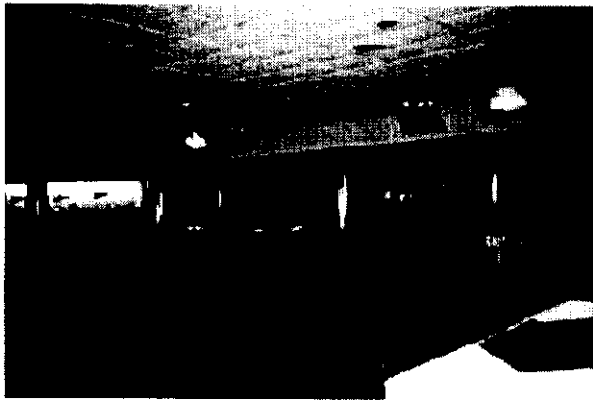
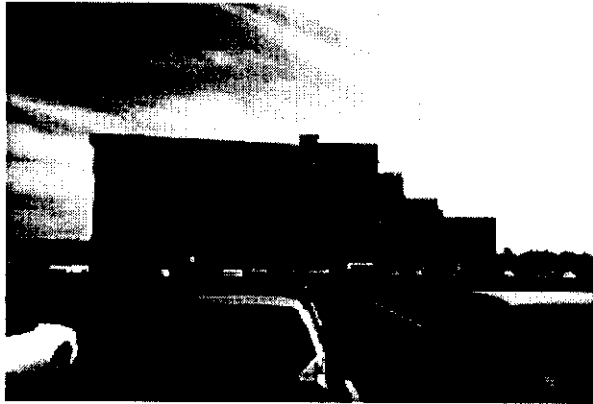


THE PADDOCK WAS LOCATED IN FRONT OF THE CLUBHOUSE AROUND THE WINNER'S CIRCLE. THIS MADE IT EASY FOR PATRONS TO BE INVOLVED WITH THE PRE-RACE ACTIVITIES BECAUSE IT WAS READILY IN SIGHT, BUT IT WAS A COLD SPACE. THERE WERE NO GREEN SPACE AROUND IT AND NOT MUCH COMFORTABLE STANDING ROOM ON ITS PERIPHERY.



ATLANTA METROPOLITAN RACEWAY PARK

PRECEDENTS



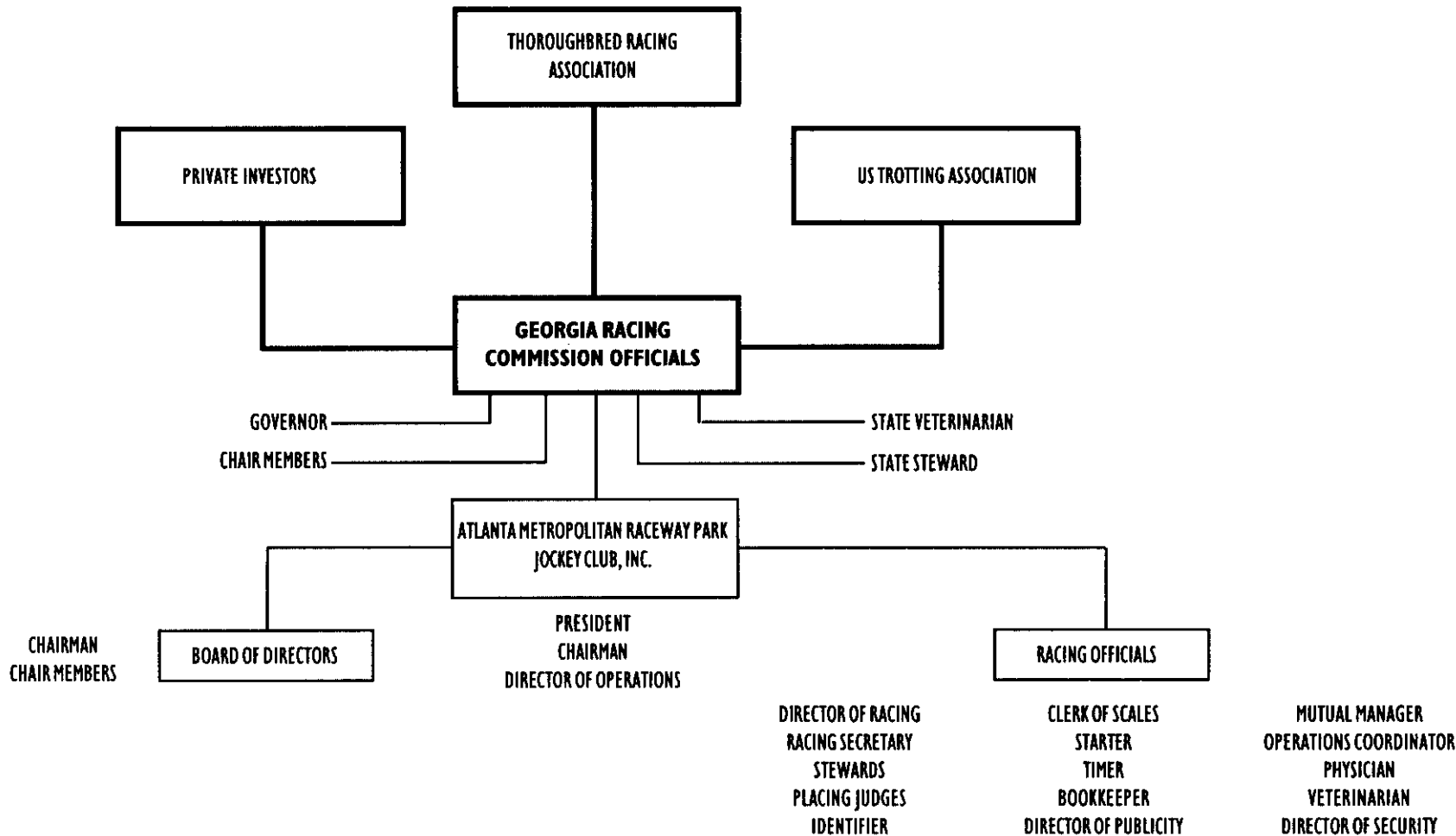
THISTLEDOWN- CLEVELAND, OHIO

THIS RACECOURSE WAS ORIGINALLY DESIGNED TO BE A HOSPITAL. DURING THE MIDDLE OF CONSTRUCTION, THE HOSPITAL DECIDED IT COULDN'T FUND THE PROJECT. THISTLEDOWN DECIDED TO BUY OUT THE PROJECT AND TURN IT INTO A RACECOURSE FACILITY, THUS THE DESIGN IS VERY NONTRADITIONAL OF THE TYPICAL STEEL AND GLASS CLUBHOUSES.

THE ENTRY INTO THE FACILITY, LIKE THE OTHER THREE, WAS A VAST CONCRETE PARKING LOT FILLED WITH CAR AFTER CAR. THE CLUBHOUSE/GRANDSTAND SAT ON THE FLAT SURFACE WITH NO NATURE SURROUNDING IT OR NO TRANSITION TO THE GROUND.

LIKE MANY OF THE OTHERS, THE RACETRACK HAD DECIDED AT SOME TIME TO ENCLOSE THEIR SEATING, ALLOWING AIR-CONDITIONING AND HEATING DEVICES TO SEPARATE THEM FROM THE OUTDOORS. THE INTERIOR WAS PURELY FUNCTIONAL. THE SPACES HAD BEEN RENOVATED TO ALLOW FOR THE CHANGING TIMES, A SIMUL-CAST LOUNGE, SUITES, AND TWO RESTAURANTS OR CLUBS WERE ADDED. THE PICTURE ON THE BOTTOM LEFT SHOWS ONE OF THE LARGE SUITES THAT IS AVAILABLE FOR PARTIES TO RENT FOR A DAY AT THE RACES. INCLUDED IS THEIR OWN PARIMUTUAL WINDOWS, A BAR AREA, TELEVISION MONITORS, AND A TRACKSIDE VIEW.

THE PADDOCK IS LOCATED ON THE LEFT END OF THE CLUBHOUSE. IT ATTEMPTED TO BRING A PICTURESQUE SETTING IN WITH FLOWERS AND GRASS. ENOUGH VIEWING SPACE WAS INCORPORATED ALSO.



ATLANTA METROPOLITAN RACEWAY PARK

ORGANIZATION



THE CLIENT IS REALLY MADE UP OF THREE BASIC ORGANIZATIONS: THE FINANCIAL ORGANIZATION OF PRIVATE INVESTORS, THE THOROUGHBRED RACING ASSOCIATION, AND THE US TROTTING ASSOCIATION. THE FINANCIAL ORGANIZATION OF PRIVATE INVESTORS IS USUALLY A DIVISION OF HORSE FARMS OR THOROUGHBRED BREEDERS. THE THOROUGHBRED RACING AND US TROTTING ASSOCIATION ARE ORGANIZATIONS THAT PROTECT THE RIGHTS OF THE THOROUGHBRED AND ENCOURAGE THE RACING FACILITY TO CONFORM TO THEIR STANDARDS OF ETIQUETTE IN ORDER TO PROMOTE QUALITY RACING.

EACH STATE CONTAINING THOROUGHBRED RACETRACKS WOULD HAVE A STATE RACING COMMISSION. THIS COMMISSION WOULD BE HEADED BY THE RACING GOVERNOR AND WOULD CONSIST OF CHAIR MEMBERS, A CHAIRMAN, A DIRECTOR, A STATE VETERINARIAN, AND A STATE STEWARD. DIRECTLY UNDER THIS COMMISSION WOULD BE THE FACILITY'S JOCKEY CLUB. THE JOCKEY CLUB WOULD HAVE A PRESIDENT, CHAIRMAN, AND A DIRECTOR OF OPERATIONS WHO OVERSEES THE BOARD OF DIRECTORS AND THE RACING OFFICIALS. THE BOARD OF DIRECTORS IS MADE UP OF MEMBERS AND A CHAIRMAN. THE RACING OFFICIALS CONSIST OF MANY OFFICES RANGING FROM THE DIRECTOR OF RACING TO STEWARDS TO CLERK OF SCALES TO MUTUAL MANAGER. THE TRACK VETERINARIAN, PHYSICIAN, AND PHOTOGRAPHER ARE ALSO A PART OF THE RACING OFFICIALS UNDER THE SUPERVISION OF THE TRACK'S JOCKEY CLUB.

THIS RELATIONSHIP STUDY IS BASED ON THE CIRCULATION PATTERNS OF THE PATRONS AND THE THOROUGHBREDS. THESE CIRCULATION PATTERNS SHOULD BE LINKED EITHER VISUALLY OR PHYSICALLY TO ALLOW INTERACTION AMONGST THE PATRON AND THE PROCESSIONAL PATH THE THOROUGHBRED TAKES BEFORE EACH RACE. THE RED DASHED ARROWS REPRESENT THE PATH OF THE THOROUGHBRED, WHILE THE PURPLE SOLID ARROWS REPRESENT THE PATH OF THE PATRON.

THE BUBBLES ARE PROPORTIONAL IN SIZE TO THE ACTUAL AREA REQUIRED FOR EACH FACILITY. THE DISTANCE BETWEEN EACH BUBBLE IS ALSO SIMILARLY PROPORTIONAL. THE YELLOW BUBBLES ARE REPRESENTATIVE OF THE PUBLIC SPACES, THE GREEN BUBBLES ARE THE OUTDOOR AREAS, AND THE TAN BUBBLES ARE THE HORSE AND EMPLOYEE HOUSING.

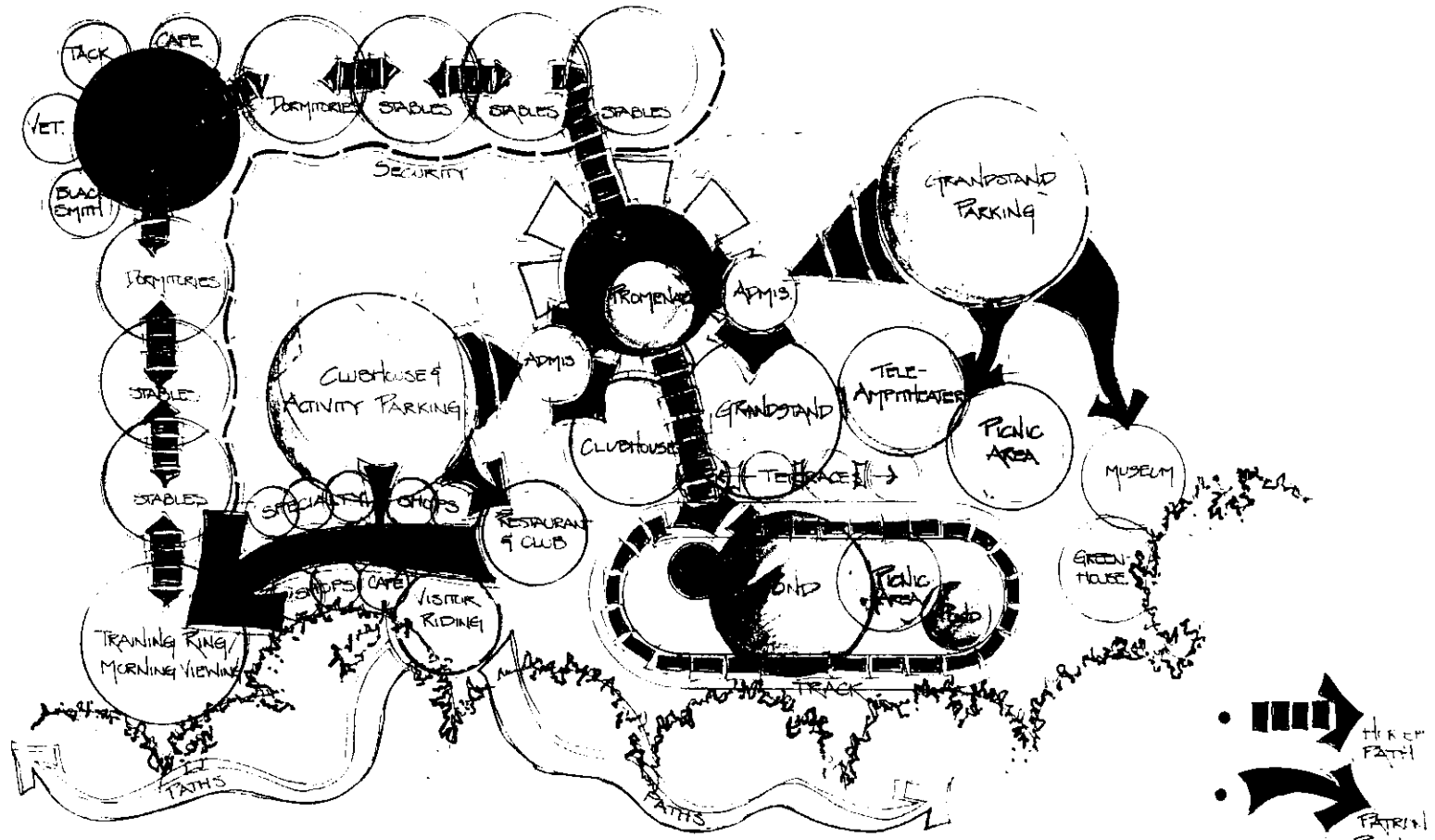
THE CONFIGURATION OF THIS LAYOUT IS RATHER SPREAD OUT. ONE SIDE OF THE RACEWAY PARK IS SNUGGLED AGAINST THE TREE LINE ALLOWING A VISUAL BACK-DROP BEYOND THE TRACK AND ACCESS TO WOODED PATHS FOR THE VISITOR RIDING. OPEN AREA LIES BETWEEN THE RACEWAY ACTIVITIES AND THE BACKSTRETCH FACILITIES. ALTHOUGH THIS OPEN, SPREAD OUT CONFIGURATION ALLOWS IMMEDIATE PARKING FOR CLUBHOUSE AND GRANDSTAND PATRONS, IT SEEMS TO BE TOO DISCONNECTED. A CLOSE PROXIMITY WOULD BE MORE BENEFICIAL TO ALLOW A GREATER PATRON PARTICIPATION IN VIEWING THE PRE-RACE ACTIVITIES.



ATLANTA METROPOLITAN RACEWAY PARK

RELATIONSHIPS

S T U D Y # 1

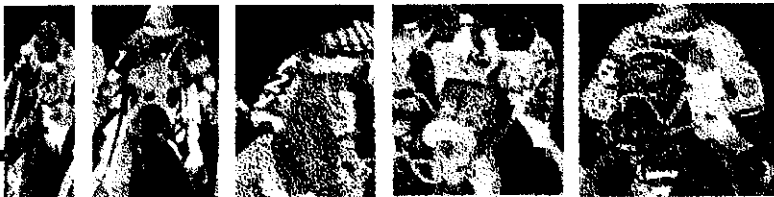


RELATIONSHIP STUDY #1

THIS RELATIONSHIP STUDY IS MUCH MORE CONNECTED. THE FACILITIES FIT SNUGLY INTO A UNIFIED PARK ATMOSPHERE. THE PROCESSION OF THE HORSE THROUGH THE SITE, REPRESENTED IN RED DASHED ARROWS, IS VERY DOMINATE. THE HORSES ARE STABLED IN A SPREAD OUT MANNER, CREATING A HORSE VILLAGE. ALL THE THOROUGHBREDS' PATHS MEET OR COME TOGETHER AS EACH ONE IS TRAINED IN THEIR MORNING WORKOUT. THIS IS ALSO THE AREA WHERE THEIR SUPPORT SYSTEMS, LIKE THE VETERINARIAN, THE BLACKSMITH, AND THE TACK ROOM ARE LOCATED. THEN THE THOROUGHBREDS MARCH IN A LINEAR FASHION TO THE PADDOCK AND ON TO THE TRACK.

THE MOVEMENT OF THE PATRONS, REPRESENTED IN PURPLE SOLID ARROWS, IS MUCH MORE MEANDERING THAN THE THOROUGHBREDS. THE OPPORTUNITIES FOR THE PATRONS TO PARTICIPATE IN A VARIETY OF ACTIVITIES IS APPARENT. THE VISUAL LINKAGE OF THE PATRON WHILE IN THE VILLAGE TO THE THOROUGHBRED WHILE ON HIS PROCESSION TO THE TRACK NEEDS TO BECOME STRONGER. THIS SCHEME ALLOWS MORE ACTIVITY TO TAKE PLACE AROUND THE BACKSTRETCH FACILITIES DRAWING MORE PATRONS INTO THE SPACE.

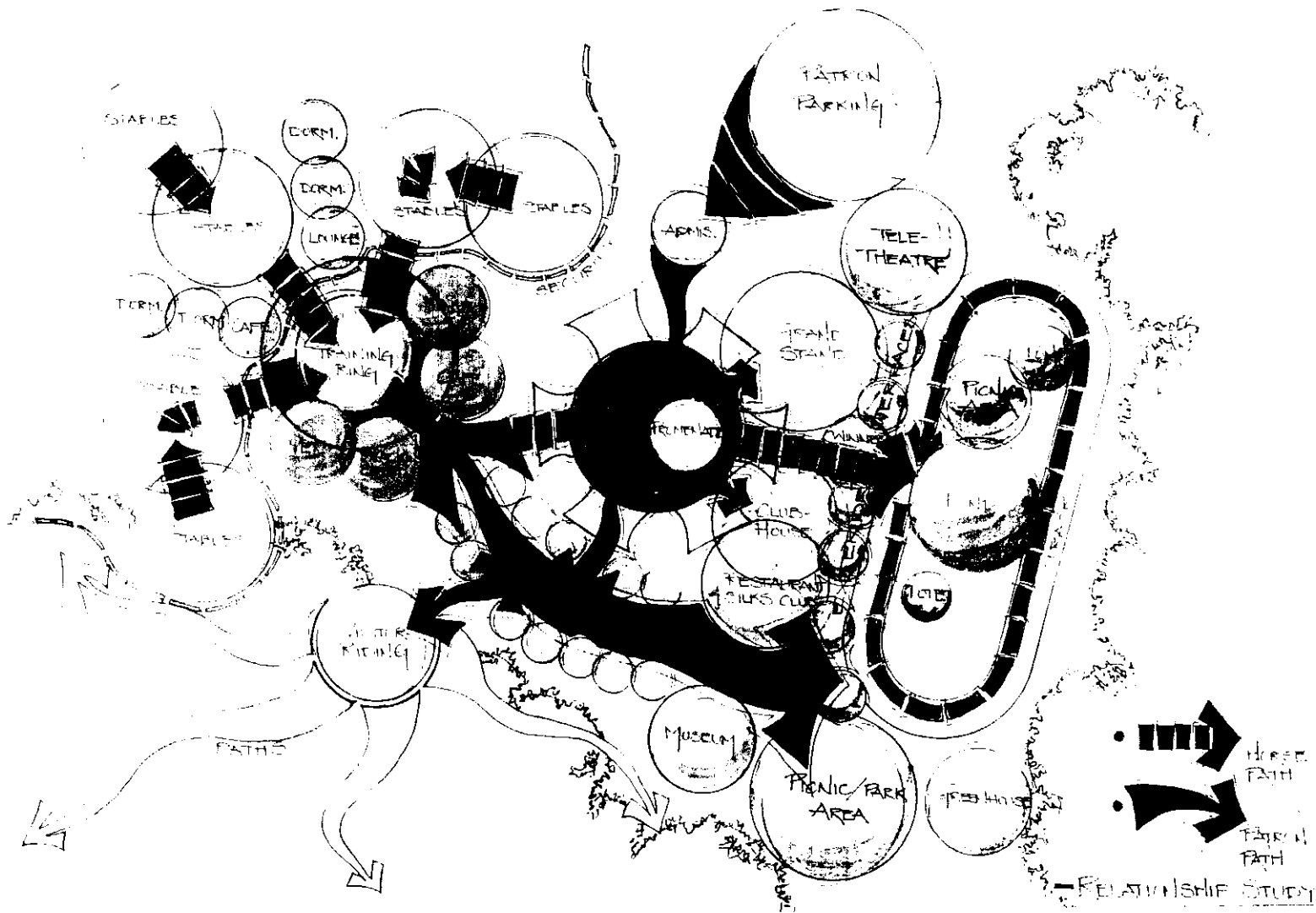
THIS SCHEME ALSO DRAWS OUT FOUR FOCAL POINTS OF THE PARK: THE BACKSTRETCH, THE VILLAGE SPINE, THE PADDOCK, AND THE TRACK.

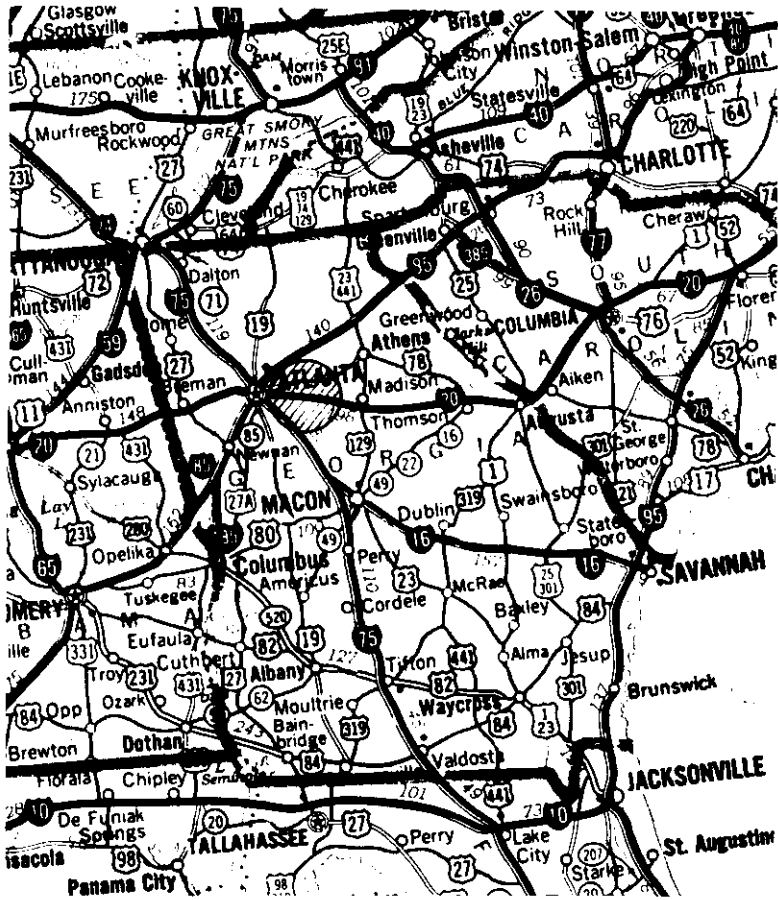


ATLANTA METROPOLITAN RACEWAY PARK

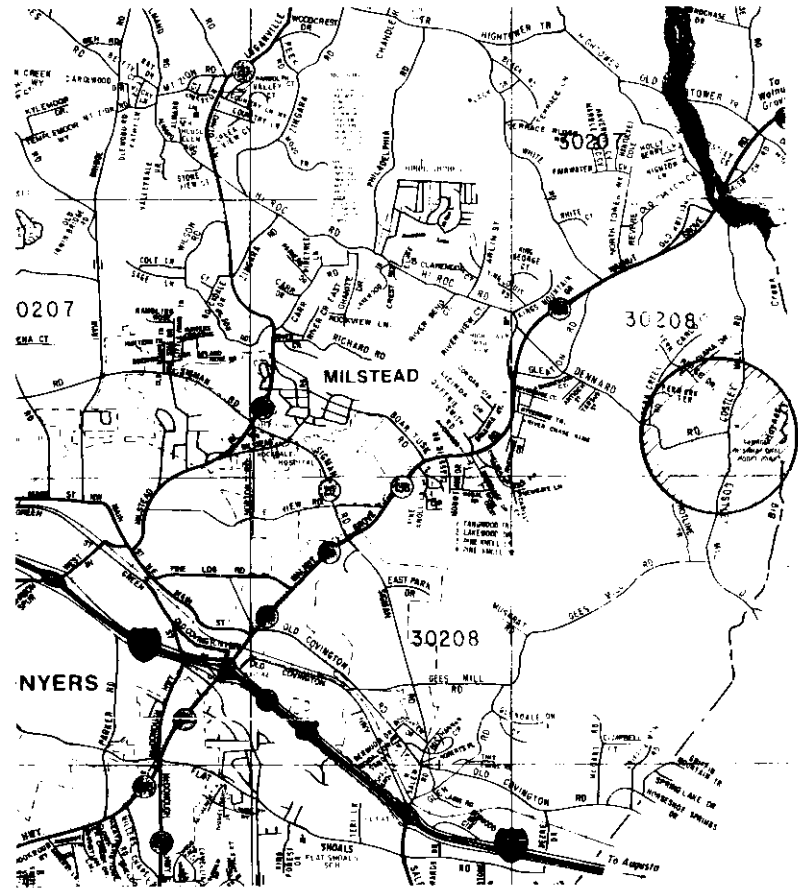
RELATIONSHIPS

S T U D Y # 2





**RELATIONSHIP TO GEORGIA AND ITS
NEIGHBORING STATES**



**RELATIONSHIP TO CONYERS AND ITS
NEIGHBORING CITIES**



ATLANTA METROPOLITAN RACEWAY PARK

S I T E D A T A

THE SITE REQUIREMENTS DETERMINED BY THE PRELIMINARY RESEARCH INDICATED A NEED FOR AT LEAST TWO HUNDRED ACRES OF LAND TO ACCOMMODATE THE NEARLY TWO MILLION GROSS SQUARE FEET OF FACILITIES. WITH THE PROGRAM ALSO ENTAILING A NEED FOR A PICTURESQUE SITE WITH ROLLING TERRAIN, A CONTRAST OF WOODED AREA AND VAST OPENNESS, A GRAND BACKDROP OF LANDSCAPE, AND A PLEASANT APPROACH TO THE SITE, APPROXIMATELY THREE AND A HALF TO FOUR HUNDRED ACRES WAS MORE APPROPRIATE.

ANOTHER GOAL FOR THIS SITE WAS TO TEACH THE COMMUNITY AND ITS USERS ABOUT THE SPORT ITSELF. LOCATING IT NEAR BREEDING FARMS AND OTHER HORSE RACING FACILITIES, SUCH AS AN EQUESTRIAN OR CROSS COUNTRY FACILITY, WILL EXPAND THE OPPORTUNITY TO SHOW HOW THOROUGHBREDS ARE BRED, RAISED, AND CHOSEN TO RACE AND TO SHOW OTHER TYPES OF RACING. THESE OTHER HORSE SPORTS WILL ALSO BENEFIT FROM THE NUMBER OF PATRONS BEING INTRODUCED TO THEIR SPORT.

GEORGIA WAS THE STATE CHOSEN TO HOUSE THE THOROUGHBRED RACETRACK. IT IS A LIVELY AND FESTIVE STATE DUE TO ITS HOSTING THE 1996 OLYMPICS. THE PROCESSIONS AND CELEBRATIONS OF THE CEREMONIES AND SPORTING EVENTS HAVE THE CHARACTER AND AMBIANCE THAT WILL BE WONDERFUL TO CARRY OUT INTO A THOROUGHBRED RACETRACK. THIS STATE CURRENTLY HAS NO THOROUGHBRED RACING FACILITIES. THE MUTUAL EARNINGS THAT THE RACETRACK WILL BRING IN WILL ECONOMICALLY BENEFIT THE STATE'S FUNDS AS WELL AS GIVE PRIDE AND ACKNOWLEDGMENT TO THE STATE. GEORGIA SITS AMIDST ITS THREE NEIGHBORING STATES, TENNESSEE, ALABAMA, AND SOUTH CAROLINA, WHO

ALSO DO NOT HAVE THOROUGHBRED RACING. THESE STATES WILL PROVIDE MORE AREA FOR POTENTIAL VISITORS.

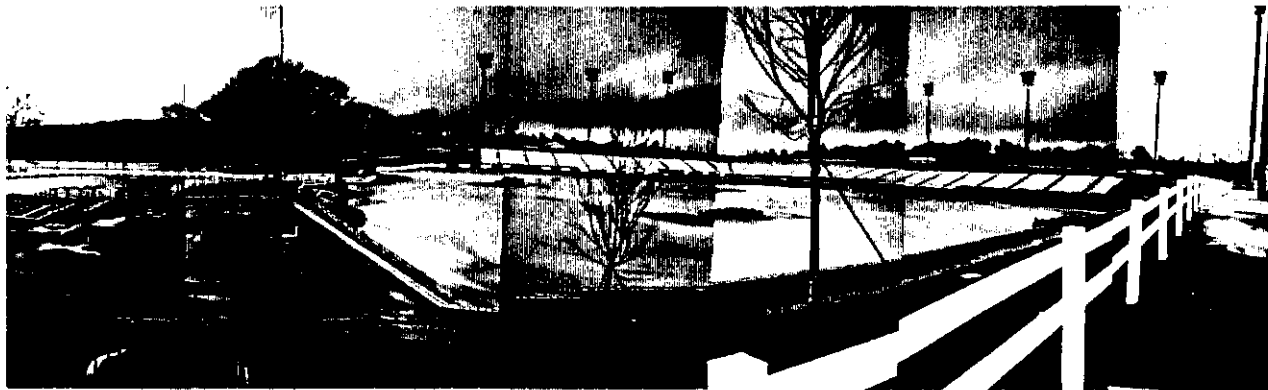
THE SURROUNDING AREA OF ATLANTA IS THE AREA CHOSEN TO HOUSE THE RACETRACK. ATLANTA IS A YOUTHFUL CITY WITH A GROWING POPULATION. IT CONTAINS AN MBA TEAM, THE BRAVES, AN NBA TEAM, THE HAWKS, AND AN NFL TEAM, THE FALCONS, ALREADY AND A THOROUGHBRED RACETRACK WILL ADD ANOTHER DIMENSION TO THIS SPORT-CENTERED CITY. THE AREA OUTSIDE OF ATLANTA IS FULL OF FOOTHILLS AND ROLLING TERRAIN WHICH IS IDEAL FOR THE BEAUTIFUL BACKDROP OF THE FACILITY. THE SITE IS ALSO CONNECTED TO DOWNTOWN THROUGH THE MARTA TRANSPORTATION SYSTEM ALLOWING EASY ACCESS AND FEWER CARS ON THE SITE TO MAINTAIN THIS PICTURESQUE RACING COMMUNITY.

CONYERS, THE AREA JUST TWENTY MILES SOUTHEAST OF ATLANTA HOUSES THE HORSE BREEDING COMMUNITY AND HORSE FARMS. THIS AREA IS CLOSE TO THE VITAL CITY OF ATLANTA, BUT SET WITHIN A RURAL ATMOSPHERE AND BEAUTIFUL LANDSCAPE. THIS SITE WILL GIVE THE OPPORTUNITY TO INTERTWINE THE EVENTS IN A THOROUGHBRED'S LIFE THAT THE RACE FAN WOULD NEVER USUALLY BE SHOWN WITH THE EXCITEMENT OF A FESTIVE, THOROUGHBRED RACEWAY PARK. A COMBINATION THAT COULD ENHANCE BOTH WORLDS AND CREATE A RACETRACK LIKE NON SEEN BEFORE.

THIS SITE IS CONNECTED TO MANY OTHER NEARBY CITIES AND STATES THROUGH EASY ACCESS OF THE HIGHWAY SYSTEM AND INTERSTATES, AS THE MAPS SHOWS ON THE LEFT.



ENTRY INTO THE GEORGIA INTERNATIONAL HORSE PARK

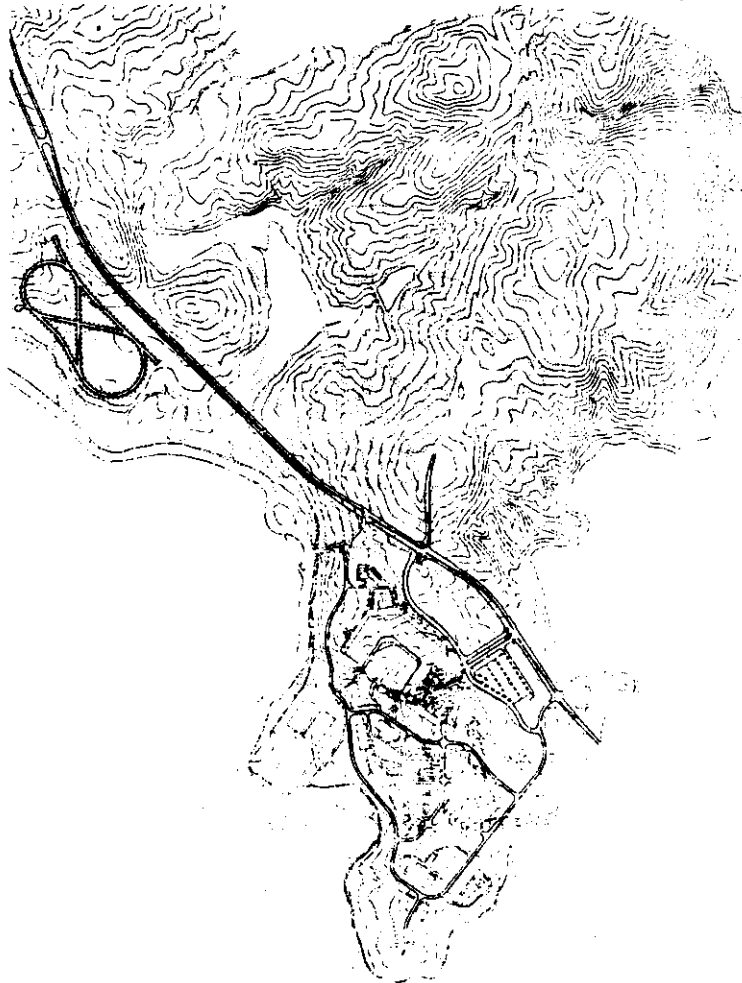


OLYMPIC EQUESTRIAN ARENA



ATLANTA METROPOLITAN RACEWAY PARK

S I T E D A T A



**RELATIONSHIP OF SITE TO THE GEORGIA
INTERNATIONAL HORSE PARK**

ATLANTA HAS CAPTURED THE 1996 OLYMPICS AND THEREFORE, THE EQUESTRIAN EVENTS, ARENA STYLE AND CROSS COUNTRY, AND THE MOUNTAIN BIKE RACE WILL TAKE PLACE AT THE GEORGIA INTERNATIONAL HORSE PARK IN CONYERS, GEORGIA. THE ATLANTA METROPOLITAN RACEWAY PARK WILL BE NESTLED ON THE SITE BETWEEN THE ARNOLD PALMER GOLFCOURSE AND THE EQUESTRIAN FACILITY AND DOWN THE ROAD FROM THE STEEPLE CHASE COURSE. THE MAP TO THE LEFT SHOWS THE PROXIMITY OF THE RACEWAY PARK TO THESE OTHER FACILITIES.

THE PATRONS ATTENDING THE RACEWAY PARK WILL TRAVEL THROUGH THE WOODED PARK ALONG A ROLLING ROAD WIDE ENOUGH TO ACCOMODATE LARGE VEHICULAR TRAFFIC. THE PICTURE ON THE TOP OF THE FAR LEFT SHOWS THIS ENTRY SEQUENCE. THE SURROUNDING NATURE ALLOWS A SCENIC DRIVE.

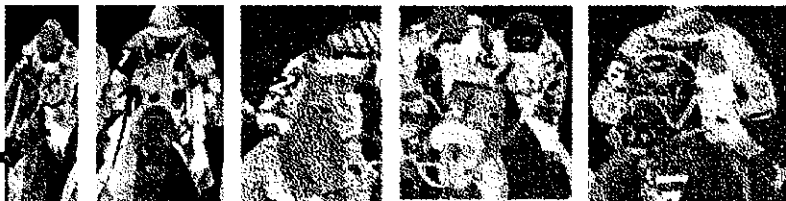
THE PICTURE ON THE BOTTOM OF THE FAR LEFT SHOWS THE OLYMPIC EQUESTRIAN COURSE DESIGNED FOR THE ARENA STYLE EVENT UNDER CONSTRUCTION. THE GEORGIA RED CLAY IS DOMINANT IN THE COLOR SCHEME OF THE AREA.



**EXISTING SITE
TREE COVER AND CONTOURS**



**SITE SELECTION
OPTION A**



ATLANTA METROPOLITAN RACEWAY PARK

SITE SELECTION



**SITE SELECTION
OPTION B**



**SITE SELECTION
OPTION C**

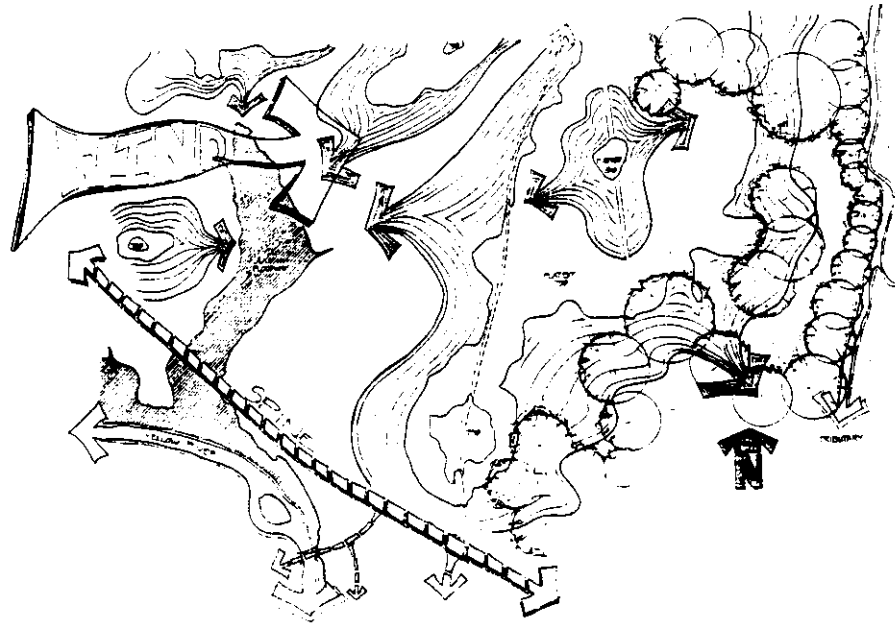
ANALYSIS OF SITE

	CLUSTER PLAN	LINEAR PLAN FOR SITE	BEST DESIGN VIEW	MOST LAND FAMILIAR	LEAST CUT	LEAST INFILL	HIGHEST ELEVATION UTILIZED - TRACK	FURTHEST AWAY FROM PLEASANT CAR APPROACH	CUTS BACK LEAST TREES NEAR RD	CUTS BACK BEHIND TRACK	WEST WIND BLOOD WHEN IN STANDS	AFTERNOON SUN ON TERRACE	MORNING SUN IN STANDS ONLY	MORNING & AFTERNOON SUN EXPOSURE (WARMER IN WINTER)
OPTION A	0	2	2	0	0	2	0	2	2	2	2	1	2	0
OPTION B	0	2	0	2	1	1	2	2	1	0	2	1	2	0
OPTION C	2	0	1	1	2	0	1	1	1	1	1	2	0	2

**MATRIX
ANALYSIS OF SITE OPTIONS**



ATLANTA METROPOLITAN RACEWAY PARK

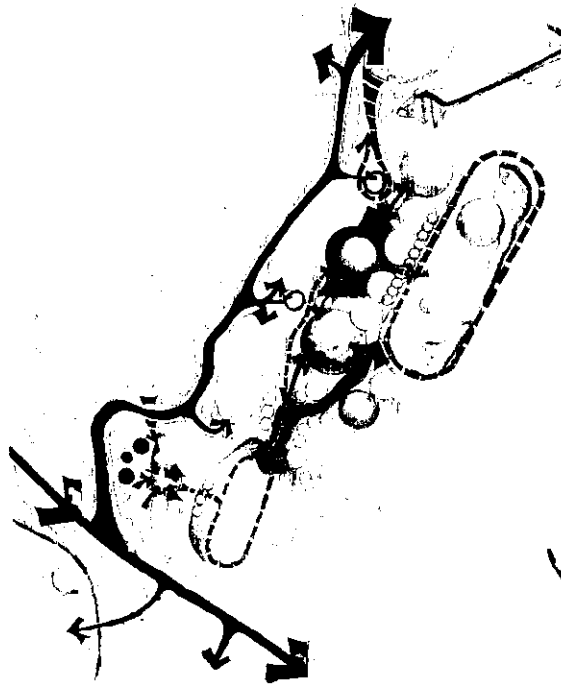


SITE ANALYSIS

THE MATRIX LOCATED ON THE FAR LEFT IS AN ANALYSIS BASED ON THE EFFECTS THE SUN, WIND, SIGHT LINES, AND EXCAVATION WILL HAVE ON THE SITE. THIS ANALYSIS IS NOT DESIGNED TO MAKE THE DECISION OF WHICH OPTION TO CHOOSE, BUT PRIMARILY TO RECORD MY OBSERVATIONS. THE RATING SYSTEM THAT I HAVE CHOSEN TO RANK THEM IS: 2-BEST CHARACTERIZES, 1-SOMEWHAT CHARACTERIZES, AND 0-BY NO MEANS CHARACTERIZES. THE TOTALS OF EACH OF THESE OPTIONS ARE VERY CLOSE IN NUMBER. OPTION A TOTALS 16, OPTION B TOTALS 16, AND OPTION C TOTALS 14.

SINCE I COULD NOT DETERMINE A SITE BASED ON THIS, I REEXAMINED THE SITE ANALYSIS, FOUND AT THE LEFT, AND MY DESIGN OBJECTIVES. MY DESIGN OBJECTIVES INCLUDED A PLEASANT ENTRY CORRIDOR, A TREE-LINED BACKGROUND, A SETBACK FROM THE MAIN SPINE ROAD OF THE HORSE PARK, AND ROLLING LAND. THE OPPORTUNITY TO SET THE CLUBHOUSE/GRANDSTAND ON TOP OF A HILL TO ALLOW IT TO NESTLE INTO THE LANDSCAPE WAS A CONSIDERATION. THE NEED FOR TWO LARGE AND MOSTLY FLAT AREAS THAT HOUSE THE TRAINING TRACK AND THE RACING TRACK WAS ALSO A CONSIDERATION.

AFTER CONSIDERING ALL OF THIS, OPTION B WAS CHOSEN AS THE SITE FOR THE CONFIGURATION AND PLACEMENT OF THE RACING TRACK AND ITS CLUBHOUSE/GRANDSTAND WOULD SIT ON ITS WEST SIDE.



**SCHEMATIC DESIGN
BUBBLE DIAGRAM**



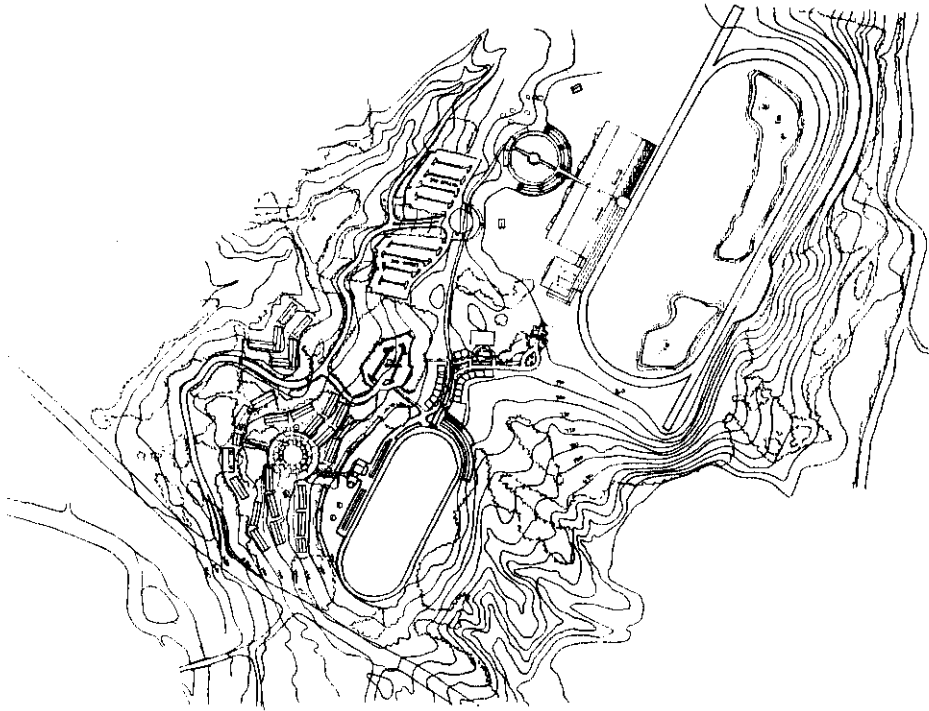
ATLANTA METROPOLITAN RACEWAY PARK

DESIGN SOLUTION

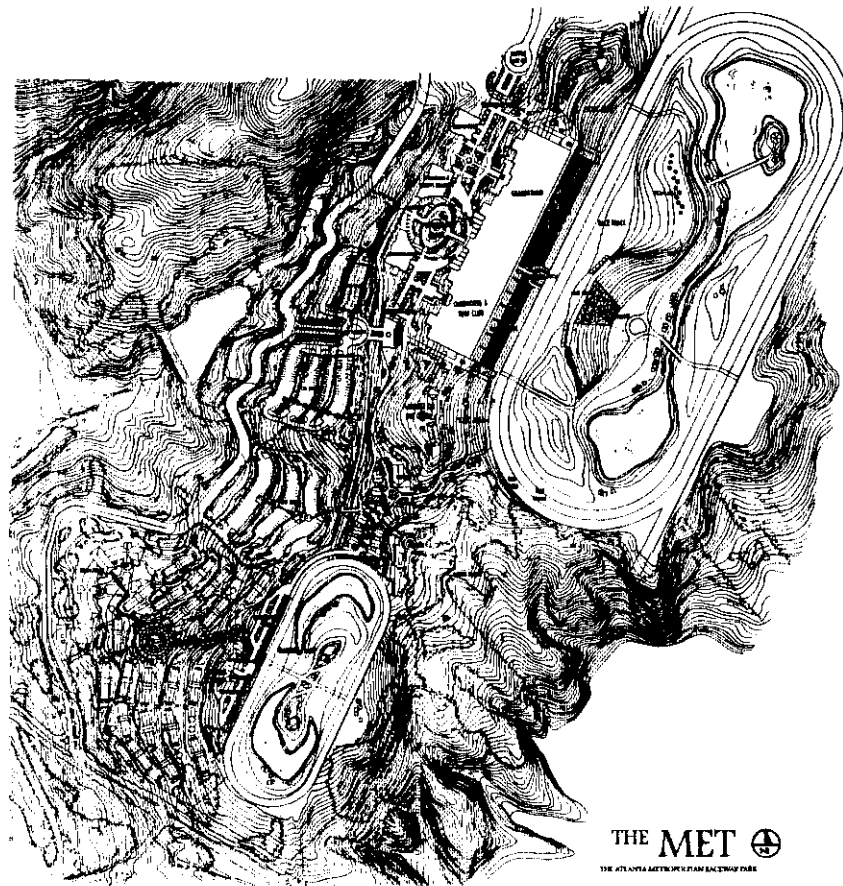
MASTER PLAN

THE SCHEMATIC MASTERPLAN FOR THE SITE, BEGAN WITH THE PLACEMENT OF THE RACING TRACK AND TRAINING TRACK. THESE TWO FACILITIES REQUIRED THE MOST AMOUNT OF NEARLY FLAT LAND AND THEREFORE WILL REQUIRE THE MOST EXCAVATING DUE TO THE ROLLING NATURE OF THE SITE. THE TWO PREVIOUS RELATIONSHIP STUDIES DIAGRAMS WERE UTILIZED TO DETERMINE THE ULTIMATE PLACEMENT OF FACILITIES. THESE FACILITIES WERE LINKED WITH THE CIRCULATION PATTERNS OF THE VEHICLE IN PURPLE, THE PATRON IN ORANGE, AND THE THOROUGHBRED IN RED. THE GREEN TREE COVER REPRESENTS THE EXISTING TREE COVER. THIS TREE COVER ALSO DETERMINED THE LAYOUT OF THE FACILITIES IN ORDER TO SAVE AS MANY TREES AS POSSIBLE.

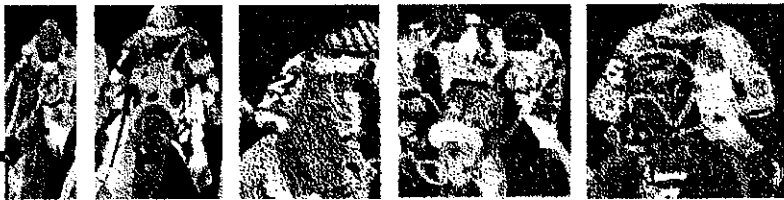
THE PLAN BECOMES A MUCH MORE LINEAR CONFIGURATION THAN THE PREVIOUS RELATIONSHIP DIAGRAMS. THIS IS DUE TO FOLLOWING THE CURVES OF THE HILL, BUILDING THE FACILITIES ON THE RIDGE, AND MAKING A MORE COHERENT CIRCULATION PATH FROM THE TRACK AREA TO THE BACKSTRETCH. A VARIETY OF CHOICES FOR MEANDERING ALONG WHICHEVER PATH THE PATRON CHOOSES IS STILL EXISTENT. PARKING BECOMES MORE SEPARATED FROM THE MIDDLE OF THE RACEWAY PARK ALSO. A FEW LOTS, MOSTLY FOR VIP AND CLUBHOUSE MEMBERS, ARE INCORPORATED ALONG THE ROAD INTO THE PARK, BUT THE MAJORITY OF THE PARKING IS LOCATED NORTH OF THE PARK AT THE TERMINATE OF THE ROAD INTO THE PARK. THIS WOODED LOT ALLOWS THE SEA OF CARS TO BE HIDDEN FROM THE VIEW SURROUNDING THE PARK. A SHUTTLE SYSTEM OF BUSES OR TROLLEY-STYLE PEOPLE MOVERS WILL DELIVER PATRONS TO THE GRANDSTAND ENTRANCE PLAZA. THIS SHUTTLE ROAD IS REPRESENTED IN THE SCHEMATIC DESIGN BUBBLE DIAGRAM AS THE DASHED PURPLE ARROW. THE SHUTTLE ROAD WOULD TRAVEL THROUGH A SCENIC DRIVE AND PAST A WATERFALL THAT TRICKLES DOWN INTO THE TRIBUTARY IN ORDER TO TRANSFORM THE PATRONS' SPIRITS FOR A WONDERFUL DAY AT THE RACES.



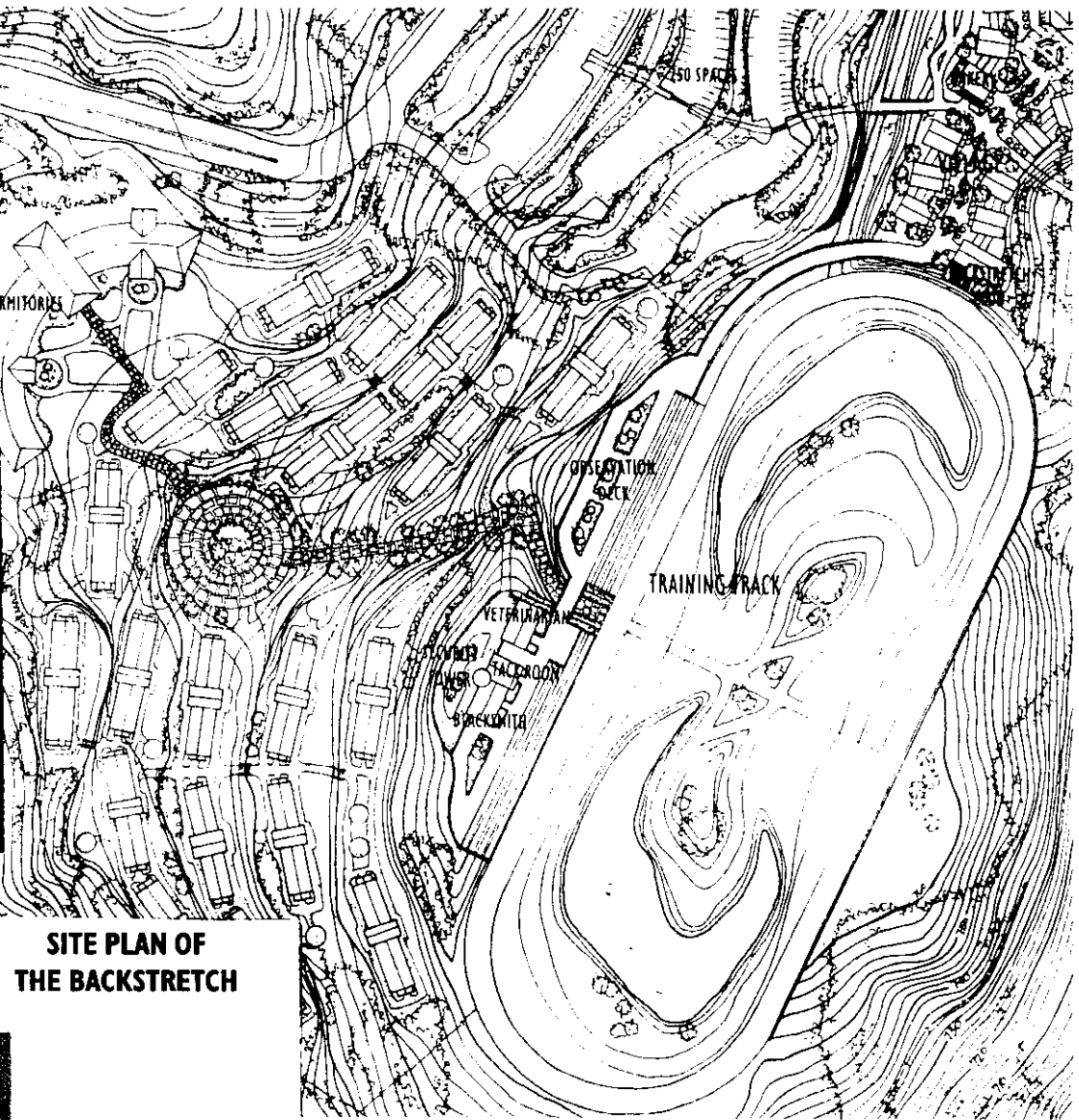
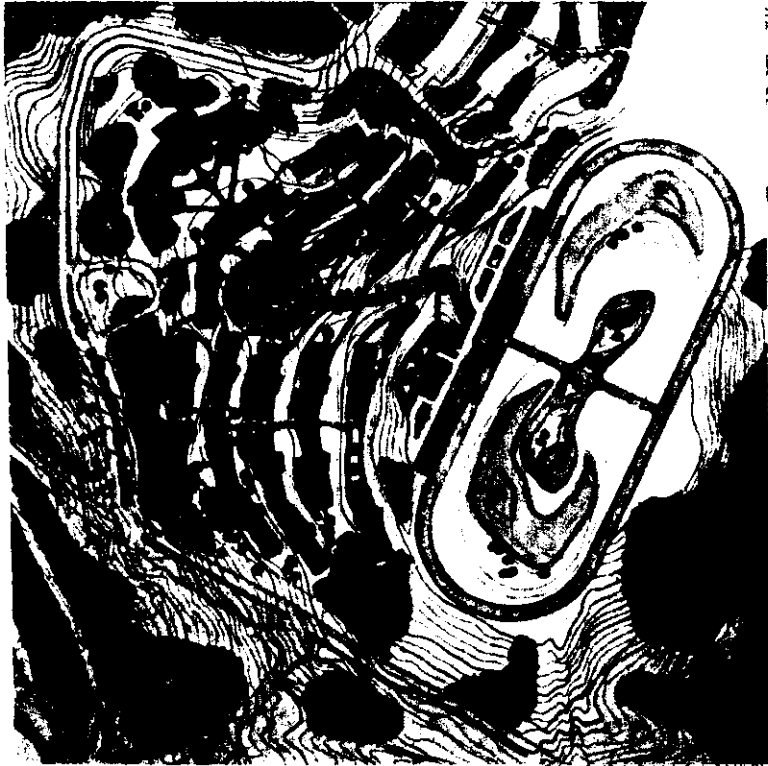
SCHEMATIC DESIGN



**MASTERPLAN OF
ATLANTA METROPOLITAN RACEWAY PARK**



ATLANTA METROPOLITAN RACEWAY PARK



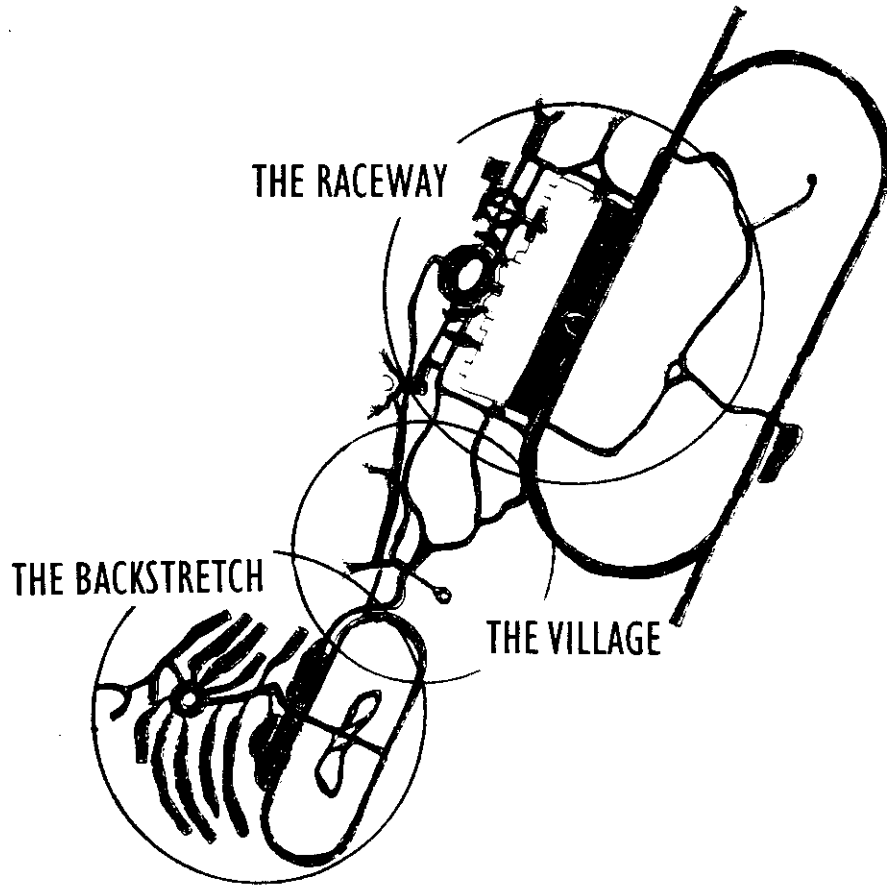
**SITE PLAN OF
THE BACKSTRETCH**



ATLANTA METROPOLITAN RACEWAY PARK

DESIGN SOLUTION

MASTER PLAN



**PROCESSIONAL PATHS
AND THE THREE MAIN FOCAL POINTS**

THE FINAL MASTERPLAN FOR THE ATLANTA METROPOLITAN RACEWAY PARK IS LOCATED ON THE FAR LEFT. THE MASTERPLAN SHOWS THE BUILDINGS, THE PLAZAS, THE GARDENS, AND THE TRACKS. THE CLUBHOUSE AND VIP PARKING LOTS ALONG THE ENTRY ROAD ARE TERRACED UP THE HILL FOLLOWING THE CONTOURS OF THE SITE. EACH PARKING LEVEL IS APPROXIMATELY TEN FEET HIGHER THAN THE ONE NEXT TO IT, WITH TREES AND A STONE RETAINING WALL IN BETWEEN EACH. THIS ALLOWS A SERENE AND INTIMATE ATMOSPHERE AND BREAKS UP THE MONOTONY OF THE PARKING ROWS. THE PATHS FROM THESE LOTS ARE ALL COLLECTED ON A CENTRAL PATH THAT OVERLOOKS THE HORSE VALLEY RUNNING SOUTH FROM THE TRAINING TRACK TO NORTH WHERE THE RACING TRACK IS. THEREFORE, PATRONS CAN GET A TASTE OF THE PROCESSION THAT THEY WILL BE ENCOUNTERING IN THE PARK BEFORE THEY EVER GET IN. THE GRANDSTAND PARKING OR THE SHUTTLE DRIVE IS NOT INCLUDED ON THIS MASTERPLAN. IT IS NOT DEVELOPED FURTHER THAN IN THE SCHEMATIC BUBBLE DESIGN, BUT IT HAS NOT CHANGED.

THE DRAWING ON THE LEFT DEFINES THE PROCESSIONAL PATHS OF THE THOROUGHBRED AND THE PATRON IN RELATION TO ONE ANOTHER WHILE IN THE PARK. THE OPPORTUNITY FOR THE PATRON TO WATCH THE PARADING OF THE THOROUGHBREDS BEFORE EACH RACE IS PROVIDED WITH VISUALLY LINKING THE TWO PATHS, BUT THE SECURITY OF THE PRICELESS THOROUGHBRED IS MAINTAINED BY SEPARATING THE TWO PATHS ON VARYING ELEVATIONS AND WITH FENCES.

THIS DRAWING ALSO DEFINES THE THREE MAIN FOCAL POINTS ON THE SITE: THE BACKSTRETCH, THE VILLAGE, AND THE RACEWAY. THE PROCESSIONAL PATHS TRAVEL THROUGH EACH OF THE FOCAL POINTS ALLOWING AN INTERACTION THROUGH ALL OF THEM.

DESIGN SOLUTION

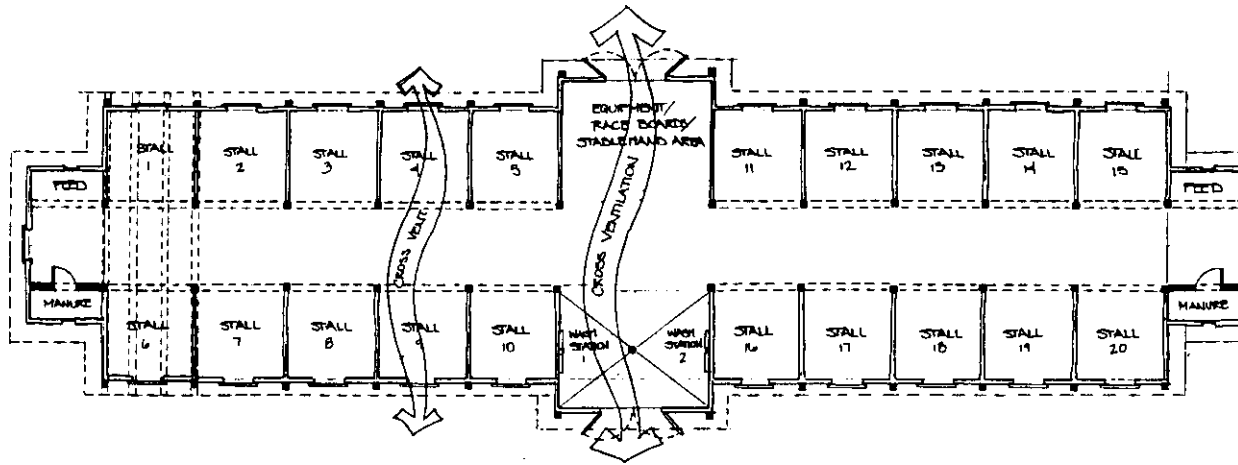
THE BACKSTRETCH

THE FIRST AREA THAT I CONCENTRATED ON AFTER THE MASTERPLAN WAS DESIGNED IS THE BACKSTRETCH. THIS AREA IS USUALLY HIDDEN BEHIND THE SCENES FROM THE PUBLIC, USUALLY ACROSS THE TRACK FROM THE CLUBHOUSE/GRANDSTAND ON THE "BACKSTRETCH" OF THE TRACK. I CHOSE TO PLACE THIS AREA IN AN ACCESSIBLE DISTANCE TO THE MAIN TRACK, THE PUBLIC REALM, IN ORDER TO CREATE THE GREATEST OPPORTUNITY FOR RACE PATRONS TO INTERACT WITH THE ACTIVITIES THEY MIGHT OTHERWISE OVERLOOK. THE PATRON IS EXPOSED TO THE EXISTENCE OF THIS AREA WHILE IN THEIR CAR AS THEY ENTER THE RACEWAY DRIVE INTO THE PARK. THE DRIVE IS LOCATED AT THE BOTTOM OF THE HILL AND THE VIEW TO THE DRIVERS' RIGHT IS UP THE HILL WITH THE STABLES SITTING ON IT LIKE A HILL TOWN. ONLY GLIMPSES OF THIS HILL TOWN CAN BE SEEN THROUGH THE SPOTTED WOODED AREAS MAKING THE DRIVERS' ANTICIPATION BUILD FOR WHAT IS TO COME.

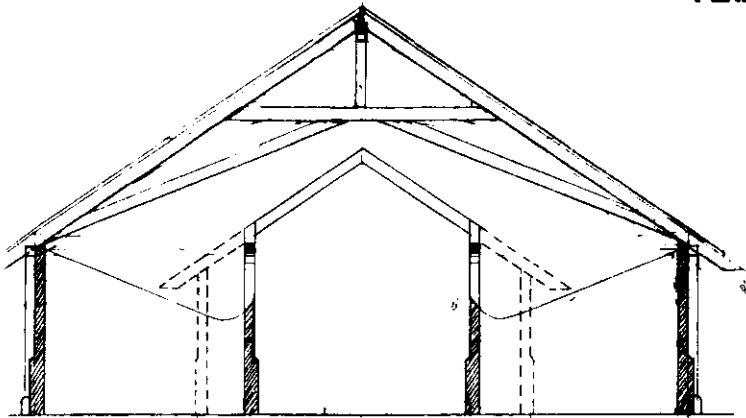
THE STABLES WIND AROUND THE HILLSIDE ON STEPPED TERRACES. THIS ALLOWS FOR MORE WIND BETWEEN EACH STABLE TO CROSS VENTILATE THE THOROUGHBREDS IN THE HEAT OF THE SUMMER. THIS ALSO CREATES EASY VIEWING INTO THE WORLD OF THE STABLES THROUGH OBSERVATION DECKS FOR THE PUBLIC. IN THE MORNING THE HORSES TRAVEL FROM THEIR STABLES ALONG THEIR LEVEL TERRACE, MEET IN THE CIRCULAR HORSE PLAZA WHERE VIP PATRONS CAN VIEW THEM, AND THEN TRAVEL UP THE PATH FOR A TRAINING WORKOUT. THIS PATH CAN BE FURTHER TAKEN UP TO THE BLACKSMITH, VETERINARIAN, OR TACK ROOM AREA OR CAN BE FOLLOWED TO THE TRAINING TRACK. THE PUBLIC CAN VIEW THE THOROUGHBREDS AS THEY MAKE THEIR JOURNEY OR WHILE THEY ARE RUNNING ON THE TRACK. THE OBSERVATION DECK IS CONNECTED TO THE TRAINING TRACK TERRACES WHICH ALLOW PATRONS TO WATCH BOTH.



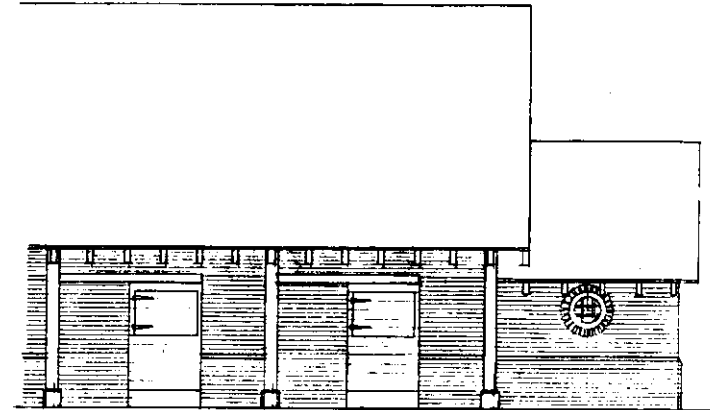
**SITE SECTION OF
THE BACKSTRETCH**



PLAN OF A TYPICAL STABLE



SECTION OF A TYPICAL STABLE



ELEVATION OF A TYPICAL STABLE



ATLANTA METROPOLITAN RACEWAY PARK

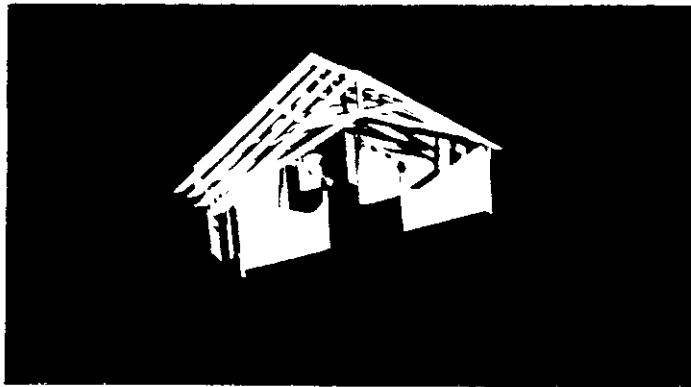
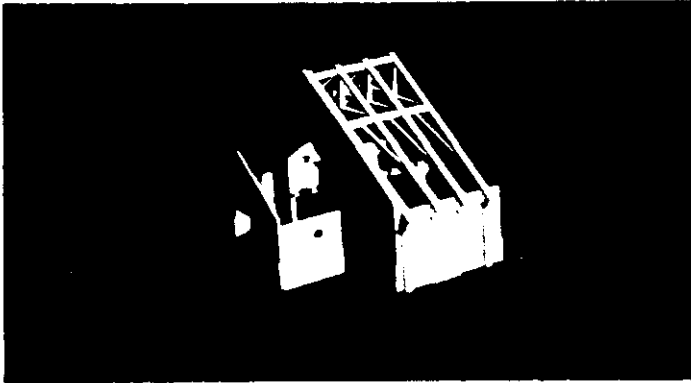
DESIGN SOLUTION

THE BACKSTRETCH

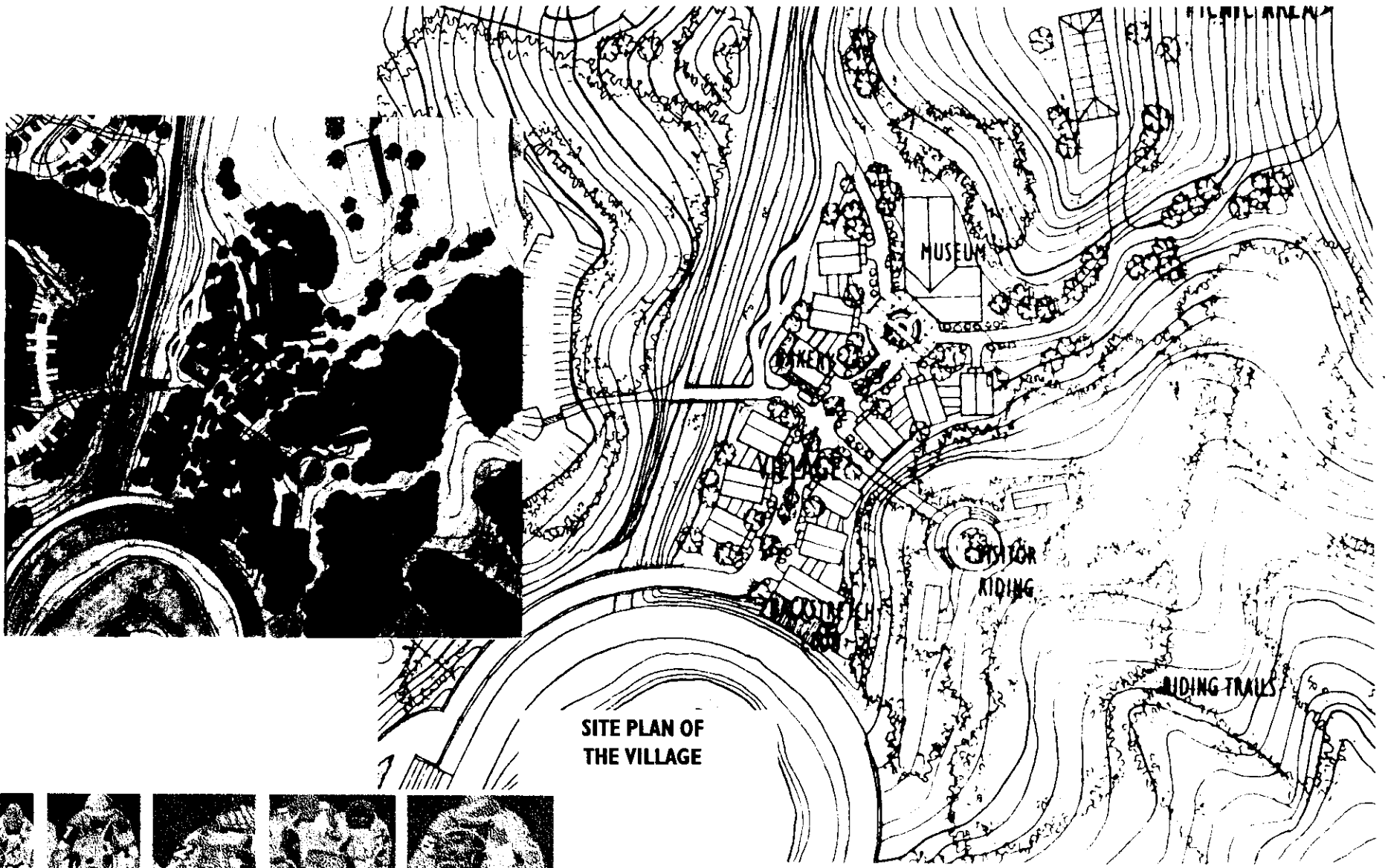
THE BACKSTRETCH IS DESIGNED CURRENTLY TO HOLD TWENTY STABLES WITH ROOM TO EXPAND FOR FUTURE GROWTH. THE FUTURE GROWTH WOULD RADIATE OUT FROM THE TRAINING TRACK ON TERRACES IN THE SAME MANNER THAT THE CURRENT STABLES DO ONLY ON THE EAST SIDE OF IT. EACH STABLE CAN HOUSE FORTY THOROUGHBREDS. THE INDIVIDUAL HORSE STALLS ARE DESIGNED AS 10' X 12' BAYS GIVING THE THOROUGHBREDS PLENTY OF ROOM TO FEEL COMFORTABLE IN AND ROOM FOR THE GROOMERS AND STABLEHANDS TO WORK.

THE LINEAR CORRIDOR CONNECTS THE STALLS TO A CENTRAL LOUNGE AREA FOR EMPLOYEES AND TEAM MEMBERS TO CONGREGATE AND POST RACE RESULTS AND A WASH DOWN AREA FOR THE THOROUGHBREDS. AT EACH END OF THE STABLES ARE TWO STORAGE AREAS FOR THE HAY, FEED, AND MANURE. EACH STALL HAS ACCESS TO THE CENTRAL CORRIDOR AND TO THE OUTSIDE. THE OUTSIDE ACCESS IS THROUGH A SLIDING DOOR. THE TOP HALF OF THIS SLIDING DOOR CAN BE OPENED TO PULL THROUGH A CROSS VENTILATION IN ORDER TO KEEP THE THOROUGHBREDS COOL. THE INTERIOR OF THE STABLE WOULD BE OPEN, WITH EXPOSED STEEL TRUSSES, TO ALLOW A GRAND AMBIANCE SIMILAR TO THE OLD CHAPEL-LIKE STABLES AND TO ALLOW THE HEAT TO RISE IN THE SUMMER. THE MATERIALS OF THE STABLE WOULD BE ALUMINUM SIDING WITH STANDING SEAM METAL ROOFS FOR COST EFFICIENCY AND FIRE SAFETY. THE ROOF OVER THE CENTRAL SPACE OF EACH STABLE WOULD BE COPPER ROOFING. THE COLORS CHOSEN WOULD BE WARM BROWNS MIMICKING THE NATURAL MATERIALS OF THE PRESTIGIOUS BREEDING KINGDOMS.

THE STABLES ARE WATCHED FROM A SECURITY TOWER AS WELL AS FROM TWENTY FOUR HOUR SUPERVISION. THE SAFETY OF THE THOROUGHBREDS FROM FIRE AND VANDALISM IS VERY IMPORTANT.



SECTION MODEL OF A TYPICAL STABLE



SITE PLAN OF THE VILLAGE



DESIGN SOLUTION

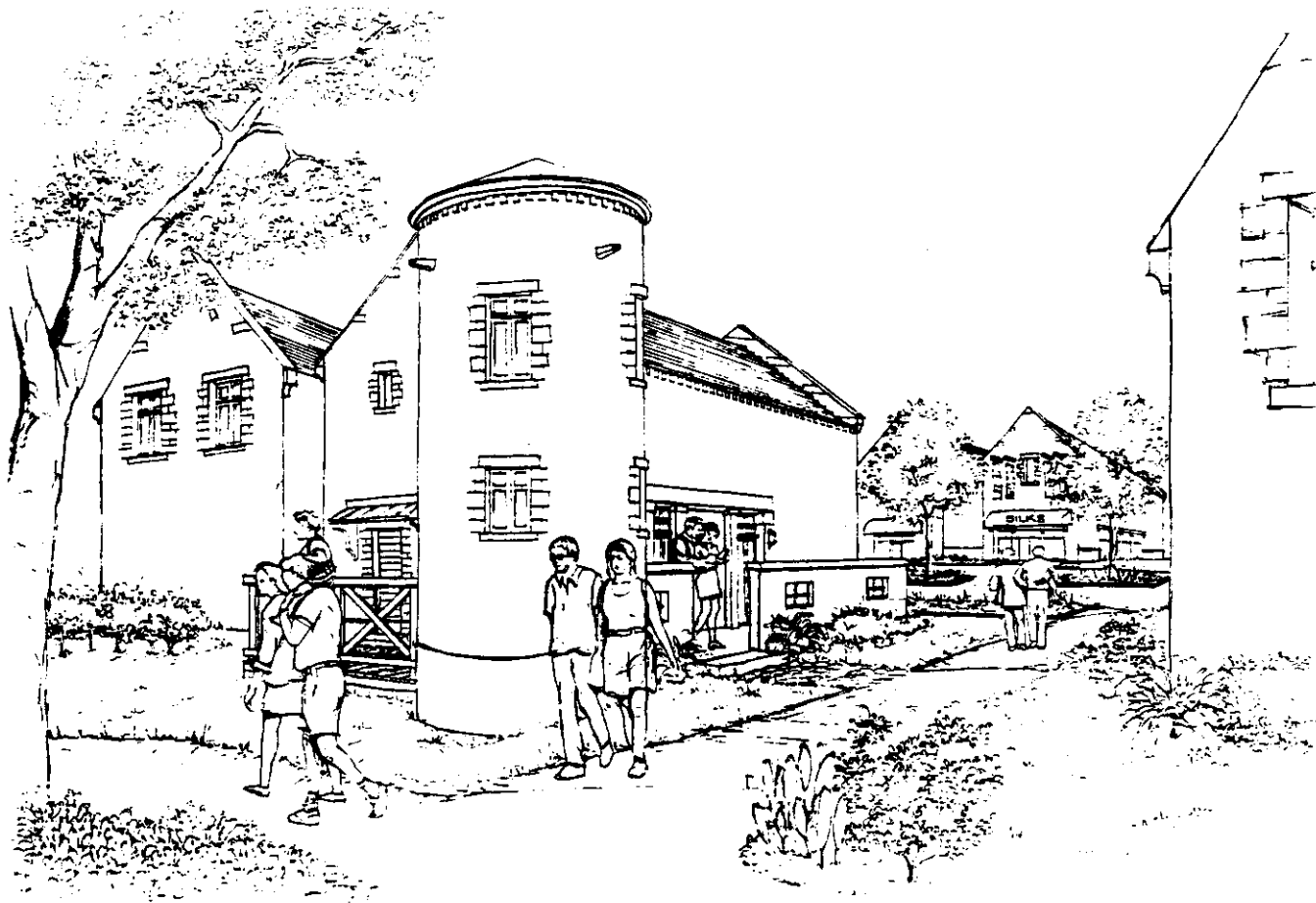
THE VILLAGE

THE SECOND AREA THAT I CHOSE TO FOCUS ON IS THE VILLAGE AREA. THIS SPACE IS THE TRANSITION FROM THE PUBLIC RACEWAY ACTIVITIES TO THE USUALLY PUBLIC RESTRICTED BACKSTRETCH. SINCE THE ATLANTA METROPOLITAN RACEWAY PARK IS AN ATTEMPT TO EDUCATE PEOPLE INTO THE THOROUGHBREDS' BACKGROUND, WHAT THE SPORT IS REALLY ABOUT, AND THE WORK THAT GOES INTO TRAINING THE HORSE, THE VILLAGE SERVES AS AN ACTIVITY CENTER THAT DOES ALL OF THESE. THE VILLAGE CONTAINS A MUSEUM THAT HAS MEMORABILIA ABOUT FAMOUS THOROUGHBREDS AND IMPORTANT RACES, AN INFORMATIVE 360 DEGREE THEATRE, AND A WALKTHROUGH OF A LIFE OF A THOROUGHBRED RACEHORSE FROM BIRTH TO DEATH. THE VILLAGE CONTAINS SHOPS THAT ARE RAN BY RACEWAY EMPLOYEES WHERE THEY CAN SELL SADDLERY, SHOW HOW TO TAN LEATHER, SPIN AND SELL SILKS LIKE THE ONES THE JOCKEYS WEAR, OR SELL TEAM BANNERS. A SMALL BOOK STORE IS CONTAINED IN THE VILLAGE. THIS BOOK STORE WOULD BE

FILLED WITH MAGAZINES, BOOKS, POSTERS, AND CARDS THAT TELL ABOUT THE THOROUGHBREDS AND THE SPORT. NEWSPAPERS COULD ALSO BE PURCHASED HERE FOR THE PATRONS WHO COME IN THE EARLY MORNING TO WATCH WORKOUTS AND DECIDE TO READ WHILE THEY WATCH. A BAKERY IS LOCATED AT THE WEST ENTRY TO THE VILLAGE FROM THE PARKING LOT WHICH FILLS THE VILLAGE WITH A PLEASANT AROMA AND PROVIDES PATRONS WITH COFFEE AND DONUTS OR CHILDREN WITH A COOKIE. THE BACKSTRETCH CLUB IS LOCATED IN THE VILLAGE ADJACENT TO THE TRAINING TRACK. THIS PROVIDES A PLACE WHERE THE PATRON, EMPLOYEE, AND TEAM MEMBER CAN SIT OUTDOORS OR INDOORS AND SOCIALIZE WITH ONE ANOTHER, EAT, OR WATCH THE MORNING WORKOUTS. FINALLY, THE VILLAGE CONTAINS A VISITOR RIDING FACILITY WHERE CHILDREN CAN RIDE PONIES AROUND A RING OR MORE EXPERIENCED RIDERS CAN RIDE HORSES ALONG WOODED TRAILS.



**SITE SECTION OF
THE VILLAGE**



**WEST ENTRY INTO
THE VILLAGE**



ATLANTA METROPOLITAN RACEWAY PARK

DESIGN SOLUTION

THE VILLAGE

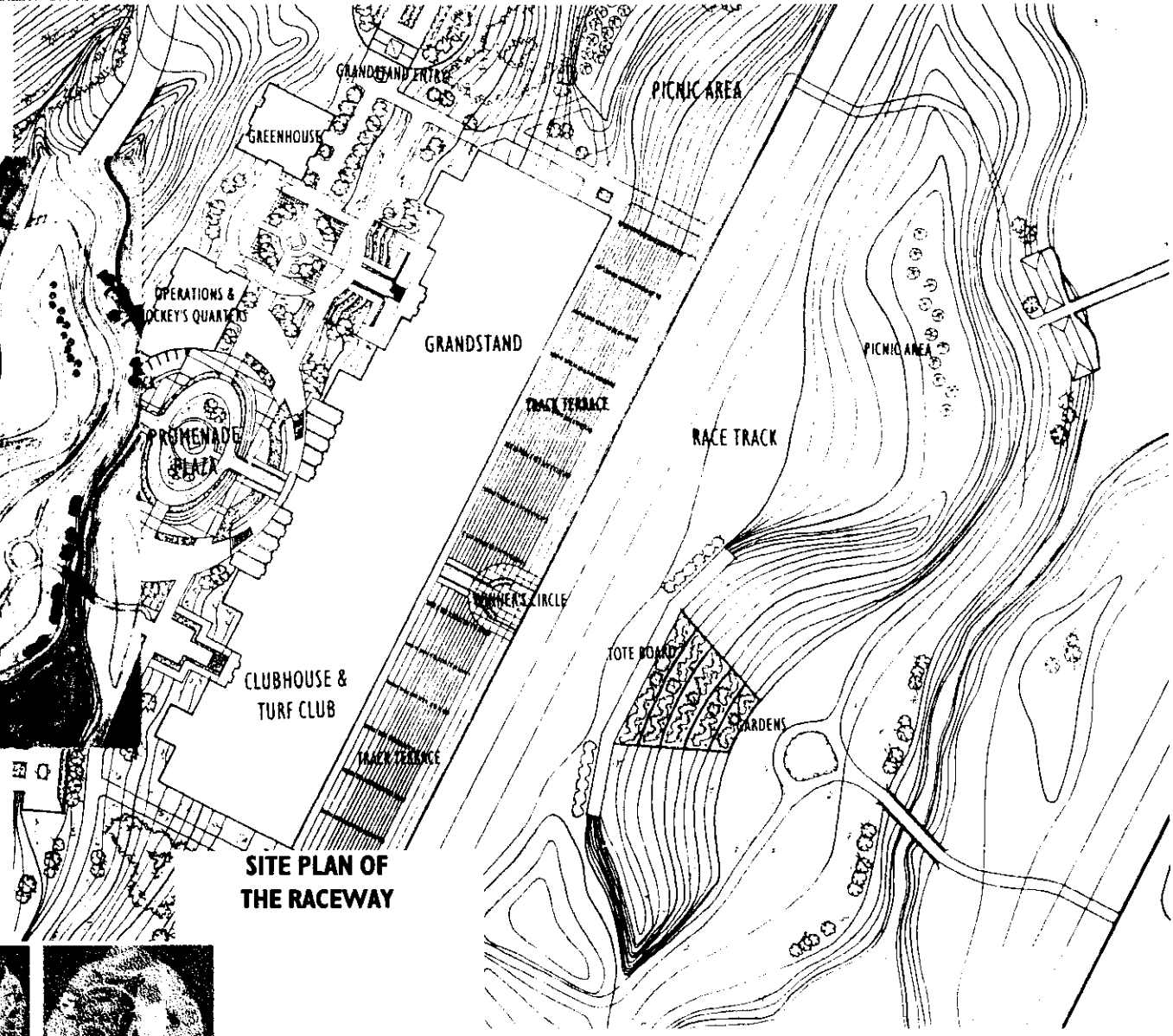


**INITIAL SKETCHES OF
THE VILLAGE**

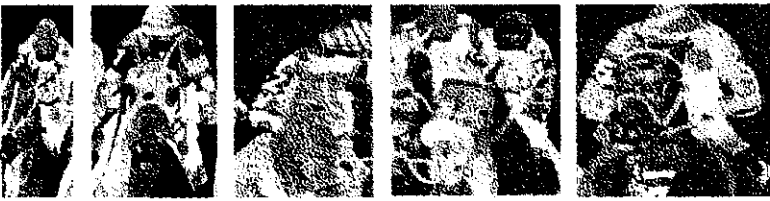
SINCE THE VILLAGE IS A TRANSITION FROM THE FAST PACED RACE WORLD TO THE HARD WORKING THOROUGHBREDS, THE CHARACTER OF THE VILLAGE IS IMPORTANT. THE ARCHITECTURE OF THE RACING WORLD IS MODERN AND SLEEK WHILE THE ARCHITECTURE OF THE STABLES IS STATELY AND SACRED. THE VILLAGE SHOULD BRING THE PATRON OUT OF THE TECHNOLOGICAL WORLD OF THE VIDEO SCREENS AND PARIMUTUAL WINDOW AND INTO THE KINGDOM OF THE THOROUGHBRED. THE SCALE OF THE VILLAGE SHOULD BE MORE ON A HUMAN SCALE MAKING THE PATRON FEEL IMPORTANT AND A PART OF WHAT IS GOING ON. THIS IS ACHIEVED BY PLANTING SMALLER TREES, BRINGING THEM CLOSER TOGETHER, AND UTILIZING FLOWERED GARDENS. THE CANOPIES AND BANNERS THAT HANG ABOVE THE DOORS TO EACH SHOP PROVIDE THE FESTIVITY THAT WAS THOUGHT TO BE LEFT BEHIND AT THE RACEWAY. THE ARCHITECTURE OF THE VILLAGE SHOPS RESEMBLES OLD EUROPEAN VILLAGES WITH COBBLESTONE WALKS, STONE FACADES, AND SLATE ROOFS.

THE VILLAGE RUNS ALONG SIDE OF THE HORSE VALLEY THAT TAKES THE THOROUGHBREDS FROM THE TRAINING TRACK TO THE RACE TRACK. ALTHOUGH THE CIRCULATION THROUGH THE TRACK IS NOT VISUALLY OPEN TO THE HORSE TRACK, THE OPPORTUNITY TO WATCH THIS PROCESSION IS MADE AVAILABLE BY INCORPORATING AN OBSERVATION DECK ON THE BACKSIDE OF THE WEST SHOPS. THIS DECK IS APPROXIMATELY 10 FEET ABOVE THE HORSE VALLEY PROVIDING SECURITY FOR THE THOROUGHBREDS.

THE VILLAGE LIES ALONG THE PATH FROM THE PARKING LOT TO THE TRAINING TRACK OR FROM THE RACEWAY FACILITIES TO THE TRAINING TRACK. THIS DIRECT RELATIONSHIP FORCIBLY BRINGS MANY PATRONS PAST THE WINDOWS OF THE SHOPS AND ENCOURAGES THEM TO EITHER WINDOW SHOP OR COME IN AND DISCOVER WHAT'S INSIDE.



SITE PLAN OF THE RACEWAY



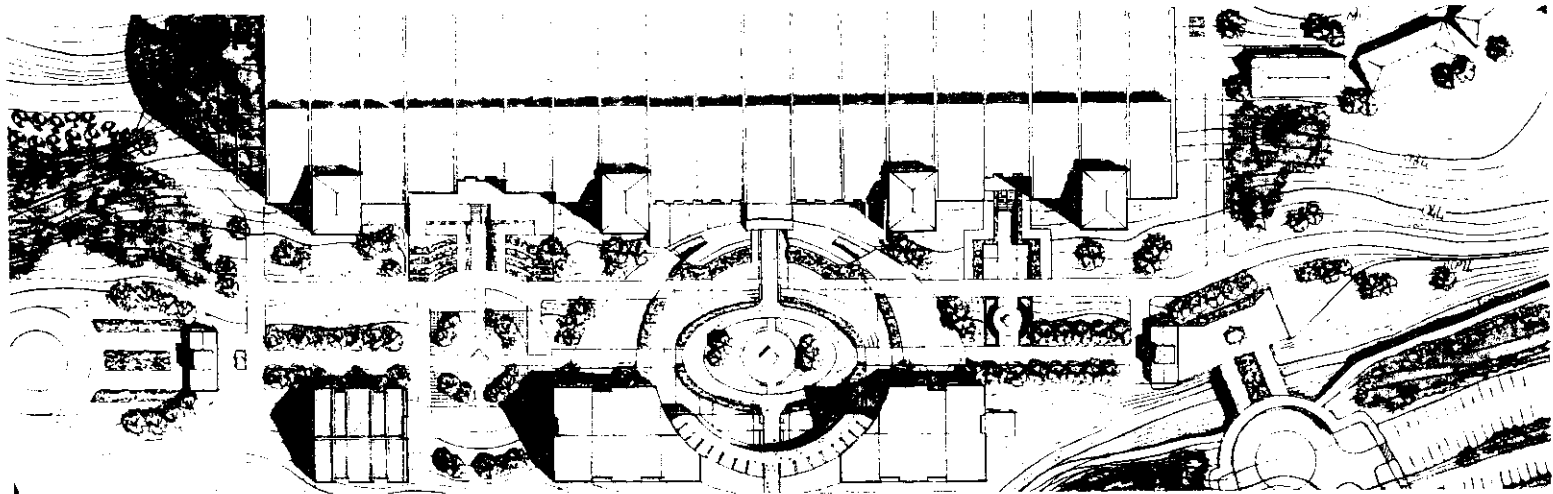
ATLANTA METROPOLITAN RACEWAY PARK

DESIGN SOLUTION

THE RACEWAY

THE THIRD AND FINAL AREA I CHOSE TO FOCUS ON WAS THE RACEWAY FACILITIES. THE RACEWAY INCLUDES THE DIRT RACE COURSE, THE TURF RACE COURSE, THE CLUBHOUSE/GRANDSTAND, THE ADMINISTRATION BUILDING, THE OPERATIONS AND JOCKEYS QUARTERS, THE PADDOCK, THE PROMENADE PLAZA, THE WINNER'S CIRCLE, THE GREENHOUSE, PICNIC AREAS, AND THE ENTRY PLAZAS. THE CLUBHOUSE/GRANDSTAND IS LOCATED ON THE RIDGE OF THE HILL THAT SLOPES DOWN TOWARD THE TRACK ON ONE SIDE AND DOWN TOWARDS THE PADDOCK ON THE OTHER. THESE TWO SIDES ALLOW THE PATRON TO VIEW BOTH THE PRE-RACE ACTIVITIES AND THE LIVE RACES. THE SLOPING GROUND UNDERNEATH THE CLUBHOUSE/GRANDSTAND VISUALLY CONNECTS THE BUILDING TO THE LAND AND CREATES PICNIC PLAZAS FOR PATRONS TO ENJOY THE RACE FROM A BLANKET. THE LAND BEGINS TO SLOPE MORE STEEPLY TO THE WEST OF THE RACEWAY. THIS STEEP SLOPE WOULD PROVIDE PROTECTION FROM TRESPASSERS AS WELL AS MAKING THE FACILITIES APPEAR MORE

MONUMENTAL FROM THE ENTRY ROAD BELOW. THE ENTRY INTO THE RACEWAY IS FROM TWO ADMISSION PAVILIONS: THE CLUBHOUSE ENTRY AND THE GRANDSTAND ENTRY. AFTER ENTERING EITHER OF THESE PAVILIONS, THE PATRON IS LED ON A LINEAR, TREE LINED PATH THAT TERMINATES INTO THE PROMENADE PLAZA. THIS PLAZA BECOMES THE FOCAL POINT FOR THE DISPLAY OF THE THOROUGHBREDS AND THUS, CONTAINS STEPPED VIEWING TERRACES AND BALCONIES AROUND IT. THERE ARE ALSO TWO PLAZAS IN FRONT OF THE CLUBHOUSE AND GRANDSTAND ENTRY. THESE PLAZAS ARE DESIGNED WITH WATER FOUNTAINS, BENCHES, AND HANDICAPPED ACCESSIBLE RAMPS. IN ADDITION, THE GRANDSTAND PLAZA CONTAINS A "CIRCLE OF WINNERS" PLAZA WHERE A PATRON CAN BUY A PAVER AND HAVE THEIR NAME ENGRAVED. THIS PLAZA IS ALSO CONNECTED TO THE GREENHOUSE WHERE PATRONS CAN LEARN ABOUT THE MANICURING OF THE PLANTS AND FLOWERS LOCATED ON THE PLAZAS AND GARDENS.



**GARDENS AND PLAZAS OF
THE RACEWAY**

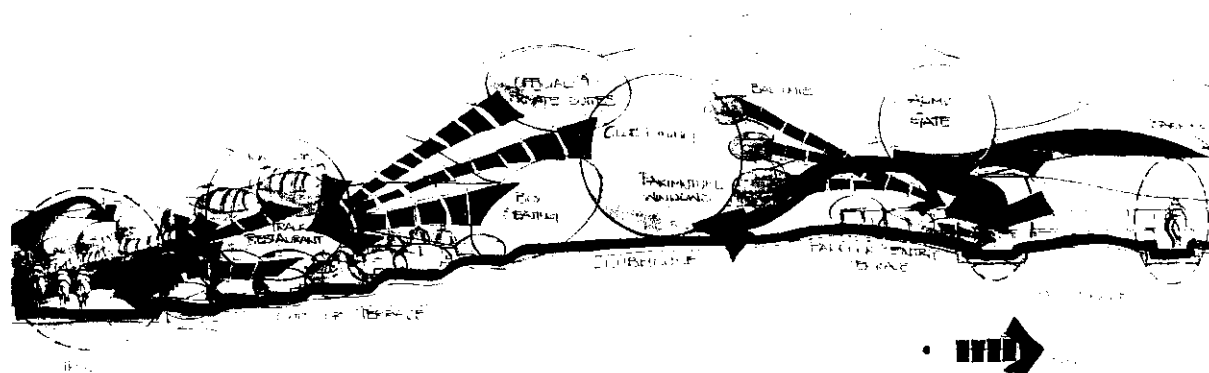
DESIGN SOLUTION

THE CLUBHOUSE

THE DESIGN OF THE CLUBHOUSE BEGAN WITH THE CONCEPTUAL SECTION IN BUBBLE DIAGRAM FORM. THE SIGHTLINES WERE EXPLORED AND THE NECESSITY FOR THE TWO SIDES OF THE CLUBHOUSE TO OPEN ONTO THE PADDOCK AND THE TRACK WERE CLEAR. THIS DIAGRAM LED TO THE SKETCHES THAT ARE LOCATED ON THE RIGHT, BUT THE ARCHITECTURAL VOCABULARY OF THE BUILDING STILL NEED TO BE DEFINED. I DIDN'T WANT TO SIMPLY ADOPT A STYLE, LIKE GEORGIAN, AND INCORPORATE IT INTO MY DESIGN, BUT RATHER I WANTED TO TAKE THE IMAGES THAT PORTRAY THE ESSENCE OF THE RACING WORLD AND DERIVE MY DESIGN FROM THAT. I STARTED TO EXPLORE THE DRAPING OF THE RACING EQUIPMENT THROUGH THE DRAPING OF CANOPIES OVER ENTRIES AND BALCONIES. THEN I EXPLORED THE STARTING GATE AS AN IDEA FOR THE FACADE, USING A STEEL SKELETON STRUCTURE. THIS NOTION OF THE STARTING GATE WAS NOT COMING THROUGH IN THE DESIGN THOUGH, SO I REEXAMINED THE STARTING GATE. THE STRUCTURE IS A WHITE STEEL WITH THE DOORS, OR GATES, USUALLY PAINTED A COLOR. BUT WHAT I FOUND TO REALLY PERSONIFY THE STARTING GATE WAS THE INTRICATE

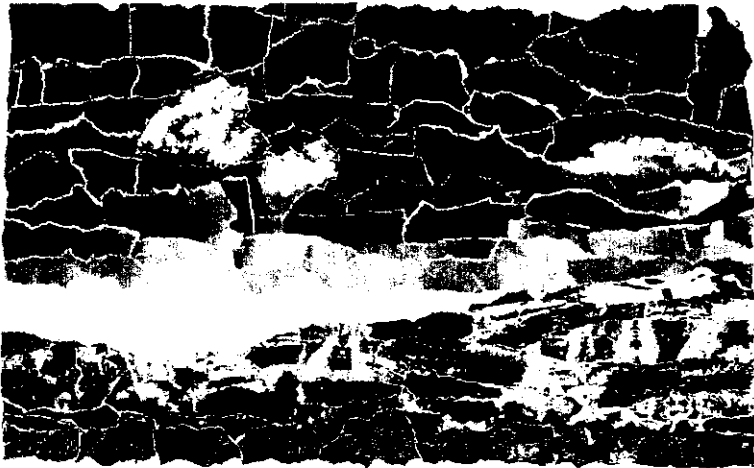
CROSSBRACING THAT WAS ALMOST DECORATIVE AND THE COLORS THAT WERE TRAPPED BEHIND THEIR GATES, THE JOCKEYS' SILKS AND THE THOROUGHBREDS' GEAR.

THE FOLLOWING PAGES CONTAIN AN EXPLORATION ON COLOR AND HOW THAT COLOR EFFECTS THE LAND. THROUGH THE USE OF A COLLAGE MADE OUT OF PICTURES OF SKIES, TREES, AND GRASS I BEGAN TO EXPLORE DIFFERENT COLORS. THE FIRST IS GREEN TONES AND THIS DEMONSTRATES HOW A BUILDING CAN BLEND INTO ITS ENVIRONMENT. THE SECOND IS BROWN TONES AND THIS DEMONSTRATES HOW A BUILDING CAN BE NEUTRAL UTILIZING NATURAL MATERIALS SUCH AS WOOD AND STONE. THE THIRD IS POLYCHROMATIC AND THIS DEMONSTRATES HOW A BUILDING CAN BE BOISTEROUS AND DANCE ALONG THE LANDSCAPE LIKE THE SILKS OF THE JOCKEYS. THE OTHER TWO PICTURES WERE AN ATTEMPT TO UTILIZE COLOR EITHER IN THE FOREGROUND OF A NEUTRAL BUILDING OR NEUTRAL COLOR IN FRONT OF A COLORFUL BUILDING, OR MURAL.



**SCHEMATIC SECTION OF
THE CLUBHOUSE**





COLOR STUDIES



ATLANTA METROPOLITAN RACEWAY PARK