
**Mount Vernon
Elementary School**

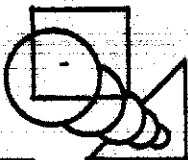
Hancock County, Indiana

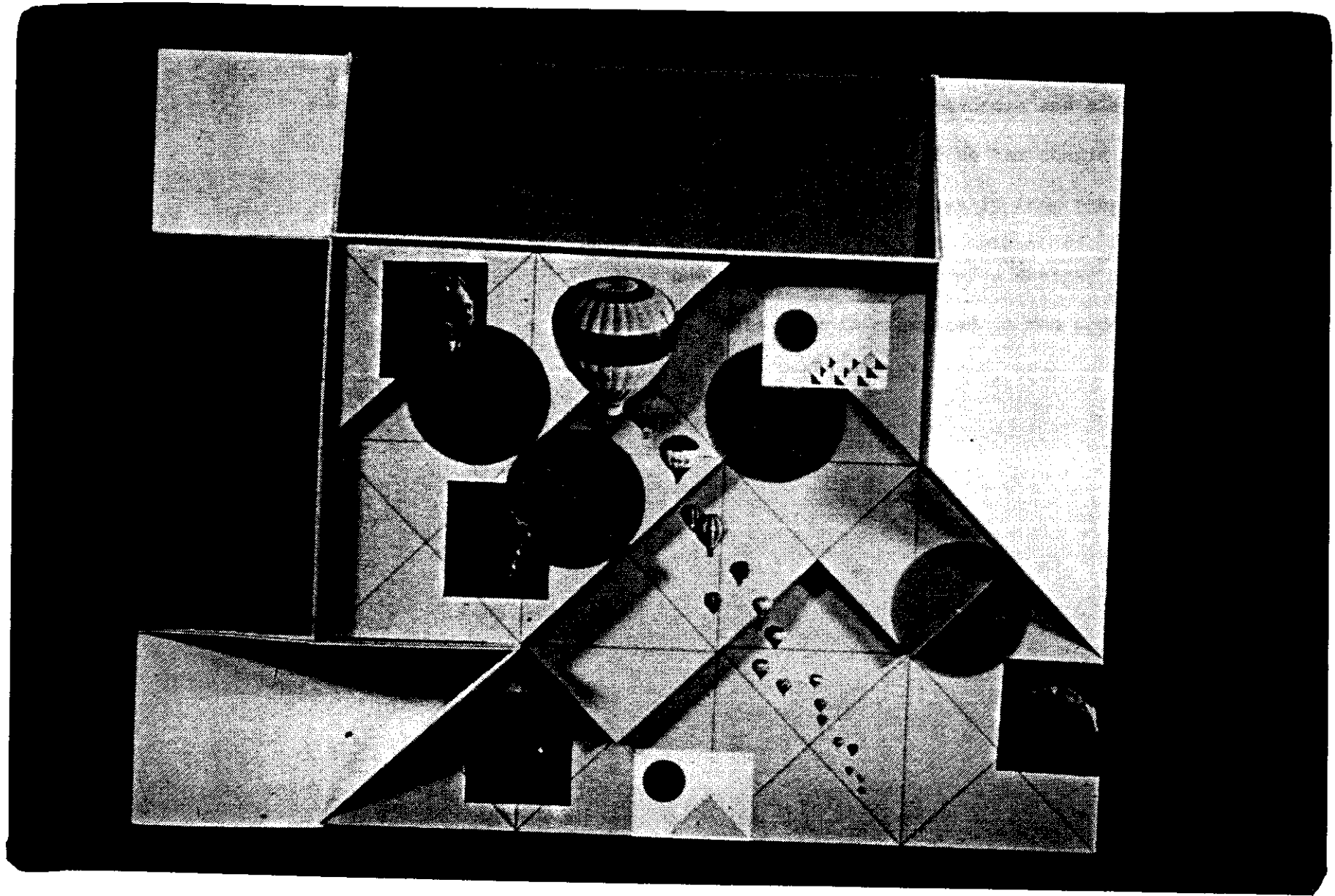
Mark R. Bay

September 1979 – May 1980

A.E. Palmer – Thesis Professor

MOUNT VERNON ELEMENTARY SCHOOL





ABSTRACT

The thesis is the final design project required at the Ball State University, College of Architecture and Planning. A total of three ten-week periods are devoted to the thesis project. Each student chooses a project and develops it from program to a final design.

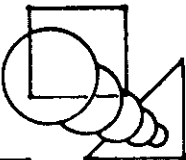
This book serves as a record of a design, Mount Vernon Elementary School. This book is organized in the order by which the project evolved, from problem definition, through design development, to a design solution.

TABLE OF CONTENTS

- I. Introduction
 - II. Problem Definition
 - 1. Program
 - 2. Site Analysis
 - 3. Building Type Study
 - III. Design Development
 - 1. Conceptual Study
 - 2. Schematic Design
 - 3. Preliminary Design
 - IV. Design Solution
 - V. Bibliography
-

Introduction

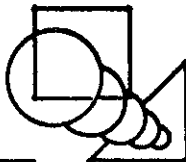
MOUNT VERNON ELEMENTARY SCHOOL

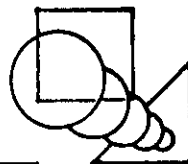


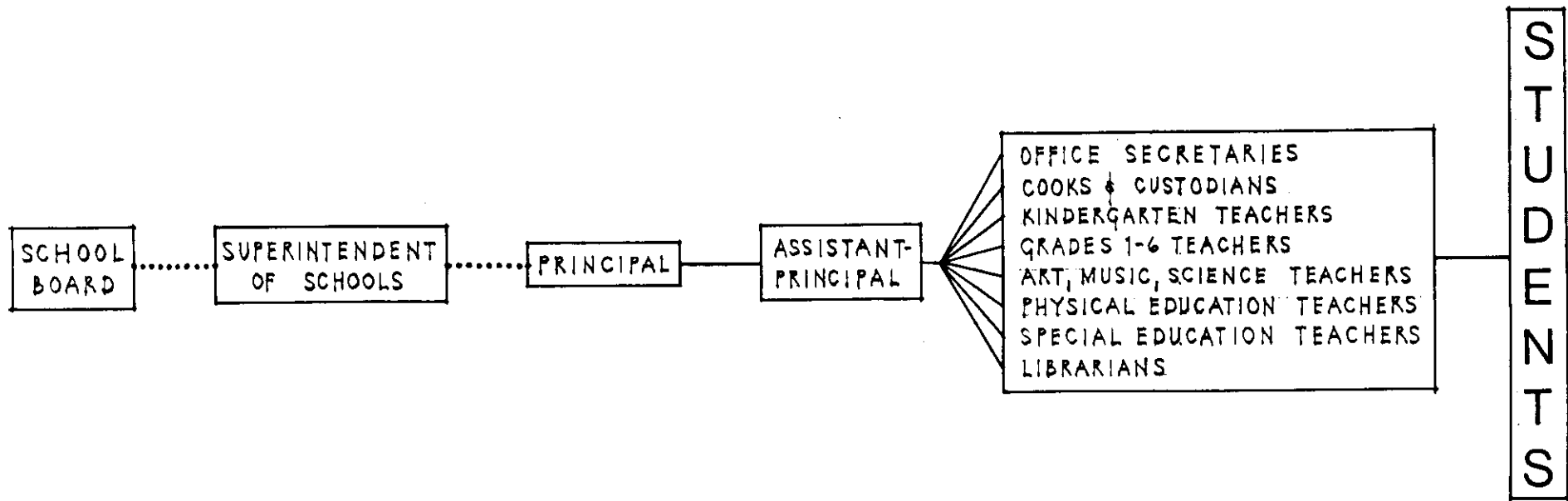
This thesis project consists of an elementary school located in Hancock County, Indiana. The site contains the existing High School, Middle School and Administration Building of the Mount Vernon Community School Corporation.

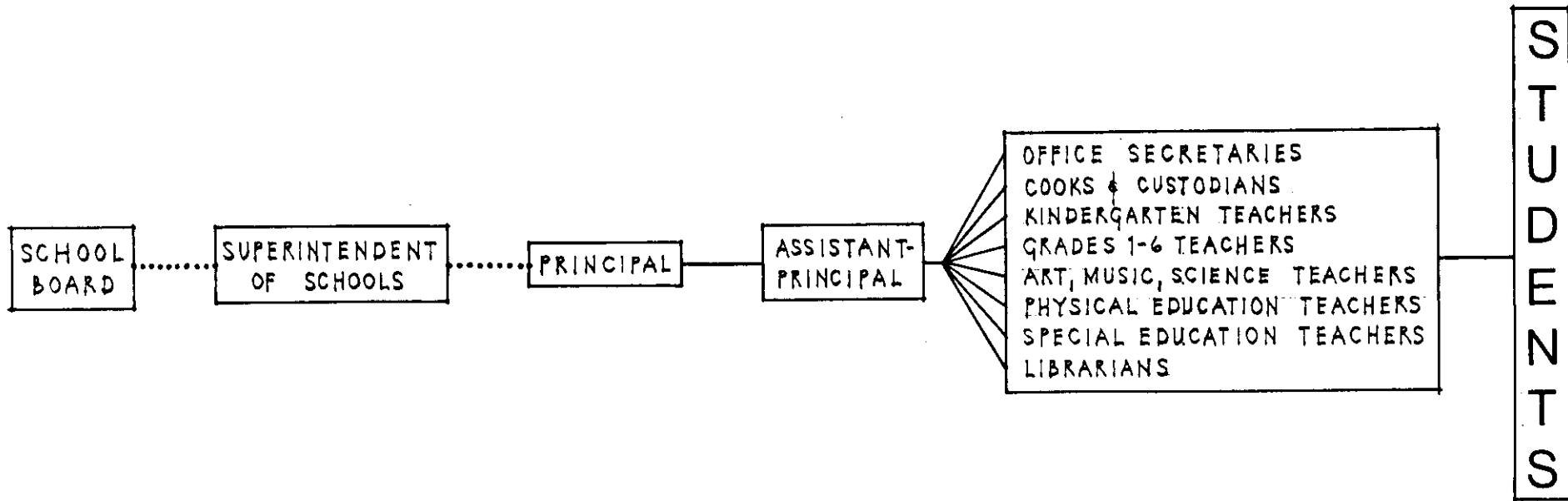
This elementary school is designed to accommodate an estimated 720 students, consisting of grades kindergarten through sixth and special education. The school will accommodate two sections of kindergarten and four sections for each grades one through six.

A pre-design goal and objective for the building was the creation of an energy efficient facility. Pre-design goals and objectives for the users of the facility include the experiencing of an exciting yet relaxing environment for learning. Also, a desire to aid the student in learning through his or her own experimentation along with the creation of a flexible environment that aids the teacher in their instruction of the students.









SPACE	USER	ACTIVITIES	SPACE PERFORMANCE	SPACE STANDARD	FURNITURE EQUIPMENT	ENVIRON. REQ'MNTS
Class Area (Kindergarten)	Students & Teachers	Instruction, Lecture, Reading, Writing, Games, Story Telling, Socializing, Experimentation, Playing, Presentations, Studying, Test Taking (Verbal and Written), Movies.	Flexible, Adaptable, Warm, Homey, Controllable, Group and Individual Functions, Physical-Visual-Emotional Stimuli, Uninhibitive, Natural Lighting, Acoustical Control.	1200 S.F. + 300 Storage & Toilet. Indiana Minimum Standards	Desks, Tables, Chairs, Storage Cabinets, Bookshelves, Coat Racks, Lockers, Plants, Sink.	
Class Area (1-6)	Students & Teachers	Instruction, Lecture, Reading, Writing, Games, Story Telling, Socializing, Experimentation, Presentations, Studying, Test Taking (Verbal and Written), Movies.	Flexible, Adaptable, Warm, Homey, Controllable, Group and Individual Functions, Physical-Visual-Emotional Stimuli, Uninhibitive, Natural Lighting, Acoustical Control.	925 S.F. 30 S.F. Per Pupil Indiana Minimum Standards	Desks, Tables, Chairs, Storage Cabinets, Bookshelves, Coat Racks, Lockers, Plants.	
Physical Education (Gym)	Students, Teachers, Visitor	Basketball, Exercise, Volleyball, Dance, Games, Dodgeball, Kickball, Large Group Meeting, Performing.	Adaptable, Accessible, View In Of Activities, Natural Lighting.	12000 S.F. Seating For 1000 Castaldi p.226	Bleachers, Basketball Goals	

SPACE	USER	ACTIVITIES	SPACE PERFORMANCE	SPACE STANDARD	FURNITURE EQUIPMENT	ENVIRON. REQ'MNTS
Physical Education (Showers & Lockers)	Students	Changing Clothes, Showering	Maintainable, Proper Ventilation	1500 S.F.	Lockers, Benches, Showers, Lavatory Toilet.	
Physical Education (Office & Storage)	Teachers	Grading, Planning, Student Conference	Observation Of Locker Room	200 Office 600 Storage Castaldi p.226	Desk, Chair, Cabinets, Shelves	
Gym-Auditorium (Stage Area)	Students, Teachers, Visitors	Plays, Community Functions, Music Presentations, Convocations		1500 S.F. Castaldi p.226	Risers	
Art Class Area	Students & Teachers	Drawing, Painting, Coloring, Lecture, Instruction, Movies, Slides.	Active, Creative Incentive, Visual Stimuli, Natural Lighting.	925 S.F. Indiana Minimum Standards	Tables, Chairs, Storage Cabinets, Sink and Work Stations, Desk, Kiln, Bookshelves	
Music Class Area	Students & Teachers	Instruction, Singing	Acoustical (Keep Sound In & Out)	1200 S.F. Indiana Minimum Standards	Chairs, Risers, Piano, Bookshelves, Storage Cabinets.	

SPACE	USER	ACTIVITIES	SPACE PERFORMANCE	SPACE STANDARD	FURNITURE EQUIPMENT	ENVIRON. REQ'MNTS
Music Band Area	Students & Teachers	Instruction, Playing Of Instruments, Large Group Learning	Acoustical	1200 S.F. Indiana Minimum Standards	Chairs, Risers, Piano, Bookshelves, Storage Cabinets.	
Science Class Area	Students & Teachers	Instruction, Demonstration, Experimentation, Movies,	Active, Natural Lighting	925 S.F. Indiana Minimum Standards	Lab Stations, Desks, Chairs, Tables, Cabinets, Shelves, Sink.	
Learning Materials Center (Reading and Resource Area)	Students, Teachers, Visitors	Reading, Writing, Studying	Group & Individual Areas, Natural Lighting, Plants, Relaxing.	1500 S.F. Seating For 72	Bookshelves, Tables, Chairs Study Carrols, Couches, Check Out Counter, Built In Furniture.	
Learning Materials Center (Office and Material Preparation)	Librarian	Cataloging Of Incoming Material.	Observational	400 S.F.	Bookshelves, Desk, Chair, File Cabinets, Table.	
Learning Materials Center (Audio-Visual, Storage and Preview)	Librarian, Teachers	Audio-Visual Storage, Preview Of New Material		800 S.F.	Cabinets, Shelves Desk, Chairs	

SPACE	USER	ACTIVITIES	SPACE PERFORMANCE	SPACE STANDARD	FURNITURE EQUIPMENT	ENVIRON. REQ'MNTS
Learning Materials Center (Conference)	Teachers & Students	Small Group Verbal Discussions		250 S.F.	Table, Chairs	
Special Education Class Area	Special Education Students (K-6)	Instruction, Play, Experimentation	Physical and Visual Stimuli, Group and Individual Spaces, Graphics, Handicapped Considerations, Homey, Uninhibitive.	1050 S.F. Castaldi p.226	Tables, Chairs Cabinets, Shelves, Desks, Toys	
Special Reading	Students & Teacher	Instruction		600 S.F.	Table, Chairs, Shelves	
Speech and Hearing	Students & Teachers	Instruction		600 S.F.	Testing Equipment, Table, Chairs	
Cafeteria (Dining)	Students	Eating Meals, Multi-Purpose	Easy To Maintain, Clean-Up, Set Up, Natural Lighting	2400 S.F.	Tables & Chairs	
Cafeteria (Serving)	Students, Cooks	Serving Meals	Easy To Maintain	200 S.F. Castaldi p.226	Serving Units	

SPACE	USER	ACTIVITIES	SPACE PERFORMANCE	SPACE STANDARD	FURNITURE EQUIPMENT	ENVIRON. REQ'MNTS
Cafeteria (Kitchen)	Cooks	Preparation Of Meals, Dish-washing	Easy To Maintain	1200 S.F. Castaldi p.226	Sinks, Freezer, Fryer, Mixer, Food Preparation Counter, Oven, Milk Dispenser, Dishwasher, Shelves.	
Cafeteria (Food Storage)	Cooks	Storage Of Dry Foods (Non-perishables)		360 S.F. Castaldi p.226	Shelves	
Cafeteria (Office and Lockers)	Cooks	Planning Of Meals, Restroom		300 S.F.	Desk, Chairs, File Cabinets, Shelves, Lockers	
Building Services	Custodians	Custodian Office and Workshop, Storage		900 S.F. Castaldi p.226	Shelves, Desk, Chair, Workbench	
Administration (Waiting Room and General Office)	Secretaries, Students, Teachers, Visitors	Reception, Answer Telephone, Typing, Filing, Xerox, Distribution Of Mail and Other.	Accessible	450 S.F. Castaldi p.226	Reception Counter, Desk, Chairs, File Cabinets, Typewriter, Shelves, Xerox, Waiting Seating, Storage Cabinets.	

SPACE	USER	ACTIVITIES	SPACE PERFORMANCE	SPACE STANDARD	FURNITURE EQUIPMENT	ENVIRON. REQ'MNTS
Cafeteria (Kitchen)	Cooks	Preparation Of Meals, Dish-washing	Easy To Maintain	1200 S.F. Castaldi p.226	Sinks, Freezer, Fryer, Mixer, Food Preparation Counter, Oven, Milk Dispenser, Dishwasher, Shelves.	
Cafeteria (Food Storage)	Cooks	Storage Of Dry Foods (Non-perishables)		360 S.F. Castaldi p.226	Shelves	
Cafeteria (Office and Lockers)	Cooks	Planning Of Meals, Restroom		300 S.F.	Desk, Chairs, File Cabinets, Shelves, Lockers	
Building Services	Custodians	Custodian Office and Workshop, Storage		900 S.F. Castaldi p.226	Shelves, Desk, Chair, Workbench	
Administration (Waiting Room and General Office)	Secretaries, Students, Teachers, Visitors	Reception, Answer Telephone, Typing, Filing, Xerox, Distribution Of Mail and Other.	Accessible	450 S.F. Castaldi p.226	Reception Counter, Desk, Chairs, File Cabinets, Typewriter, Shelves, Xerox, Waiting Seating, Storage Cabinets.	

SPACE	USER	ACTIVITIES	SPACE PERFORMANCE	SPACE STANDARD	FURNITURE EQUIPMENT	ENVIRON. REQ'MNTS
Administration (Principal's Office)	Principal, Students, Teachers, Secretary, Visitor	Planning, Discussions, Conferences, Interviews		225 S.F. Castaldi p.226	Desk, Chairs, File Cabinets, Storage Cabinets, Shelves	
Administration (Assistant-Principal's Office)	Assistant-Principal, Students, Teachers, Secretary, Visitor	Scheduling, Conferences, Discussions, Interviews		225 S.F. Castaldi p.226	Desk, Chairs, File Cabinets, Storage Cabinets, Shelves	
Administration (Health Suite)	Nurse, Students	Examinations, Resting, Observation		525 S.F. Castaldi p.226	Cabinets, 2 Cots Male and Female, Table, Chair, Lavatory, Toilet	
Administration (Conference Room)	Principal, Assistant-Principal, Teachers, Visitors	Meetings, Discussions		250 S.F.	Table, Chairs Shelves	
Teachers Workroom and Lounge	Teachers	Class Planning, Grading, Reading, Test Preparation	Relaxing, Natural Lighting	550 S.F. Castaldi p.226	Tables, Chairs Typewriter, Xerox, Couch	

SPACE	USER	ACTIVITIES	SPACE PERFORMANCE	SPACE STANDARD	FURNITURE EQUIPMENT	ENVIRON. REQ' MNTS
Bookstore	Adminis- trator	Selling Of Materials		100 S.F.	Counter, Display Case, Shelves, Desk, Chair,	
Outdoor Area	Students	Playing, Sports	Controllable, Safety, Possible Indoor To Out- door Link		Playground Equipment, Swings, Slides, Sculptures	
Community Area	Public	Community Func- tions, Meetings, Classes, Presen- tations, Gather- ings				

Spaces	Number Of Spaces	S.F. Per Space	Total S.F.	Major Area Total
<u>Administration</u>				
General Office & Waiting Area	1	450	450	
Principal Office	1	225	225	
Assistant Principal Office	1	225	225	
Health Suite	1	525	525	
Conference	1	250	250	
Teacher Workroom & Lounge	1	550	550	
Bookstore	1	100	100	
Storage & Record Vault	1	300	300	2625
<u>Class Areas</u>				
Kindergarten	2	1500	3000	3000
First Grade	4	925	3700	
Second Grade	4	925	3700	
Third Grade	4	925	3700	
Fourth Grade	4	925	3700	
Fifth Grade	4	925	3700	
Sixth Grade	4	925	3700	22200
<u>Physical Education</u>				
Gymnasium	1	12000	12000	
Showers & Lockers	2	1500	3000	
Office	2	200	400	
Storage - Equipment	1	600	600	
Storage - General	1	600	600	
Stage (Auditorium)	1	1500	1500	
<u>Art</u>				
Class Area	1	925	925	
Storage	1	200	200	
<u>Music</u>				
Class Area	1	1200	1200	
Band Area	1	1200	1200	
Storage	1	200	200	

Spaces	Number Of Spaces	S.F. Per Space	Total S.F.	Major Area Total
<u>Administration</u>				
General Office & Waiting Area	1	450	450	
Principal Office	1	225	225	
Assistant Principal Office	1	225	225	
Health Suite	1	525	525	
Conference	1	250	250	
Teacher Workroom & Lounge	1	550	550	
Bookstore	1	100	100	
Storage & Record Vault	1	300	300	2625
<u>Class Areas</u>				
Kindergarten	2	1500	3000	3000
First Grade	4	925	3700	
Second Grade	4	925	3700	
Third Grade	4	925	3700	
Fourth Grade	4	925	3700	
Fifth Grade	4	925	3700	
Sixth Grade	4	925	3700	22200
<u>Physical Education</u>				
Gymnasium	1	12000	12000	
Showers & Lockers	2	1500	3000	
Office	2	200	400	
Storage - Equipment	1	600	600	
Storage - General	1	600	600	
Stage (Auditorium)	1	1500	1500	18100
<u>Art</u>				
Class Area	1	925	925	
Storage	1	200	200	1125
<u>Music</u>				
Class Area	1	1200	1200	
Band Area	1	1200	1200	
Storage	1	200	200	2600

Spaces	Number Of Spaces	S.F. Per Space	Total S.F.	Major Area Total
<u>Science</u>				
Class Area	1	925	925	
Storage	1	200	200	1125
<u>Learning Material Center</u>				
Reading & Resource Area	1	1500	1500	
Office & Material Preparation	1	400	400	
Audio-Visual	1	400	400	
Storage & Preview	1	400	400	
Conference	1	250	250	2950
<u>Special Education</u>				
Special Education Class Area	1	1050	1050	
Special Reading	1	600	600	
Speech & Hearing	1	600	600	
Storage	1	200	200	2450
<u>Cafeteria</u>				
Dining	1	2400	2400	
Table & Chair Storage	1	200	200	
Serving	1	200	200	
Kitchen	1	1200	1200	
Food Storage	1	360	360	
Office & Lockers	1	300	300	4660
<u>Building Services</u>				
Custodian Office & Workshop	1	500	500	
Storage	1	400	400	900

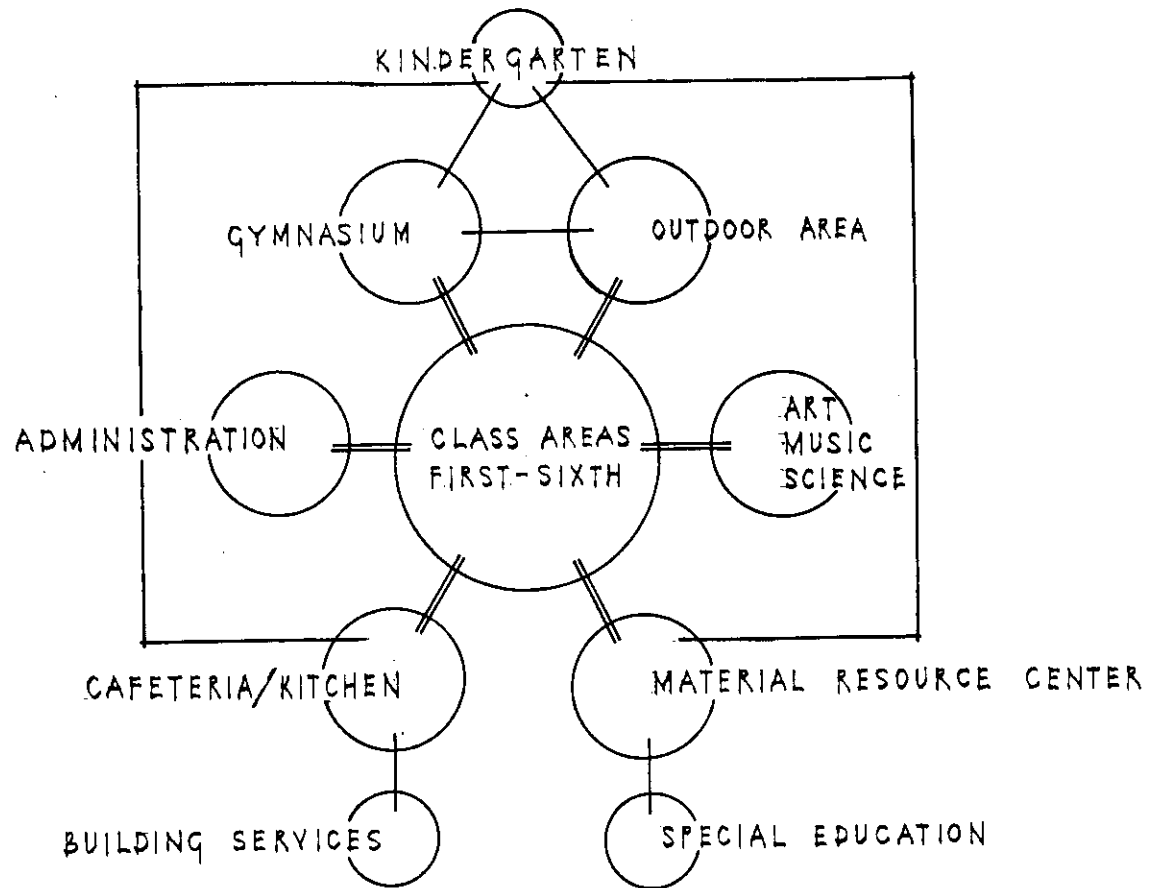
TOTAL NET 61,735 S.F.

Academic Bldg. Assignable / Unassignable
65% / 35%

GROSS S.F. 94,977 S.F.

GROSS S.F.

	94,977 S.F.
Circulation (20%)	18,995.4 S.F.
Mechanical (5.5%)	5,223.7 S.F.
Public Toilets (1.5%)	1,424.7 S.F.
Janitor Closets (.5%)	474.9 S.F.
Unassigned Storage (.5%)	474.9 S.F.
Walls, Partitions, Structure (7.0%)	6,648.4 S.F.



BUILDING CRITERIA

Function The internal function of the school is very important and careful considerations must be taken with the relationship of spaces. Some spaces such as the classrooms, kindergarten and materials research center may lend themselves to a more flexible area. Other spaces such as the administration and special education should be considered as more fixed in their interior arrangement.

Interior Flexibility Careful considerations should be taken with the classroom areas. The class spaces should be very flexible to accommodate various teaching techniques along with growth and decline of student loads.

Interior Circulation The movement and gathering of students is a major element in the success of the school. Circulation paths must be designed to handle large loads and at the same time be directional and give students accurate orientation.

Economic Efficiency Economic efficiency may be considered in the choice of building materials and furnishings. These elements must be chosen with the thought in mind of heavy and varied uses along with the idea of easy maintenance.

Energy Efficiency Considerations for energy conservation should be evident in orientation, materials, exposures and various other passive energy conservation techniques.

Special Code Requirements Since the facility does include a special education division respect to this fact must be considered. Curb cut ramps must be provided at major access points. Projected drinking fountains must be supplied at drinking fountain locations. At least one enlarged water closet space of 3'-8" minimum must be provided in each public restroom of each sex. In regards to fire exits no point may be farther than 125' from an exit. In class spaces of over 50 students at least 2 exits must be provided. In the gymnasium space one 3' door must be provided for every 150 people.

Acoustics Areas of expected high noise levels, such as the kindergarten and music rooms, should be treated with acoustical considerations in mind. Positioning in relation to other spaces and choice of building materials in these areas must respond to these characteristics.

Scale Scale of furniture and space must be designed to accommodate the average heights and sizes of children from the ages of 5 through 12.

Other Building Criteria This particular building type does not lend itself to a strong central core of circulation and service. Also, no special considerations in regard to high security areas is present.

EXTERIOR CRITERIA

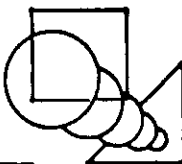
Access/Egress A well defined pattern of access and egress for the daily use by school buses must be provided to the facility. The safety of the students should be well in mind also.

Parking Approximately 55 parking spaces for the administration, teachers, custodians and cooks must be provided. An additional 75 must be provided for P.T.A. and other community functions held at the facility.

Landscaping Landscaping will play a major role in the development of the outdoor playground and the community areas. The landscaping of the surroundings should aid in the circulation patterns about the site. Planting will play a major role in the establishment of exterior nodes and definition of activities.

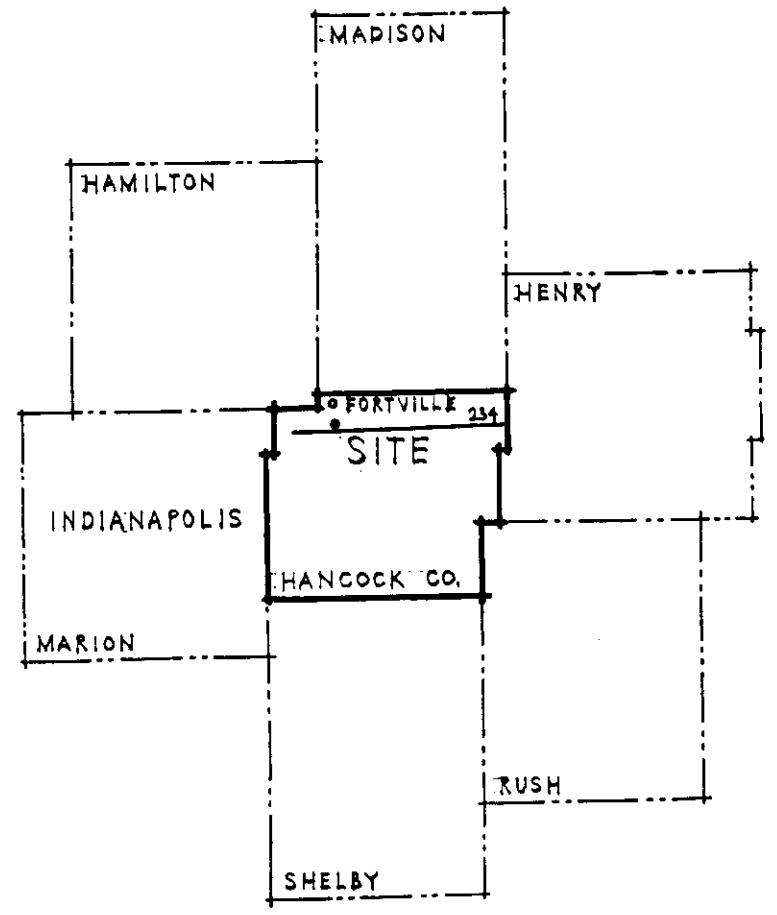
<u>Item</u>	<u>Calculation</u>	<u>Sub-Total</u>	<u>Total</u>
Building Cost	(94,977 GSF @ \$42/SF)	\$3,989,034.0	
Fixed Equipment	(10% of B.C.)	398,903.4	
Site Development	(12% of B.C.)	478,684.1	
Total Construction Cost	Total Of Above		\$4,866,621.5
Moveable Equipment	(10% of B.C.)	398,903.4	
Professional Fees	(8% of C.C.)	389,329.7	
Contingencies	(10% of C.C.)	486,662.2	
Administrative Costs	(2% of C.C.)	97,332.4	
Total Budget	Total Of Above		\$6,238,849.2

MOUNT VERNON ELEMENTARY SCHOOL

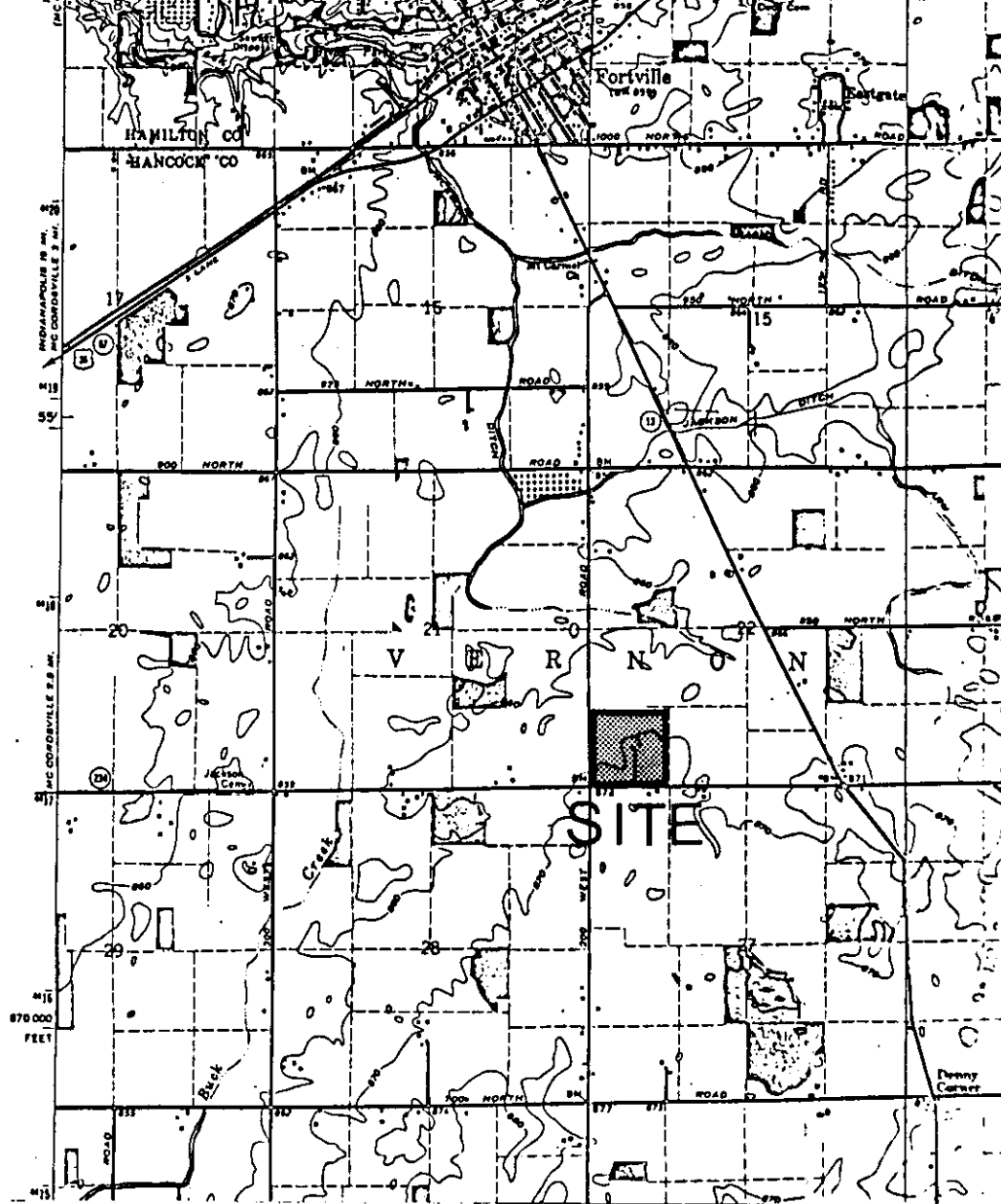




State Map



Regional Map



Location Map

SITE DESCRIPTION

The building site is located on the site of the existing High School, Middle School, Administration Building and Maintenance Bus Garage. The site is 40 acres and is relatively flat with little vegetation. A sink hole exists in the far northeast corner of the site. The surroundings of the site consist of farmlands on the north, east and west, and residences on the south. All major utilities except for sanitation are existing on the site.

COUNTY ROAD 200 WEST

MT VERNON HIGH SCHOOL

6" SANITATION FORCE MAIN

FARMLAND

HEADWALL

PAVED PLAY AREA

PRACTICE FIELD

ELECTRIC TRANSFORMER
GAS METER

1328.2'

LIFT STATION

M.H.

MT. VERNON MIDDLE SCHOOL

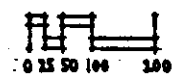
GAS MAIN

BUS GARAGE
ADMINISTRATION BLDG.

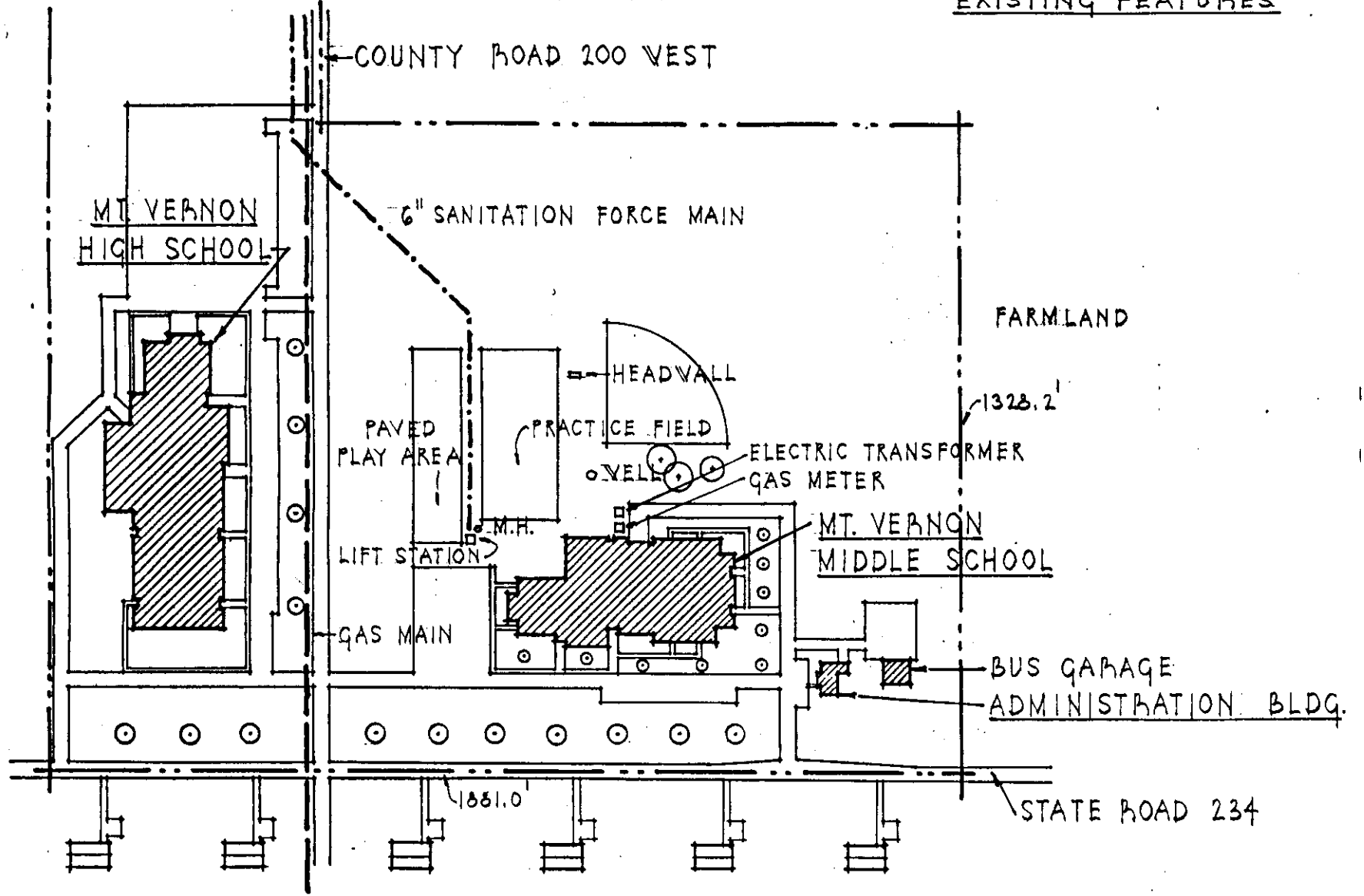
1881.0'

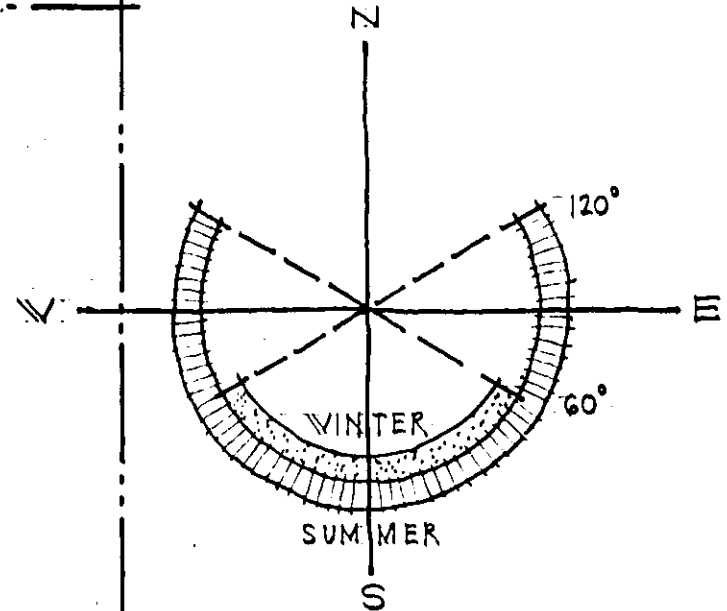
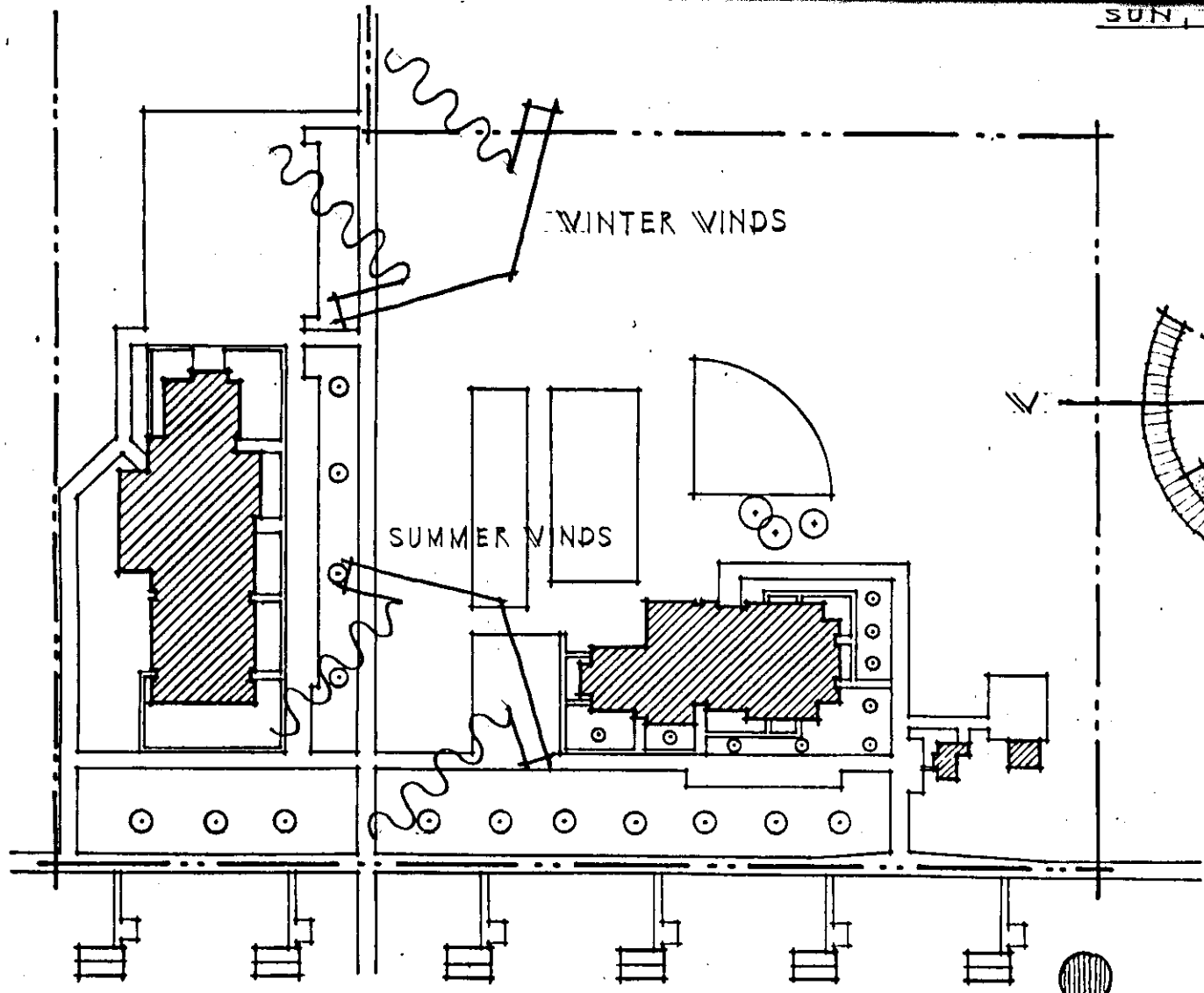
STATE ROAD 234

RESIDENCES

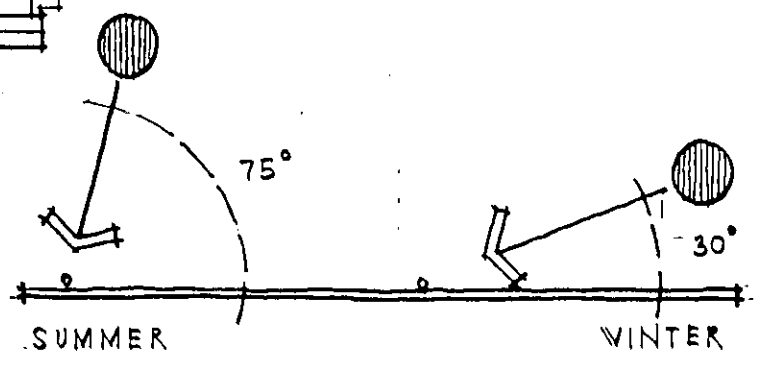


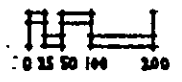
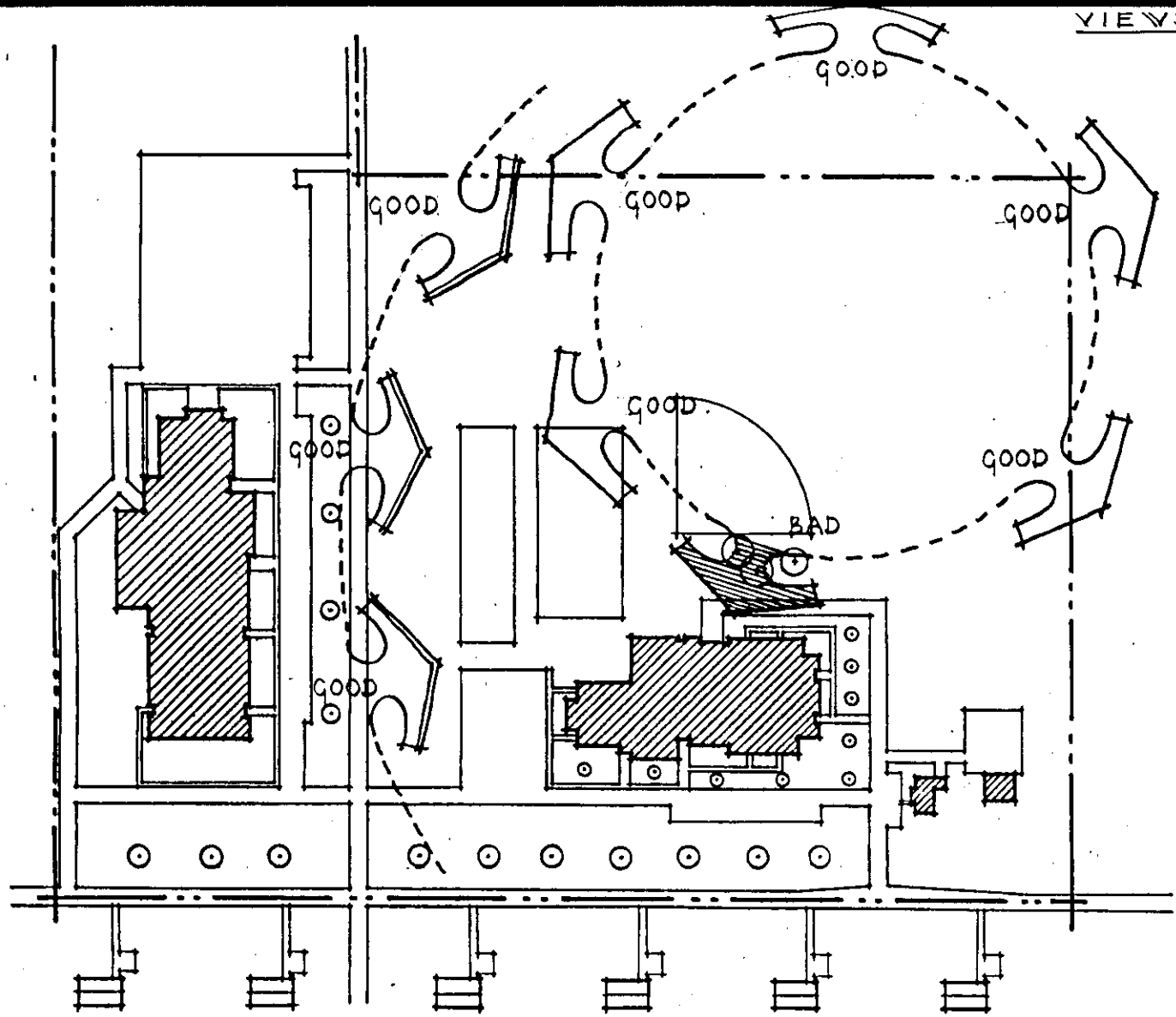
Site Plan



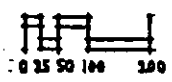
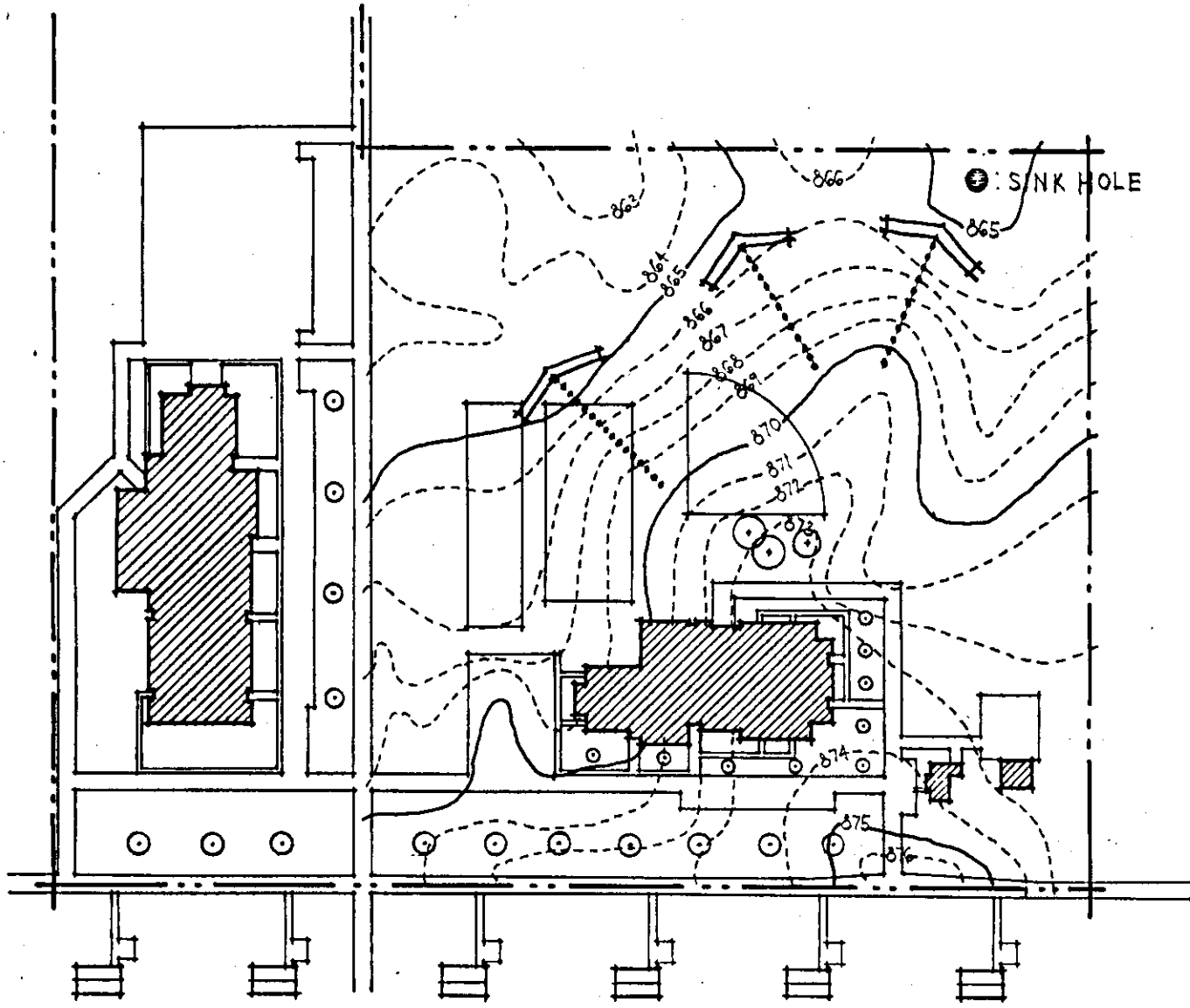


Site Plan

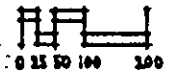
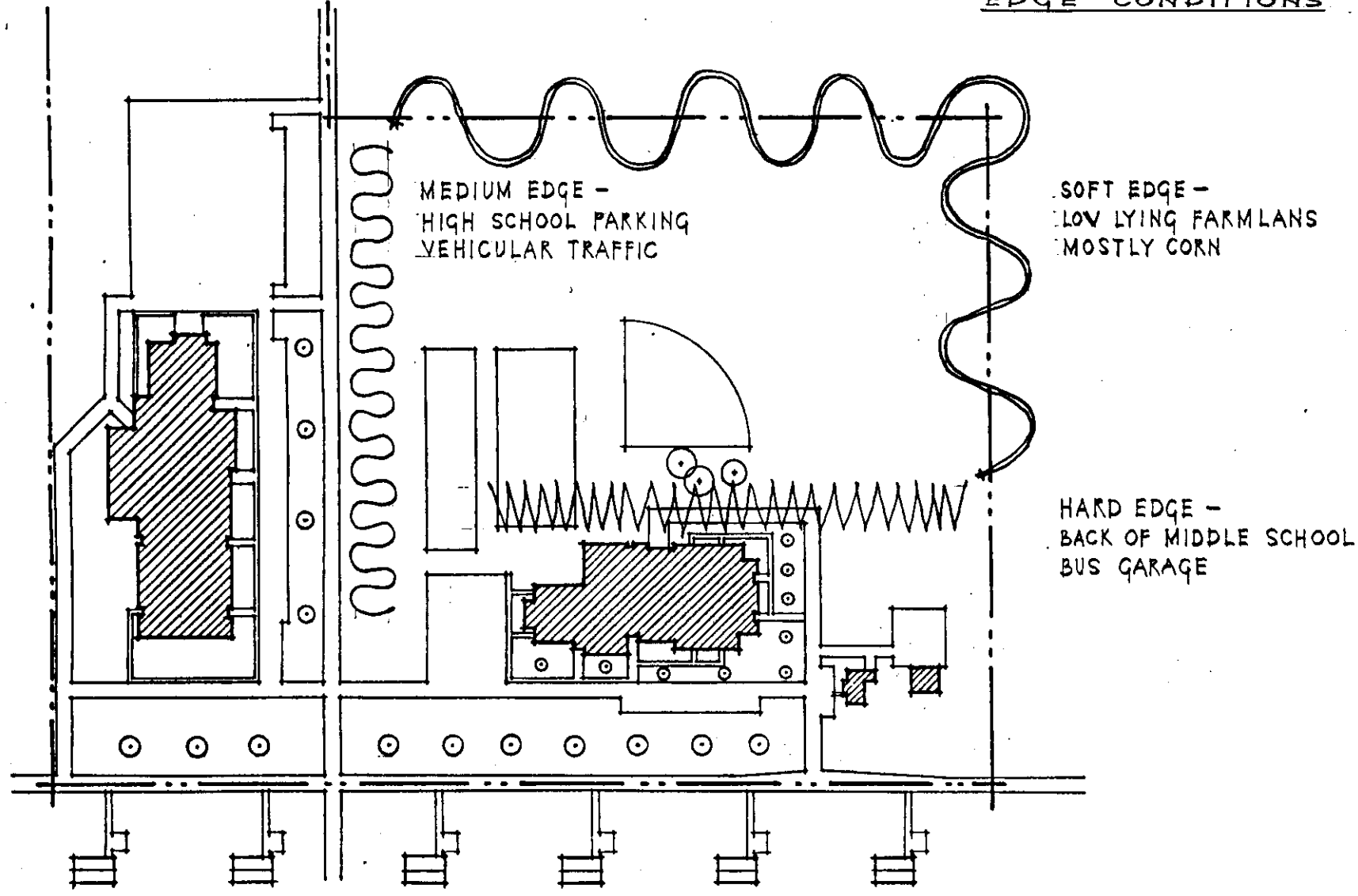




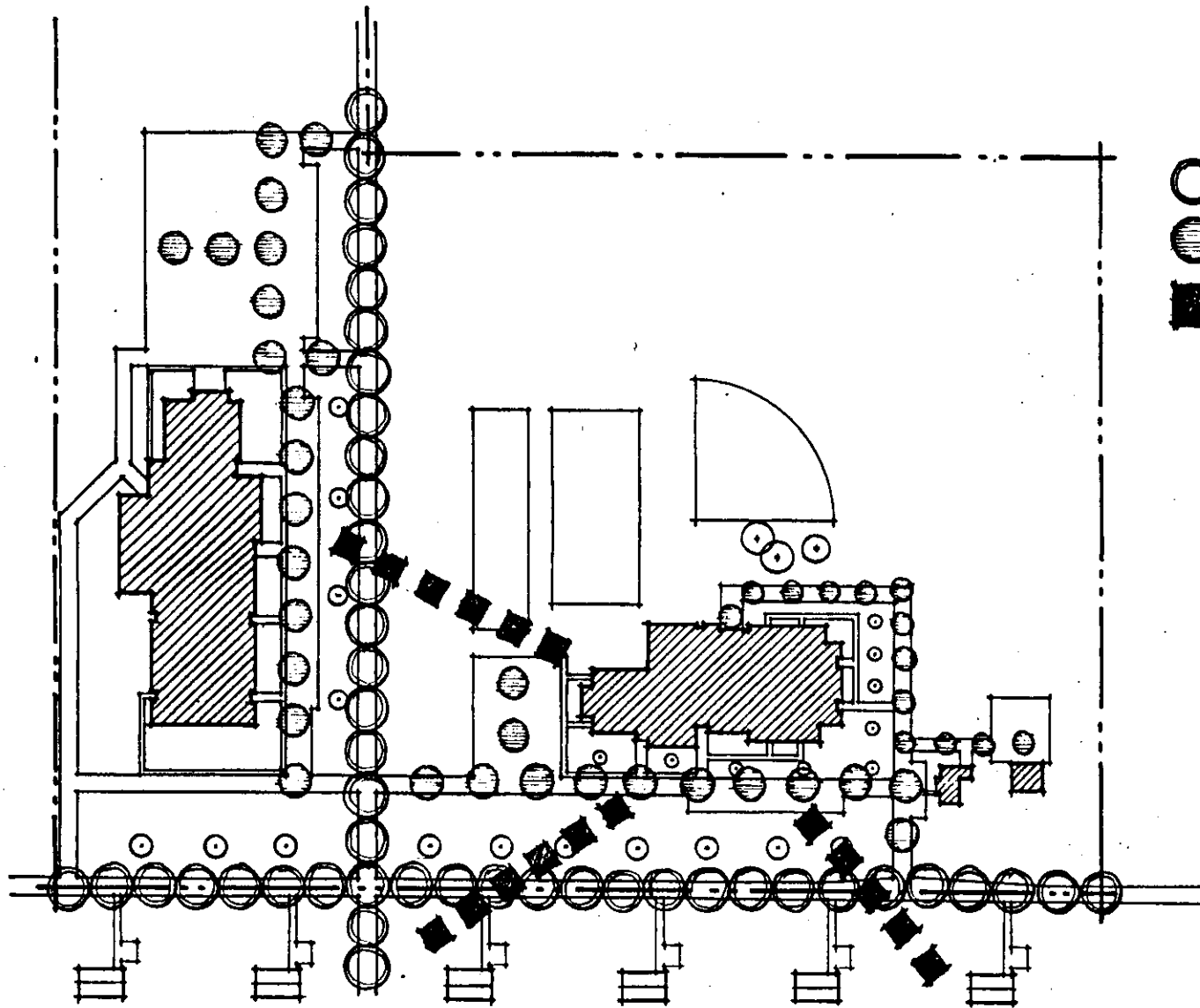
Site Plan



Site Plan



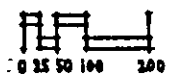
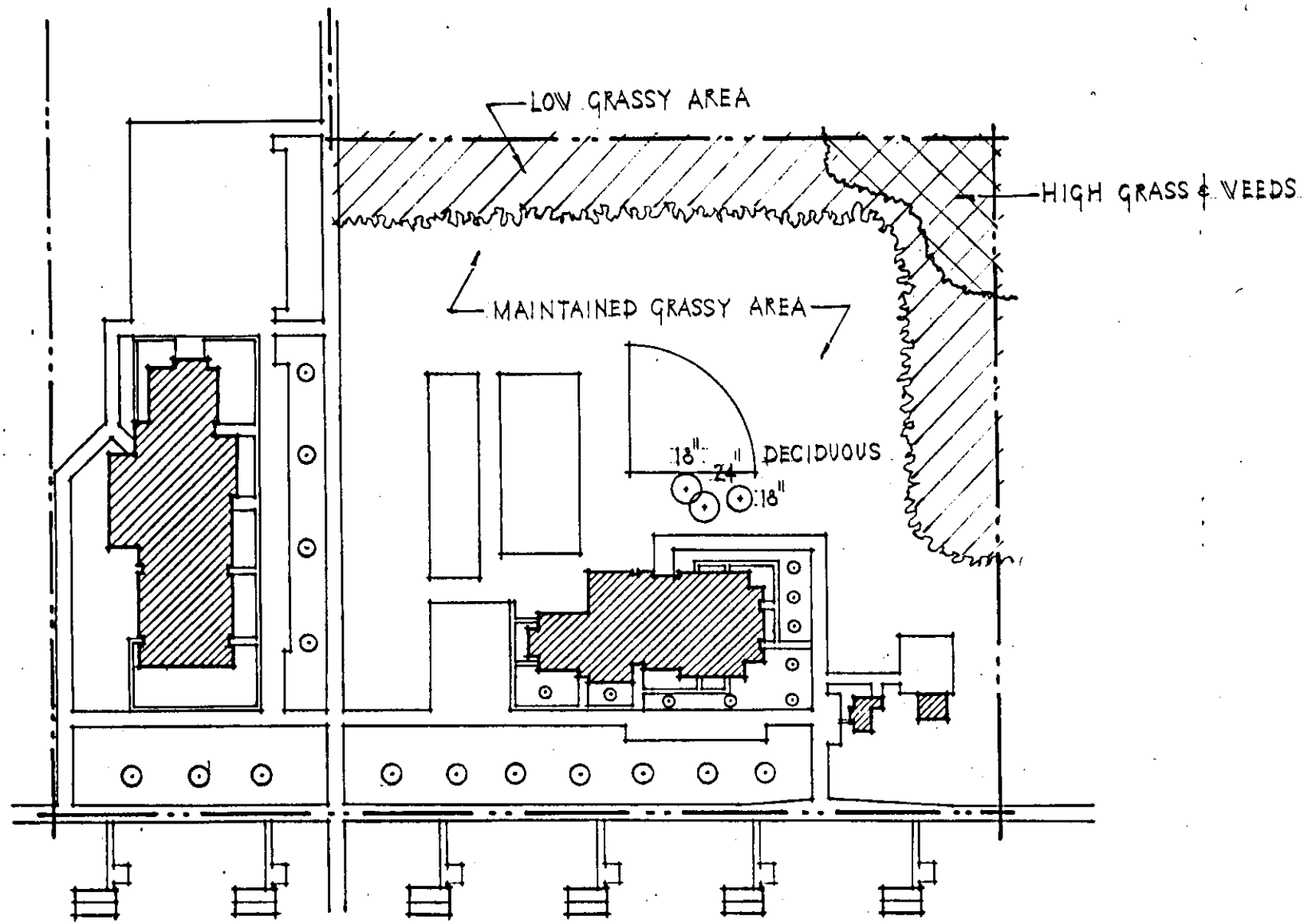
Site Plan



- MAJOR VEHICULAR
- ◐ VEHICULAR - BUS, CAR, TRUCK
- PEDESTRIAN - CHILDREN



Site Plan



Site Plan

CLIMATE:

INDIANAPOLIS

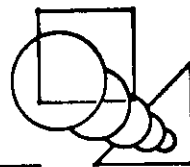
Elevation 792 Ft.

	Temperature					Degree Days		Rel. Hum	Prec. Nor.	Wind Speed	Wind Direction	% Poss. Sunshine	Average Number of Days of									
	Average	Extreme	Monthly	Highest	Lowest	Heating	Cooling						1:00 p.m.	Total	Snow Total	Sunup/Sundown		Rain .01"	Snow 1.0"	Thunder	Fog	Percent IFR
	Maximum	Minimum														P. C.	Clody.					
J	37	21	29	70	-18	1113	0	68	3	5	11	nw	41	6	6	19	11	2	1	4	24	
F	39	23	31	67	-10	949	0	65	2	5	11	wnw	61	6	6	16	10	2	1	2	17	
M	48	30	39	80	-6	809	0	62	3	4	12	wnw	52	6	7	18	12	1	2	2	15	
A	61	40	51	89	20	432	2	55	4	4	11	sw	56	6	8	16	12	0	5	1	6	
M	72	51	61	93	28	177	17	57	4	T	10	sw	62	7	9	15	12	0	7	1	6	
J	82	60	71	96	42	39	324	57	5	0	8	sw	68	7	11	12	10	0	7	1	1	
J	86	64	75	99	48	0	237	60	3	0	7	sw	70	9	12	10	9	0	8	1	2	
A	85	63	74	97	41	0	202	59	3	0	7	sw	72	10	12	9	8	0	6	2	5	
S	78	55	66	96	34	90	189	58	3	0	8	sw	68	11	9	10	8	0	3	1	6	
O	67	44	55	88	20	316	40	56	3	T	9	sw	65	12	8	11	7	0	2	1	10	
N	50	32	41	78	4	723	0	66	3	2	11	sw	43	7	7	16	10	1	1	2	11	
D	39	23	31	70	-14	1051	0	71	3	4	11	sw	40	5	7	19	11	2	0	3	18	
Y	62	42	52	99	-18	5699	1011	61	39	20	10	sw	59	92	102	171	121	7	44	20	10	

SOILS:

THE NEAR SURFACE SOILS CONSIST PREDOMINANTLY OF SILTY CLAYS (CL) AND CLAYEY SILTS (ML) WITH SMALL AMOUNTS OF SAND. THEY ARE GENERALLY MEDIUM STIFF TO VERY STIFF IN CONSISTENCY. THE THICKNESS OF THIS COHESIVE LAYER GENERALLY INCREASES FROM SOUTH TO NORTH. UNDERLYING THE COHESIVE MATERIALS ARE GRANULAR SOILS INCLUDING SANDY SILT (ML), SILTY SAND (SM) AND SAND (SP). THESE SOILS ARE GENERALLY MEDIUM DENSE.

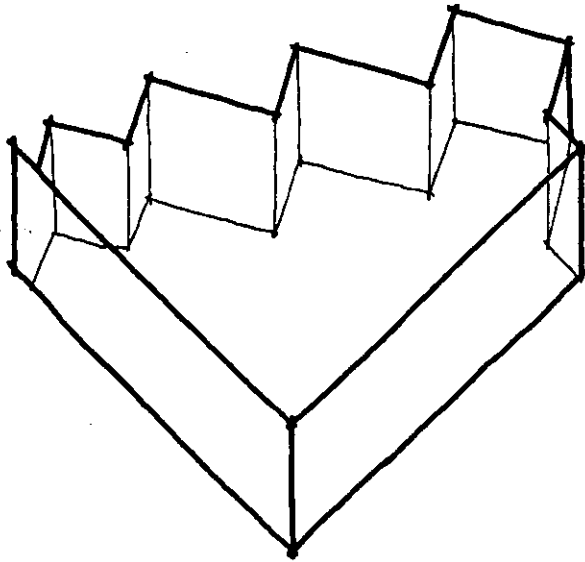
MOUNT VERNON ELEMENTARY SCHOOL



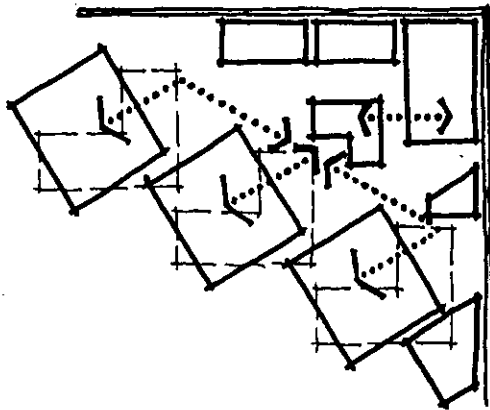
MT. HEALTHY ELEMENTARY SCHOOL

Hardy, Holzman, Pfeiffer

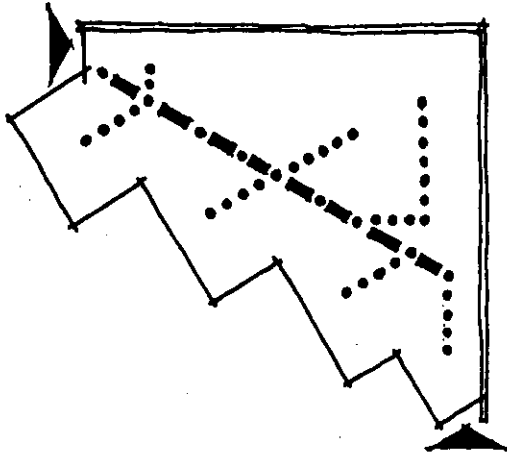
Columbus, Indiana



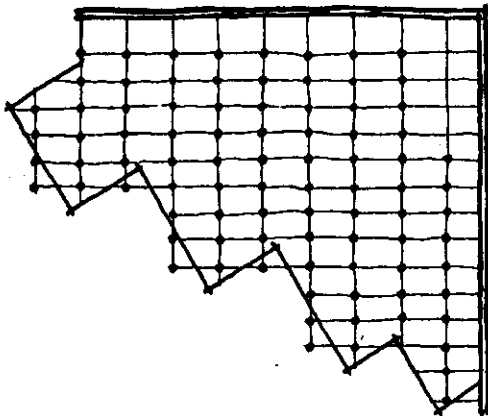
Concept/Parti The building parti is a combination plane and fragmented with two long masonry walls that meet at right angles and a series of multi-level clusters that correspond to standard academic subdivisions.



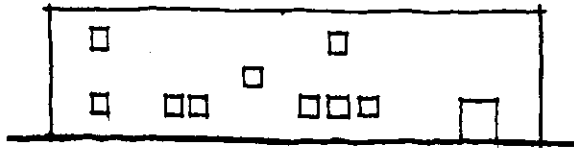
Correlation Three multi-level clusters, each functioning as a building within itself, are divided by the spine from service and general spaces. Each cluster, upper and lower, contain three class areas. In the center of each cluster is a teacher's preparation area also.



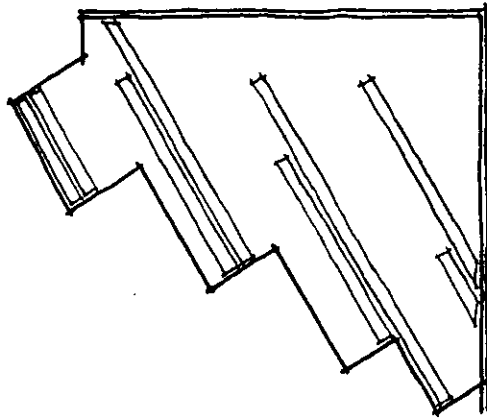
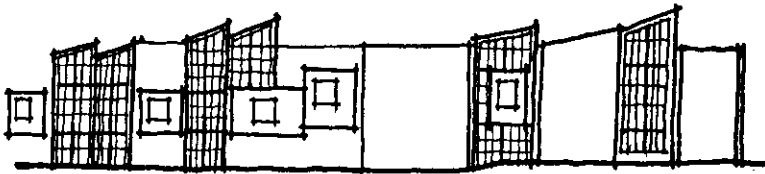
Circulation All circulation stems from a central spine into the clusters and general spaces.



Structure The structural system is steel column and open-web steel trusses.



Facade The facade of the two red brick masonry walls creates the feeling of the old one room brick schoolhouse.



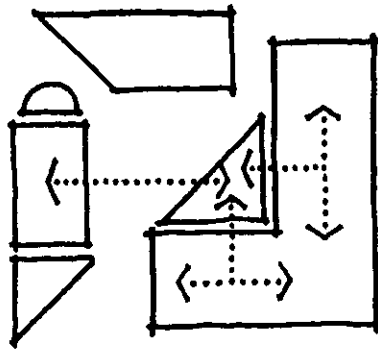
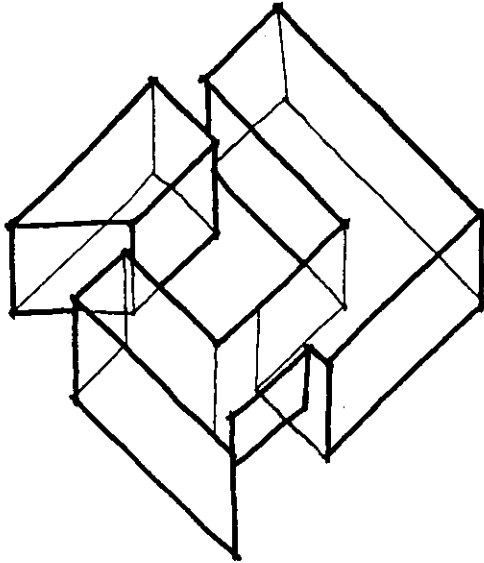
Unique Features Skylights along with brightly colored mechanical systems add to the visual excitement of the interior spaces.

FODREA ELEMENTARY SCHOOL

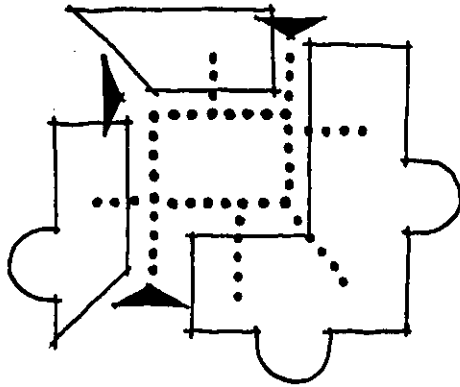
Caudill, Rowlett, Scott

Columbus, Indiana

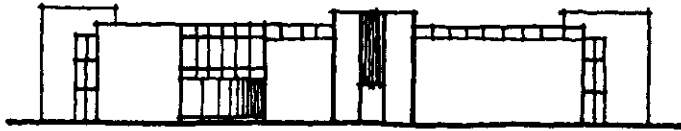
Concept/Parti The building parti is that of a court.



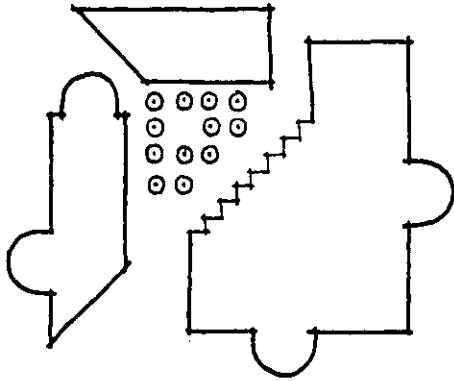
Correlation The materials resource center functions as the center with a multi-level L-shaped space containing the class spaces. A multi-purpose activities room has been pulled away and separated by the interior court.



Circulation The major circulation happens on the interior edges of the spaces surrounding the interior court.



Facade The facade material is white metal panels which are emphasized vertically.



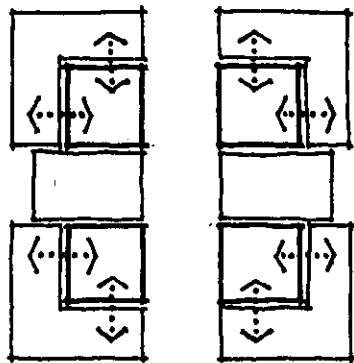
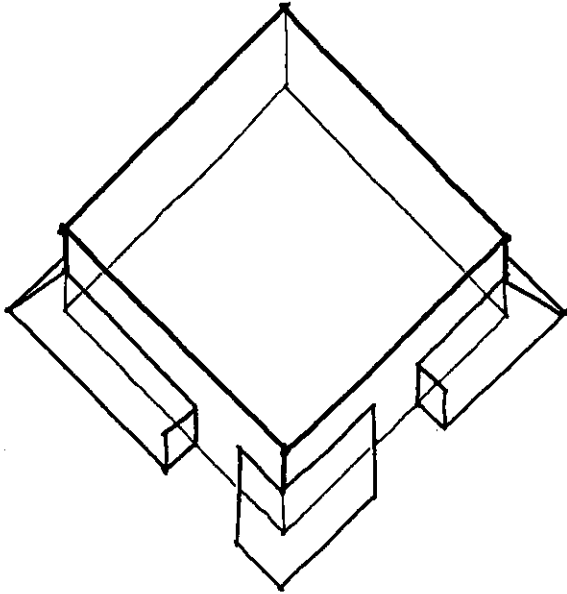
Unique Features The center of the school is an open court seen as a community concourse, from which people are never excluded.

BELLFLOWER ELEMENTARY SCHOOL

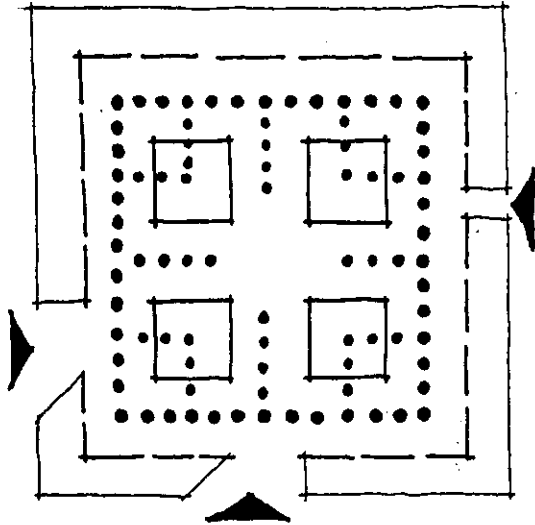
Richard Fleischman Architects

Mentor, Ohio

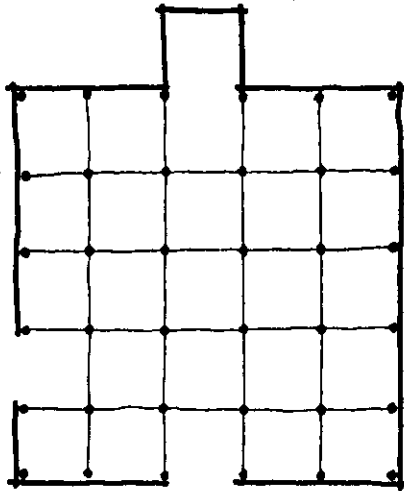
Concept/Parti The building parti is a simple geometric form with earth berming.



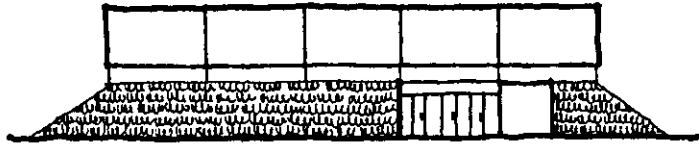
Correlation Four quadrants at each corner of the building are the major learning centers. An open concourse and the gym are major activity centers which divide the quadrants.



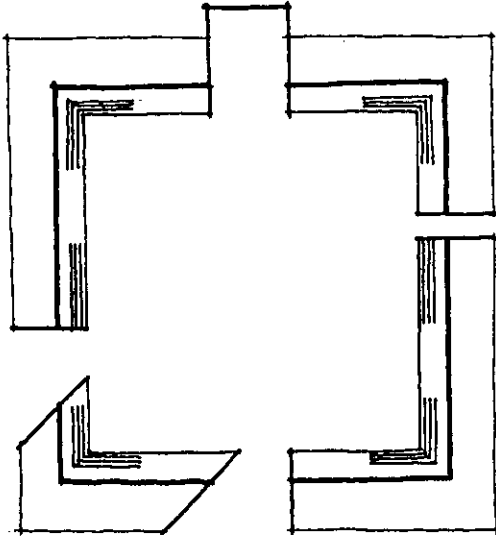
Circulation The major circulation happens through the exterior spaces of the quadrants.



Structure The structural system is steel column and open-web steel trusses.



Facade Earth berming slopes up to clerestory bands of glass with metal panels above that.



Unique Features The exterior earth berm is reiterated as a sloping wall of concrete on the interior. Bleachers are mounted on the sloping walls and small theaters are created at each corner.